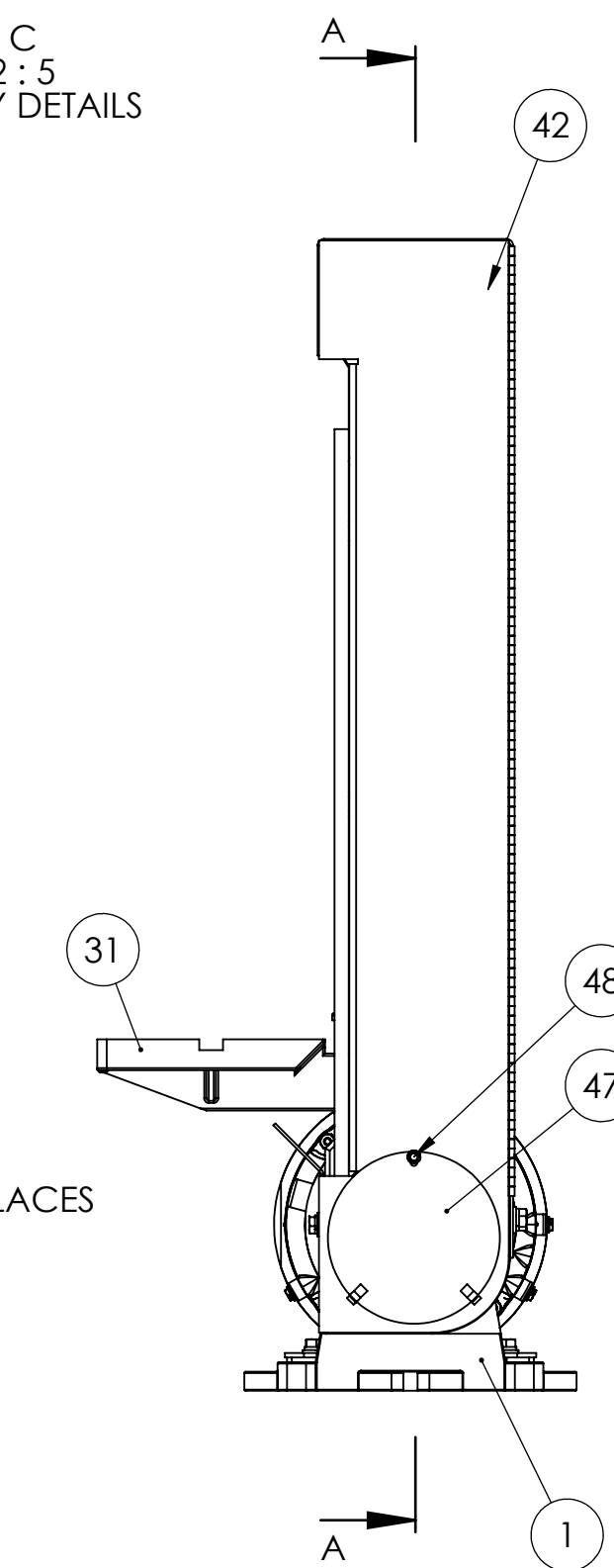
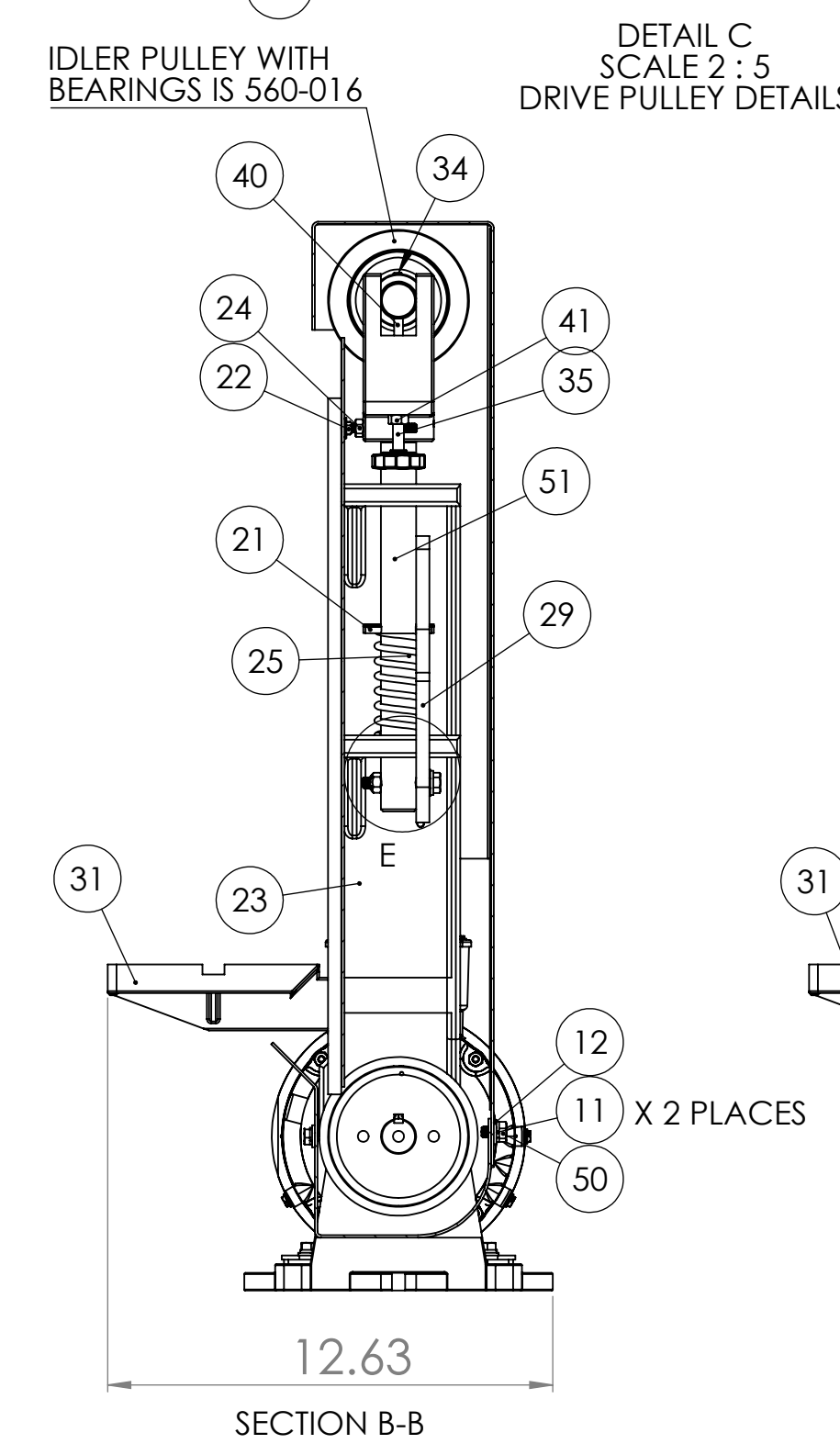
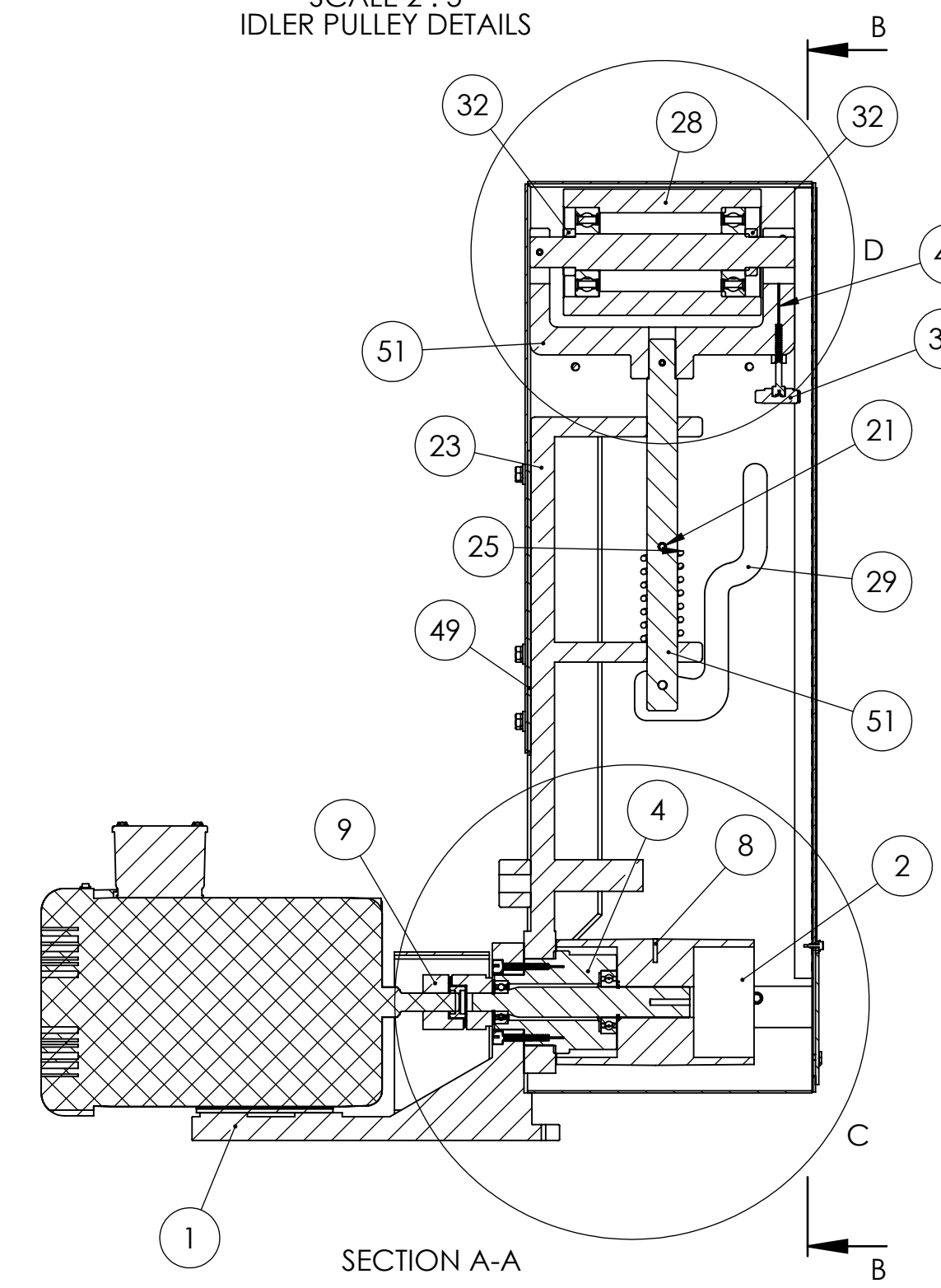
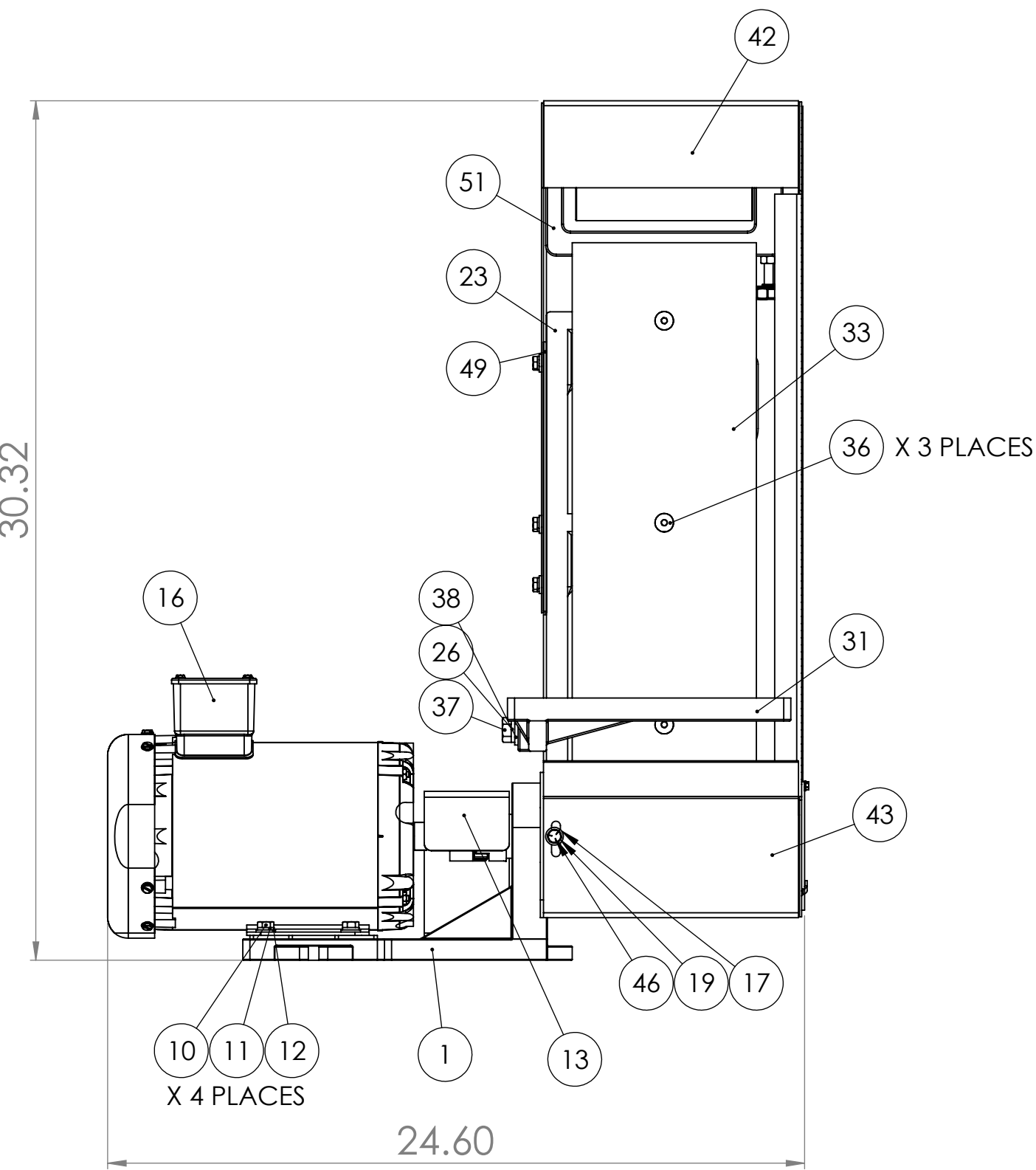
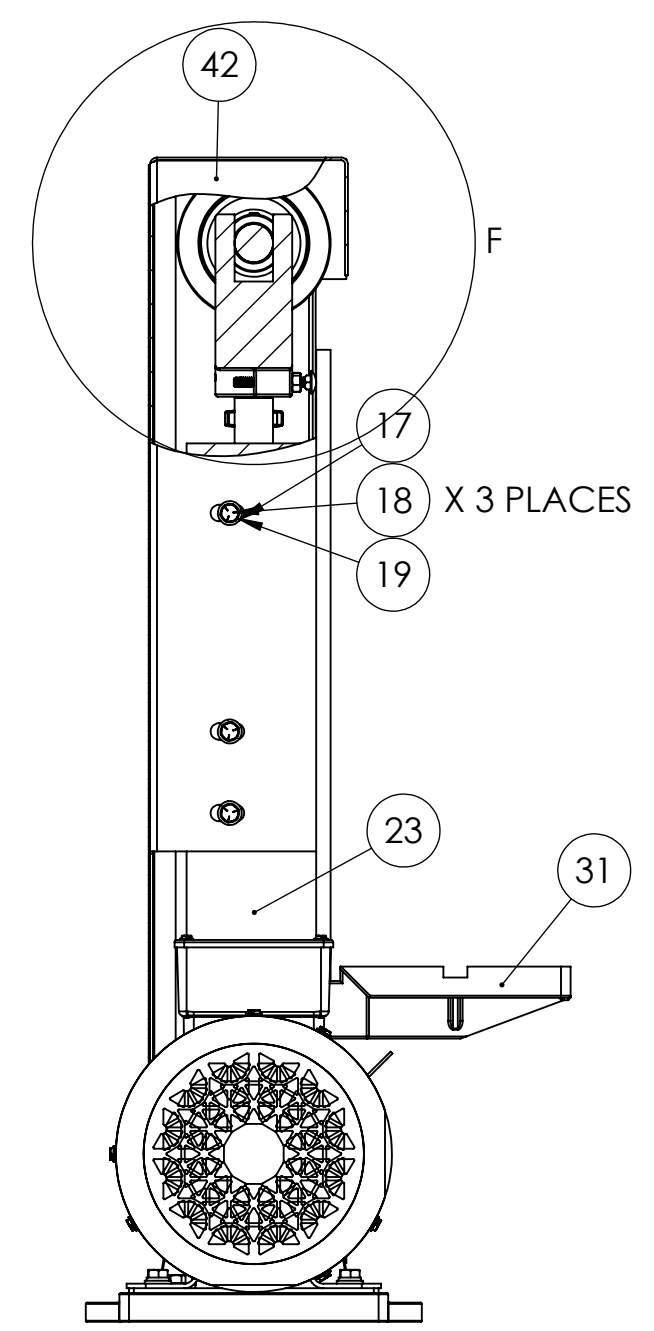
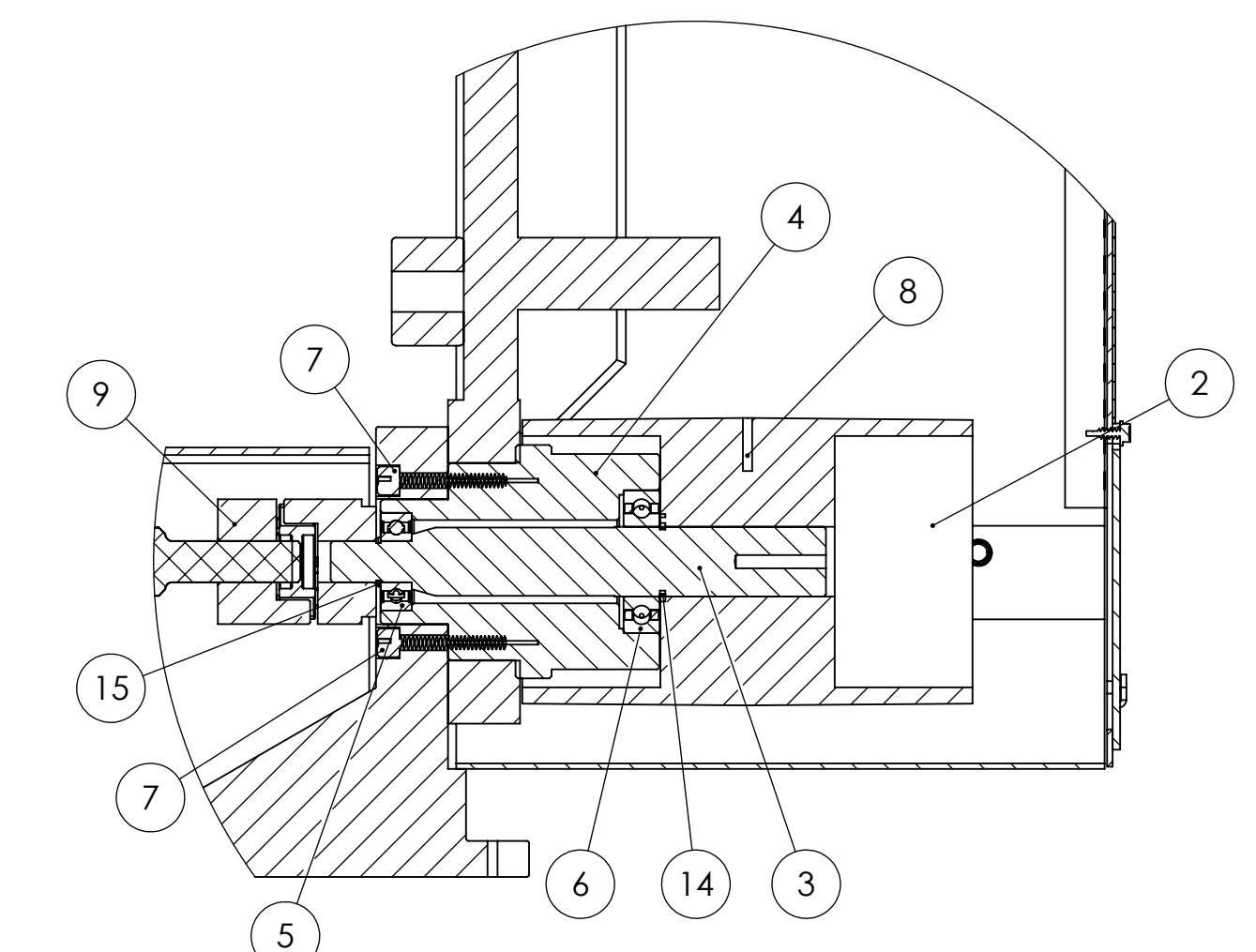
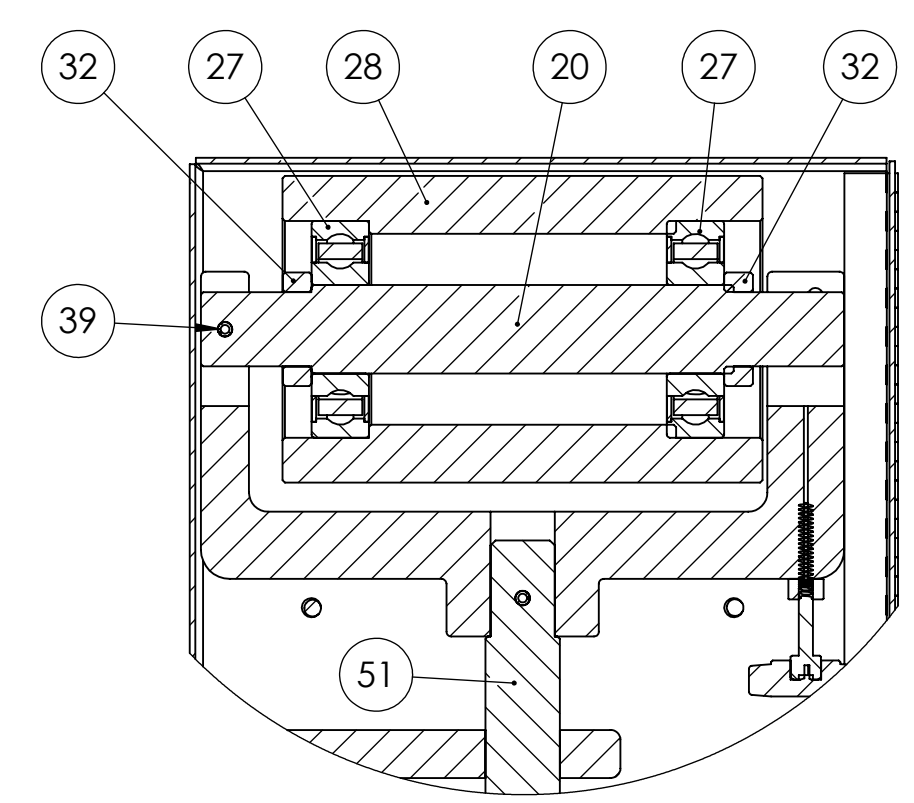
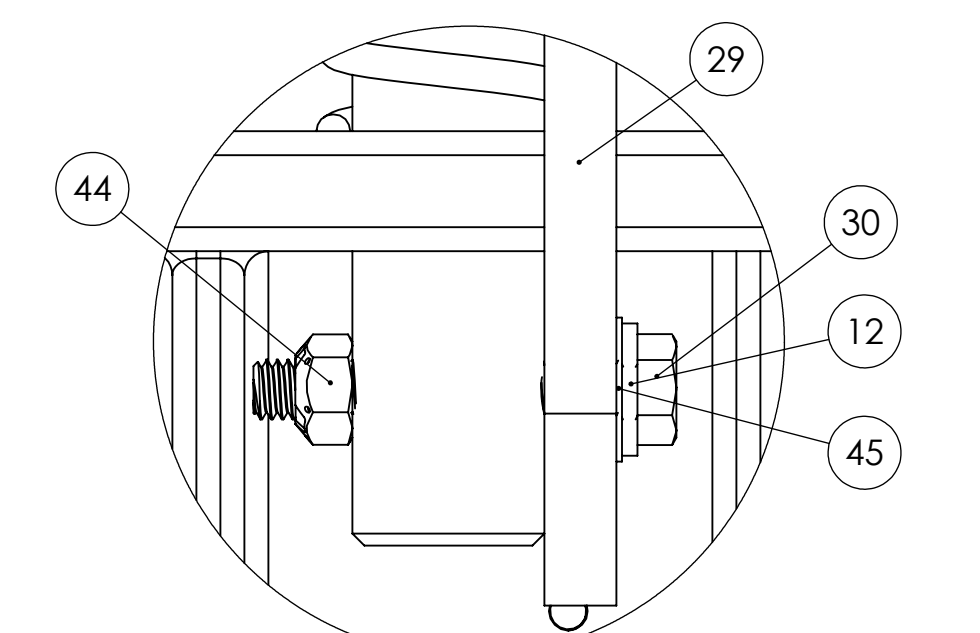
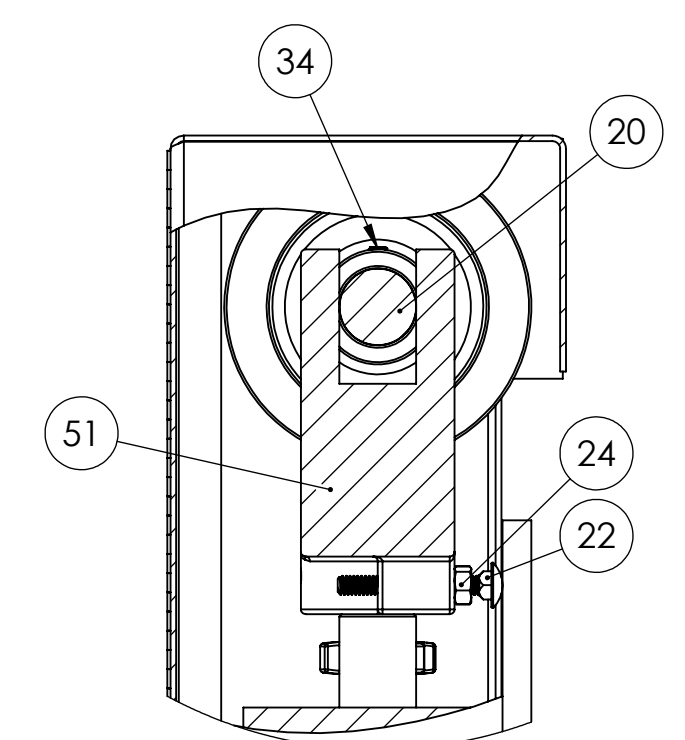
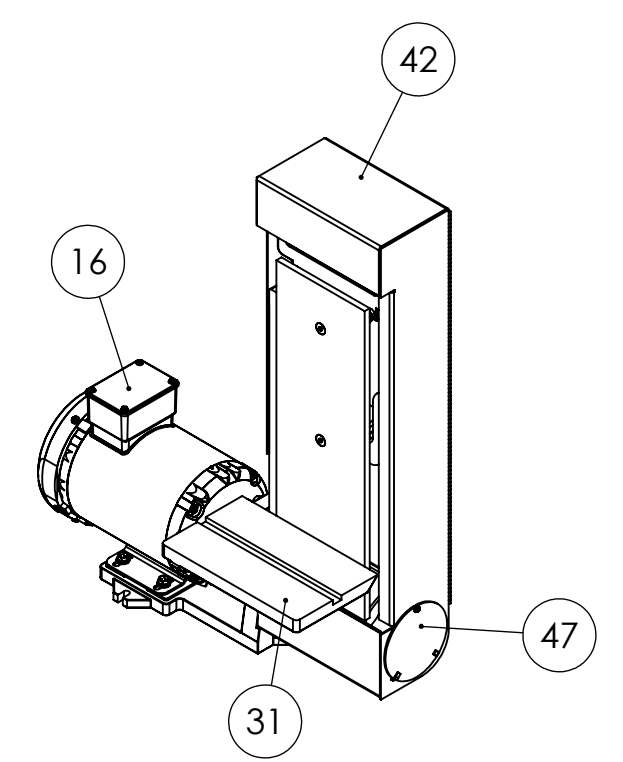
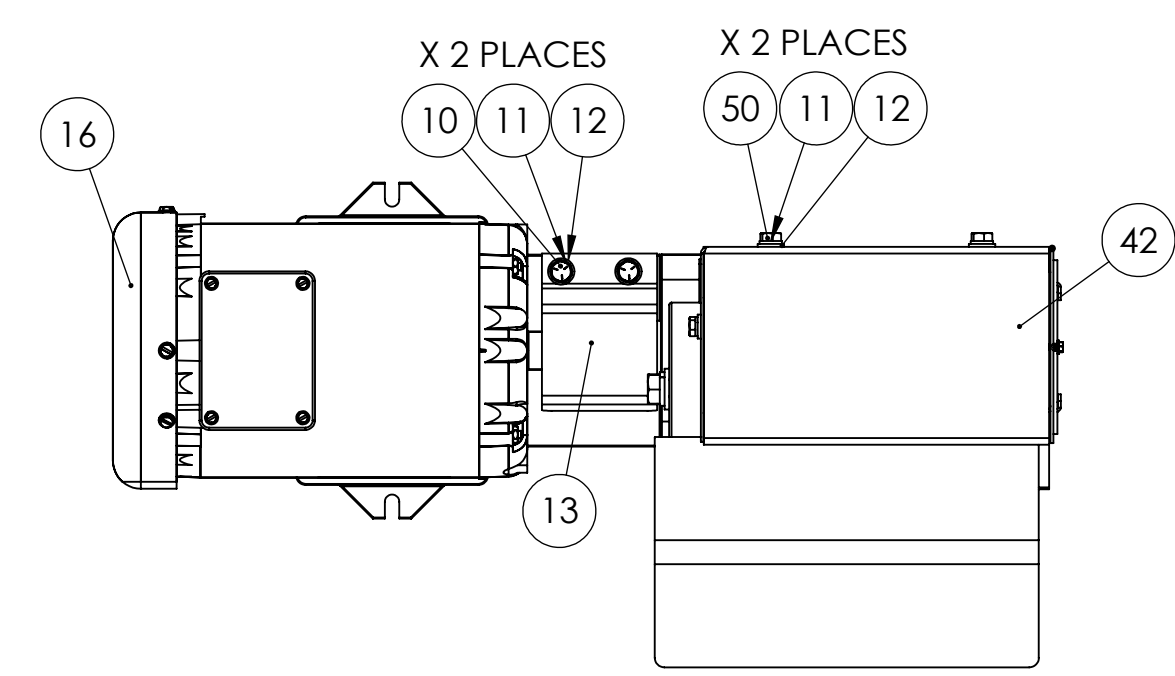


ITEM NO.	PART NUMBER	DESCRIPTION	QTY.
1	050-020	S6 BASE	1
2	560-015	S6 DRIVE PULLEY	1
3	701-018	S6 DRIVE SPINDLE	1
4	386-013	S6 BEARING HOUSING	1
5	044-007	K10 BEARING	1
6	044-001	K12 BEARING	1
7	SHCA031024	5/16-18 X 1-1/2 SHCS	2
8	SSHA025006	1/4-20 X 3/8 SOC SET 1/2 DOG	1
9	148-001	S6 COUPLING ASSEMBLY	1
10	HHC5031012	5/16-18 X 3/4 HCS GR5 Z	6
11	SLWZ031	5/16 SPLIT L/W Z	8
12	UFWZ031	5/16 USS F/W Z	9
13	342-023	S6 COUPLING GUARD	1
14	641-007	RETAINING RING 1" FOR S6, S460W, S612 DRIVE SPINDLE	1
15	641-016	RETAINING RING SHR-62 ST PA 5/8	1
16	486-007	3HP FOR K8B, K10B, KM10, BG260H, S460W, S6M AND S6T2	1
17	UFWZ025	1/4 USS F/W Z	4
18	HHC5025016	1/4-20 X 1 HHCS GR5 Z	3
19	SLWZ025	1/4 SPLIT L/W Z	4
20	701-019N	S6 IDLER SPINDLE- NEW STYLE	1
21	ROLA025024	1/4 X 1-1/2 ROLL PIN	1
22	CRBZ025032	1/4-20 X 2 CARRIAGE BOLT ZINC PLATED	2
23	291-030	CAST IRON FRAME FOR S660 DRY SANDERS	1
24	FHN5025	1/4-20 FHN GR5 Z	2
25	697-024	S6 BELT TENSION SPRING	1
26	SLWZ050	1/2 SPLIT L/W Z	1
27	044-004	K20 SPINDLE BEARING	2
28	560-016-2	S6 IDLER PULLEY- NEW STYLE	1
29	455-003A	TENSION RELEASE LEVER FOR S660 SANDER HEADS	1
30	HHT5031032	5/16-18X2 HEX HEAD TAP BOLT GR5 ZINC	1
31	829-012	S6 WORK TABLE	1
32	123-016	S6 IDLER PULLEY LOCK COLLAR	2
33	563-023	PLATEN FOR S660 SERIES SANDERS	1
34	SSKA025004	1/4-20 X 1/4 SOC SET KNURL PT.	2
35	441-014	TRACKING KNOB ASSEMBLY	1
36	FSCA031012	5/16-18 X 3/4 FSHCS	3
37	HHC5050032	1/2-13 X 2 HHCS GR5 Z	1
38	SFWZ050	1/2 SAE F/W Z	1
39	ROLA018032	3/16 X 2 ROLL PIN	1
40	DOWA025032	1/4 X 2 DOWEL PIN	1
41	FHN5031	5/16-18 FHN GR5 ZINC	1
42	342-085	S660 GUARD, FULL BOXED OSHA, FOR S660M, S660MW SANDERS	1
43	342-069-E	S6 BELT GUARD BOTTOM PLATE	1
44	STNZ031	5/16-18 STOVER LOCK NUT ZINC-WAX	1
45	BWWA031	5/16 BOWED SPRING WASHER 21/64	1
46	HHC5025012	1/4-20 X 3/4 HCS GR5 Z	1
47	342-069C	BLANK COVER FOR S6M SANDER OSHA GUARD	1
48	HWTZ008008	#8 X 1/2 HWH TEKS Z	1
49	699-050	S660 SERIES OSHA GUARD TO FRAME SPACER	1
50	HHC5031008	5/16-18 X 1/2 HCS GR5 Z	2
51	960-006YA	YOKE WITH TENSION SHAFT FOR S6 SANDERS	1

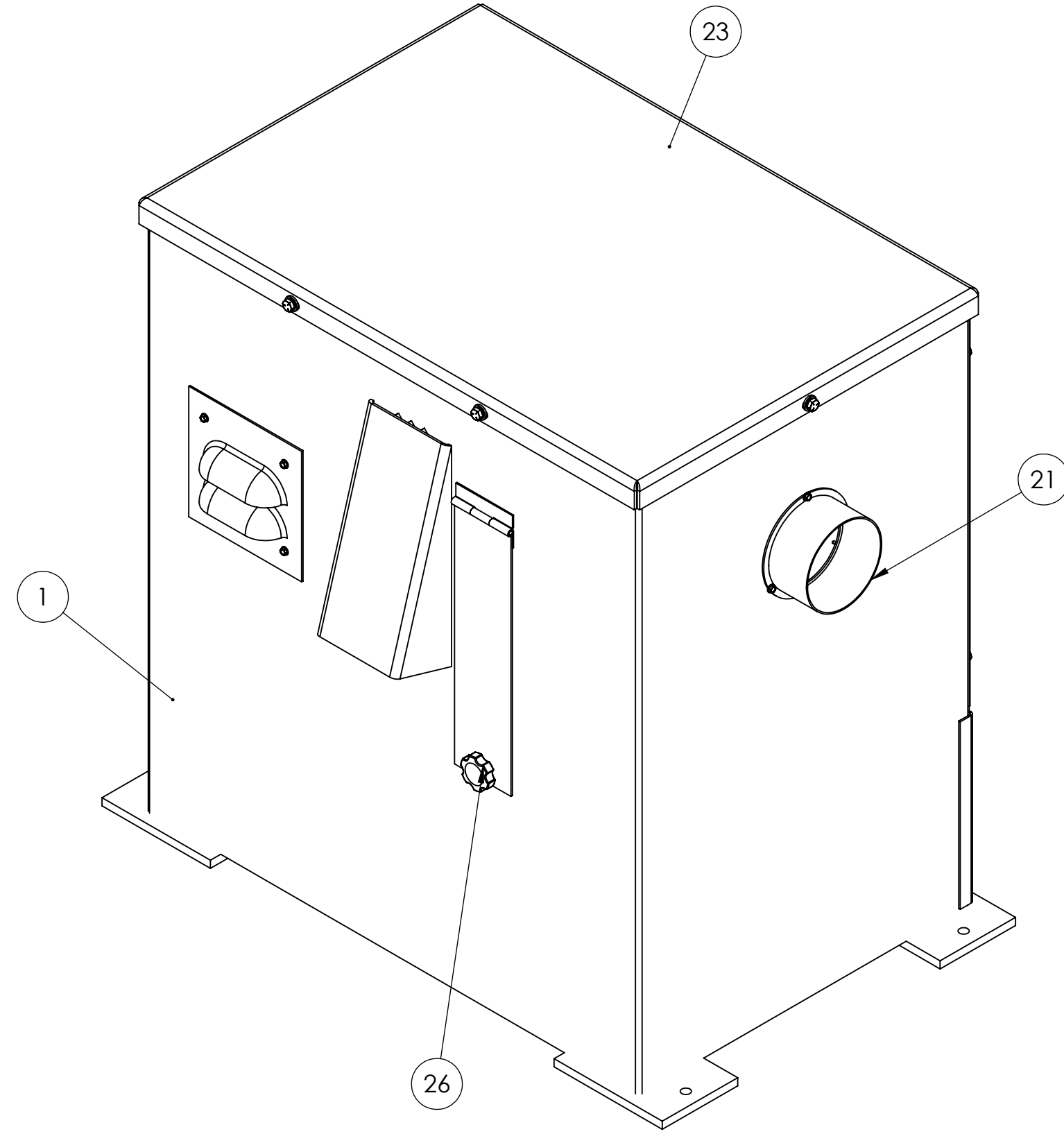
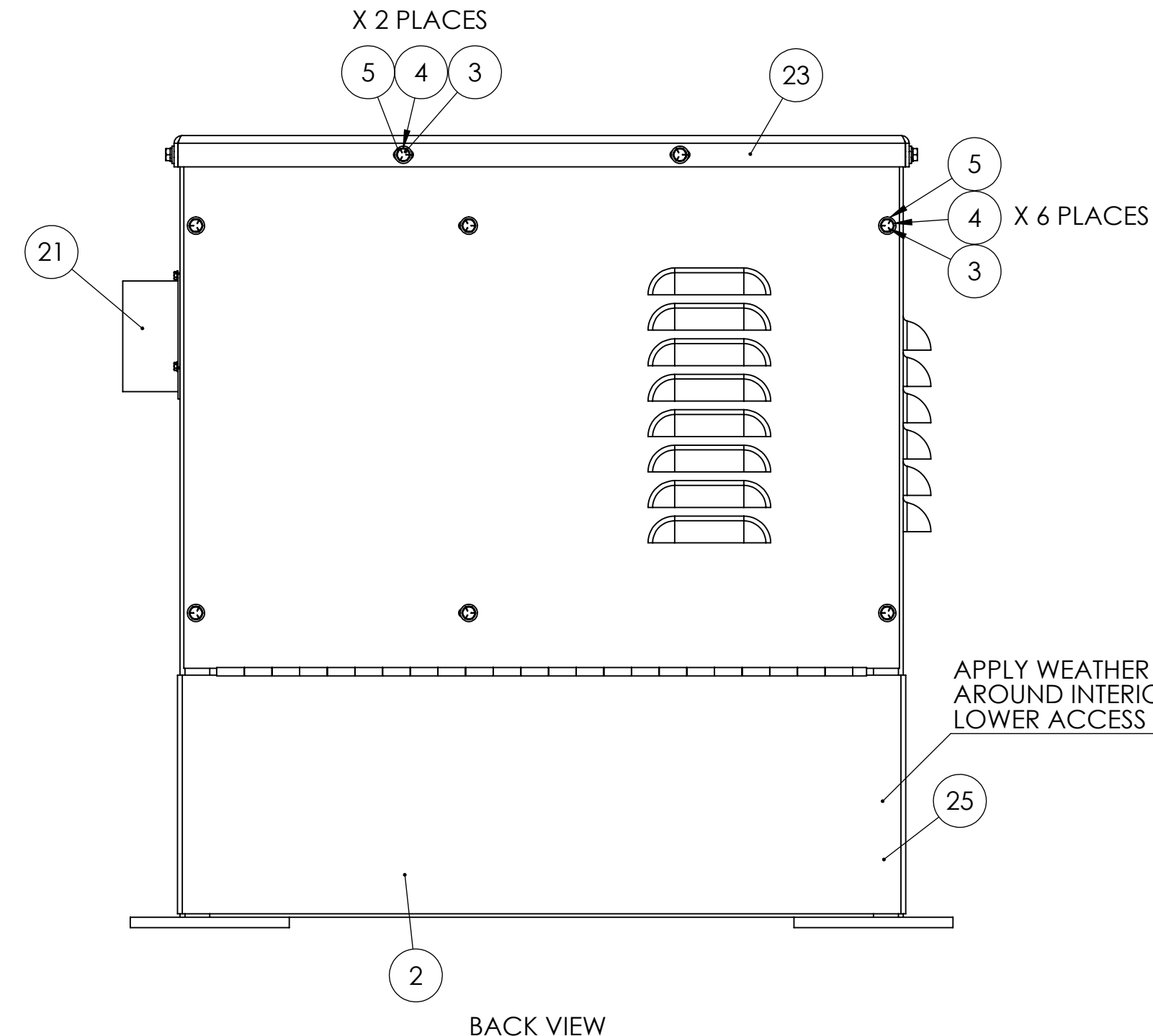


PROPRIETARY AND CONFIDENTIAL
 THE INFORMATION CONTAINED IN THIS DRAWING IS THE SOLE PROPERTY OF KALAMAZOO INDUSTRIES, INC. ANY REPRODUCTION IN PART OR AS A WHOLE WITHOUT THE WRITTEN PERMISSION OF KALAMAZOO INDUSTRIES, INC. IS PROHIBITED.

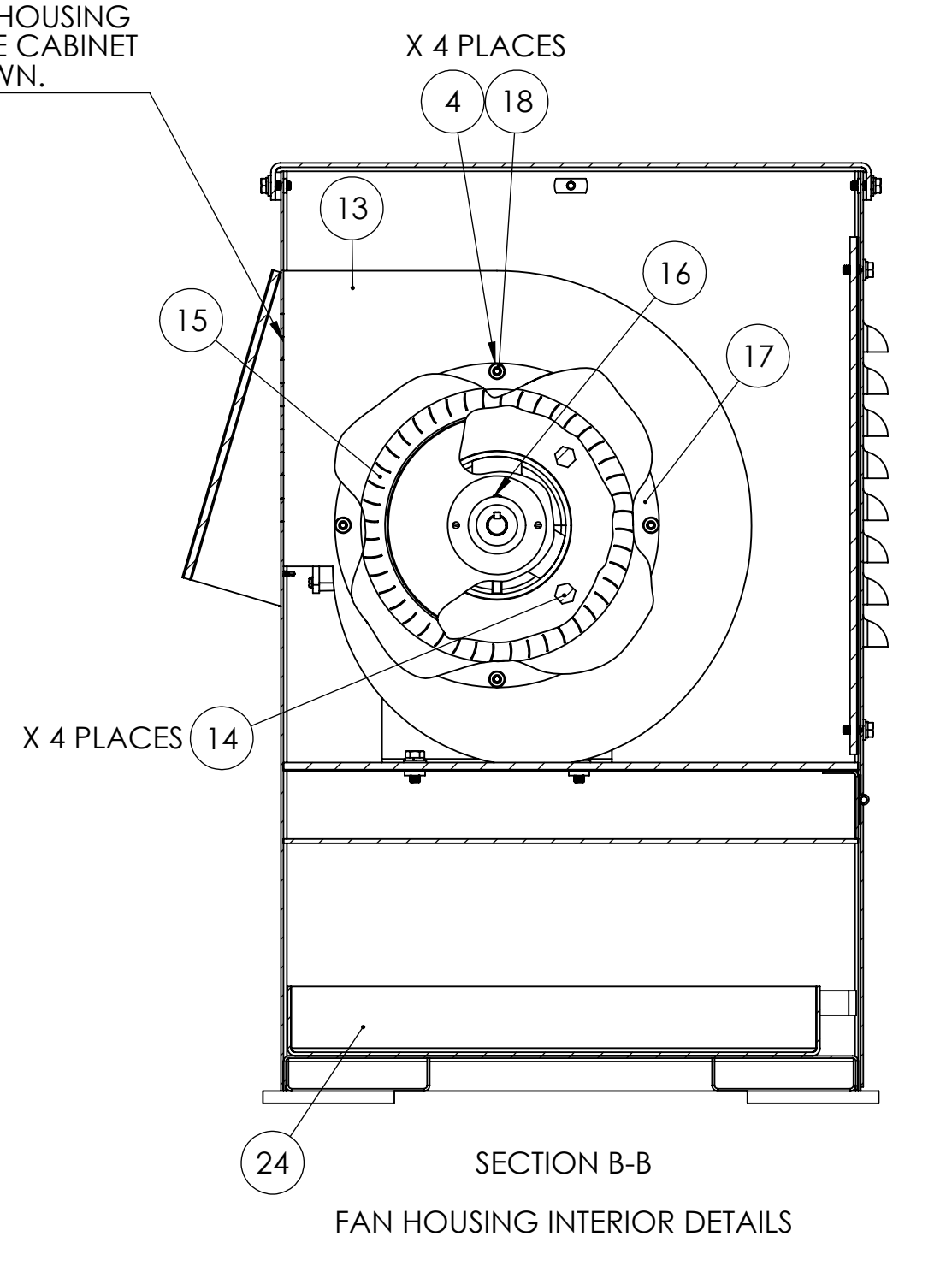
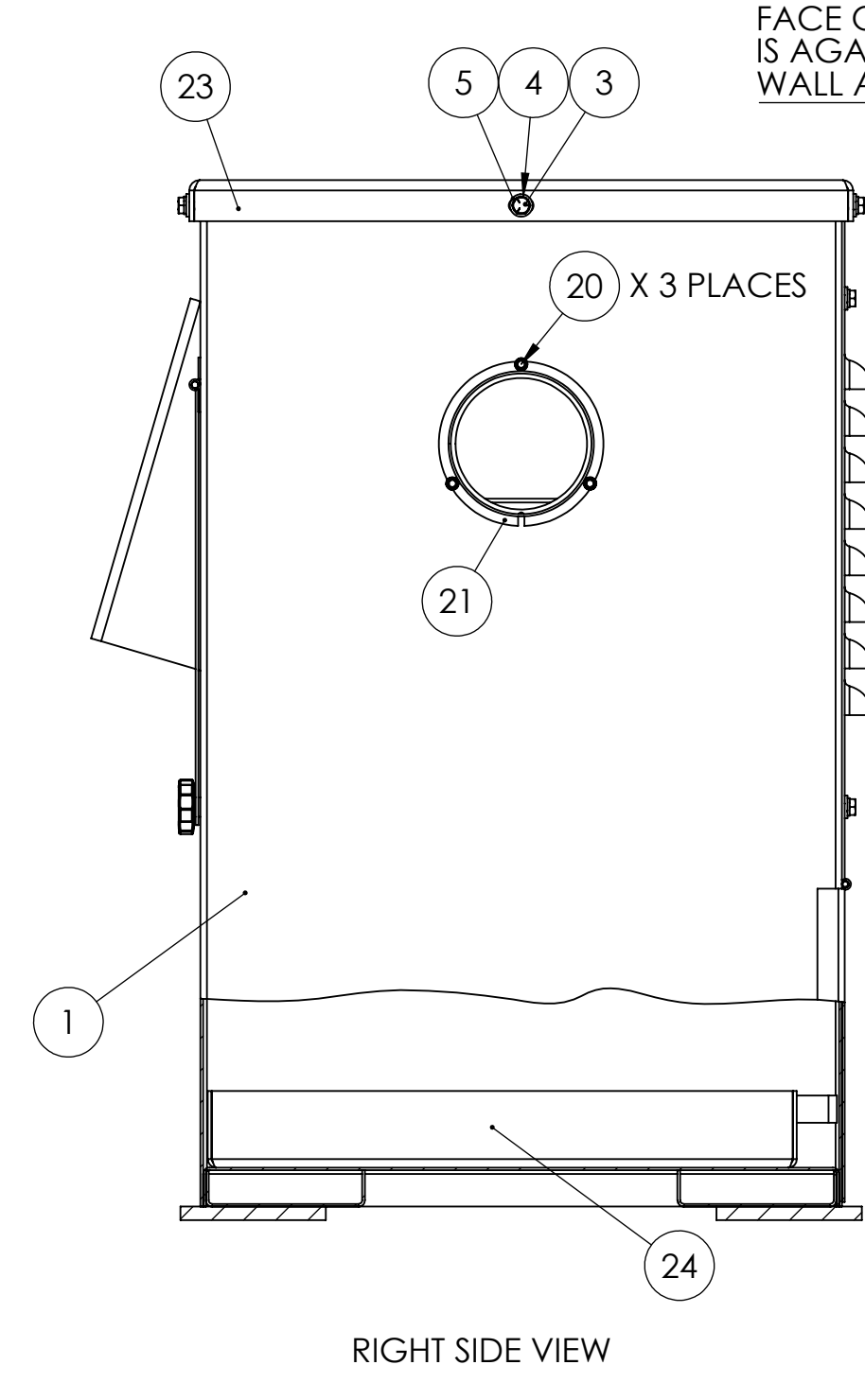
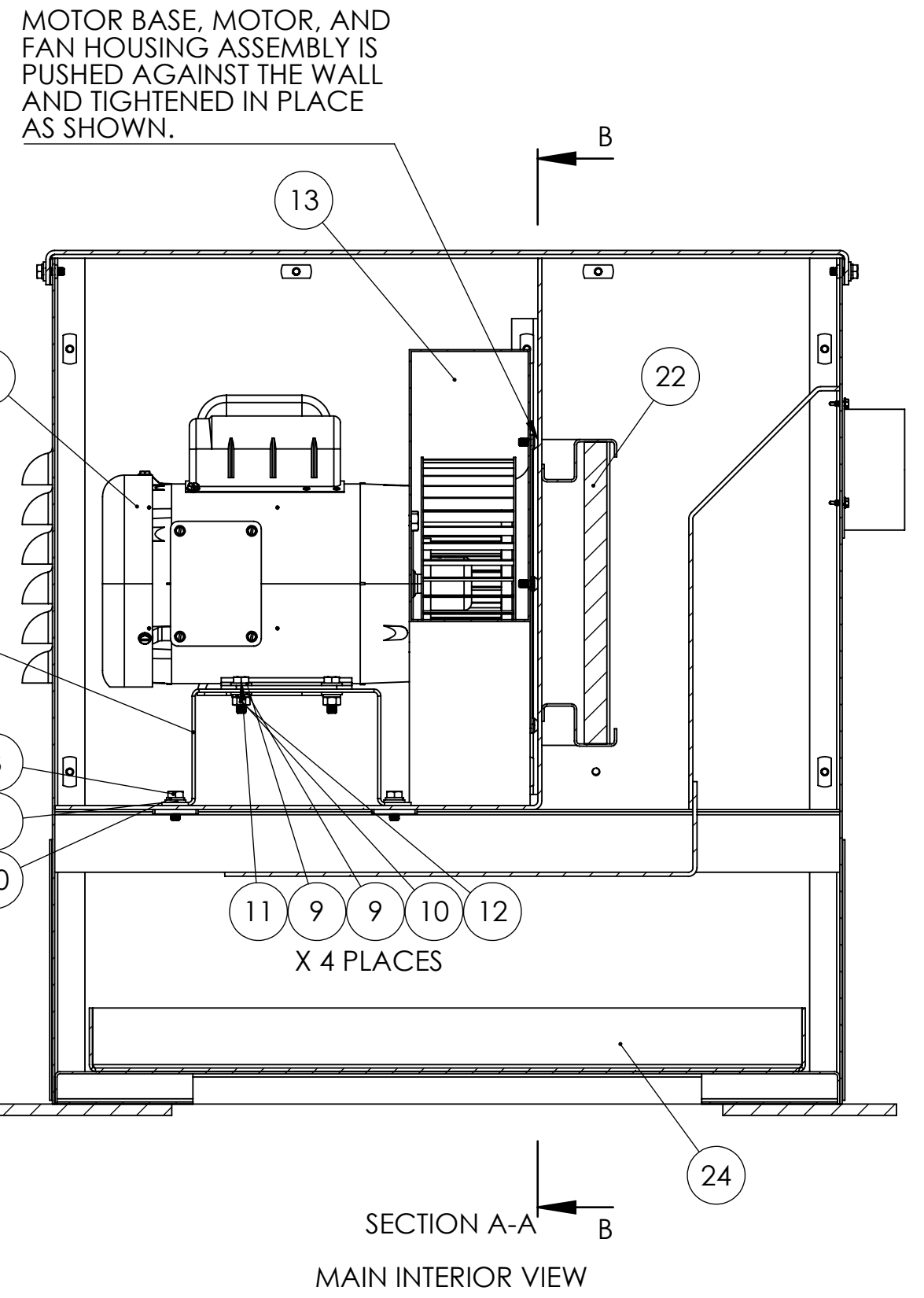
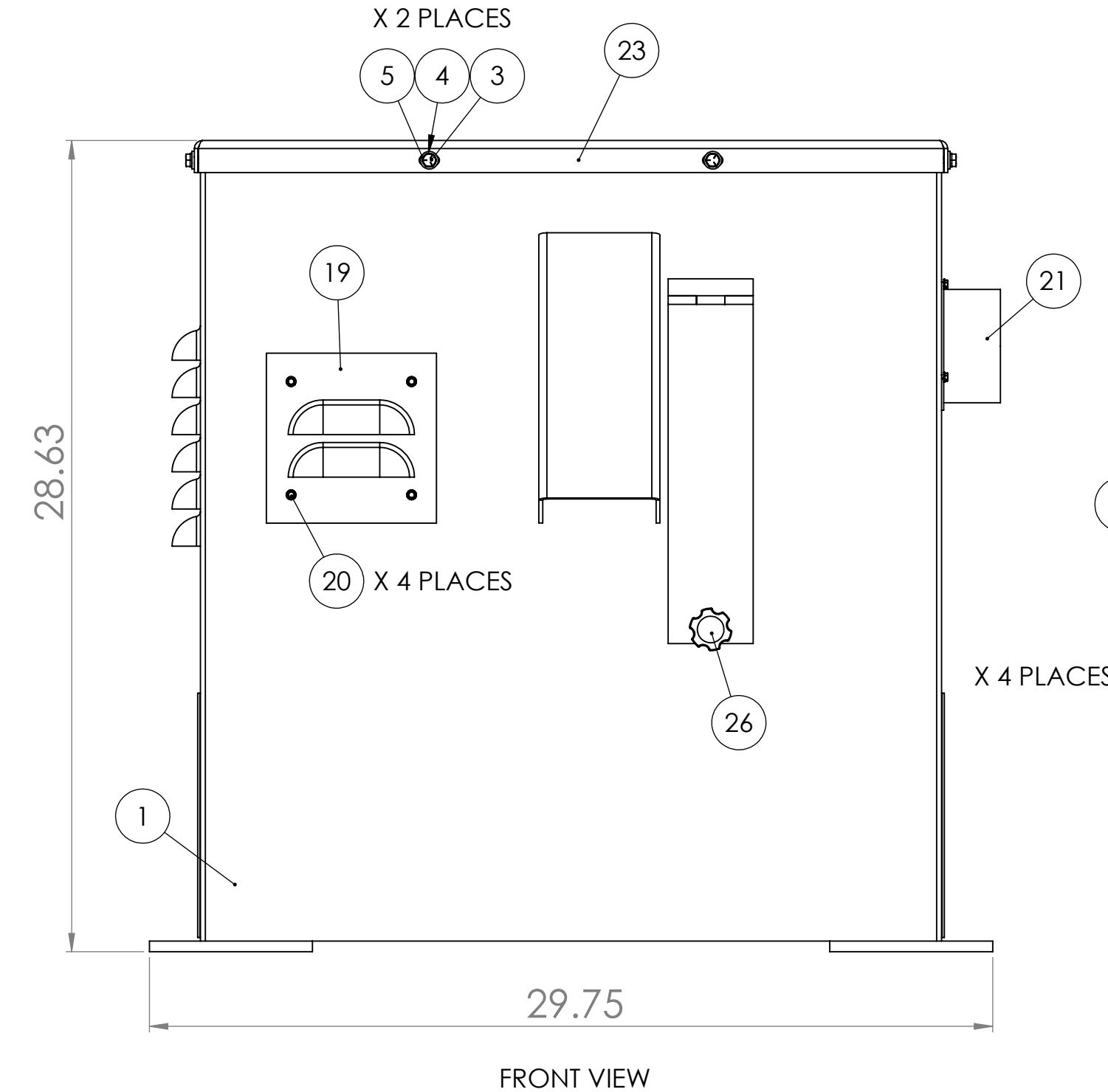
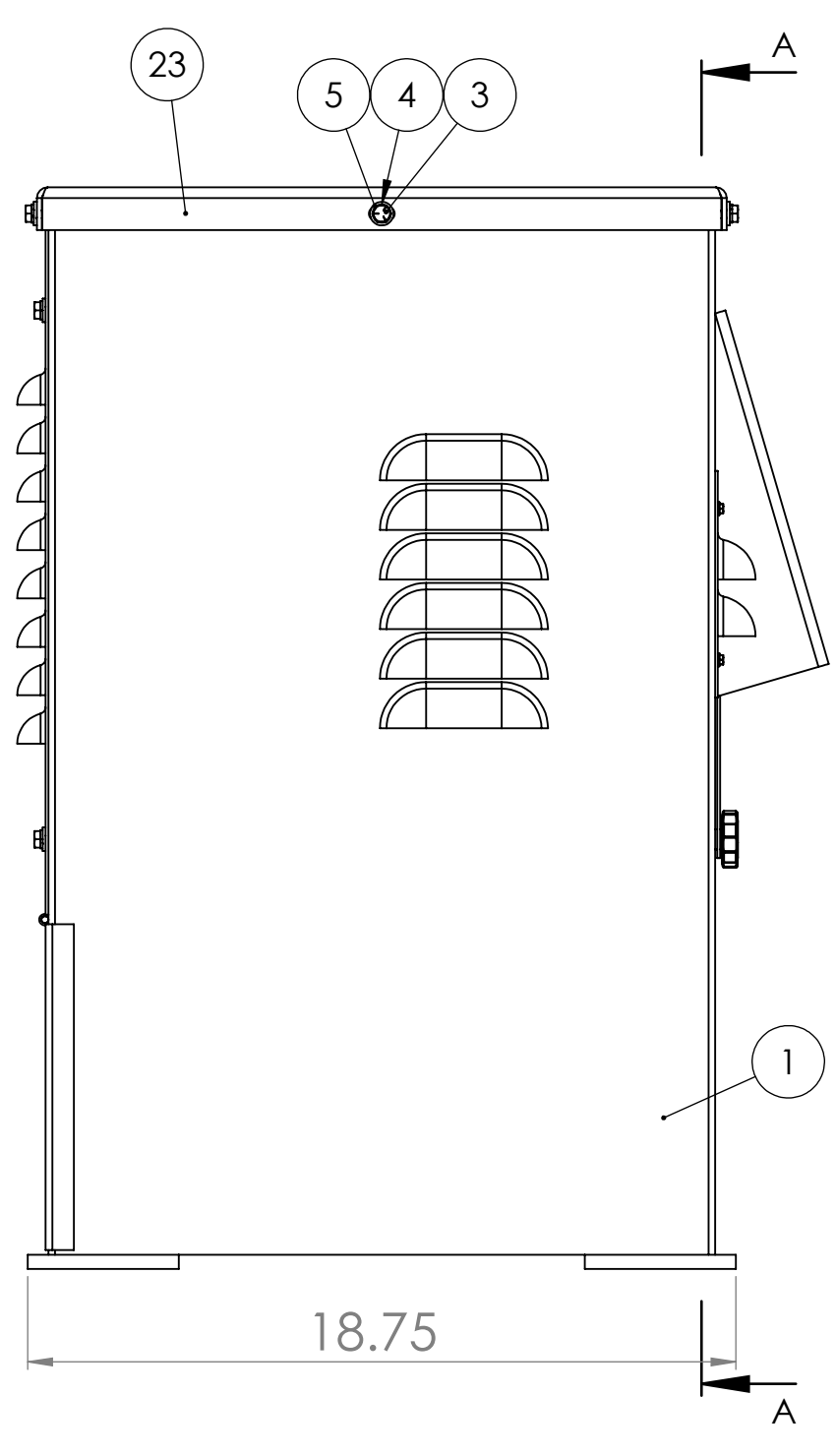
UNLESS OTHERWISE SPECIFIED:	DRAWN	NAME	DATE
DIMENSIONS ARE IN INCHES	CHECKED		
TOLERANCES:	ENG APPR.		
FRACTIONAL ±	MFG APPR.		
ANGULAR ±			
BEND ±			
TWO PLACE DECIMAL ±			
THREE PLACE DECIMAL ±			
INTERPRET GEOMETRIC TOLERANCING PER:			
MATERIAL:			
FINISH:			
APPLICATION:			

TITLE:	S660M BELT SANDER ASSEMBLY
SIZE:	DWG. NO. S660M
SCALE:	1:5 WEIGHT: SHEET 1 OF 1

8 7 6 5 4 3 2 1



ITEM NO.	PART NUMBER	DESCRIPTION	QTY.
1	124-005	CABINET FOR DCV-6 DUST COLLECTOR	1
2	124-005-BACKPANEL	BACK PANEL ASSEMBLY FOR DCV-6 CABINET	1
3	HHC5025012	1/4-20 X 3/4 HHCS GR5 Z	12
4	SLWZ025	1/4 SPLIT L/W Z	16
5	UFWZ025	1/4 USS F/W Z	12
6	041-015	DCV-6 VACUUM MOTOR MOUNT BRACKET	1
7	486-002	1HP, 1PH, 3450RPM, 56F, 115/230 FOR 2FSM-1HP, 2FS72M-1HP, S272, S4S-1HP, S4SWB, S460	1
8	HHC5031012	5/16-18 X 3/4 HHCS GR5 Z	4
9	UFWZ031	5/16 USS F/W Z	12
10	SLWZ031	5/16 SPLIT L/W Z	8
11	HHC5031016	5/16-18 X 1 HHCS GR5 Z	4
12	FHN5031	5/16-18 FHN GR5 ZINC	4
13	386-026	HOUSING FAN FOR DCV-6	1
14	HHC5037016	3/8-16 X 1 HHCS GR5 Z	4
15	296-001	FAN, SQUIRREL CAGE FOR DCV-6	1
16	SSKA025004	1/4-20 X 1/4 SOC SET KNURL PT.	1
17	004-005	ADAPTOR, INLET CONE FOR DCV-6	1
18	BSCA025008	1/4-20 X 1/2 BSHCS	4
19	455-018	SMALL LOUVER PANEL FOR DCV-6 DUST COLLECTOR	1
20	HWZ008008	#8 X 1/2 HWH TEKS Z	7
21	342-069B	4" ORIFACE W/ FLANGE FOR 6" SANDER GUARDS	1
22	294-003	FILTER FOR DCV-6	1
23	124-006	VACUUM CABINET TOP FOR DCV-6	1
24	834-002	DUST TRAY FOR DCV-6	1
25	933-001 X 65 INCHES	65 INCHES OF WEATHER STRIPPING AROUND CABINET LOWER ACCESS DOOR	1
26	441-015	907B-2500-1.00S 1/4 THUMBSCREW 1-1/2 DIA	1



LEFT SIDE VIEW

FRONT VIEW

SECTION A-A
MAIN INTERIOR VIEW

RIGHT SIDE VIEW

SECTION B-B
FAN HOUSING INTERIOR DETAILS

PROPRIETARY AND CONFIDENTIAL
THE INFORMATION CONTAINED IN THIS DRAWING IS THE SOLE PROPERTY OF KALAMAZOO INDUSTRIES, INC. ANY REPRODUCTION IN PART OR AS A WHOLE WITHOUT THE WRITTEN PERMISSION OF KALAMAZOO INDUSTRIES, INC. IS PROHIBITED.

UNLESS OTHERWISE SPECIFIED:		NAME	DATE	
DIMENSIONS ARE IN INCHES		DRAWN		
FRACTIONAL ±		CHECKED		TITLE:
ANGULAR ± MATCH ± BEND ±		ENG APPR.		DCV-6 DUST COLLECTOR
TWO PLACE DECIMAL ±		MEG APPR.		SIZE DWG. NO.
THREE PLACE DECIMAL ±		Q.A.		D DCV-6
INTERPRET GEOMETRIC TOLERANCING PER:		COMMENTS:		SCALE: 1:5 WEIGHT:
MATERIAL				SHEET 1 OF 1
FINISH				
APPLICATION	DO NOT SCALE DRAWING			

8 7 6 5 4 3 2 1