

**BELT TRACKING** - SANDING BELT TRACKING IS DONE WITH TRACKING KNOB (#20) ON YOKE ASSEMBLY. TIGHTENING KNOB (#20) RAISES IDLER SPINDLE (#34) AND THE BELT MOVES TOWARD THE MOTOR. LOOSENING TRACKING KNOB (#20) DROPS IDLER SPINDLE AND THE SANDING BELT MOVES AWAY FROM THE MOTOR. WHEN BELT IS CENTERED ON PLATEN (#6) TIGHTEN JAM NUT ON TRACKING KNOB (#20) TO LOCK IN BELT POSITION.

IF YOUR SANDER IS NOT TRACKING, POSSIBLE CAUSES COULD BE...

- DRIVE PULLEY LOST ITS CROWN (CURVATURE OF PULLEY).
- SANDING BELTS ARE NOT SPLICED SQUARE.
- UPPER PULLEY ASSEMBLY NOT SQUARED TO PLATEN.
- (USE CARRIAGE BOLTS (#13) TO SQUARE YOKE WITH PLATEN.)

**SANDING HEAD POSITION** - SANDING HEAD CAN BE POSITIONED FROM VERTICAL TO HORIZONTAL WITH ANY ANGLE IN BETWEEN. LOOSEN 5/16" (#8) SOCKET HEAD CAP SCREWS LOCATED IN BASE (#4) WHILE HOLDING SANDING HEAD FIRMLY. SANDING HEAD/FRAME (#26) IS LOCKED IN POSITION BY SQUEEZING BEARING HOUSING ASSEMBLY (#28) AGAINST BASE (#4). WHEN DESIRED POSITION IS REACHED, TIGHTEN 5/16" CAP SCREWS TO LOCK IN SANDING HEAD.

**PLATEN** - LOCATED BEHIND SANDING BELT IS REVERSIBLE.

NORMAL WEAR WILL OCCUR AND PLATEN WILL NEED TO BE ROTATED OCCASIONALLY DEPENDING ON USAGE. REMOVE SANDING BELT, REMOVE PLATEN SCREWS (#7) AND ROTATE PLATE TO NEW POSITION.

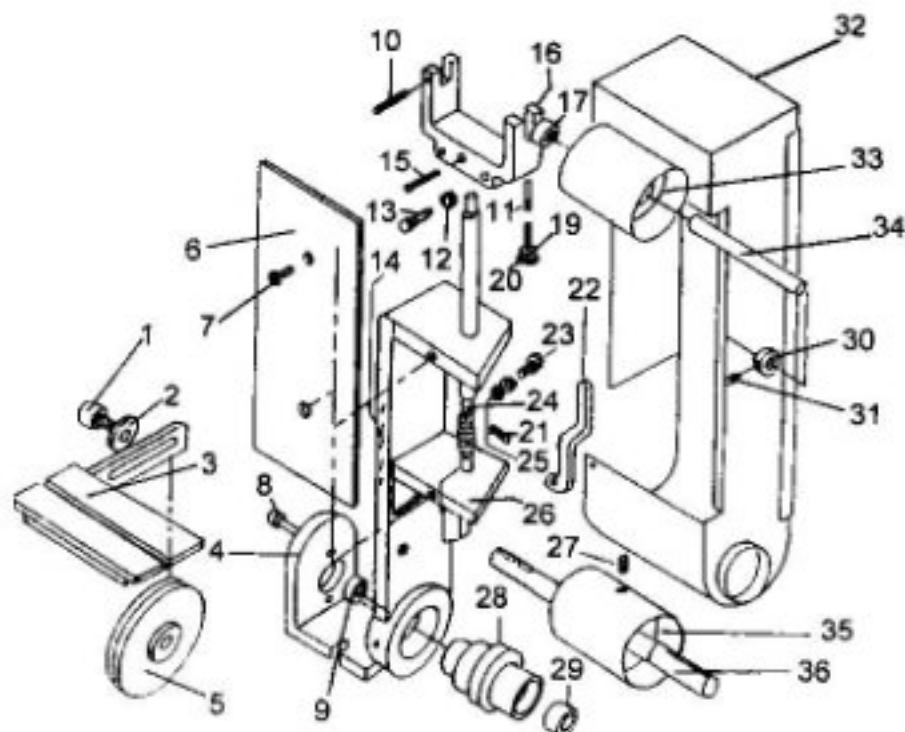
NOTE: CONTINUOUS SANDING ON THE SAME AREA OF PLATEN WILL RESULT IN PREMATURE BELT BREAKAGE. MOVE WORK PIECE TO DIFFERENT AREAS OF PLATEN TO EXTEND PLATEN AND BELT LIFE.

**WORK TABLE** - (#3) WORKTABLE HAS KEYWAY FOR FIXTURE OR MITRE GAGE LOCATION. ALSO TWO MOUNTING HOLES ARE PROVIDED ON SIDE OF FRAME (#26) TO MOVE TABLE TO DIFFERENT WORK HEIGHTS FOR LONGER BELT OR PLATEN LIFE.

NOTE: KEEP WORKTABLE WITHIN 1/8" OF SANDING BELT.

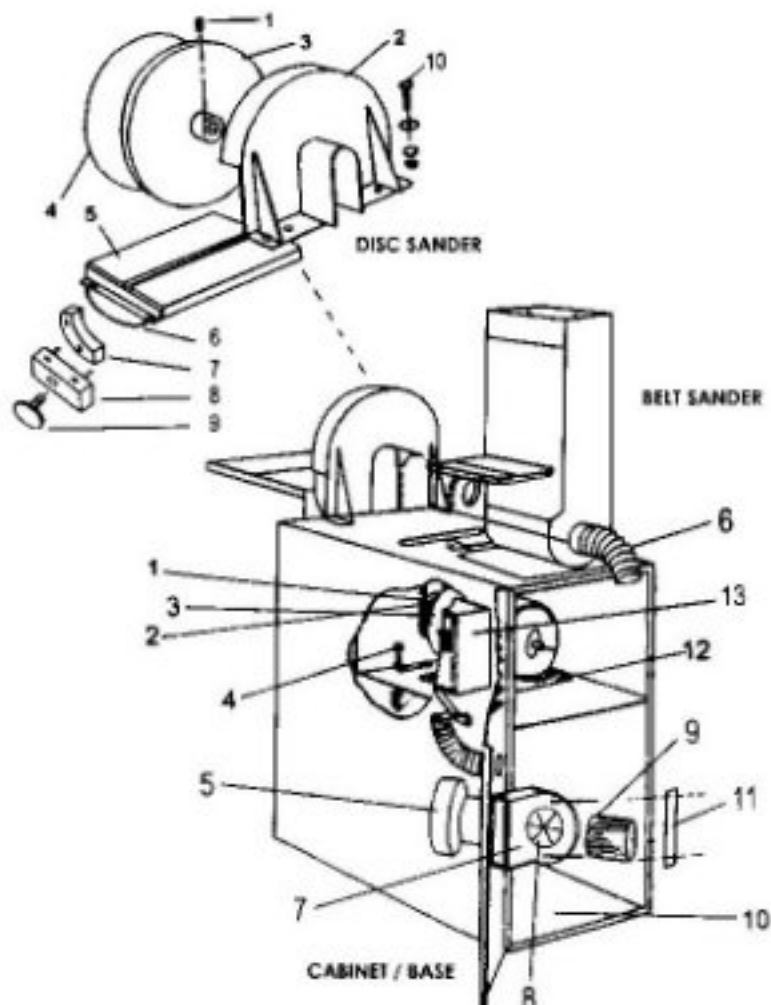
## S6 Sander head (S612)

### BELT SANDER PARTS DIAGRAM



No.	Part No.	Description	QTY
1		1/2-13x1-1/2 S.H.C.S	1
2		1/2" Washer	1
3	829-012	Work Table	1
4	050-025	56HW/568MW Base	1
5	560-051	Spindle Pulley	1
	049-019	Spindle Bushing (Not Shown)	1
6	563-002	Reversible Platen	1
7		5/16-18x1F.H.S.C.S	
8		5/16-18x1-1/4 S.H.C.S	
9	044-007	K10 Bearing	1
10		3/16x2 Roll Pin	1
11	562-018	Pin	1
12		Nut	1
13		1/4-20x2 Carriage Bolt	2
14		Serial Number	1
15		3/16x2 Roll Pin	1
16	960-006	Yoke	1
17	044-001	Bearings	2
19		Locking Nut	1
20	443-014	Knob	1
21		3/16x2 Roll Pin	1
22	453-003	Tension Lever	1
23		Bolt	1
24	700-004	Shaft	1
25	697-024	Tension Spring	1
26	291-004	Frame	1
27		1/4-20x3/4 S.S.S	1
28	386-013	Bearing Housing	1
29	044-001	Bearing	1
30	123-014	Locking Collars	2
31		Set Screw	1
32	342-009	OSHA Guard	1
33	540-013PA	Idler Pulley Assembly	1
34		Idler Spindle (Sold only with idler pulley)	1
35	560-015	Drive Pulley	1
36	701-025	Drive Spindle	1
	960-006YA	Yoke Assembly (optional)	1

# CABINET AND DISC SANDER PARTS DIAGRAM S612V-1, S612V-3



## Disc Sander

No.	Part No.	Description	QTY
1		Set Screw	1
2	342-036	Disc Guard	1
3	160-002	Aluminum Disc Holder	1
4		12" Sanding Disc	1
5	829-035	Cast Iron Work Table	1
6	831-031	Trunnion/Bracket	1
7	146-009	Clamp	2
8	853-132	Blocks	2
9	441-033	Knobs	2
10		Bolts	2

## Cabinet/Base

No.	Part No.	Description	QTY
1	051-007	V-Belts (2 Required)	2
2	160-052	2-Groove Motor Pulley (Bushing Sold Separately)	1
	049-020	Motor Bushing (Not Showing)	1
3	486-006	3Hp 1Ph Drive Motor	1
	486-007	3Hp 3Ph Motor	1
4		5/16-18x1-1/2	2
5	486-022	1/2Hp 1Ph Vac Motor	1
	486-030	1/2Hp 3Ph Vac Motor	1
6	389-002	4" Vac Hose (4' required)	1
7	389-031	Fan Housing	1
8	296-003	Fan Housing	1
9	294-006	Filter Cartridge	1
10	150-001	Cabinet & Base	1
11	041-063	Bracket	1
12	050-026	Motor Base Assembly	1
13		Switch (Call For Part Number)	1

## WARRANTY

All products are guaranteed for a period of one year to the original purchaser, against defects in material workmanship under normal use. Electric motors are warranted by the motor manufacturer and will be repaired by the nearest motor repair station. If non-repairable, they will be replaced by Kalamazoo Industries. Please call for instructions 269-382-2050.

## RETURN POLICY

Authorization must be obtained before returning merchandise. Please call our customer service department for a return authorization number at 269-382-2050. Please include with your return a copy of your invoice or packing slip. Materials must be sent back prepaid. (Unless otherwise indicated). All returns will be subject to a 10% restocking charge. No returns will be accepted after one year of invoice date.

**KALAMAZOO INDUSTRIES, INC.**  
 6856 East K Avenue  
 Kalamazoo, MI 49048  
 269-382-2050 PH  
 269-382-0790 FAX  
[www.kalamazooindustries.com](http://www.kalamazooindustries.com)



Made in U.S.A.