



PH: (269) 382-2050

www.kalamazooind.com

KS690HV-5 6" X 90" BELT GRINDER INSTRUCTION MANUAL



MADE IN USA



PH: (269) 382-2050

www.kalamazooind.com

WARRANTY

All products are guaranteed for a period of one year from receipt of order to the original purchaser, against defects in material workmanship under normal use. Electric motors are warranted by the motor manufacturer for a period of one year and will be repaired by the nearest motor repair station. If non-repairable, they will be replaced by Kalamazoo Industries. Please call for instructions (269) 382-2050.

RETURN POLICY

Authorization must be obtained before returning merchandise. Please call our customer service department for a return authorization number (269) 382-2050. Please include with your return a copy of your invoice or packing slip. All material must be new and unused in the original packaging. Material must be sent back prepaid (unless otherwise indicated) by Kalamazoo Industries. Credit upon inspection at Kalamazoo Industries. All returns will be subject to a 10% restock charge. Used merchandise is non-returnable. No returns will be accepted after one year of invoice date.

BELT GRINDER SAFETY

- READ THE OPERATING INSTRUCTIONS BEFORE RUNNING MACHINE.
- ALWAYS WEAR SAFETY GLASSES OR A FULL FACE SHIELD FOR PROTECTION.
- KEEP HANDS CLEAR OF THE SANDING AREA.
- NEAR WEAR GLOVES OR LOOSE FITTING CLOTHES WHEN OPERATING THIS MACHINE.
- ALWAYS KEEP HAIR TIED BACK OR COVERED.
- LET MACHINE ROTATION COME TO A FULL STOP BEFORE CHANGING BELT.
- KEEP SAFETY GUARDS IN PLACE. DO NOT ALTER GUARD OR MACHINE IN ANYWAY. ANY ALTERATIONS TO GUARDS OR MACHINE COULD CAUSE SERIOUS INJURY.
- ALL BELT SANDERS SHOULD BE OPERATED IN A WELL-VENTILATED AREA. THE DUST CREATED WHEN SOME MATERIALS ARE SANDED CAN BE HARMFUL. DUST MASKS ARE RECOMMEND AS A PRACTICAL MEAN OF MINIMIZING DUST INHALATION. FUMES FROM OTHER OTHER SOURCES CAN ALSO CAUSES FIRES WHEN INTACT WITH SANDING SPARK.
- SPARKS CREATED BY SANDING SHOULD BE DIRECTED DOWNWARD AND AWAY FROM THE FACE AND BODY. DON NOT GRIND NEAR FLAMMABLE MATERIAL.
- ELECTRIC GRINDING MACHINES ARE NOT INTENDED FOR USE IN OR NEAR WATER. THIS INCLUDES AN OPERATOR STANDING ON A WET FLOOR OR WORKING AROUND CONTAINERS OF WATER OR OTHER CONDUCTIVE LIQUIDS.



PH: (269) 382-2050

www.kalamazooind.com

READ AND UNDERSTAND ALL OPERATING INSTRUCTIONS AND SAFETY PRECAUTIONS BEFORE OPERATING UNIT

OPERATING INSTRUCTIONS

INSPECT YOUR NEW UNIT CAREFULLY FOR SIGNS OF SHIPPING DAMAGE. IF DAMAGED, PLEASE CONTACT CARRIER AND SUBMIT A CONCEALED DAMAGED REPORT. DO NOT RETURN GOODS TO US WITHOUT OUR RGA NUMBER AND SHIPPING INSTRUCTIONS. SEE PAGE 2 FOR RETURN POLICY AND WARRANTY.

BEFORE STARTING OR CONNECTING ELECTRICALS, VERIFY THE PHASE AND VOLTAGE OF THE UNIT.

BE SURE MACHINE IS BALANCE CORRECTLY SO IT WILL NOT TIP OVER.

TO GUARD AGAINST CONCEALED DAMAGE, STAND CLEAR AND OBSERVE UNIT FOR THE FIRST FEW MINUTES OF OPERATION. GUARDS MUST NEVER BE REMOVED. KEEP ALL SAFETY GUARDS, WORK TABLES, ETC, IN PROPER ADJUSTMENT. WORK TABLE MUST BE KEPT WITHIN 1/8" FROM THE SANDING BELT.

ABRASIVE BELT TENSION

ABRASIVE BELT IS CONTROLLED BY SPRING TENSIONS. THE TENSIONS RELEASE LEVER (#21) CONTROLS THE BELT TENSION. PULL (#21) OUT TO RETRACT HEAD, WHICH WILL RELEASE BELT TENSION. PUSH (#21) IN TO EXTEND HEAD, WHICH WILL APPLY TENSION TO THE SANDING BELT. ADJUST THE BELT TENSION TO THE MINIMUM SUFFICIENT TO ENSURE GOOD CONTACT WITH THE DRIVE AND IDLER WHEELS. THEN THE BELT WILL TRACK PROPERLY UNDER BOTH START UP AND GRINDING CONDITIONS..

PLATEN ALIGNMENT

USING A STRAIGHT EDGE, SET THE STRAIGHT EDGE ON THE PLATEN (#29) SO IT SPANS ACROSS BOTH THE DRIVE AND CONTACT WHEEL PULLEY FACES. DRIVE PULLEY CLEARANCE SHOULD BE 1/8" LOWER THAN PLATEN FACE AT THE OUTER EDGES OF THE DRIVE PULLEY. CONTACT WHEEL CLEARANCE SHOULD BE 1/32" LOWER THAN PLATEN FACE. USE BRACKETS (#27) TO LOWER OR RAISE PLATEN HEIGHT.

DRIVE PULLEY

POOR BELT TRACKING CAN RESULT FROM NORMAL WEAR OVER TIME OF THE DRIVE PULLEY. THE DRIVE PULLEY FACE IS CROWNED SLIGHTLY TO HOLD BELT TRACKING. WHEN THE CROWN IS WORN DOWN AND THE DRIVE PULLEY BECOMES FLAT FACED, TRACKING PROBLEMS WILL RESULT. A QUICK FIX WOULD BE TO WRAP A FEW LAYERS OF MASKING TAPE AROUND THE CENTER HIGHER THAN THE OUTER EDGES IF THIS ALLEVIATES THE PROBLEM, THEN A NEW PULLEY WILL BE NEEDED WITH THE CORRECT CROWN ON IT.

CHANGING BELT

TURN MACHINE POWER OFF. RELEASE BELT TENSION WITH TENSION RELEASE HANDLE (#21), CHANGE THE BELT (MAKE SURE OF THE CORRECT ROTATION). RE-TENSION THE BELT WITH (#21).



PH: (269) 382-2050

www.kalamazooind.com

OPERATING INSTRUCTIONS CONTINUED

DUST COLLECTOR

IF YOUR GRINDER HAS A DUST COLLECTOR SYSTEM BE SURE TO THOROUGHLY CLEAN THE BASE AND FILTER AFTER EVERY USE AND OR SWITCHING MATERIALS. **DO NOT MIX MATERIALS. MIXING MATERIALS COULD CAUSE A FIRE.**

TRACKING THE BELT

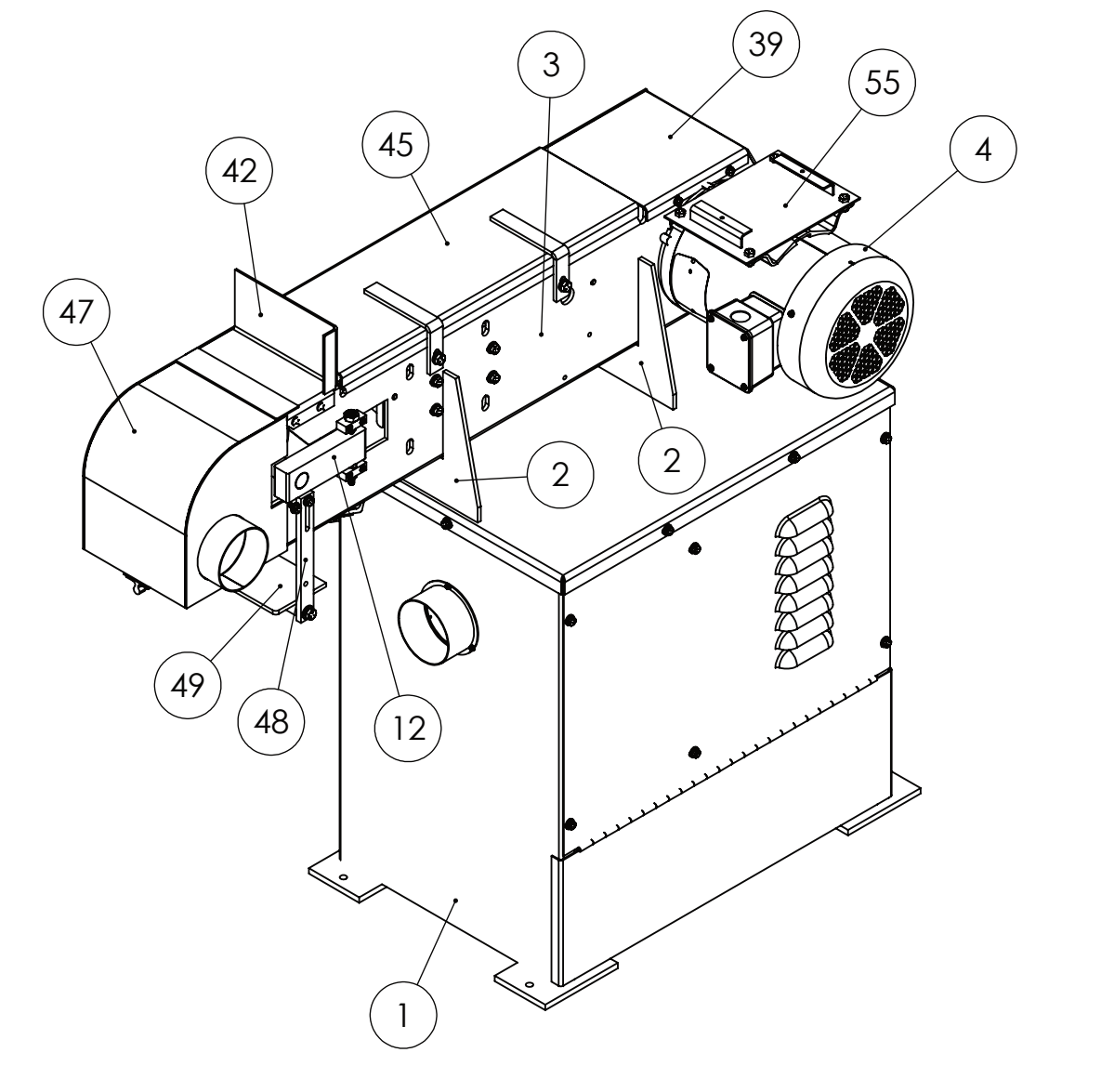
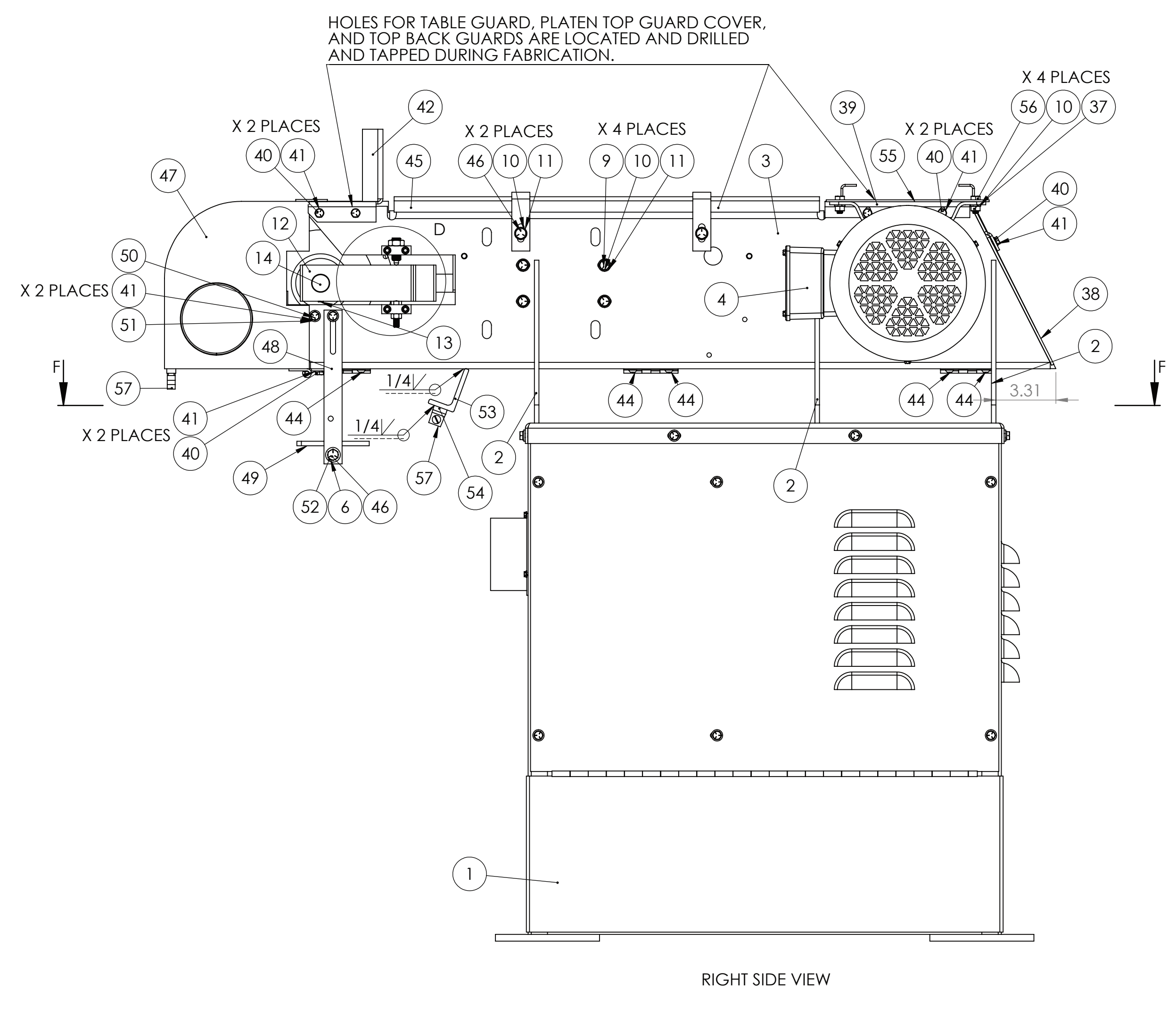
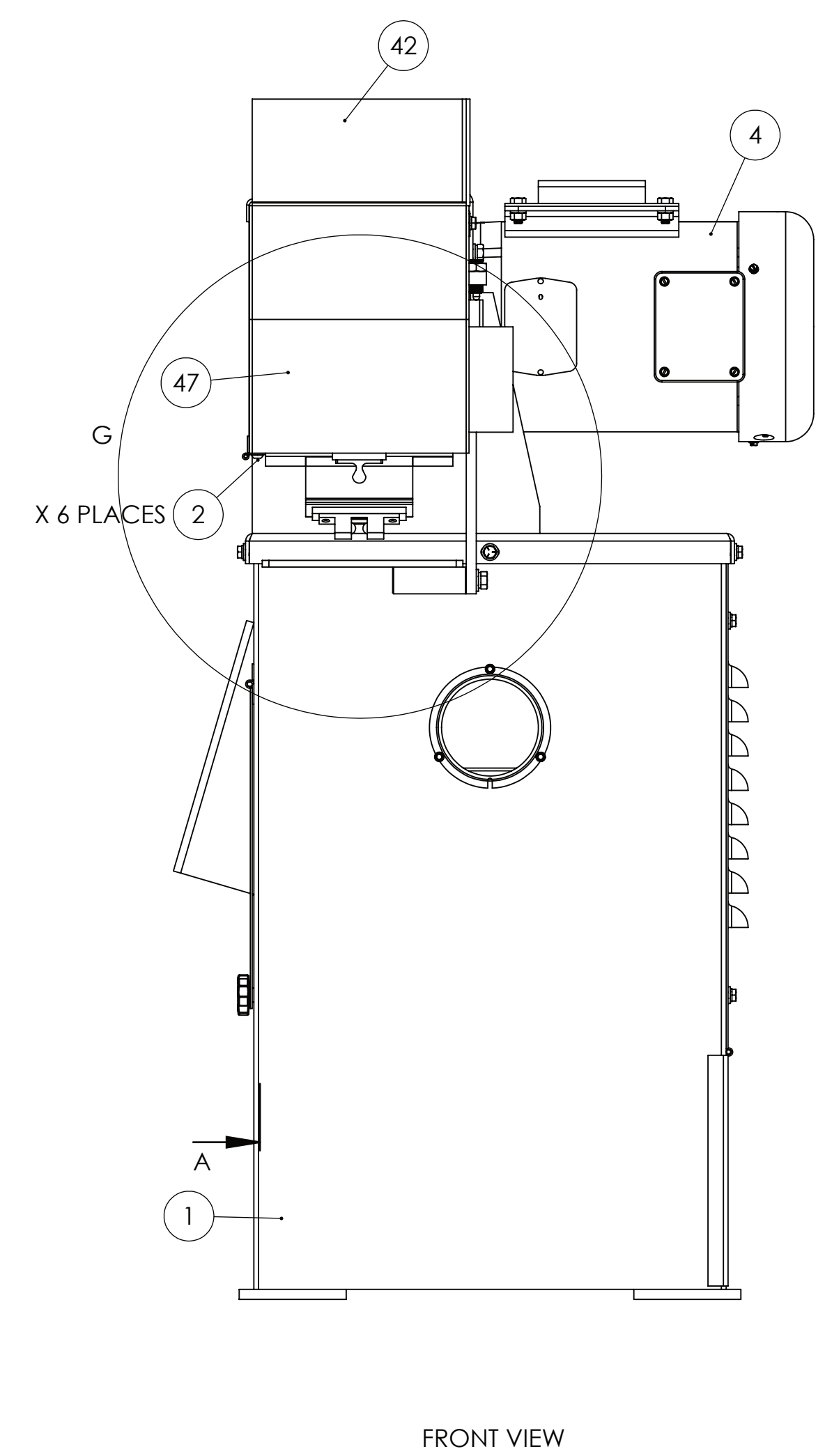
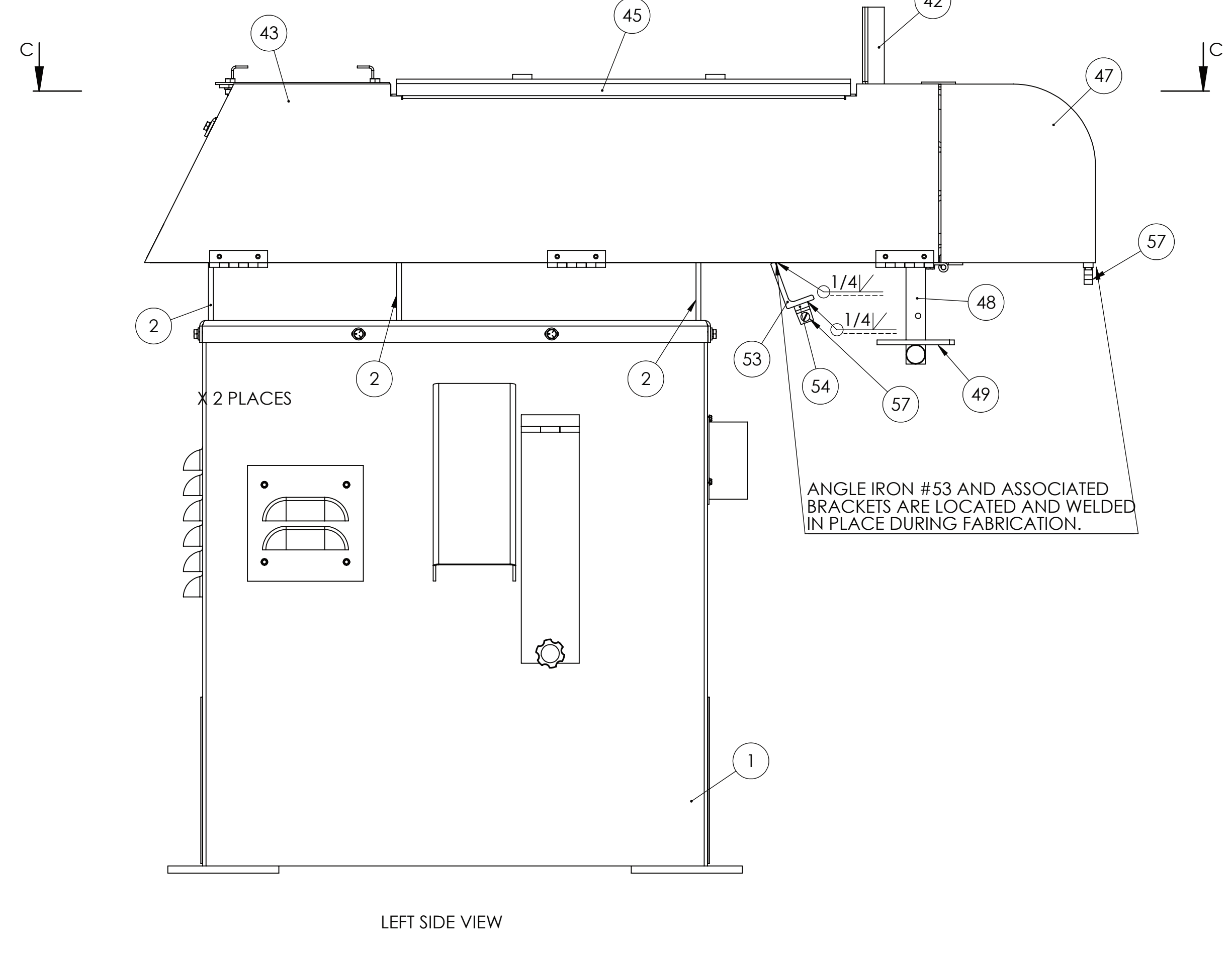
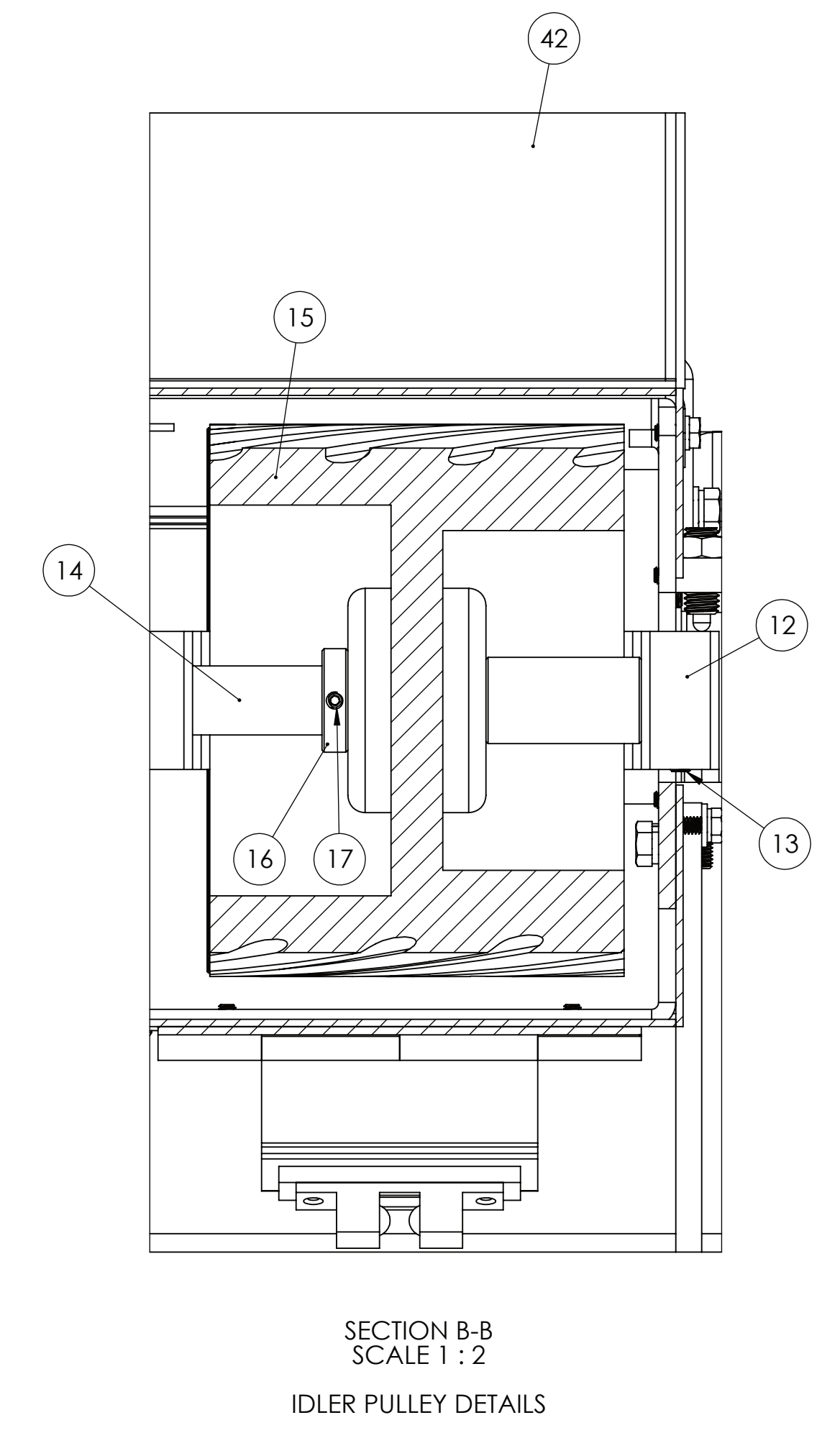
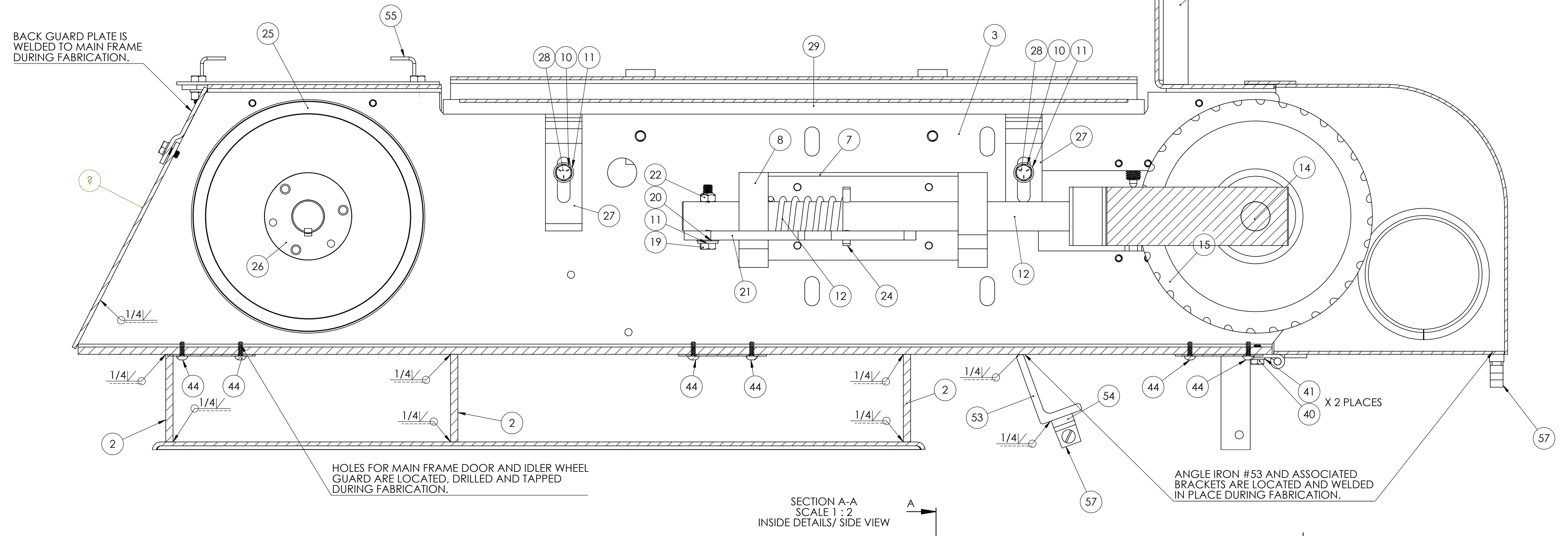
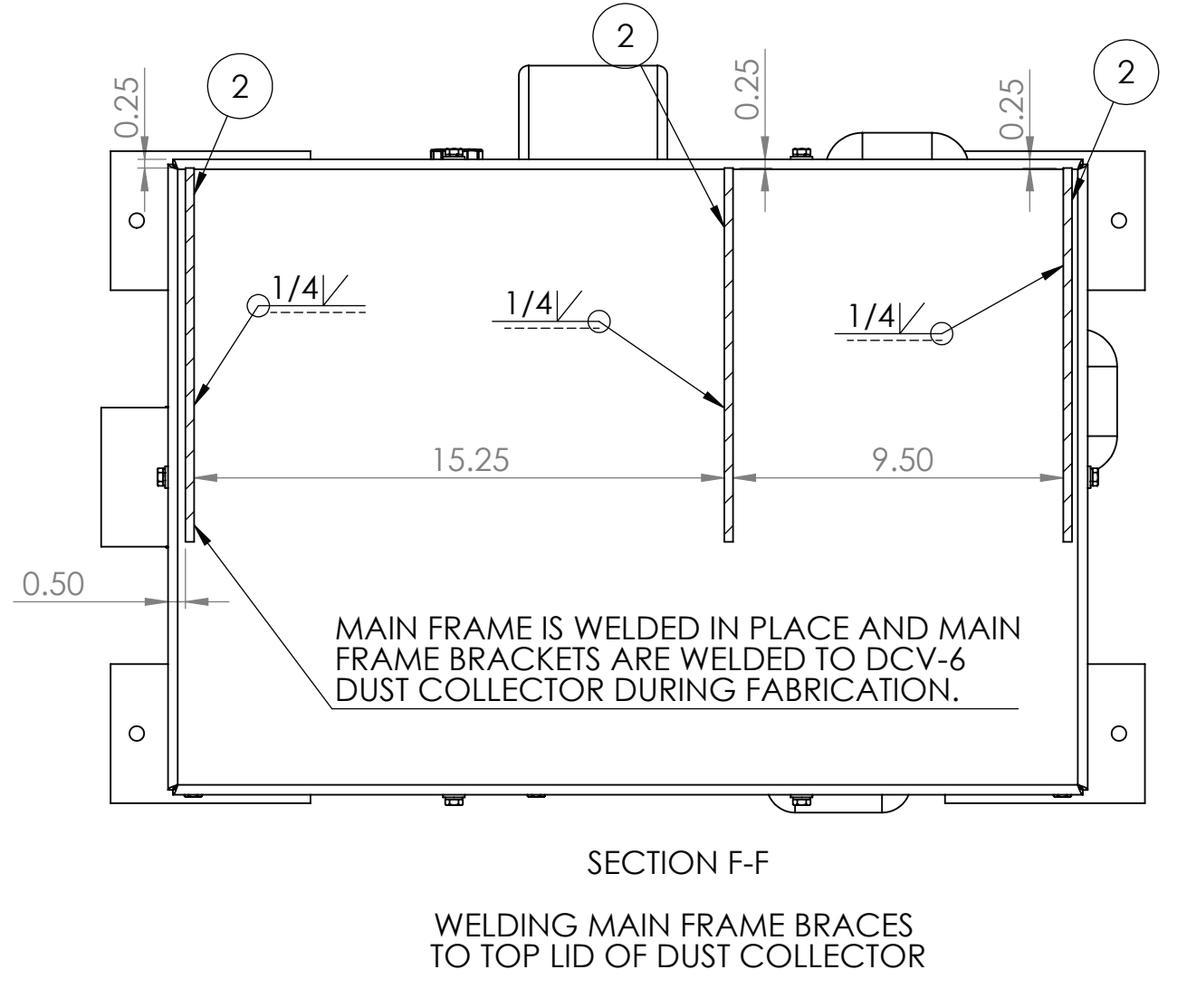
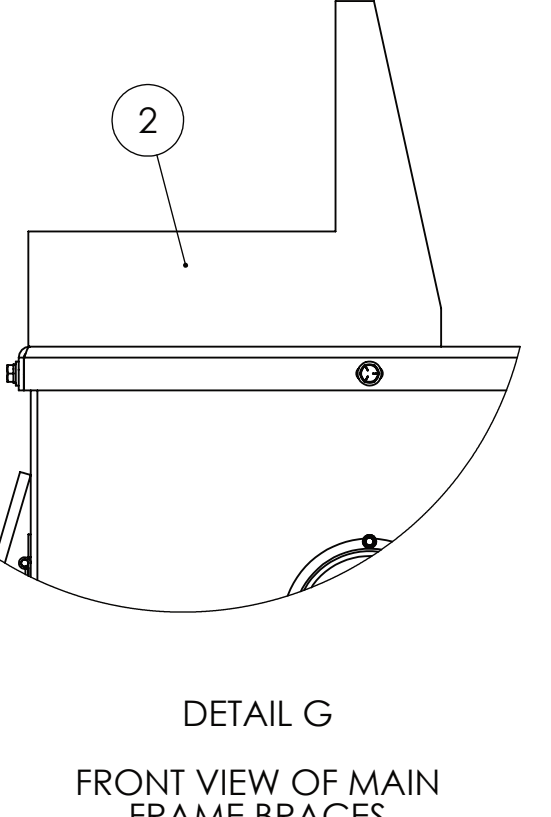
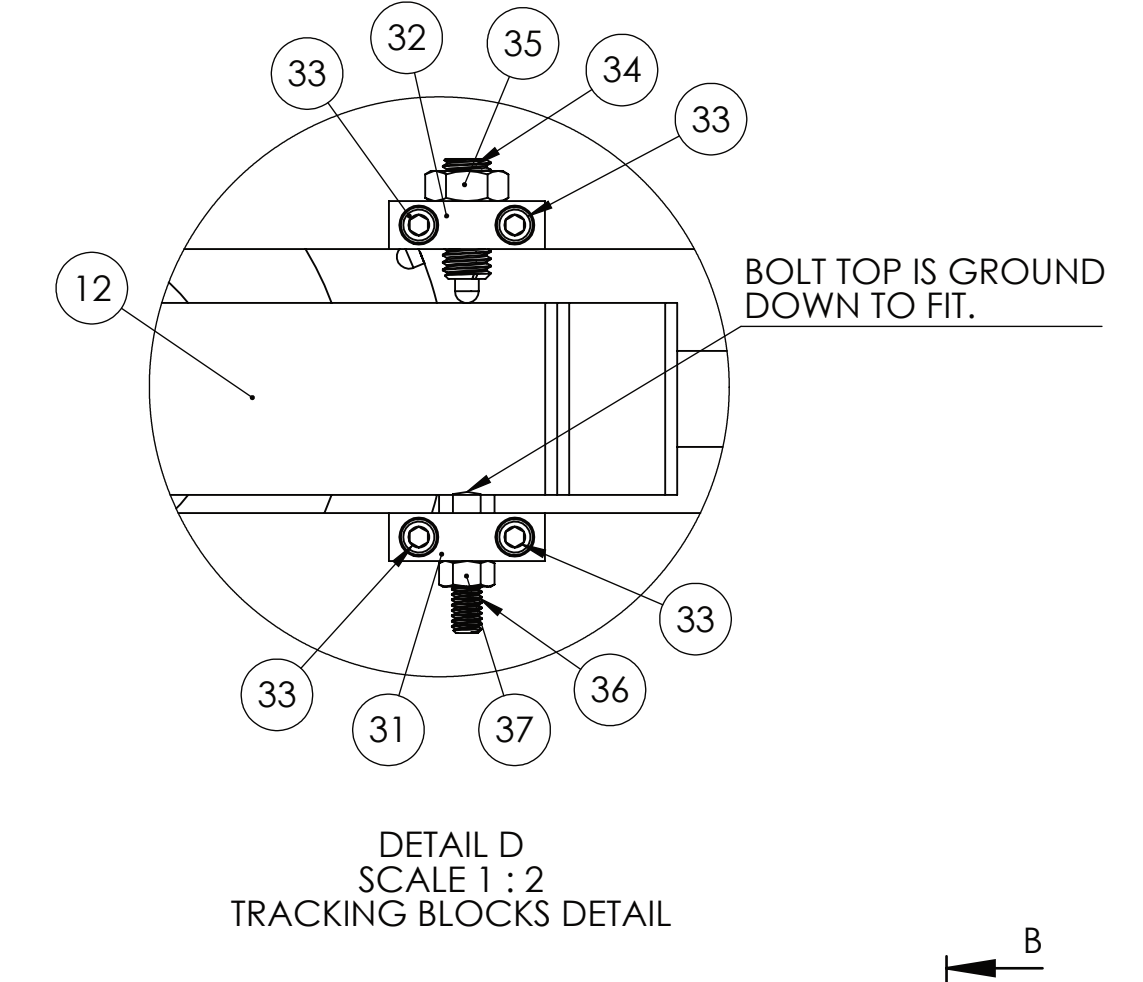
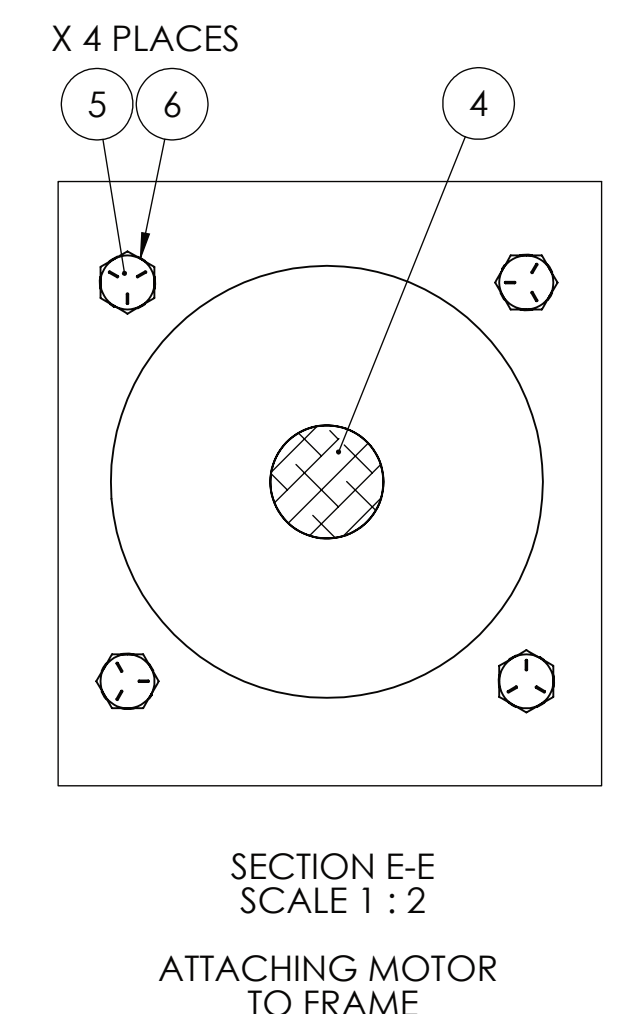
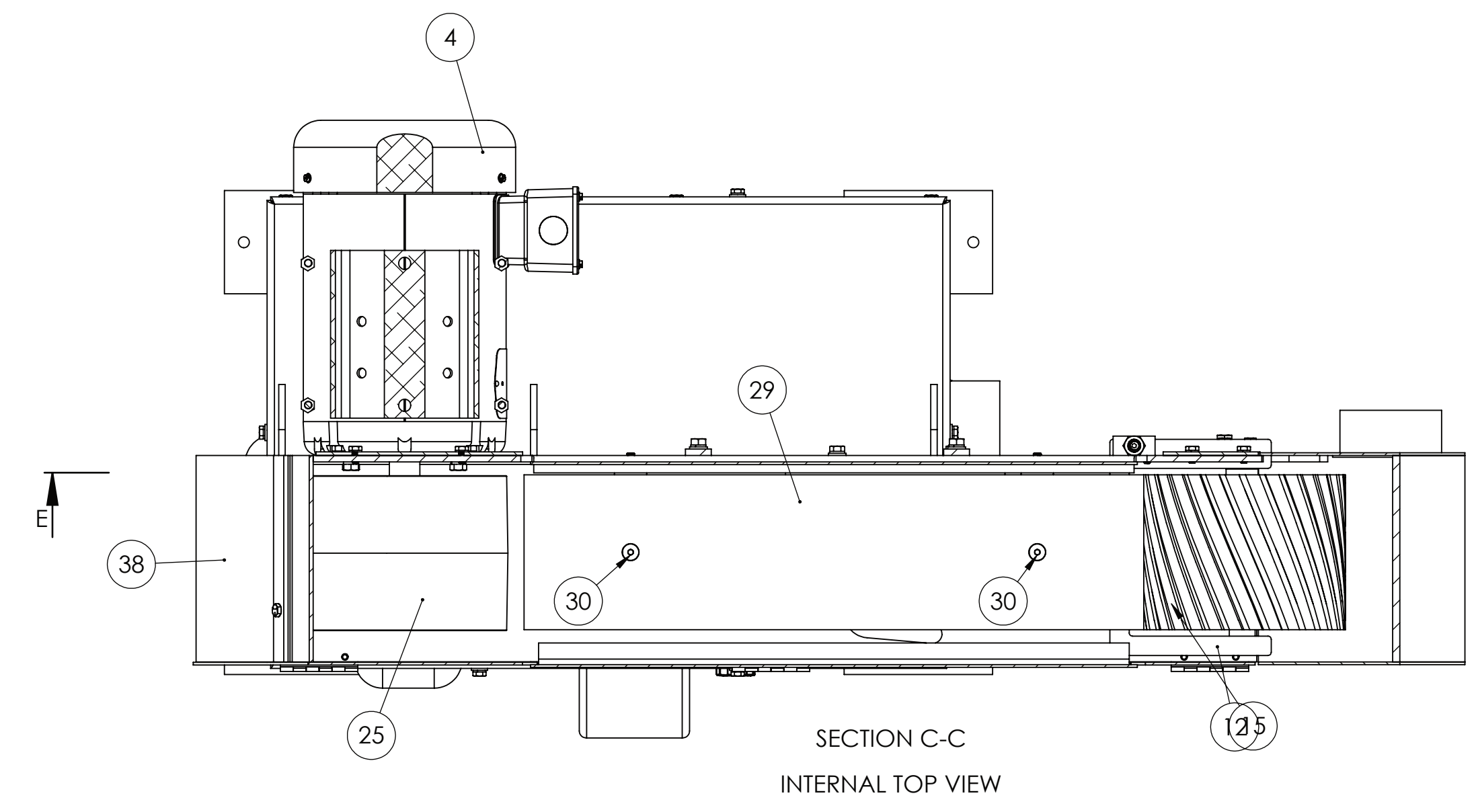
TO TRACK BELT LOOSEN (#37) THEN ADJUST (#36) UP AND OR DOWN. ONCE ABRASIVE BELT IS CENTERED LOCK (#37) TO KEEP BELT TRACKED. **BE SURE THE ABRASIVE BELT FULLY COVERS THE CONTACT WHEEL. DO NOT SLIP OFF THE ABRASIVE BELT AND RUB THE CONTACT WHEEL WITH WORK PIECE. THIS WILL RADIUS THE CONTACT WHEEL FACE EDGES AND RESULT IN POOR BELT TRACKING.**

MACHINE HEAD ANGLE

NOTE: THE GRINDER HEAD IS FIXTED AND CAN'T BE ADJUSTED

BELT STORAGE

STORE COATED ABRASIVES IN A DRY AND COOL LOCATION.



ITEM NO.	PART NUMBER	DESCRIPTION	QTY.
1	DCV-6	DCV-6 DUST COLLECTOR	1
2	041-083A	BRACE FOR KS690HV	3
3	291-045	MAIN FRAME FOR KS690 SANDER	1
4	486-001A	5 HP MOTOR FOR FOR KS390-490-690HV	1
5	HHC5037020	3/8-16 X 1-1/4 HHCS GR5 Z	4
6	SLW2037	3/8 SPLIT L/W Z	5
7	699-049	KS690 FRAME SPACER	1
8	291-018	CAST IRON FRAME FOR S460 DRY SANDERS	1
9	HHC5031032	5/16-18 X 2 HHCS GR5 Z	4
10	SLW2031	5/16 SPLIT L/W Z	12
11	UFW2031	5/16 USS F/W Z	9
12	960-021	YOKE AND SHAFT ASSEMBLY FOR KS690 SANDER	1
13	SSKA031006	1/4-20 X 3/8 SOC SET KNURL PT.	1
14	701-054	SPINDLE IDLER FOR KS690 SANDER	1
15	936-022	WHEEL CONTACT FOR KS690 SANDERS	1
16	123-016	S6 IDLER PULLEY LOCK COLLAR	1
17	SSKA025004	1/4-20 X 1/4 SOC SET KNURL PT.	1
18	699-033	SPACER, IDLER WHEEL FOR KS690	1
19	HHT5031032	5/16-18X2 HEX HEAD TAP BOLT GR5 ZINC	1
20	BWWA031	5/16 BOWED SPRING WASHER 21/64	1
21	455-003	TENSION RELEASE LEVER FOR S6	1
22	STN2031	5/16-18 STOVER LOCK NUT ZINC-WAX	1
23	697-024	S6 BELT TENSION SPRING	1
24	ROLA025024	1/4 X 1-1/2 ROLL PIN	1
25	560-062	ALUMINIUM DRIVE WHEEL FOR KS690 SERIES SANDERS	1
26	049-074	P1 X 1-1/8 SPLIT TAPER BUSHING	1
27	041-061	BRACKET, PLATEN SUPPORT FOR KS690	2
28	HHC5031016	5/16-18 X 1 HHCS GR5 Z	2
29	563-036	PLATEN FOR KS690 SANDERS	1
30	FSCA031016	5/16-18 X 1 FSHC5	2
31	053-009	TRACKING BLOCK- 5/16 THREADED HOLE	1
32	053-009B	TRACKING BLOCK- 1/2-13 THREADED HOLE	1
33	SHCA025012	1/4-20 X 3/4 SHCS	4
34	SPPA050020	1/2-13 X 1-1/4 SPRING PLUNGER W BROWN DELRIN NOSE ALLOY	1
35	FJNZ050	1/2-13 F H JAM NUT Z	1
36	HHC5031020	5/16-18 X 1-1/4 HHCS GR 5 Z	1
37	FHN5031	5/16-18 FHN GR5 ZINC	5
38	291-045BACKPANEL	KS690 MAIN FRAME REAR GUARD PANEL	1
39	291-045TOPBACK	KS690 MAIN FRAME TOP REAR GUARD	1
40	HHC5025008	1/4-20 X 1/2 HHCS GR5 Z	7
41	SLW2025	1/4 SPLIT L/W Z	9
42	829-062	TABLE, GUARD FOR KS690 SANDER	1
43	291-045DOOR	KS690 MAIN FRAME DOOR	1
44	BSCA025008	1/4-20 X 1/2 BSHCS	6
45	829-062A	KS690 PLATEN TOP GUARD COVER	1
46	HHC5037016	3/8-16 X 1 HHCS GR5 Z	3
47	342-146	IDLER WHEEL GUARD, FOR KS690HV GRINDER	1
48	455-014	ARM FOR KS390, KS490 WORK TABLE	1
49	829-042	TABLE, WORK FOR KS690 GRINDER	1
50	HHC5025012	1/4-20 X 3/4 HHCS GR5 Z	2
51	UFW2025	1/4 USS F/W Z	2
52	UFW2037	3/8 USS F/W Z	1
53	291-045ANGLEIRON	BRACKET FOR KS39HV, KS490HV, KS690HV MAIN FRAME	1
54	291-045BLOCK	LATCH MOUNTING BLOCK FOR KS39HV, KS490HV, KS690HV MAIN FRAME	1
55	041-117	SWITCH BRACKET TO MOUNT MAGNETIC SWITCH ON TO A KS390, KS490, KS690 - SHP	1
56	HHC5031012	5/16-18 X 3/4 HHCS GR5 Z	4
57	170-001	BALL CATCH-DOOR LATCH FOR MACHINE PANELS AND ENCLOSURES	1

PLEASE REFER TO DCV-6 DRAWING FOR ADDITIONAL DETAILS REGARDING THE DCV-6 DUST COLLECTOR.

UNLESS OTHERWISE SPECIFIED:
DIMENSIONS ARE IN INCHES
TOLERANCES:
FRACTIONS ± .005
DECIMALS ± .005
THREE PLACE DECIMAL ± .001
INTERFERE GEOMETRIC TOLERANCES PER
ASME Y14.5

PROPRIETARY AND CONFIDENTIAL
THIS DRAWING IS THE PROPERTY OF KALAMAZOO TOOL COMPANY. IT IS TO BE USED ONLY FOR THE PURPOSES SPECIFIED HEREIN. NO REPRODUCTION IN PART OR AS A WHOLE WITHOUT THE WRITTEN PERMISSION OF KALAMAZOO TOOL COMPANY IS PERMITTED.

DATE: _____
DRAWN BY: _____
CHECKED BY: _____
ENG APPR: _____
MFG APPR: _____
D.A.
COMMENTS:

TITLE: **KS690 HORIZONTAL VACUUM**

SIZE: DWG. NO. **E** KS690HV
SCALE: 1:5 WEIGHT: _____ SHEET 1 OF 1

APPROVAL: _____
DATE: _____
APP: _____