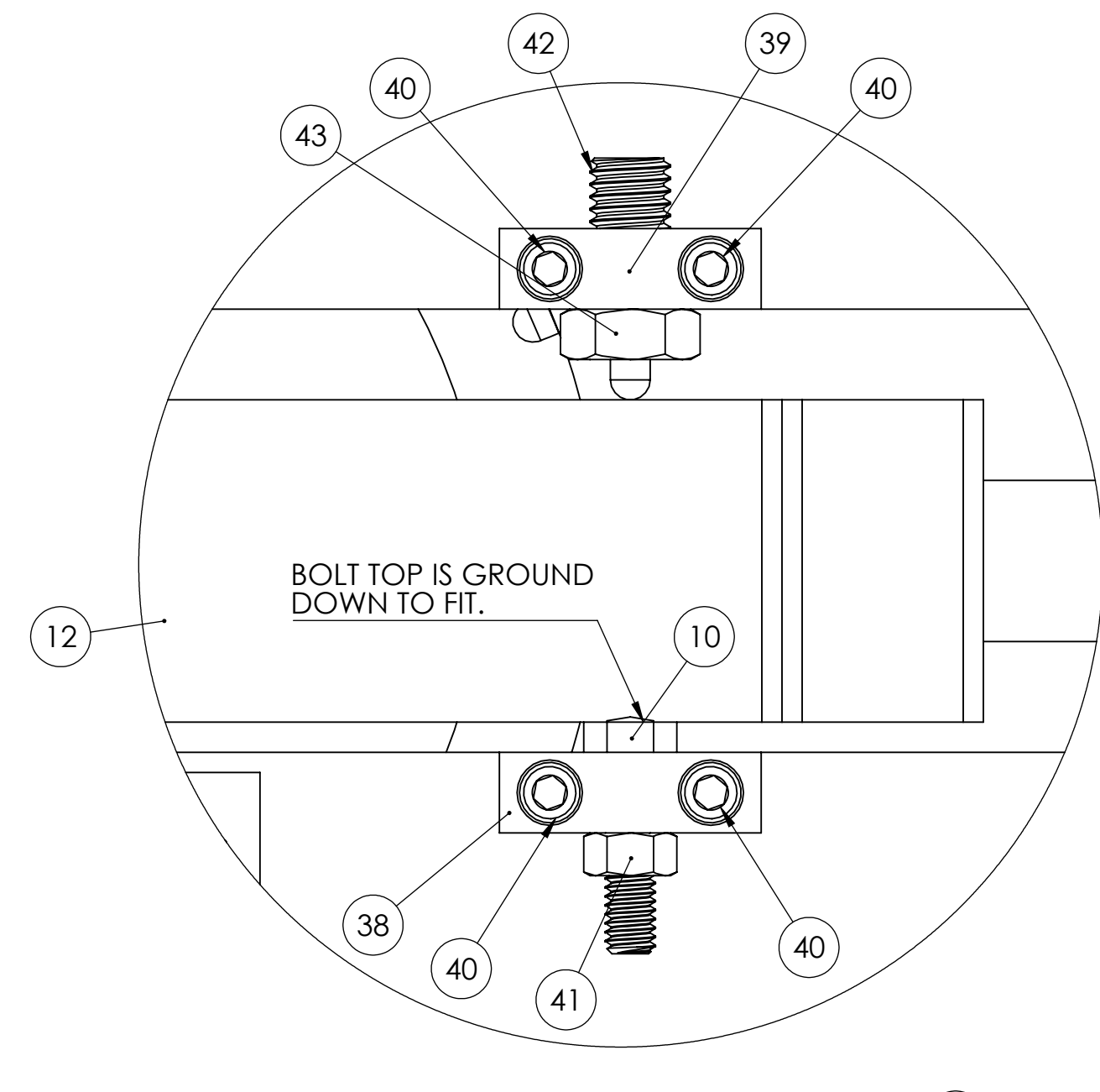
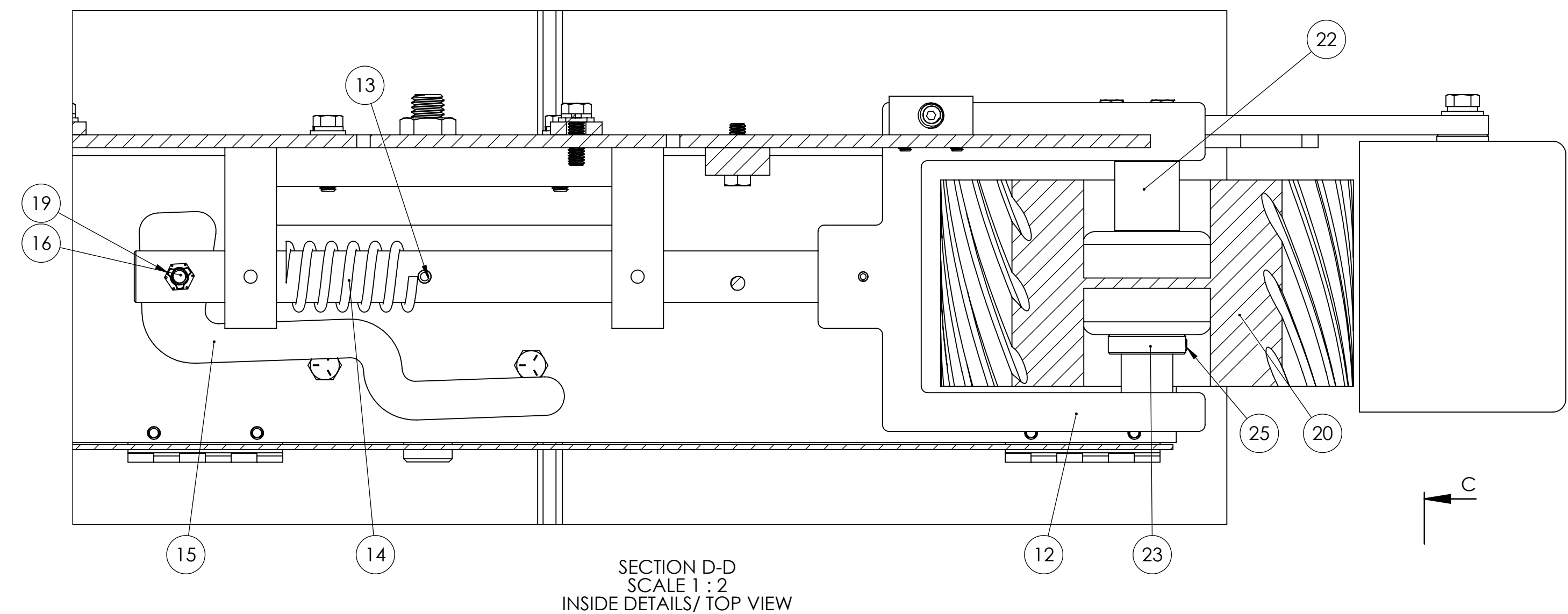
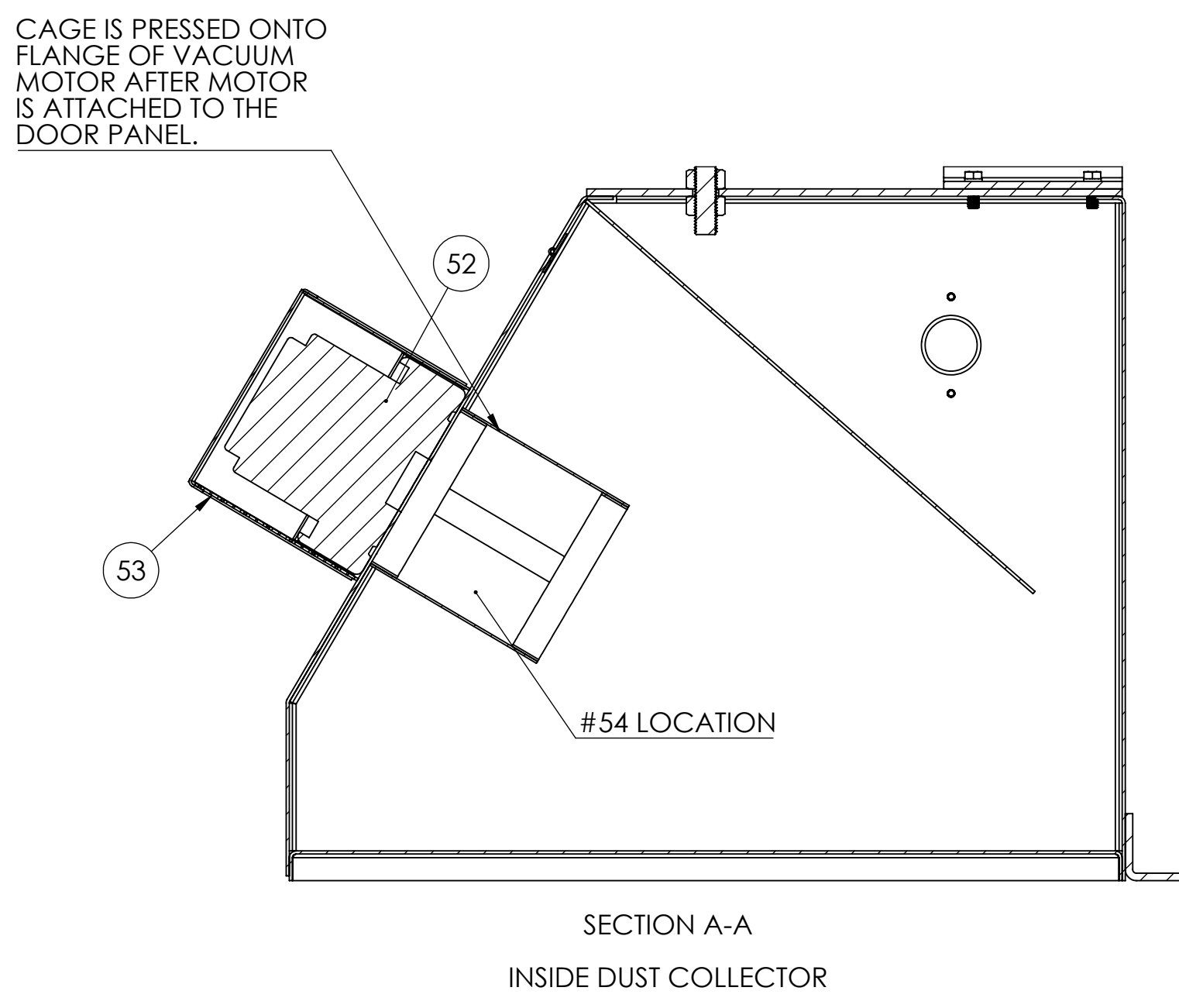


ITEM NO.	PART NUMBER	DESCRIPTION	QTY.
1	716-015W	STAND ASSEMBLY FOR KS390 AND KS490	1
2	572-004	TILT BRACKET FOR KS390 AND KS490 SANDERS	1
3	HHC5037016	3/8-16 X 1 HHCS GR5 Z	5
4	SLWZ037	3/8 SPLIT L/W Z	13
5	291-016	MAIN FRAME FOR KS390 AND KS490	1
6	HHC5037020	3/8-16 X 1-1/4 HHCS GR5 Z	8
7	FHN5037	3/8-16 FHN GR5 Z	4
8	486-003	2HP, 1PH, 3450 RPM, 145TC W/O FEET, 115/230 FOR KS390-490	1
9	291-018	CAST IRON FRAME FOR S460 DRY SANDERS	1
10	HHC5031020	5/16-18 X 1-1/4 HHCS GR 5 Z	5
11	SLWZ031	5/16 SPLIT L/W Z	8
12	960-012	YOKE AND TENSION SHAFT ASSEMBLY FOR KS390 AND KS490	1
13	ROLA025024	1/4 X 1-1/2 ROLL PIN	1
14	697-024	S6 BELT TENSION SPRING	1
15	455-003	TENSION RELEASE LEVER FOR S6 SANDER HEADS	1
16	HHT5031032	5/16-18x2 HEX HEAD TAP BOLT GR5 ZINC	1
17	UFWZ031	5/16 USS F/W Z	9
18	BWVA031	5/16 BOWED SPRING WASHER 21/64	1
19	STNZ031	5/16-18 STOVER LOCK NUT ZINC-WAX	1
20	936-010	WHEEL CONTACT FOR KS490 SANDER WITH 1" BORE W/BEARINGS	1
21	701-032	SPINDLE, IDLER FOR KS390 AND KS490 SANDERS	1
22	699-034	SPACER, IDLER WHEEL FOR KS390 AND KS490	1
23	123-016	S6 IDLER PULLEY LOCK COLLAR	1
24	SSKA031006	5/16-18 X 3/8 SOC SET KNURL PT.	1
25	SSKA025004	1/4-20 X 1/4 SOC SET KNURL PT.	1
26	560-042	DRIVE PULLEY WITH P2X7/8 BUSHING FOR KS390 AND KS490	1
27	049-063	P2 X 7/8 SPLIT TAPER BUSHING FOR KS390 AND KS490 DRIVE WHEEL	1
28	563-009	PLATEN FOR KS390 AND KS490	1
29	041-029	PLATEN SUPPORT BRACKET FOR KS390 AND KS490 SANDERS	2
30	HHC5031016	5/16-18 X 1 HHCS GR5 Z	4
31	FSCA031016	5/16-18 X 1 FSHCS	2
32	291-016BACKPANEL	KS390 AND KS490 MAIN FRAME REAR GUARD PANEL	1
33	291-016TOPBACK	KS390 AND KS490 MAIN FRAME TOP REAR GUARD	1
34	BSCA025008	1/4-20 X 1/2 BSHCS	11
35	291-016DOOR	KS390 AND KS490 MAIN FRAME DOOR	1
36	829-025A	KS390 AND KS490 PLATEN TOP GUARD COVER	1
37	829-025	TABLE, GUARD FOR KS390 AND KS490 SANDERS	1
38	053-009	TRACKING BLOCK- 5/16 THREADED HOLE	1
39	053-009B	TRACKING BLOCK- 1/2-13 THREADED HOLE	1
40	SHCA025012	1/4-20 X 3/4 SHCS	4
41	FHN5031	5/16-18 FHN GR5 ZINC	1
42	SPPA050020	1/2-13 X 1-1/4 SPRING PLUNGER W BROWN DELRIN NOSE ALLOY	1
43	FJNZ050	1/2-13 F H JAM NUT Z	1
44	709-012	STUD, LEVELING FOR KS390 AND KS490 SANDERS	1
45	FHN5075	3/4-10 FHN GR5 Z	1
46	829-026	TABLE, WORK FOR KS390 AND KS490 SANDERS	1
47	HHC5025012	1/4-20 X 3/4 HHCS GR5 Z	2
48	SLWZ025	1/4 SPLIT L/W Z	4
49	UFWZ025	1/4 USS F/W Z	2
50	168-004	VACUUM PORT FOR KS 390 AND KS490 SANDERS	1
51	HHC5025008	1/4-20 X 1/2 HHCS GR5 Z	2
52	455-014	ARM FOR KS390, KS490 WORK TABLE	1
53	UFWZ037	3/8 USS F/W Z	1

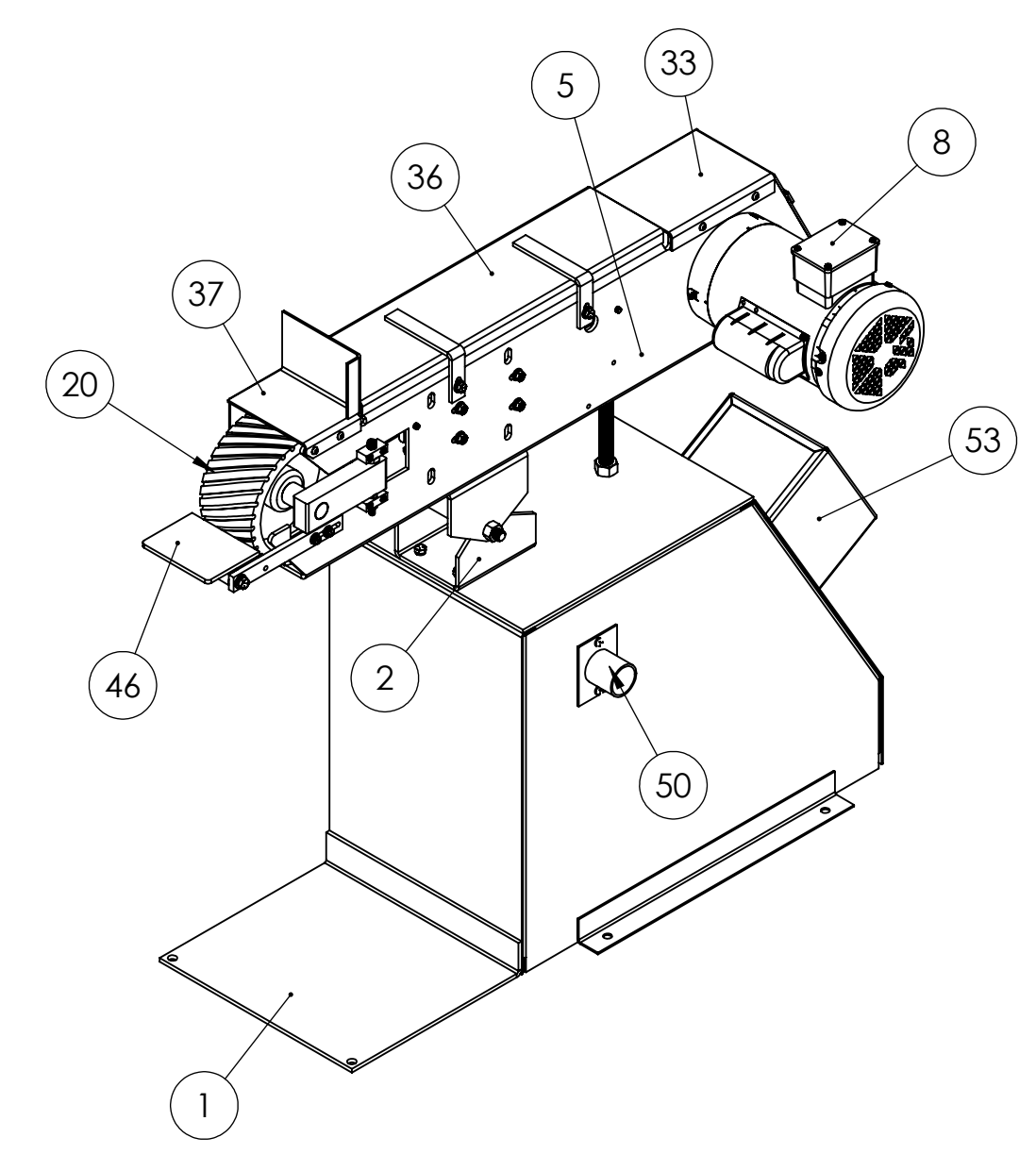
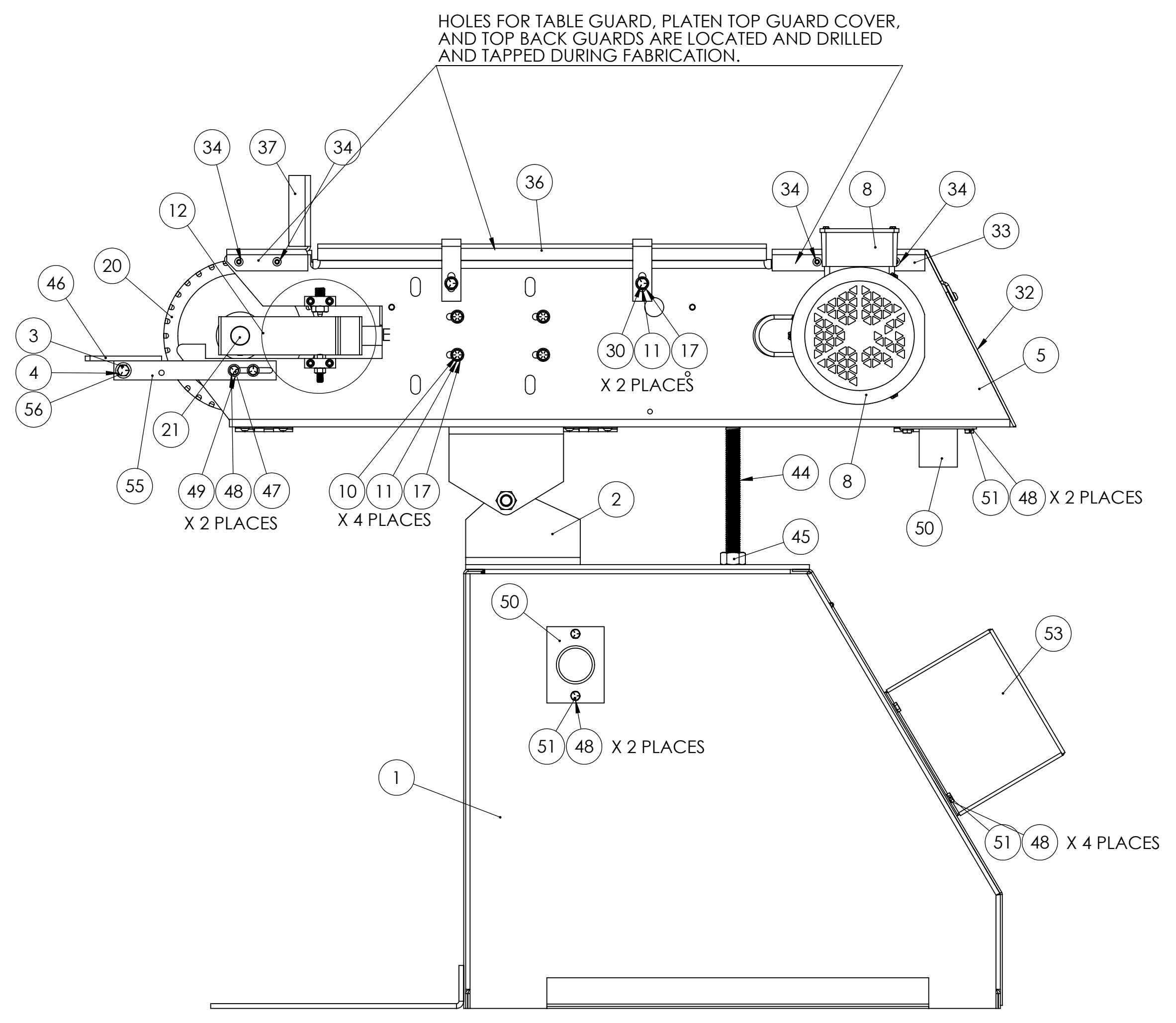
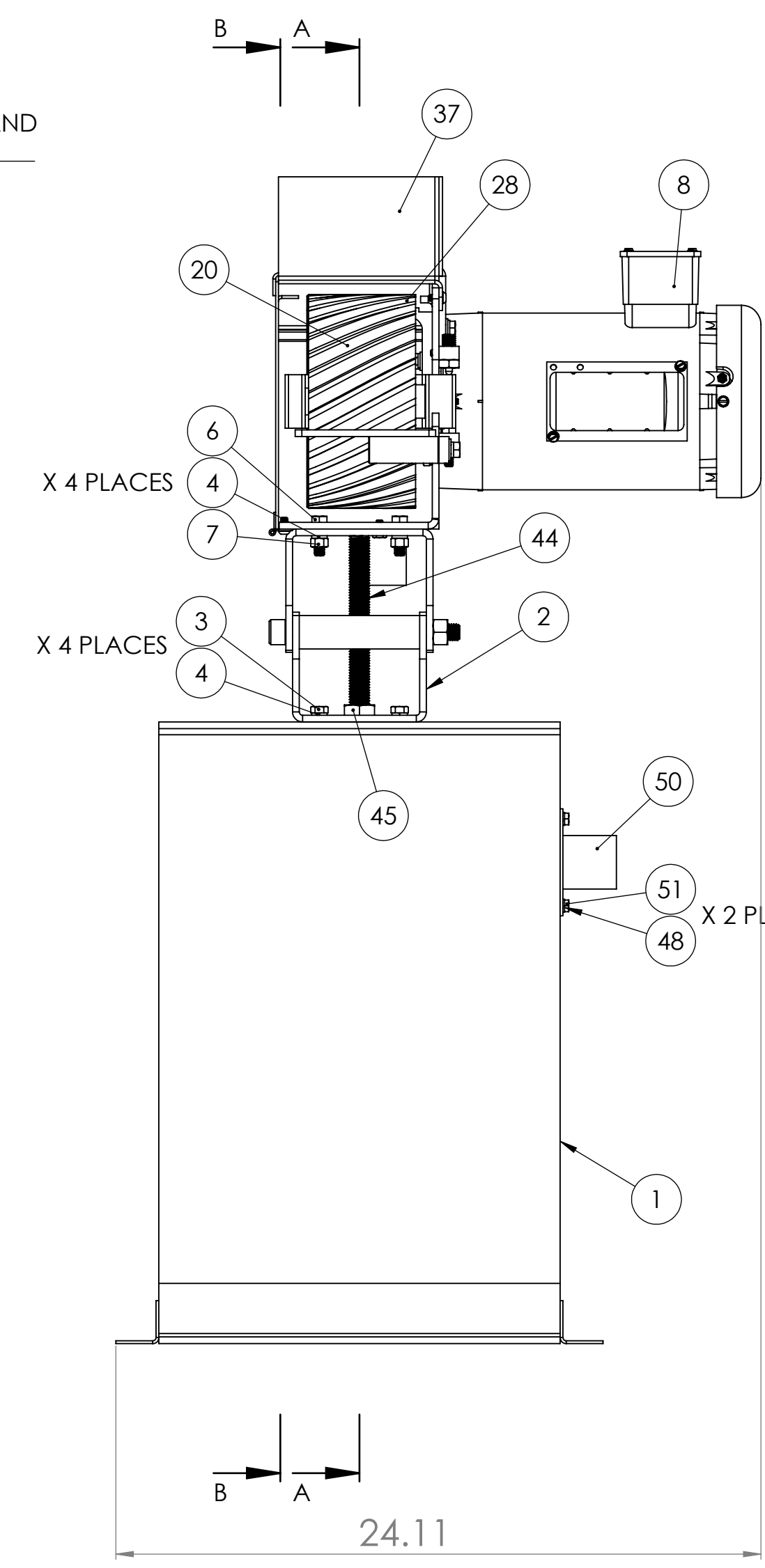
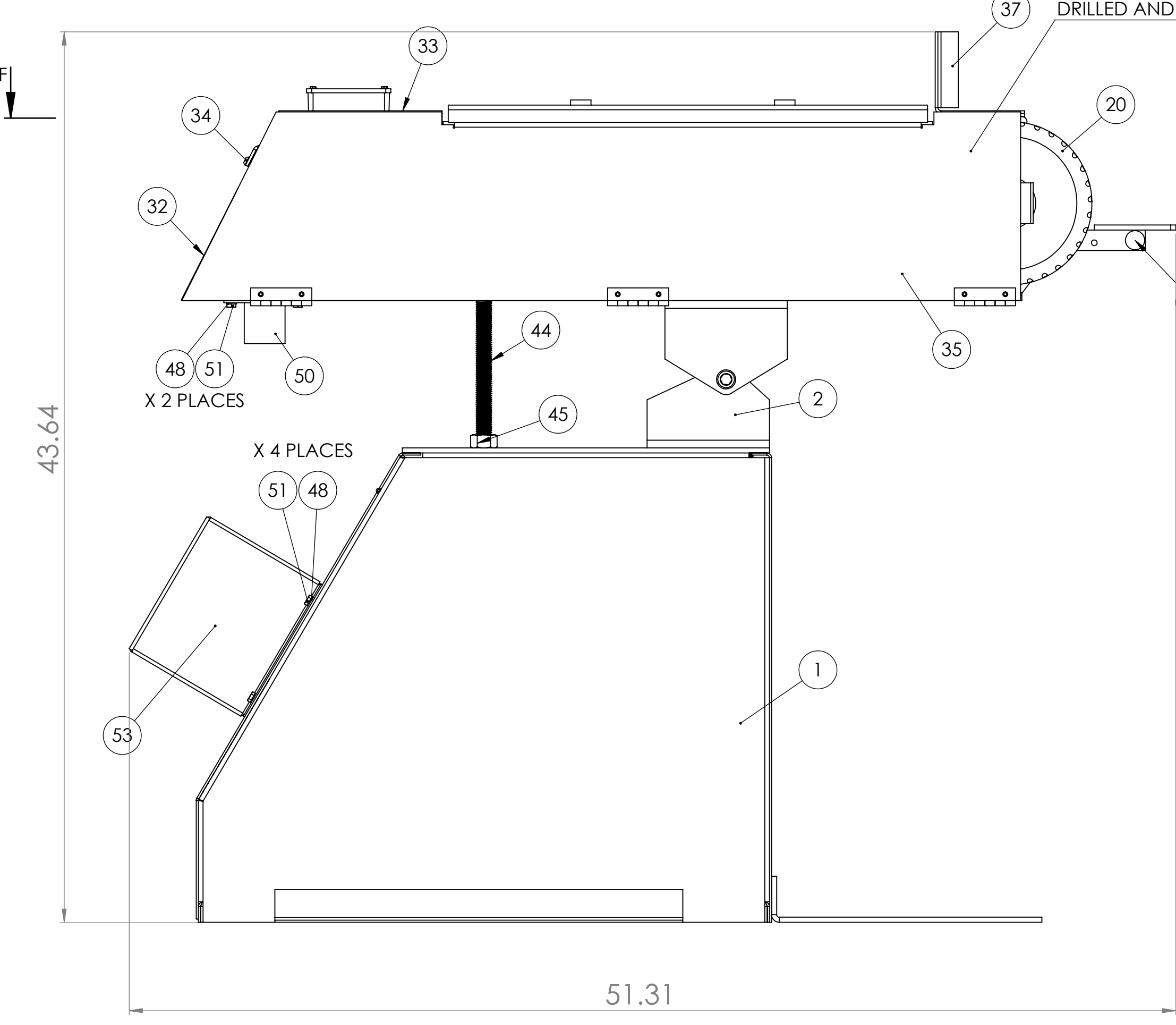
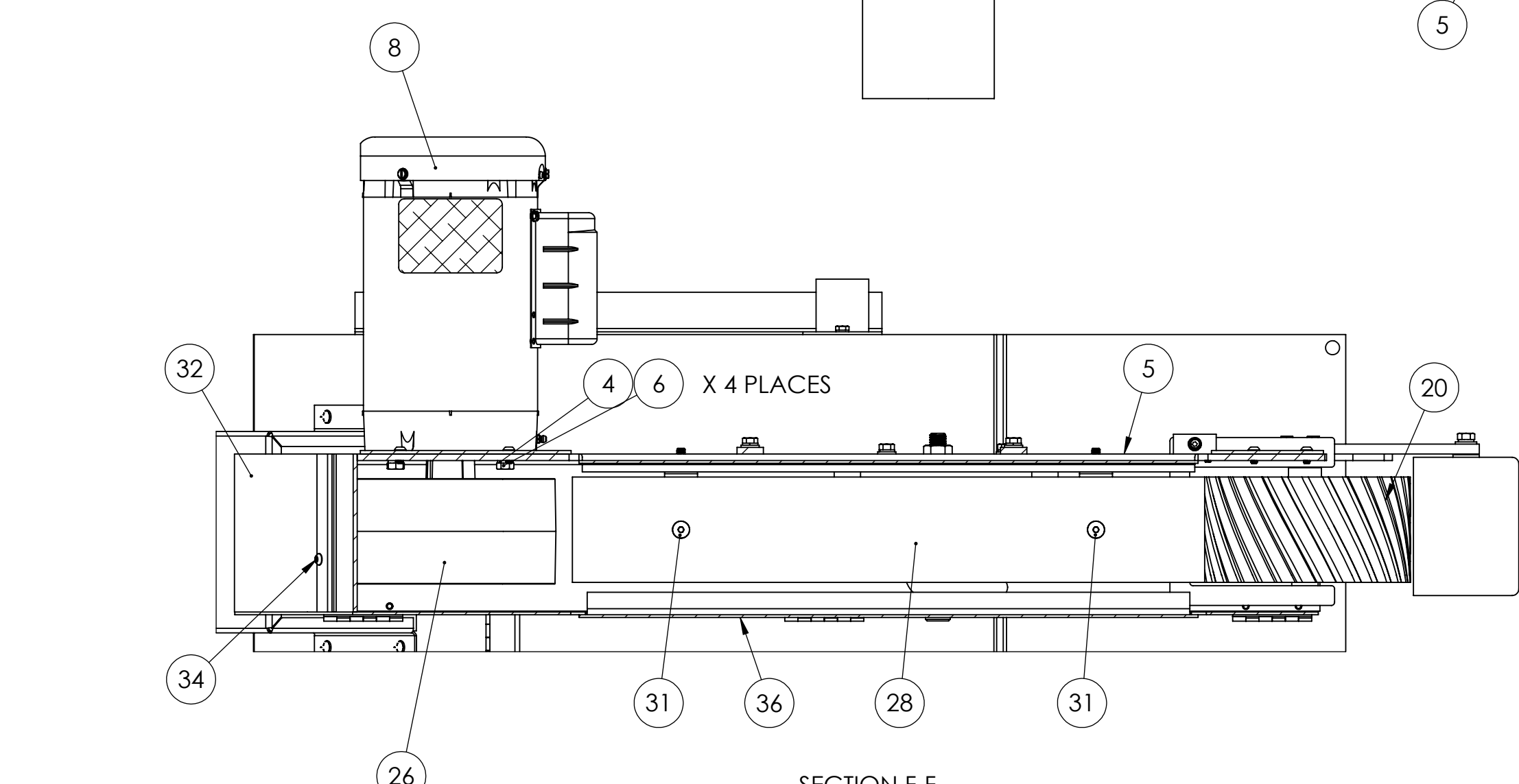
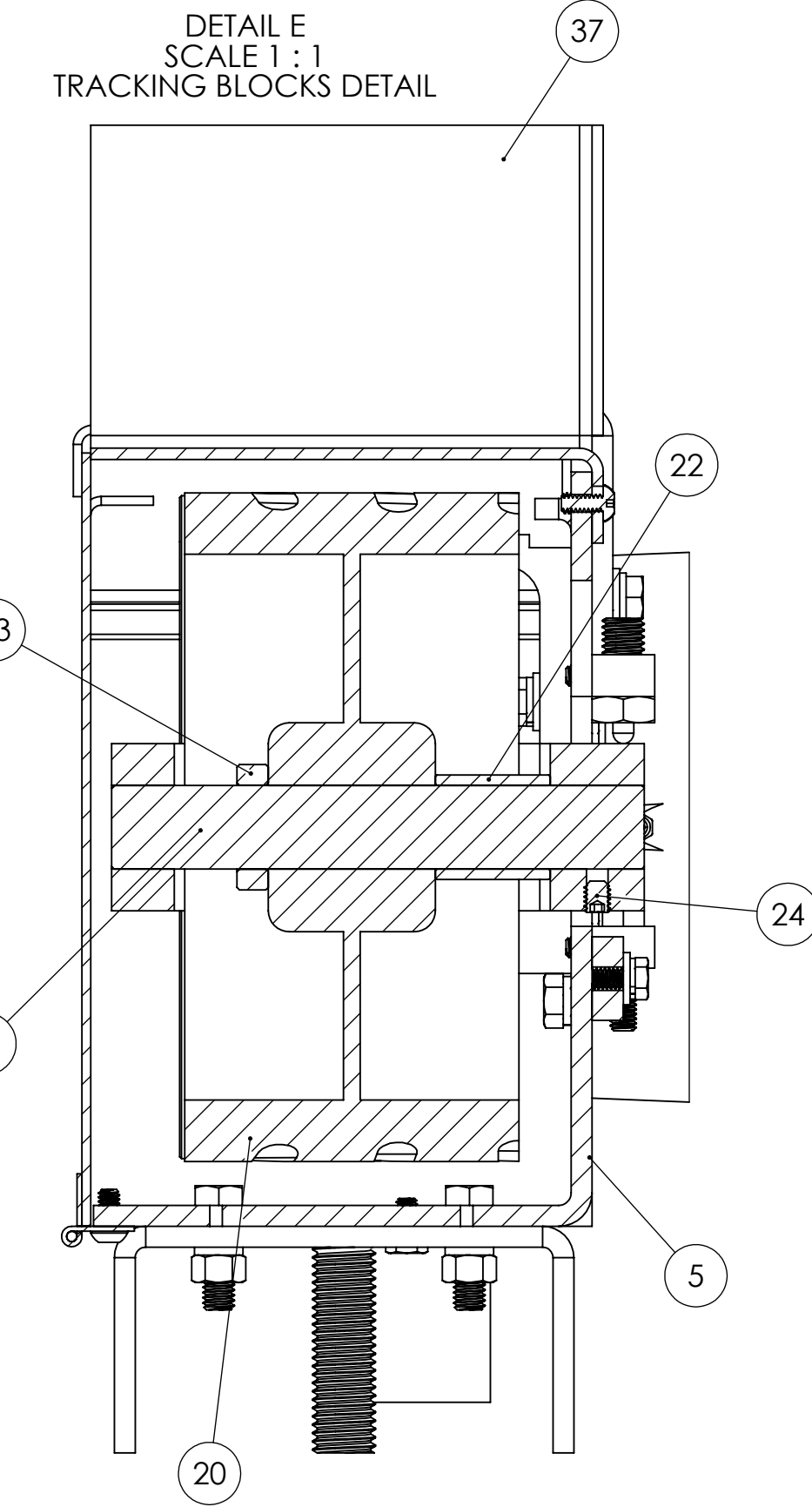
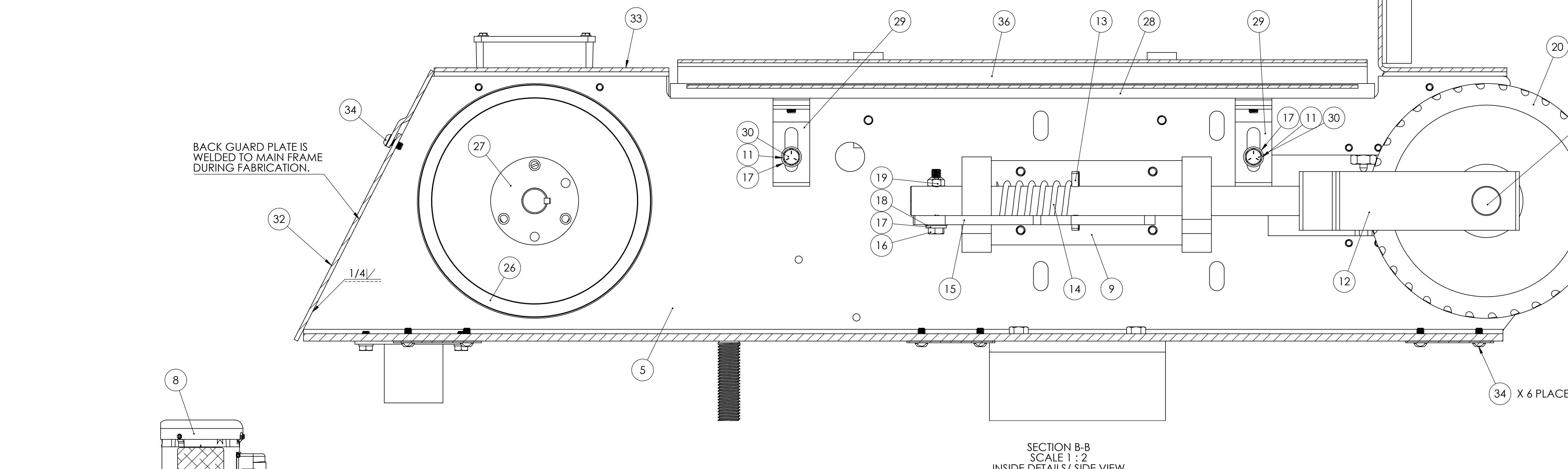
UNLESS OTHERWISE SPECIFIED:
 DIMENSIONS ARE IN INCHES
 TOLERANCES:
 FRACTIONS ± .005
 ANGULAR ± .0315
 HOLE POSITION ± .005
 HOLE SIZE ± .0004
 HOLE POSITION ± .005
 HOLE SIZE ± .0004
 HOLE POSITION ± .005
 HOLE SIZE ± .0004

PROPERTY AND CONFIDENTIAL
 THE INFORMATION CONTAINED IN THIS DRAWING IS THE SOLE PROPERTY OF KALAMAZOO. IT IS TO BE USED FOR THE MANUFACTURE OF THE PRODUCT DESCRIBED HEREIN AND IS NOT TO BE REPRODUCED OR TRANSMITTED IN ANY FORM OR BY ANY MEANS, ELECTRONIC OR MECHANICAL, INCLUDING PHOTOCOPYING, RECORDING, OR BY ANY INFORMATION STORAGE AND RETRIEVAL SYSTEM, WITHOUT THE WRITTEN PERMISSION OF KALAMAZOO. KALAMAZOO SHALL NOT BE LIABLE FOR ANY DAMAGES OR LOSSES, INCLUDING CONSEQUENTIAL DAMAGES, ARISING FROM THE USE OF THIS DRAWING.

DATE: _____
 DRAWN BY: _____
 CHECKED BY: _____
 TITLE: **KS490 BELT GRINDER**
 SIZE: DWG. NO. **E** KS490
 SCALE: 1:5 WEIGHT: _____ SHEET 1 OF 1



ITEM NO.	PART NUMBER	DESCRIPTION	QTY.
1	716-016W	STAND, VACUUM ASSEMBLY FOR K3390 AND K5490	1
2	572-004	TILT BRACKET FOR K3390 AND K5490 SANDERS	1
3	HHC5037016	3/8-16 X 1 HHCS GR5 Z	5
4	SLW2037	3/8 SPLIT L/W Z	13
5	291-016	MAIN FRAME FOR K3390 AND K5490	1
6	HHC5037020	3/8-16 X 1-1/4 HHCS GR5 Z	8
7	FHN5037	3/8-16 FHN GR5 Z	4
8	486-003	2HP MOTOR FOR K3390-490	1
9	291-018	CAST IRON FRAME FOR S460 DRY SANDERS	1
10	HHC5031020	5/16-18 X 1-1/4 HHCS GR 5 Z	5
11	SLW2031	5/16 SPLIT L/W Z	8
12	960-012	YOKE AND TENSION SHAFT ASSEMBLY FOR K3390 AND K5490	1
13	ROLA025024	1/4 X 1-1/2 ROLL PIN	1
14	697-024	S6 BELT TENSION SPRING	1
15	455-003	TENSION RELEASE LEVER FOR S6 SANDER HEADS	1
16	HHT5031032	5/16-18x2 HEX HEAD TAP BOLT GR5 ZINC	1
17	UFW2031	5/16 USS F/W Z	9
18	BWWA031	5/16 BOWED SPRING WASHER 21/64	1
19	STNZ031	5/16-18 STOVER LOCK NUT ZINC-WAX	1
20	936-010	WHEEL CONTACT FOR K5490 SANDER WITH 1" BORE W/BEARINGS	1
21	701-032	SPINDLE, IDLER FOR K3390 AND K5490 SANDERS	1
22	699-034	SPACER, IDLER WHEEL FOR K3390 AND K5490	1
23	123-016	S6 IDLER PULLEY LOCK COLLAR	1
24	SSKA031006	5/16-18 X 3/8 SOC SET KNURL PT.	1
25	SSKA025004	1/4-20 X 1/4 SOC SET KNURL PT.	1
26	560-042	DRIVE PULLEY WITH P2X7/8 BUSHING FOR K3390 AND K5490	1
27	049-063	BUSHING FOR K3390 & K5490 DRIVE WHEEL	1
28	563-009	PLATEN FOR K3390 AND K5490 SERIES	1
29	041-029	PLATEN SUPPORT BRACKET FOR K3390 AND K5490 SANDERS	2
30	HHC5031016	5/16-18 X 1 HHCS GR5 Z	4
31	FSCA031016	5/16-18 X 1 FSHCS	2
32	291-016BACKPANEL	K3390 AND K5490 MAIN FRAME REAR GUARD PANEL	1
33	291-016TOPBACK	K3390 AND K5490 MAIN FRAME TOP REAR GUARD	1
34	BSCA025008	1/4-20 X 1/2 BSHCS	11
35	291-016DOOR	K3390 AND K5490 MAIN FRAME DOOR	1
36	829-025A	K3390 AND K5490 PLATEN TOP GUARD COVER	1
37	829-025	TABLE, GUARD FOR K3390 AND K5490 SANDERS	1
38	053-009	TRACKING BLOCK- 5/16 THREADED HOLE	1
39	053-009B	TRACKING BLOCK- 1/2-13 THREADED HOLE	1
40	SHCA025012	1/4-20 X 3/4 SHCS	4
41	FHN5031	5/16-18 FHN GR5 ZINC	1
42	SPPA050020	1/2-13 X 1-1/4 SPRING PLUNGER W BROWN DELRIN NOSE ALLOY	1
43	FJNZ050	1/2-13 F H JAM NUT Z	1
44	709-012	STUD, LEVELING FOR K3390 AND K5490 SANDERS	1
45	FHN5075	3/4-10 FHN GR5 Z	1
46	829-026	TABLE, WORK FOR K3390 AND K5490 SANDERS	1
47	HHC5025012	1/4-20 X 3/4 HHCS GR5 Z	2
48	SLW2025	1/4 SPLIT L/W Z	10
49	UFW2025	1/4 USS F/W Z	2
50	168-004	VACUUM PORT FOR K3390 AND K5490 SANDERS	2
51	HHC5025008	1/4-20 X 1/2 HHCS GR5 Z	8
52	486-008	VACUUM MOTOR FOR K3390V AND S612V (OLD STYLE)	1
53	342-037	GUARD, VACUUM MOTOR FOR K3390 SANDERS	1
54	5X878	CLOTH BAG FOR DCV-4 DUST COLLECTOR	1
55	455-014	ARM FOR K3390, K5490 WORK TABLE	1
56	UFW2037	3/8 USS F/W Z	1



UNLESS OTHERWISE SPECIFIED:	NAME	DATE
DIMENSIONS ARE IN INCHES	DESIGNED BY	
TOLERANCES:	CHECKED BY	
FRACTIONS: 1/16, 1/8, 1/4, 3/8, 1/2	ENG APPR	
DECIMALS: .1, .2, .5, 1, 2, 3, 4, 5, 6, 7, 8, 9, 10, 15, 20, 30, 40, 50, 60, 70, 80, 90, 100	MFG APPR	
THREE PLACE DECIMAL: .001, .002, .003, .004, .005, .006, .007, .008, .009, .010, .015, .020, .030, .040, .050, .060, .070, .080, .090, .100	D.A.	
INTERFERENCE GEOMETRIC TOLERANCES PER	COMMENTS:	
ASME Y14.5		
NEET APPR	USED ON	FINISH
APPLICATION	DO NOT SCALE DRAWING	

KALAMAZOO
 TITLE: **KS490 BELT GRINDER W VACUUM IN BASE**
 SIZE: DWG. NO. **E KS490V** REV
 SCALE: 1:5 WEIGHT: SHEET 1 OF 1