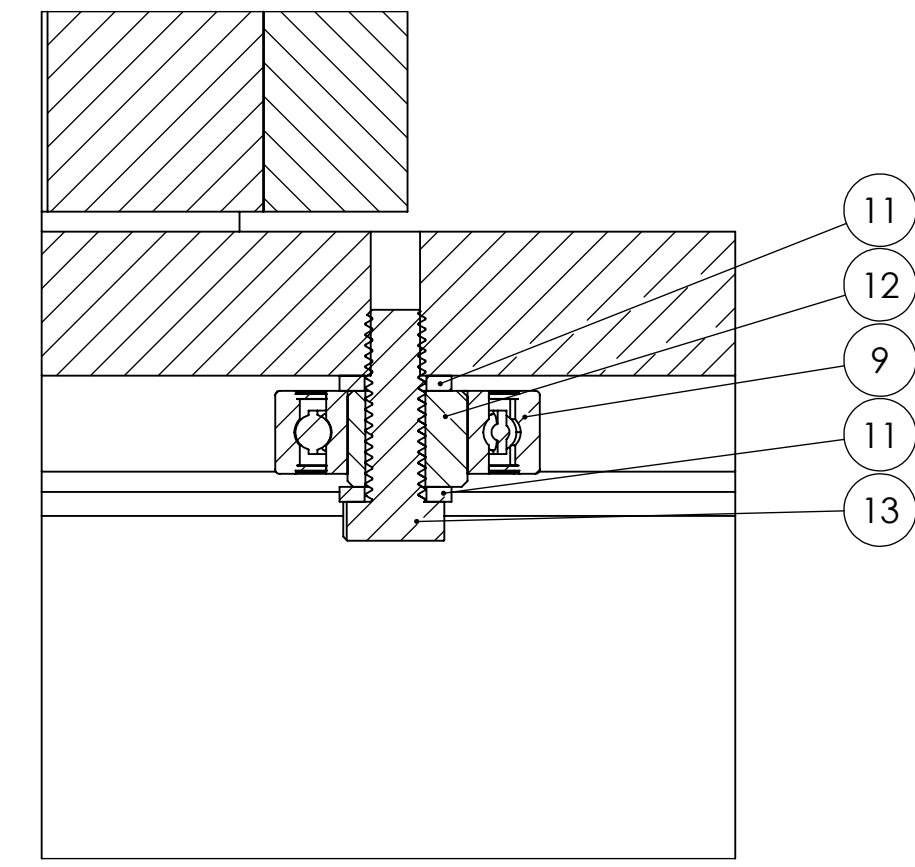
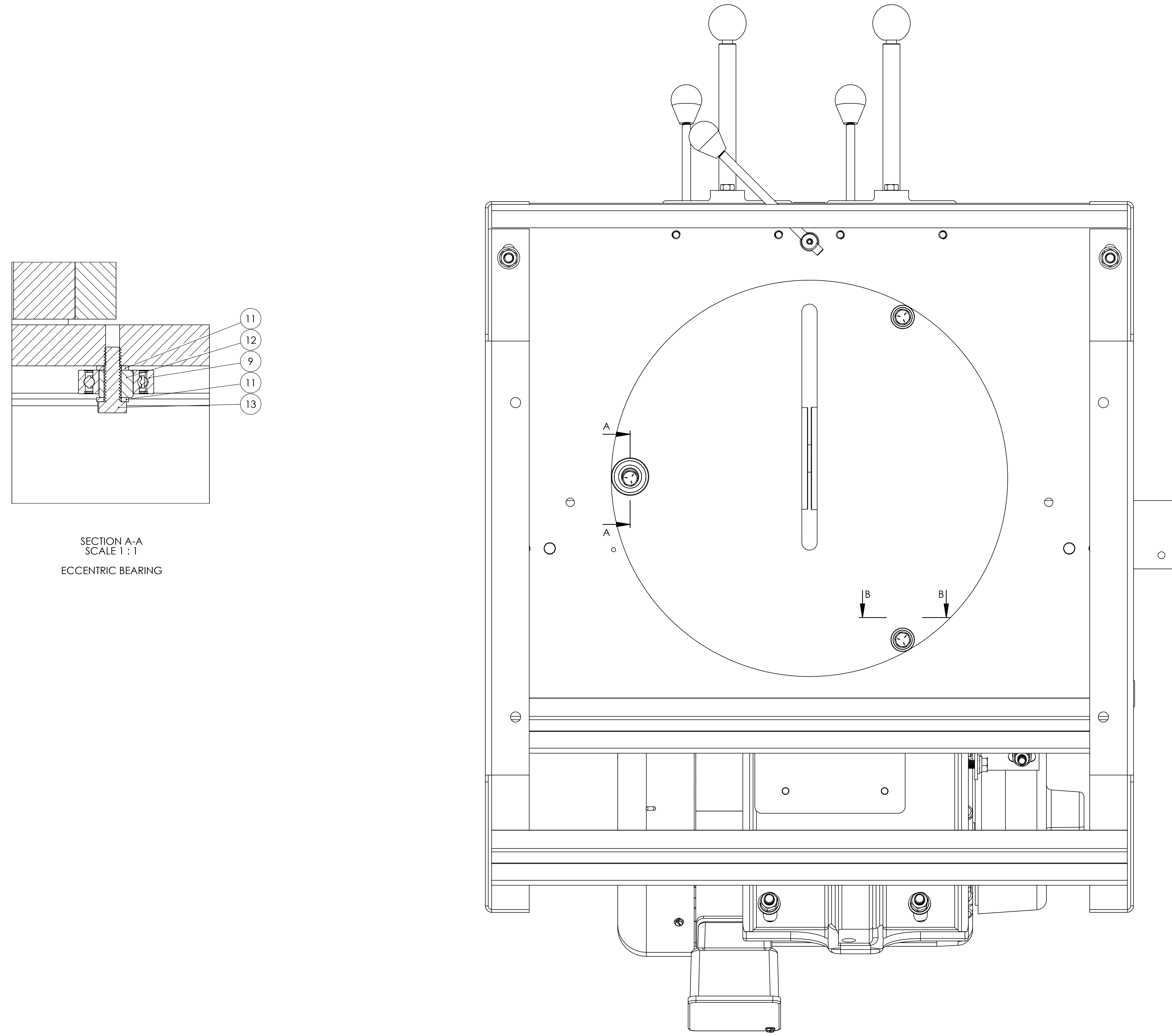
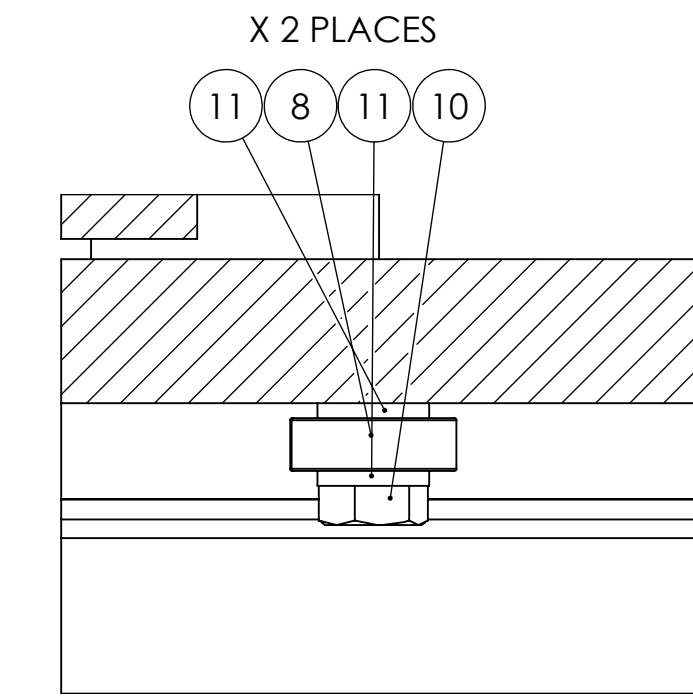


ITEM NO.	PART NUMBER	DESCRIPTION	QTY.
1	716-001	STAND FOR KM14	1
2	556-008	PLATE, SQUARE FOR KM10-14	1
3	FSCA037020	3/8-16 X 1-1/4 FSHCS	4
4	FHN5037	3/8-16 FHN GR5 Z	8
5	UFW2037	3/8 USS F/W Z	8
6	SLW2037	3/8 SPLIT L/W Z	8
7	556-084	PLATE, MITRE (ROUND TOP) FOR KM14HS	1
8	044-006	TABLE BEARING (38X01) FOR KM10, KM14 MITRE SAWS	2
9	044-007	K10 BEARING	1
10	HHC5031012	5/16-18 X 3/4 HHC5 GR5 Z	3
11	SLW2031	5/16 SPLIT L/W Z	20
12	049-001	ECCENTRIC BUSHING FOR KM10 AND KM14 MITRE TOP	1
13	HHC5031016	5/16-18 X 1 HHC5 GR5 Z	1
14	454-004	LOCK, TABLE MITRE FOR KM10, KM14	1
15	699-006	SPACER, VISE FOR KM14HS SERIES SAWS	1
16	696-013	SCREW, TABLE LOCK FOR KM14 MITRE SAW (5 LONG)	1
17	441-002	K10-16 VISE LOCK HANDLE KNOB	1
18	381-012	HANDLE, TABLE LOCK FOR KM14	1
19	RUD2007008	#7 X 1/2 RD U-DRIVE SCREW Z	1
20	RHRA012008	1/8 ROUND HEAD RIVET	2
21	SSSA025006	1/4-20 X 3/8 SOC SET CUP PT	1
22	FHN5062	5/8-11 FHN GR5 Z	2
23	CPNZ062	5/8-11 CAP NUT Z	1
24	431-001	FRONT VISE JAW K10, K14, KM14	2
25	562-001	VISE JAW PIN FOR K10B, K12B, K14B, KM16-18 VISE ASSEMBLIES	2
26	FHN5025	1/4-20 FHN GR5 Z	3
27	SHCA031032	5/16-18 X 2 SHCS	4
28	562-039	PIN, TRUNNION FOR KM14SC AND KM14HS	1
29	347-003	HANDLE GRIP FOR K12 THRU K26 SAWS	1
30	562-020	TABLE INDEX PIN FOR KM14	1
31	831-022	TRUNNION ASSEMBLY FOR HSM14, HS14, K12-14MS	1
32	ZERK012000	1/8-27 X 1 1/16 STRT LUBE FITTING	1
33	HHC5031024	5/16-18 X 1-1/2 HHC5 GR5 Z	4
34	002-002	K12- 14 SAW ARM	1
35	SSKA031006	5/16-18 X 3/8 SOC SET KNURL PT.	1
36	044-001	K12 BEARING	2
37	701-002HS	SPINDLE W TIGHT FLANGE (STEEL) FOR KM14HS, KM14SC, HSM14, HS14	1
38	292-020	LOOSE FLANGE (STEEL) FOR HSM14 L.H. SPINDLE NUT 1"-14 FOR K14, KM14	1
39	537-026	5 HP MOTOR FOR K12B, K14B, KM14, KM14HS & 36MS-SHP	1
40	486-001	3/8-16 X 1-1/4 HHC5 GR5 Z	4
41	HHC5037020	K12- 14 SPINDLE PULLEY	1
42	560-001	1/4-20 X 1/4 SOC SET KNURL PT.	3
43	SSKA025004	MOTOR PULLEY BUSHING FOR K12B, K14B AND KM14	1
44	049-022	MOTOR PULLEY SHEAVE FOR K12-14B, K12-14W, K12-14MS AND KM14	1
45	560-002	3V375 V-BELT (2 REQUIRED) FOR K12, K14, KM14 SAWS	2
46	051-006HS14	K12-14 INNER BELT GUARD FOR PLASTIC GUARD	1
47	342-086	3-3/4 INCHES OF 5/16-18 THREADED ROD	1
48	RND-0-31-18THRD3.75	5/16 USS F/W Z	6
49	UFW2031	5/16-18 FHN GR5 ZINC	4
50	FHN5031	5/16-18 CAP NUT NICKEL	1
51	CPNZ031	K12-14 OUTER BELT GUARD/PLASTIC	1
52	342-004	5/16-18 X 1-1/4 HHC5 GR 5 Z	1
53	HHC5031020	WHEEL GUARD ASSEMBLY FOR HSM14 AND HS 14	1
54	342-072	1/4-20 X 1/2 HHC5 GR5 Z	3
55	HHC5025008	5/8 X 2-3/4 SOC SHOULDER BOLT	1
56	SSBA062044	SPACER, LEVER FOR HSM14	2
57	699-032	LEVER ASSEMBLY, WHEEL GUARD FOR HSM14	1
58	455-007	5/16-18 X 2 HHC5 GR5 Z	2
59	HHC5031032	TENSION BRACKET FOR HSM14	1
60	455-007BRACKET	WHEEL GUARD LEVER ASSEMBLY	1
61	BSCA025012	1/4-20 X 3/4 BSHCS	1
62	SLW2025	1/4 SPLIT L/W Z	5
63	455-007ROD	GUIDE ROD FOR K10 AND K14 SERIES CLAMHELL WHEEL GUARD LEVER ASSEMBLY	1
64	ROLA012008	1/8 X 1/2 ROLL PIN	1
65	053-047	BLOCK, WHEEL GUARD FOR K10 AND K14 SERIES CLAMHELL GUARD	1
66	SHCA025016	1/4-20 X 1 SHCS	1
67	441-015	907B-2500-1.005 1/4 THUMBSCREW 1-1/2 DIA	1
68	RND-0-625-11THRDRODX3	3 INCHES OF 5/8-11 THREADED ROD	1
69	041-118	DOWN STOP BRACKET ASSEMBLY, FOR HS14	1
70	HHC5025012	1/4-20 X 3/4 HHC5 GR5 Z	2
71	FJNZ042	5/8-11 F H JAM NUT Z	1
72	RND-0-625-11THRDRODX4.5	4-1/2 INCHES OF 5/8-11 THREADED ROD	1
73	381-002	HANDLE W GRIP FOR K12-14 SAWS	1
74	699-017	FENCE SPACER (RISER) FOR KM10, KM10HS, KM14, KM14HS 2 REQUIRED PER MACHINE	2
75	699-030	SPACER, (LEFT SIDE) FENCE FOR HSM14	1
76	699-031	SPACER, (RIGHT SIDE) FENCE FOR HSM14	1
77	293-017	FENCE FOR HSM14	1
78	ROLA031032	5/16 X 2 ROLL PIN	2
79	SHCA050040	1/2-13 X 2-1/2 SHCS	2
80	SLW2050	1/2 SPLIT L/W Z	2
81	556-046	PLATE, FENCE (JAW) FOR HSM14	2
82	SHCA031024	5/16-18 X 1-1/2 SHCS	4
83	041-057	SWITCH BRACKET FOR K12-K14	1
84	342-086BRKT	K12-14 INNER BELT GUARD BRACKET	1
85	912-016	VISE ASSEMBLY K12-14W, KM10, KM14	2

FOR MITRE TABLE BEARINGS



SECTION A-A
SCALE 1 : 1
ECCENTRIC BEARING



SECTION B-B
SCALE 1 : 1
BOTH CONCENTRIC BEARINGS

ITEM NO.	PART NUMBER	DESCRIPTION	QTY.
1	714-001	STAND FOR KM14	1
2	556-008	PLATE, SQUARE FOR KM10-14	1
3	FSCA037020	3/8-16 X 1-1/4 FSHCS	4
4	FHN5037	3/8-16 FHN GR5 Z	8
5	UFWZ037	3/8 USS F/W Z	8
6	SLWZ037	3/8 SPLIT L/W Z	8
7	556-084	PLATE, MITRE (ROUND TOP) FOR KM14HS	1
8	044-006	TABLE BEARING (38KDT) FOR KM10, KM14 MITRE SAWS	2
9	044-007	K10 BEARING	1
10	HHC5031012	5/16-18 X 3/4 HHCS GR5 Z	3
11	SLWZ031	5/16 SPLIT L/W Z	20
12	049-001	ECCENTRIC BUSHING FOR KM10 AND KM14 MITRE TOP	1
13	HHC5031016	5/16-18 X 1 HHCS GR5 Z	1
14	454-004	LOCK, TABLE MITRE FOR KM10, KM14	1
15	699-006	SPACER, VISE FOR KM14HS SERIES SAWS	1
16	696-013	SCREW, TABLE LOCK FOR KM14 MITRE SAW (5 LONG)	1
17	441-002	K10-16 VISE LOCK HANDLE KNOB	1
18	381-012	HANDLE, TABLE LOCK FOR KM14	1
19	RUDZ007008	#7 X 1/2 RD U-DRIVE SCREW Z	1
20	RHRA012008	1/8 ROUND HEAD RIVET	2
21	SSSA025006	1/4-20 X 3/8 SOC SET CUP PT	1
22	FHN5062	5/8-11 FHN GR5 Z	2
23	CPNZ062	5/8-11 CAP NUT Z	1
24	431-001	FRONT VISE JAW K10, K14, KM14	2
25	562-001	VISE JAW PIN FOR K10B, K12B, K14B, KM16-18 VISE ASSEMBLIES	2
26	FHN5025	1/4-20 FHN GR5 Z	3
27	SHCA031032	5/16-18 X 2 SHCS	20
28	562-039	PIN, TRUNNION FOR KM14SC AND KM14HS	1
29	347-003	HANDLE GRIP FOR K12 THRU K26 SAWS	1
30	562-020	TABLE INDEX PIN FOR KM14	1
31	831-022	TRUNNION ASSEMBLY FOR HSM14, HS14, K12-14MS	1
32	ZERKO12000	1/8-27 X 1 1/16 STRT LUBE FITTING	1
33	HHC5031024	5/16-18 X 1-1/2 HHCS GR5 Z	4
34	002-002	K12- 14 SAW ARM	1
35	SSKA031006	5/16-18 X 3/8 SOC SET KNURL PT.	1
36	044-001	K12 BEARING	2
37	701-002HS	SPINDLE W/ RIGHT FLANGE (STEEL) FOR KM14HS, KM14SC, HSM14, HS14	1
38	292-020	LOOSE FLANGE (STEEL) FOR HSM14	1
39	537-026	L.H. SPINDLE NUT 1"-14 FOR K14, KM14	1
40	486-001	5 HP MOTOR FOR K12B, K14B, KM14, KM14HS & 5&MS-SHP	1
41	HHC5037020	3/8-16 X 1-1/4 HHCS GR5 Z	4
42	560-001	K12- 14 SPINDLE PULLEY	1
43	SSKA025004	1/4-20 X 1/4 SOC SET KNURL PT.	3
44	049-022	MOTOR PULLEY BUSHING FOR K12B, K14B AND KM14	1
45	560-002	MOTOR PULLEY SHEAVE FOR K12-14B, K12-14W, K12-14MS AND KM14	1
46	051-006HS14	3V375 V-BELT (2 REQUIRED) FOR K12, K14, KM14 SAWS	2
47	342-086	K12-14 INNER BELT GUARD FOR PLASTIC GUARD	1
48	342-086BRKT	K12-14 INNER BELT GUARD BRACKET	1
49	RND-0.31-18THRD X 3.75	3-3/4 INCHES OF 5/16-18 THREADED ROD	1
50	UFWZ031	5/16 USS F/W Z	6
51	FHN5031	5/16-18 FHN GR5 ZINC	4
52	CPNZ031	5/16-18 CAP NUT NICKEL	1
53	342-004	K12-14 OUTER BELT GUARD/PLASTIC	1
54	HHC5031020	5/16-18 X 1-1/4 HHCS GR 5 Z	1
55	342-072	WHEEL GUARD ASSEMBLY FOR HSM14 AND HS 14	1
56	HHC5025008	1/4-20 X 1/2 HHCS GR5 Z	3
57	SSBA02044	5/8 X 2-3/4 SOC SHOULDER BOLT	1
58	699-032	SPACER, LEVER FOR HSM14	2
59	455-007	LEVER ASSEMBLY, WHEEL GUARD FOR HSM14	1
60	HHC5031032	5/16-18 X 2 HHCS GR5 Z	2
61	455-007BRACKET	TENSION BRACKET FOR HSM14, WHEEL GUARD LEVER ASSEMBLY	1
62	BSCA025012	1/4-20 X 3/4 BSHCS	1
63	SLWZ025	1/4 SPLIT L/W Z	5
64	455-007ROD	GUIDE ROD FOR K10 AND K14 SERIES CLAMHELL WHEEL GUARD LEVER ASSEMBLY	1
65	ROLA012008	1/8 X 1/2 ROLL PIN	1
66	053-047	BLOCK, WHEEL GUARD FOR K10 AND K14 SERIES CLAMHELL GUARD	1
67	SHCA025016	1/4-20 X 1 SHCS	1
68	441-015	907B-2500-1.005 1/4 THUMBSCREW 1-1/2 DIA	1
69	RND-0.625-11THRDRODX3	3 INCHES OF 5/8-11 THREADED ROD	1
70	041-118	DOWN STOP BRACKET ASSEMBLY, FOR HS14	1
71	HHC5025012	1/4-20 X 3/4 HHCS GR5 Z	2
72	FJNZ062	5/8-11 F H JAM NUT Z	1
73	RND-0.625-11THRDRODX4.5	4-1/2 INCHES OF 5/8-11 THREADED ROD	1
74	381-002	HANDLE W GRIP FOR K12-14 SAWS	1
75	699-017	FENCE SPACER (RISER) FOR KM10, KM10HS, KM14, KM14HS 2 REQUIRED PER MACHINE	2
76	699-030	SPACER, (LEFT SIDE) FENCE FOR HSM14	1
77	699-031	SPACER, (RIGHT SIDE) FENCE FOR HSM14	1
78	293-017	FENCE FOR HSM14	1
79	ROLA031032	5/16 X 2 ROLL PIN	2
80	SHCA050040	1/2-13 X 2-1/2 SHCS	2
81	SLWZ050	1/2 SPLIT L/W Z	2
82	556-046	PLATE, FENCE (JAW) FOR HSM14	2
83	SHCA031024	5/16-18 X 1-1/2 SHCS	4
84	041-057	SWITCH BRACKET FOR K12-K14	1
85	912-016	VISE ASSEMBLY K12-14W, KM10, KM14	2

PROPRIETARY AND CONFIDENTIAL
THIS DRAWING IS THE PROPERTY OF
HILTI. IT IS TO BE USED ONLY FOR THE
PURPOSES SPECIFIED HEREIN. ANY
REPRODUCTION IN PART OR AS A WHOLE
WITHOUT THE WRITTEN PERMISSION OF
HILTI COMPANY IS PROHIBITED.

UNLESS OTHERWISE SPECIFIED:		NAME	DATE
DRAWINGS ARE IN INCHES	DRAWN		
TOLERANCES:	CHECKED		
FRACTIONS TO 1/16	ENG APPR		
ANGULAR DIMS TO 1/4	ENG APPR		
POSITIONAL DECIMAL TO 0.01	ENG APPR		
THREE PLACE DECIMAL TO 0.001	ENG APPR		
INTERFERE GEOMETRIC TOLERANCES PER ASME Y14.5	D.A.		
MAXIMUM SURFACE FINISH	COMMENTS:		
NEATNESS	USED ON		
APPLICATION	DO NOT SCALE DRAWING		

TITLE:
14" HIGH SPEED NON FERROUS MITRE SAW

SIZE: DWG. NO. **E KM14HS** REV
SCALE: 1:10 WEIGHT: SHEET 2 OF 2