



6856 East K Ave - Kalamazoo, MI 49048-6042
www.kalamazooind.com

OPERATING INSTRUCTIONS AND PARTS MANUAL

KM14 14 INCH ABRASIVE MITRE SAW



CONTACT INFORMATION

PHONE: (269) 382-2050
FAX: (269) 382-0790
www.kalamazooind.com

MODEL NUMBER: KM14



MADE IN USA

EQUIPMENT WARRANTY AND RETURN POLICY

WARRANTY

All products are guaranteed for a period of one year from receipt of equipment to the original purchaser, against defects in material or workmanship, under normal use.

ELECTRICAL COMPONENT WARRANTY

All products are guaranteed for a period of one year from receipt of equipment to the original purchaser, against defects in material or workmanship, under normal use.

If equipment is wired incorrectly by the user and is destroyed the warranty for that electrical component is **VOID.**

ELECTRIC MOTOR WARRANTY

Electric motors are warranted by the manufacturer and will be repaired by the nearest repair station or and or replaced. Defective motors are not to be returned to Kalamazoo Industries.

Written authorization must be obtained before returning merchandise.

RETURN POLICY

- Authorization must be obtained before turning merchandise. Please call our Customer Service Department to receive a return authorization number (269) 382-2050. Without that authorization number credit won't be issued.
- Please include with your return a copy of your original purchase invoice and or packing slip and authorization number.
- Materials must be sent back prepaid. Equipment sent back collect will be denied and sent back to shippers location.
- All returns will be subject to a 10% restock fee.
- No return will be accepted after one year of invoice date.

CONTACT INFORMATION

KALAMAZOO INDUSTRIES, INC.

6856 East K Avenue

PHONE: (269) 382-2050

FAX: (269) 382-0790

www.kalamazooind.com



ABRASIVE SAW SAFETY AND OPERATING INSTRUCTIONS

WARNING!

TO REDUCE THE RISK OF FIRE OR SHOCK HAZARD,
DO NOT EXPOSE THIS EQUIPMENT TO RAIN, ANY LIQUID AND OR MOISTURE.
IMPROPER USE MAY CAUSE BREAKAGE AND SERIOUS INJURY

READ AND UNDERSTAND ALL SAFETY PRECAUTIONS AND OPERATING INSTRUCTIONS BEFORE OPERATING UNIT

DO

- DO ALWAYS HANDLE AND STORE WHEELS IN A CAREFUL MANNER.
- DO VISUALLY INSPECT ALL WHEELS BEFORE MOUNTING FOR POSSIBLE DAMAGE.
- DO CHECK MACHINE SPEED AGAINST THE ESTABLISHED MAXIMUM OPERATING SPEED MARKED ON THE WHEEL.
- DO CHECK MOUNTING FLANGES FOR EQUAL AND CORRECT DIAMETER.
- DO USE MOUNTING BLOTTERS WHEN SUPPLIED WITH WHEELS.
- DO ALWAYS USE A SAFETY GUARD COVERING AT LEAST ONE-HALF OF THE ABRASIVE WHEEL.
- DO ALWAYS USE ABRASIVE WHEELS WITH THIS SAW.
- DO ALL NEWLY MOUNTED WHEELS TO RUN AT OPERATING SPEED WITH GUARD IN PLACE, FOR AT LEAST ONE MINUTE BEFORE CUTTING.
- DO TIE BACK LOOSE HAIR.
- DO ALWAYS WEAR SAFETY GLASSES OR SOME TYPE OF EYE PROTECTION WHEN CUTTING.

DON'T

- DON'T USE A CRACKED WHEEL OR ONE THAT HAS BEEN DROPPED OR HAS BECOME DAMAGED.
- DON'T FORCE A WHEEL ONTO THE MACHINE OR ALTER THE SIZE OF THE MOUNTING HOLE. IF WHEEL WON'T FIT THE MACHINE, GET ONE THAT WILL.
- DON'T EVER EXCEED MAXIMUM OPERATING SPEED ESTABLISHED FOR THE WHEEL.
- DON'T USE MOUNTING FLANGES ON WHICH THE BEARING SURFACES ARE NOT CLEAN, FLAT AND FREE OF BURRS.
- DON'T TIGHTEN THE MOUNTING NUT EXCESSIVELY.
- DON'T START THE MACHINE UNTIL THE WHEEL GUARD IS IN PLACE.
- DON'T JAM WORK INTO WHEEL.
- DON'T FORCE CUTTING SO THAT MOTOR SLOWS NOTICEABLY OR WORK GETS HOT.
- DON'T WEAR GLOVES WHEN OPERATING MACHINE.
- DON'T WEAR LOOSE CLOTHING.
- DON'T USE TOOTHED BLADES.

OPERATING INSTRUCTIONS

INSPECT YOUR NEW UNIT CAREFULLY FOR SIGNS OF SHIPPING DAMAGE. IF DAMAGED, PLEASE CONTACT CARRIER AND SUBMIT A CONCEALED DAMAGE REPORT. DO NOT RETURN GOODS TO US WITHOUT OUR RGA NUMBER AND SHIPPING INSTRUCTIONS. SEE SECOND PAGE FOR RETURN POLICY AND WARRANTY.

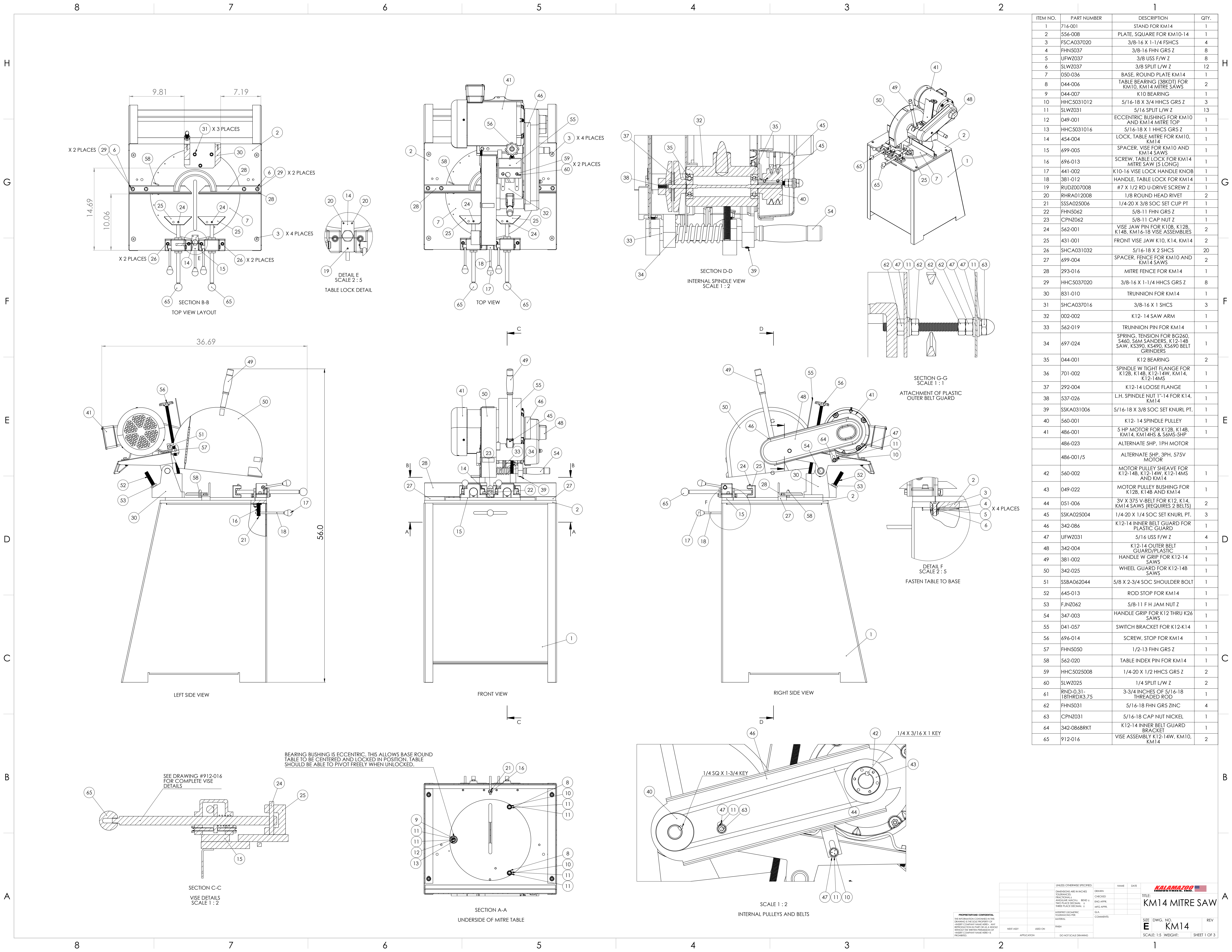
BEFORE STARTING OR CONNECTING ELECTRICAL VERIFY THE PHASE AND VOLTAGE OF THE UNIT.

BE SURE MACHINE IS BALANCED CORRECTLY SO IT WILL NOT TIP OVER.

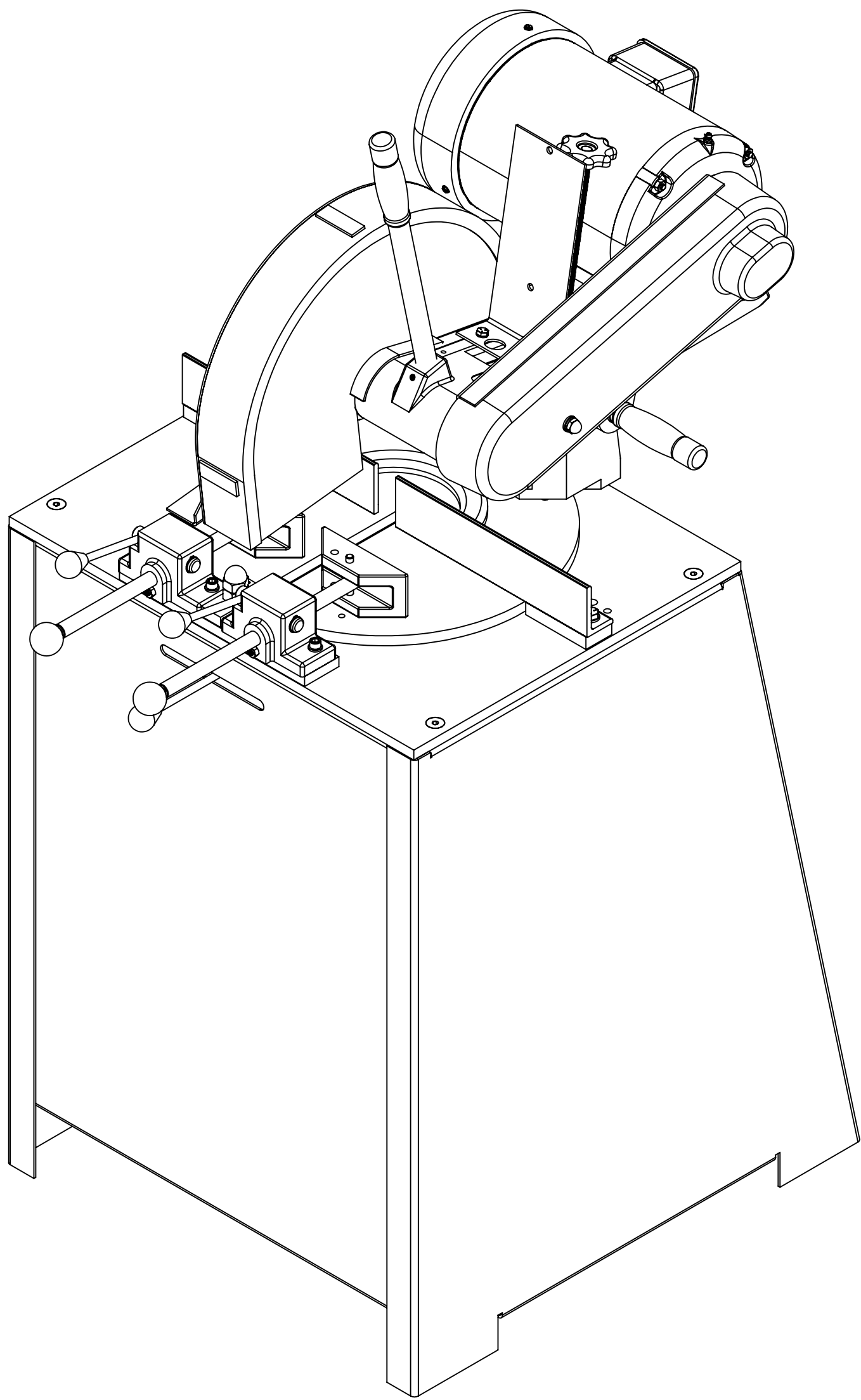
TO GUARD AGAINST CONCEALED DAMAGE, STAND CLEAR AND OBSERVE UNIT FOR THE FIRST FEW MINUTES OF OPERATIONS. **GUARDS MUST NEVER BE REMOVED.**

ABRASIVE SAW SAFETY

- NEVER REMOVE SAFETY GUARDS FROM MACHINE. DISCONNECT POWER SOURCE BEFORE MAKING ANY MACHINE ADJUSTMENTS.
- ELECTRIC MACHINES AREN'T INTENDED FOR USE IN OR NEAR WATER. THIS INCLUDES AN OPERATOR STANDING ON A WET FLOOR.
- DO NOT USE AROUND FLAMMABLE MATERIALS OR LIQUIDS.
- MACHINES SHOULD BE OPERATED IN VENTILATED AREAS.
- ALWAYS WEAR SAFETY GLASSES OR A FULL FACE SHIELD FOR PROTECTION.
- KEEP HANDS CLEAR OF THE CUTTING AREA.
- DO NOT WEAR GLOVES OR LOOSE FITTING CLOTHES WHEN OPERATING THIS MACHINE.
- ALWAYS KEEP HAIR TIED BACK OR COVERED.
- ABRASIVE MACHINES ARE FOR ABRASIVE WHEELS NOT STEEL TOOTHED BLADES. DO NOT ATTEMPT TO USE STEEL BLADES UNLESS CORRECTLY GUARDED WITH AN ENCLOSED WHEEL GUARD. KEEP STEEL BLADES FULLY RETRACTED INTO THE GUARD WHEN DONE CUTTING.
- ALWAYS KEEP WHEEL GUARD IN DOWN POSITION.
- BE SURE WORK PIECE IS CLAMPED SECURELY IN THE VISE BEFORE CUTTING.



FOR MACHINERY PARTS CHECK LIST ONLY

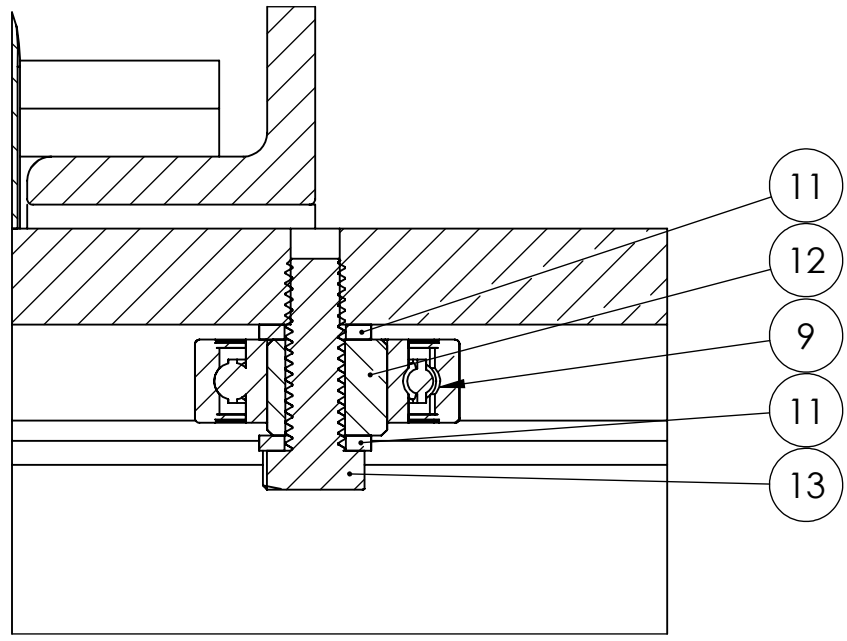
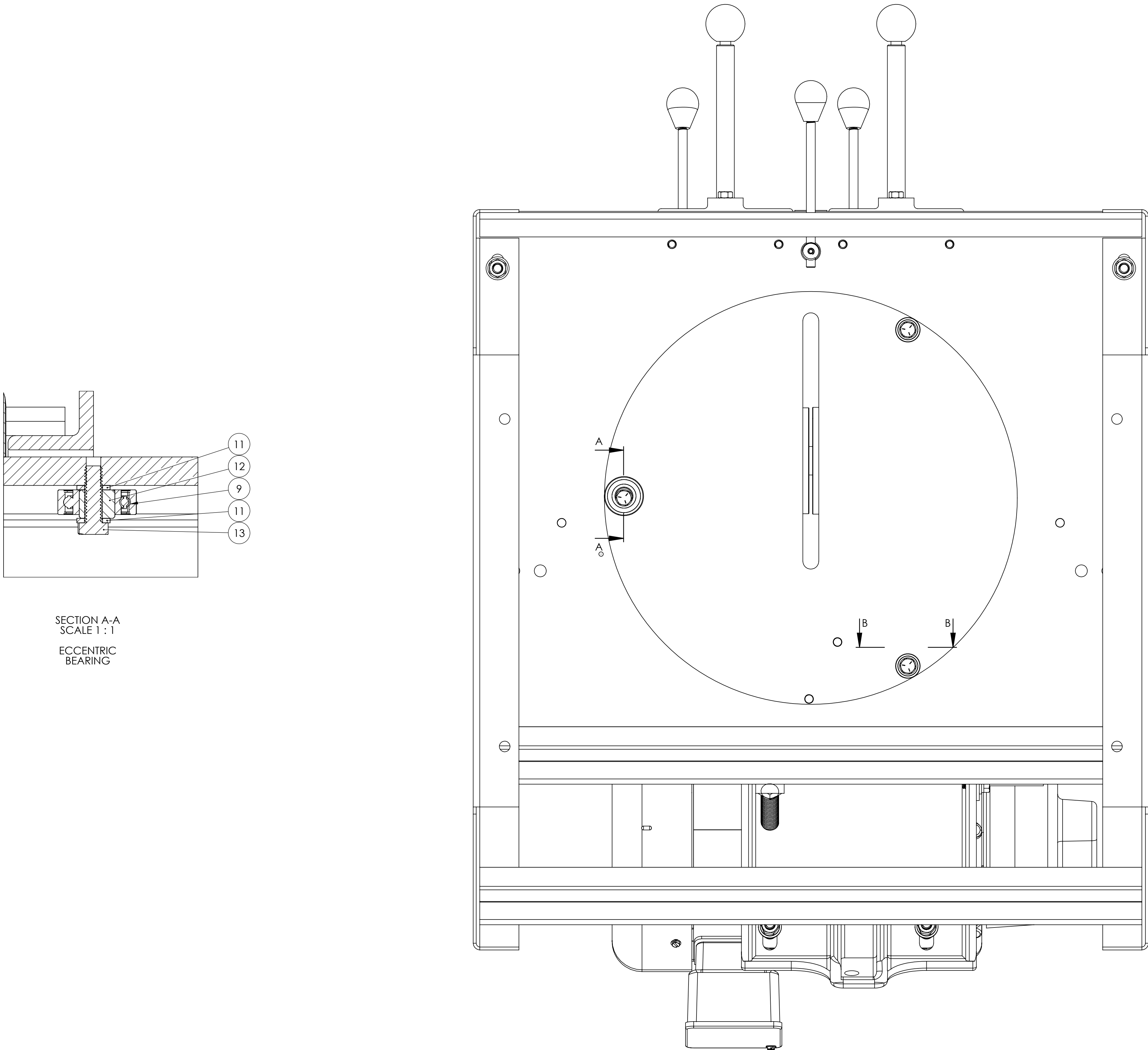


ITEM NO.	PART NUMBER	DESCRIPTION	QTY.
1	716-001	STAND FOR KM14	1
	716-001-A	FRONT PANEL FOR KM14 STAND	1
		Sheet	-
	716-001-B	R.H. PANEL FOR KM14 STAND	1
		Sheet	-
	716-001-C	L.H. PANEL FOR KM14 STAND	1
		Sheet	-
	716-001-D	BACK RAIL FOR KM14 STAND	2
		Sheet	-
2	556-008	PLATE, SQUARE FOR KM10-14	1
3	FSCA037020	3/8-16 X 1-1/4 FSHCS	4
4	FHN5037	3/8-16 FHN GR5 Z	8
5	UFWZ037	3/8 USS F/W Z	8
6	SLWZ037	3/8 SPLIT L/W Z	12
7	050-036	BASE, ROUND PLATE KM14	1
8	044-006	TABLE BEARING (38KDT) FOR KM10, KM14 MITRE SAWS	2
9	044-007	K10 BEARING	1
10	HHC5031012	5/16-18 X 3/4 HHCS GR5 Z	3
11	SLWZ031	5/16 SPLIT L/W Z	13
12	049-001	ECCENTRIC BUSHING FOR KM10 AND KM14 MITRE TOP	1
13	HHC5031016	5/16-18 X 1 HHCS GR5 Z	1
14	454-004	LOCK, TABLE MITRE FOR KM10, KM14	1
15	699-005	SPACER, VISE FOR KM10 AND KM14 SAWS	1
16	696-013	SCREW, TABLE LOCK FOR KM14 MITRE SAW (5 LONG)	1
17	441-002	K10-16 VISE LOCK HANDLE KNOB	1
18	381-012	HANDLE, TABLE LOCK FOR KM14	1
19	RUDZ007008	#7 X 1/2 RD U-DRIVE SCREW Z	1
20	RHRA012008	1/8 ROUND HEAD RIVET	2
21	SSSA025006	1/4-20 X 3/8 SOC SET CUP PT	1
22	FHN5062	5/8-11 FHN GR5 Z	1
23	CPNZ062	5/8-11 CAP NUT Z	1
24	912-016	VISE ASSEMBLY K12-14W, KM10, KM14	2
	386-001	K10-16 VISE HOUSING	1
	645-009	VISE ROD (LONG) FOR KM10, KM14, K12-14W, KM16-18	1
	454-001	K10-16 VISE CAM PLATE	1
	697-001	K10-16 VISE ROD SPRING	1
	129-001	K10-16 VISE CAM	1
	381-001	K10- 16 VISE HANDLE	1
	441-002	K10-16 VISE LOCK HANDLE KNOB	1
	441-001	K10- 16 VISE ROD KNOB	1
	SSSA025024	1/4-20 X 1-1/2 SOC SET CUP PT.	1
	SSSA025022	1/4-20 X 1-3/8 SOC SET CUP PT.	1
	FHN5025	1/4-20 FHN GR5 Z	2
	SSKA010004	10-24 X 1/4 SOC SET KNURL PT	1
	641-016	RETAINING RING SHR-62 ST PA 5/8	1
25	431-001	FRONT VISE JAW K10, K14, KM14	2
26	562-001	VISE JAW PIN FOR K10B, K12B, K14B, KM16-18 VISE ASSEMBLIES	2
27	SHCA031032	5/16-18 X 2 SHCS	20
28	699-004	SPACER, FENCE FOR KM10 AND KM14 SAWS	2
29	293-016	MITRE FENCE FOR KM14	1
	293-001A	L.H. RAIL FOR KM10, KM10HS, KM14 MITRE FENCE	1
	293-001B	R.H. RAIL FOR KM10, KM10HS, KM14 MITRE FENCE	1
	293-001C	RING FOR KM10, KM10HS, KM14 MITRE FENCE	1
30	HHC5037020	3/8-16 X 1-1/4 HHCS GR5 Z	8
31	831-010	TRUNNION FOR KM14	1
32	SHCA037016	3/8-16 X 1 SHCS	3
33	002-002	K12- 14 SAW ARM	1
34	562-019	TRUNNION PIN FOR KM14	1
35	697-024	SPRING, TENSION FOR BG260, S460, S6M SANDERS, K12-14B SAW, KS390, KS490, KS690 BELT GRINDERS	1
36	044-001	K12 BEARING	2
37	701-002	SPINDLE W TIGHT FLANGE FOR K12B, K14B, K12-14W, KM14, K12-14MS	1
38	292-004	K12-14 LOOSE FLANGE	1
39	537-026	L.H. SPINDLE NUT 1"-14 FOR K14, KM14	1
40	SSKA031006	5/16-18 X 3/8 SOC SET KNURL PT.	1
41	560-001	K12- 14 SPINDLE PULLEY	1
42	486-001	5 HP MOTOR FOR K12B, K14B, KM14, KM14HS & S6M5-SHP	1
43	560-002	MOTOR PULLEY SHEAVE FOR K12-14B, K12-14W, K12-14MS AND KM14	1
44	049-022	MOTOR PULLEY BUSHING FOR K12B, K14B AND KM14	1
45	051-006	3V X 3/5 V-BELT FOR K12, K14, KM14 SAWS (REQUIRES 2 BELTS)	2
46	SSKA025004	1/4-20 X 1/4 SOC SET KNURL PT.	3
47	342-086	K12-14 INNER BELT GUARD FOR PLASTIC GUARD	1
		Sheet	-
48	342-086BRKT	K12-14 INNER BELT GUARD BRACKET	1
		Sheet	-
49	RND-0.31-18THRD X3.75	3-3/4 INCHES OF 5/16-18 THREADED ROD	1
50	UFWZ031	5/16 USS F/W Z	4
51	342-004	K12-14 OUTER BELT GUARD/PLASTIC	1
52	381-002	HANDLE W GRIP FOR K12-14 SAWS	1
53	342-025	WHEEL GUARD FOR K12-14B SAWS	1
54	SSBA062044	5/8 X 2 3/4 SOC SHOULDER BOLT	1
55	645-013	ROD STOP FOR KM14	1
56	FJNZ062	5/8-11 F H JAM NUT Z	1
57	347-003	HANDLE GRIP FOR K12 THRU K26 SAWS	1
58	041-057	SWITCH BRACKET FOR K12-K14	1
		Sheet	-
59	696-014	SCREW, STOP FOR KM14	1
	696-014THRDROD	12-3/4 INCHES OF 1/2-13 THREADED ROD	1
	63155K31		1
	ROLA012016	1/8 X 1 ROLL PIN	1
60	FHN5050	1/2-13 FHN GR5 Z	1
61	562-020	TABLE INDEX PIN FOR KM14	1
62	HHC5025008	1/4-20 X 1/2 HHCS GR5 Z	2
63	SLWZ025	1/4 SPLIT L/W Z	2
64	FHN5031	5/16-18 FHN GR5 ZINC	4
65	CPNZ031	5/16-18 CAP NUT NICKEL	1

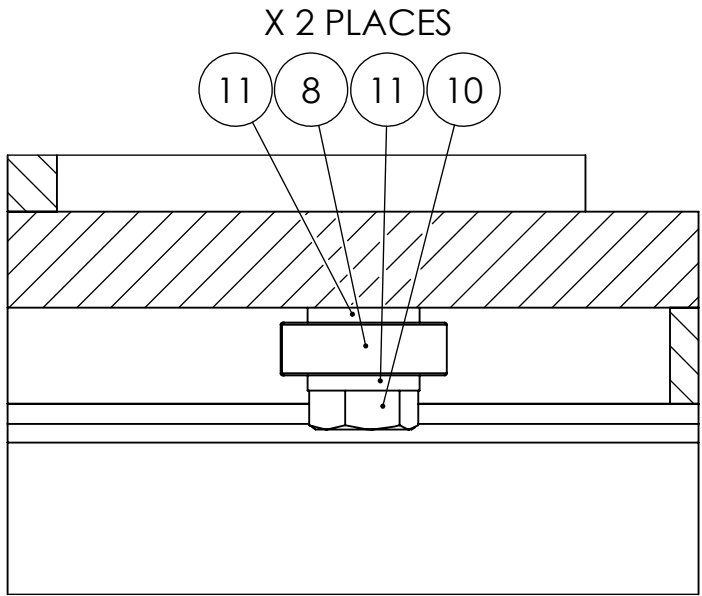
PROPRIETARY/CONFIDENTIAL
THE INFORMATION CONTAINED IN THIS DRAWING IS THE SOLE PROPERTY OF FIRST COMPANY NAME HERE-TO. ANY REPRODUCTION IN PART OR AS A WHOLE WITHOUT THE WRITTEN PERMISSION OF FIRST COMPANY NAME HERE-TO IS PROHIBITED.

UNLESS OTHERWISE SPECIFIED: DIMENSIONS ARE IN INCHES TOLERANCES: FRACTIONS ± ANGULAR ± HOLE DIA ± THREE PLACE DECIMAL ± THREE PLACE DECIMAL ±		DRAWN CHECKED ENG APPR MFG APPR	NAME DATE
INTERPRET GEOMETRIC TOLERANCES PER (ASME)		G.A. COMMENTS:	
NEXT ASST	USED ON	FRST	
APPLICATION		DO NOT SCALE DRAWING	
TITLE: KM14 MITRE SAW		SIZE DWG. NO. E KM14	
SCALE: 1:10 WEIGHT:		REV SHEET 2 OF 3	

FOR MITRE TABLE BEARINGS



SECTION A-A
SCALE 1 : 1
ECCENTRIC
BEARING



SECTION B-B
SCALE 1 : 1
BOTH CONCENTRIC BEARINGS

ITEM NO.	PART NUMBER	DESCRIPTION	QTY.
1	714-001	STAND FOR KM14	1
2	554-008	PLATE, SQUARE FOR KM10-14	1
3	FSCA037020	3/8-16 X 1-1/4 FSHCS	4
4	FHN5037	3/8-16 FHN GR5 Z	8
5	UFWZ037	3/8 USS F/W Z	8
6	SLWZ037	3/8 SPLIT L/W Z	12
7	050-036	BASE, ROUND PLATE KM14	1
8	044-006	TABLE BEARING (38KD) FOR KM10, KM14 MITRE SAWS	2
9	044-007	K10 BEARING	1
10	HHC5031012	5/16-18 X 3/4 HHCS GR5 Z	3
11	SLWZ031	5/16 SPLIT L/W Z	13
12	049-001	ECCENTRIC BUSHING FOR KM10 AND KM14 MITRE TOP	1
13	HHC5031016	5/16-18 X 1 HHCS GR5 Z	1
14	454-004	LOCK, TABLE MITRE FOR KM10, KM14	1
15	699-005	SPACER, VISE FOR KM10 AND KM14 SAWS	1
16	696-013	SCREW, TABLE LOCK FOR KM14 MITRE SAW (5 LONG)	1
17	441-002	K10-16 VISE LOCK HANDLE KNOB	1
18	381-012	HANDLE, TABLE LOCK FOR KM14	1
19	RUDZ007008	#7 X 1/2 RD U-DRIVE SCREW Z	1
20	RHRA012008	1/8 ROUND HEAD RIVET	2
21	SSSA025006	1/4-20 X 3/8 SOC SET CUP PT	1
22	FHN5062	5/8-11 FHN GR5 Z	1
23	CPNZ062	5/8-11 CAP NUT Z	1
24	431-001	FRONT VISE JAW K10, K14, KM14	2
25	562-001	VISE JAW PIN FOR K10B, K12B, K14B, KM16-18 VISE ASSEMBLIES	2
26	SHCA031032	5/16-18 X 2 SHCS	20
27	699-004	SPACER, FENCE FOR KM10 AND KM14 SAWS	2
28	293-016	MITRE FENCE FOR KM14	1
29	HHC5037020	3/8-16 X 1-1/4 HHCS GR5 Z	8
30	831-010	TRUNNION FOR KM14	1
31	SHCA037016	3/8-16 X 1 SHCS	3
32	002-002	K12- 14 SAW ARM	1
33	562-019	TRUNNION PIN FOR KM14	1
34	697-024	SPRING, TENSION FOR BG260, S460, S6M SANDERS, K12-14B SAW, K3390, K3490, K3690 BELT GRINDERS	1
35	044-001	K12 BEARING	2
36	701-002	SPINDLE W TIGHT FLANGE FOR K12B, K14B, K12-14W, KM14, K12-14MS	1
37	292-004	K12-14 LOOSE FLANGE	1
38	537-026	L.H. SPINDLE NUT 1"-14 FOR K14, KM14	1
39	SSKA031006	5/16-18 X 3/8 SOC SET KNURL PT.	1
40	560-001	K12- 14 SPINDLE PULLEY	1
41	486-001	5 HP MOTOR FOR K12B, K14B, KM14, KM14HS & S6MS-SHP	1
42	560-002	MOTOR PULLEY SHEAVE FOR K12-14B, K12-14W, K12-14MS AND KM14	1
43	049-022	MOTOR PULLEY BUSHING FOR K12B, K14B AND KM14	1
44	051-006	3V X 375 V-BELT FOR K12, K14, KM14 SAWS (REQUIRES 2 BELTS)	2
45	SSKA025004	1/4-20 X 1/4 SOC SET KNURL PT.	3
46	342-086	K12-14 INNER BELT GUARD FOR PLASTIC GUARD	1
47	342-086BRKT	K12-14 INNER BELT GUARD BRACKET	1
48	RND-0,31-18THRD X3.75	3-3/4 INCHES OF 5/16-18 THREADED ROD	1
49	UFWZ031	5/16 USS F/W Z	4
50	342-004	K12-14 OUTER BELT GUARD/PLASTIC	1
51	381-002	HANDLE W GRIP FOR K12-14 SAWS	1
52	342-025	WHEEL GUARD FOR K12-14B SAWS	1
53	SSBA062044	5/8 X 2-3/4 SOC SHOULDER BOLT	1
54	645-013	ROD STOP FOR KM14	1
55	FJNZ042	5/8-11 F H JAM NUT Z	1
56	347-003	HANDLE GRIP FOR K12 THRU K26 SAWS	1
57	041-057	SWITCH BRACKET FOR K12-K14	1
58	696-014	SCREW, STOP FOR KM14	1
59	FHN5050	1/2-13 FHN GR5 Z	1
60	562-020	TABLE INDEX PIN FOR KM14	1
61	HHC5025008	1/4-20 X 1/2 HHCS GR5 Z	2
62	SLWZ025	1/4 SPLIT L/W Z	2
63	FHN5031	5/16-18 FHN GR5 ZINC	4
64	CPNZ031	5/16-18 CAP NUT NICKEL	1
65	912-016	VISE ASSEMBLY K12-14W, KM10, KM14	2

PROPRIETARY/CONFIDENTIAL
THE INFORMATION CONTAINED IN THIS
DRAWING IS THE SOLE PROPERTY OF
THE COMPANY NAMED HEREIN. ANY
REPRODUCTION IN PART OR AS A WHOLE
WITHOUT THE WRITTEN PERMISSION OF
THE COMPANY NAMED HEREIN IS
PROHIBITED.

		UNLESS OTHERWISE SPECIFIED: DIMENSIONS ARE IN INCHES TOLERANCES: FRACTIONAL ± ANGULAR ±0.001 HOLE POSITION ±0.004 THREE PLACE DECIMAL ± THREE PLACE DECIMAL ±	DRAWN CHECKED ENG APPR. MFG APPR.	NAME	DATE
		INTERPRET GEOMETRIC TOLERANCES PER (ASME Y14.5)	G.A. COMMENTS:		
NEET ASST	USED ON	FINISH			
APPLICATION		DO NOT SCALE DRAWING			
TITLE: KM14 MITRE SAW					
SIZE DWG. NO. E KM14					
SCALE: 1:10 WEIGHT: SHEET 3 OF 3					