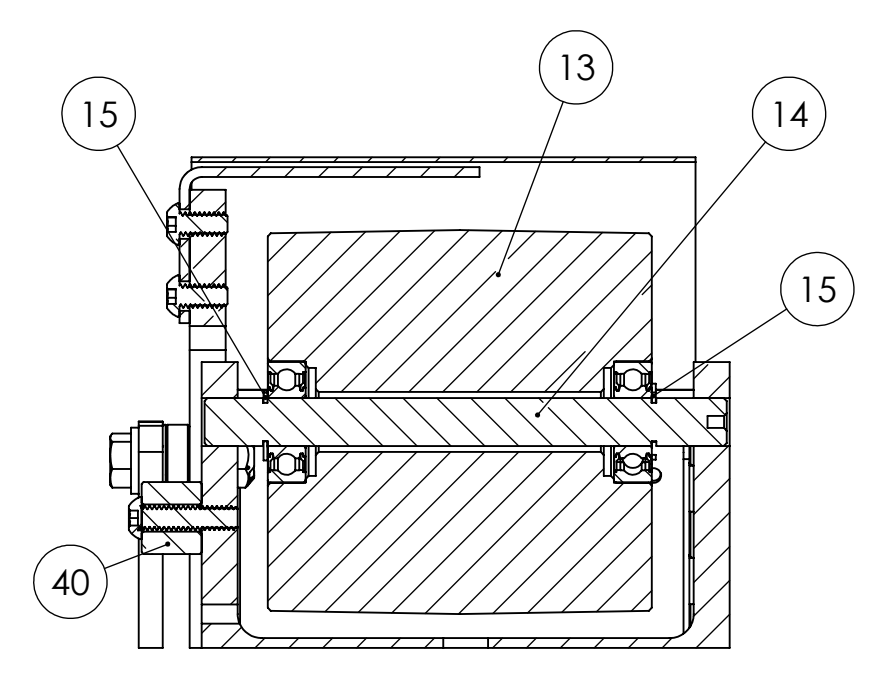


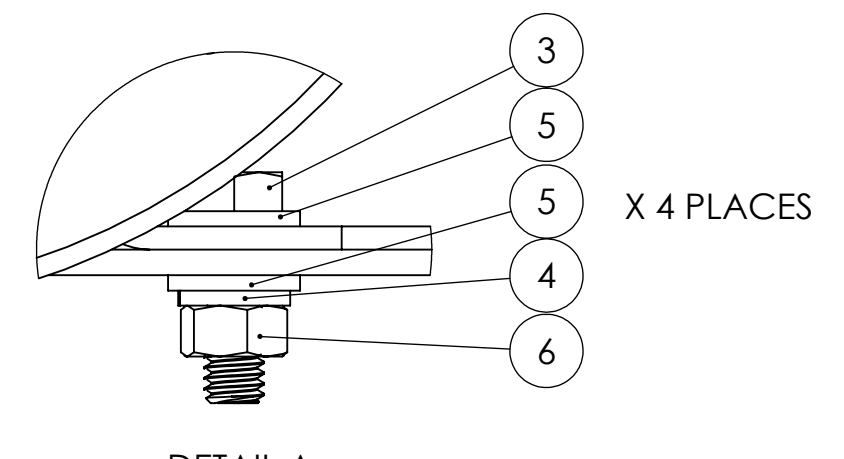
ITEM NO.	PART NUMBER	DESCRIPTION	QTY.
1	829-055	BASE FOR BG248 AND BG448 TO BENCH MOUNT MACHINE	1
2	486-007CF	3HP MOTOR FOR BG448	1
3	HHC5031016	5/16-18 X 1 HHCS GR5 Z	8
4	SLW2031	5/16 SPLIT L/W Z	8
5	UFW2031	5/16 USS F/W Z	13
6	FHN5031	5/16-18 FHN GR5 ZINC	5
7	291-051	FABRICATED MAIN FRAME ASSEMBLY FOR BG448	1
8	SHCA037016	3/8-16 X 1 SHCS	2
9	SLW2037	3/8 SPLIT L/W Z	3
10	UFW2037	3/8 USS F/W Z	3
11	291-050	FABRICATED YOKE SHAFT FRAME FOR BG448	1
12	960-002	YOKE FOR S4 SANDER	1
13	560-006AL	BG448 IDLER PULLEY W BEARINGS	1
14	701-008S	IDLER SPINDLE FOR BG448 BELT GRINDER	1
15	EERR0.5	EERR1/2 1/2" E RETAINING RING	2
16	SSKA010004	10-24 X 1/4 SOC SET KNURL PT	2
17	700-042	YOKE SHAFT FOR BG448	1
18	697-024	S6 BELT TENSION SPRING	1
19	123-034	TENSION SHAFT COLLAR FOR BG448	1
20	292-023B	WHEEL ADAPTOR FOR 936-018 AND 936-033	1
21	292-023C	SPINDLE ADAPTOR FOR BG448	1
22	292-027	LOOSE FLANGE FOR WHEEL ADAPTOR FOR 2F572 AND BG448 (NEW STYLE)	1
23	936-033	N134-8-4-0-C7072 8"X4" CONTACT WHEEL, 70 DURO, SERRATED FOR BG448	1
24	SSDA025008	1/4-20 X 1/2 SOC SET FULL DOG PT	3
25	049-062	P2-1-1/8 SPLIT TAPER BUSHING FOR KS390HV, 490HV, BG448, 690HV-SHP DRIVE WHEEL	1
26	FSCA037016	3/8-16 X 1 FSHCS	3
27	563-044	PLATEN FOR BG448	1
28	FSCA025016	1/4-20 X 1 FSHCS	2
29	829-034	CAST IRON WORK TABLE FOR S272, S460, AND BG448	1
30	HHC5037020	3/8-16 X 1-1/4 HHCS GR5 Z	1
31	CRW2010024	10-24 X 1-1/2 COMBO ROUND M/S Z	1
32	697-011	TRACKING SPRING FOR S4	1
33	HHC5031020	5/16-18 X 1-1/4 HHCS GR 5 Z	2
34	SSSA025022	1/4-20 X 1-3/8 SOC SET CUP PT.	2
35	FHN5025	1/4-20 FHN GR5 Z	2
36	UFW2025	1/4 USS F/W Z	4
37	WGNZ025	1/4-20 FORGED WING NUT Z	2
38	381-023	TENSION RELEASE HANDLE FOR BG448M	1
39	BSCA025016	1/4-20 X 1 BSHCS	1
40	RND-3/4CF1018X0.875	5/8 INCHES OF RAW MATERIAL RND-3/4 CF C1018	1
41	BWWA031	5/16 BOWED SPRING WASHER 21/64	1
42	699-053	SPACER, TENSION HANDLE FOR BG448	1
43	STN2031	5/16-18 STOVER LOCK NUT ZINC-WAX	1
44	BSCA025008	1/4-20 X 1/2 BSHCS	2
45	342-010	UMBRELLA GUARD ASSEMBLY FOR BG448 SANDER	1

NOTE #1: 936-033 ASSY INCLUDES THE FOLLOWING:
 936-033
 049-062
 292-023B
 292-027
 292-023C

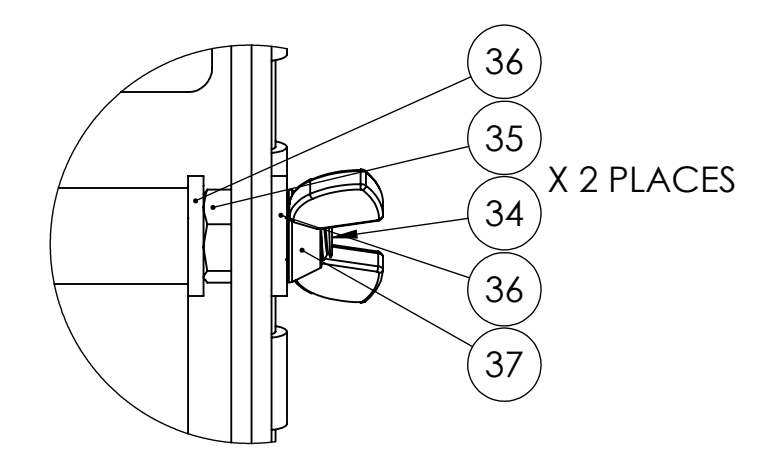
ORDER PART #342-088
 IF A REPLACEMENT
 DOOR IS NEEDED



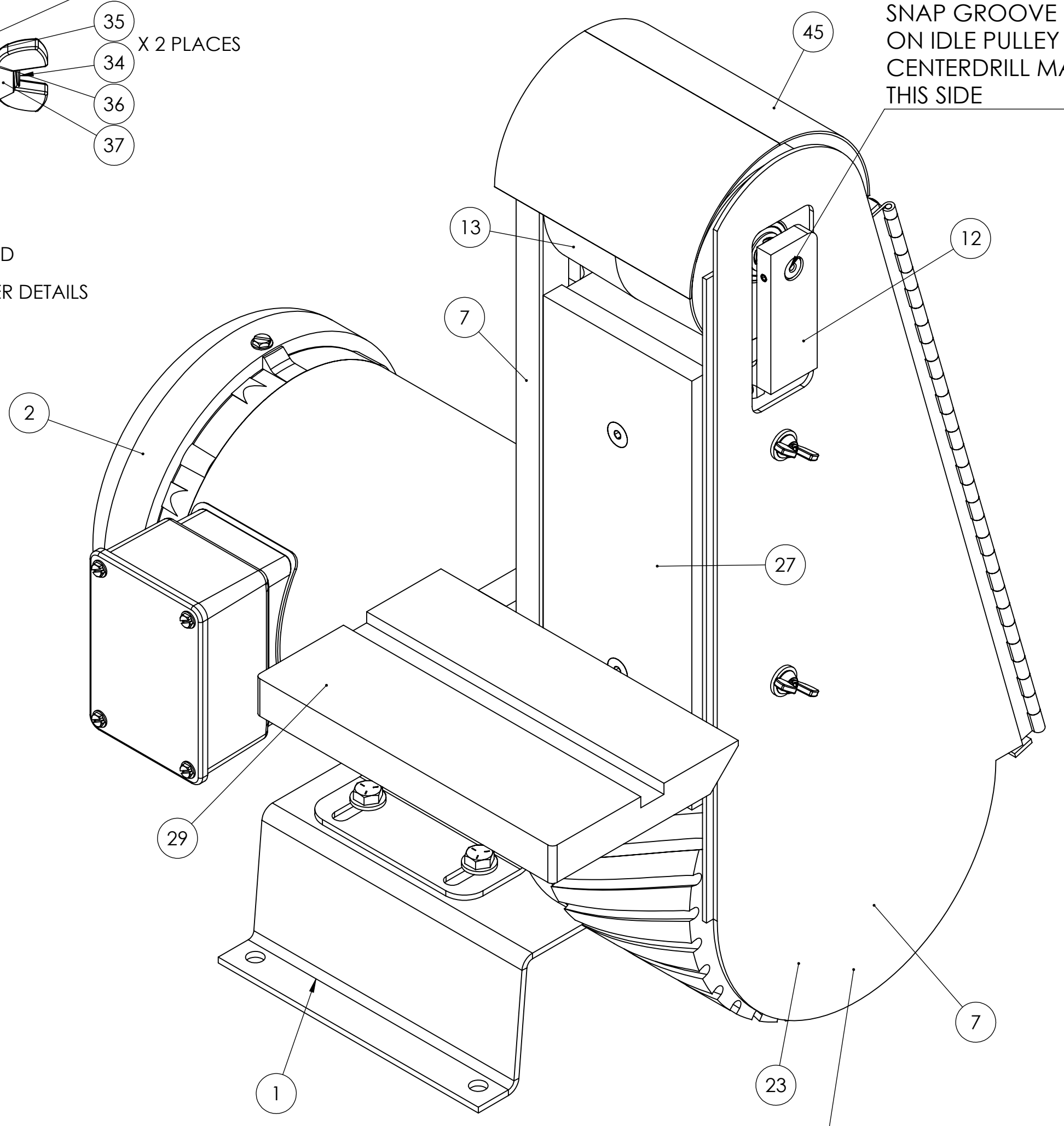
SECTION E-E
 IDLER PULLEY DETAILS



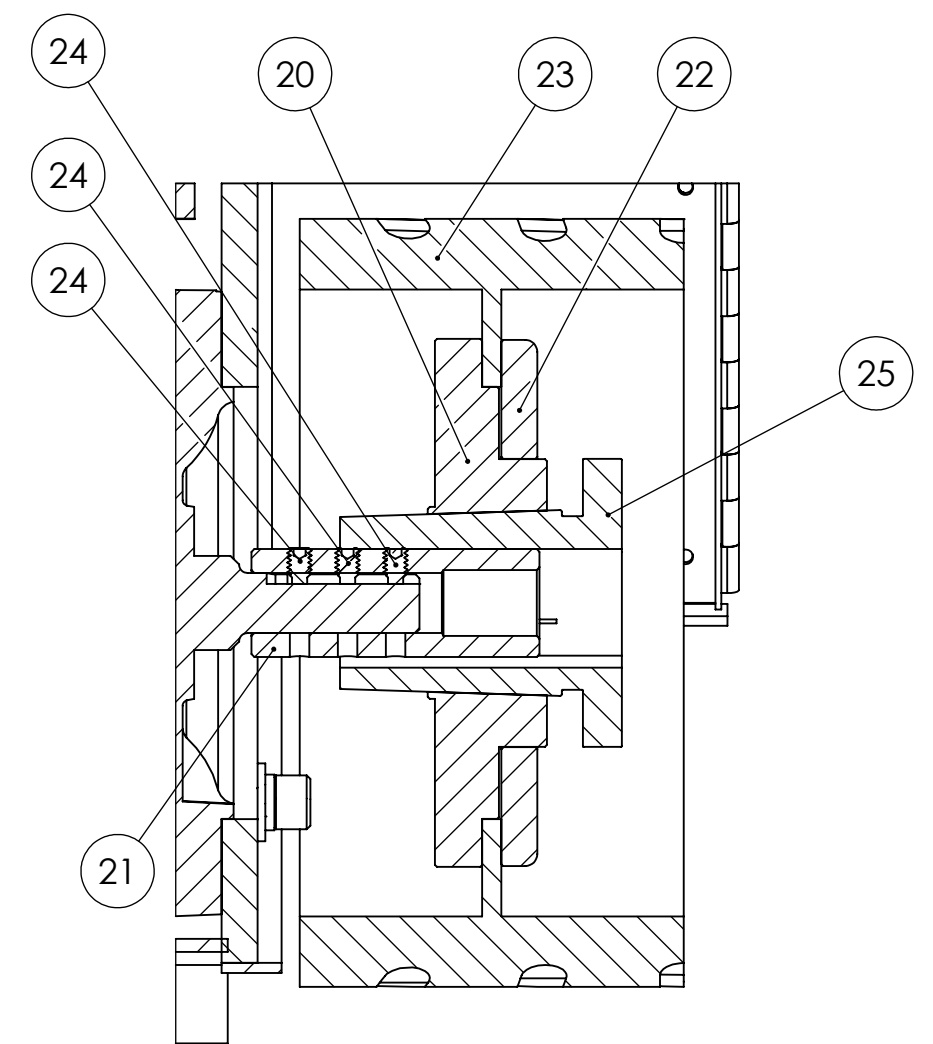
DETAIL A
 SCALE 1:1
 MOTOR MOUNT DETAILS



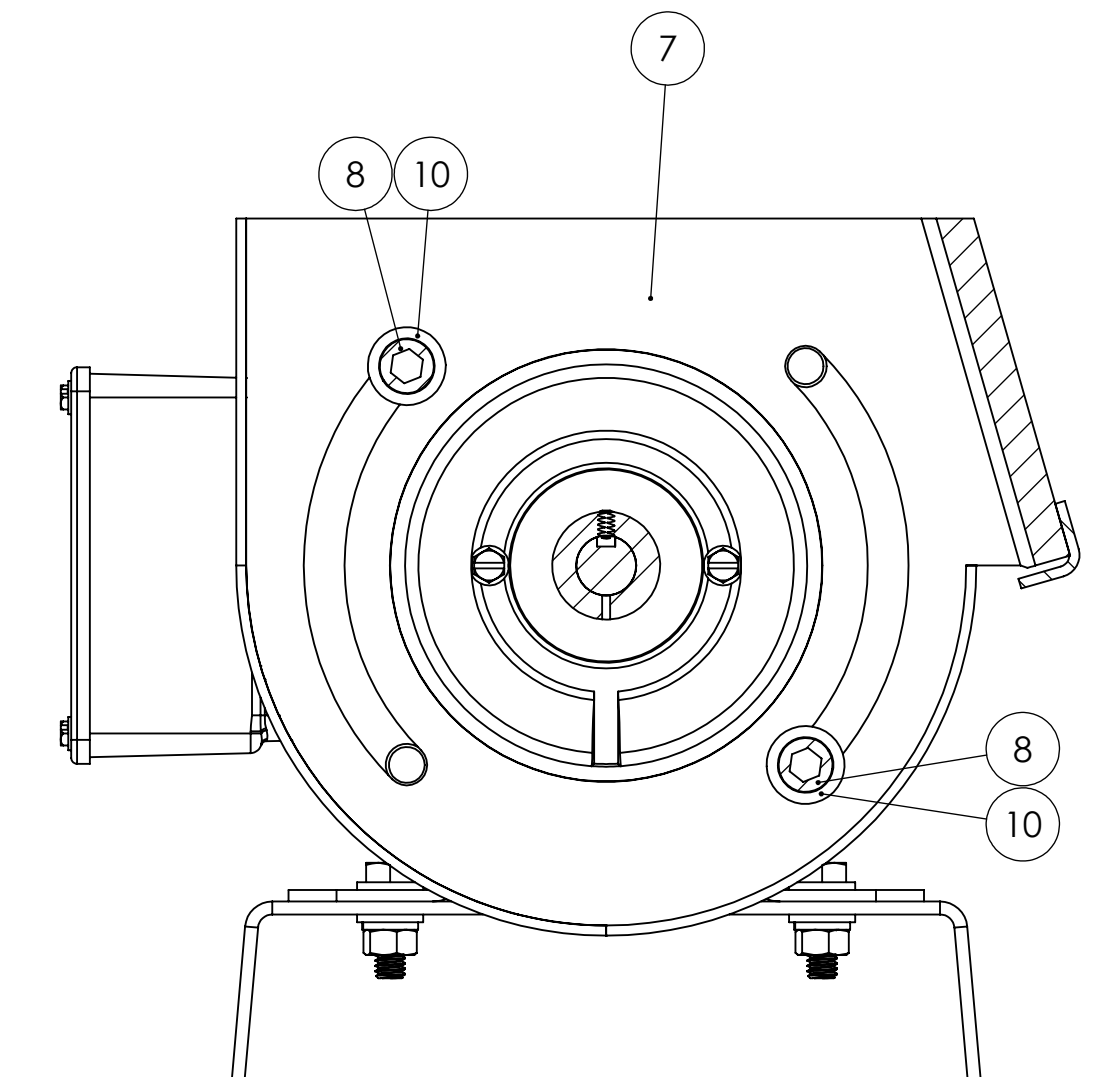
DETAIL D
 DOOR FASTENER DETAILS



LONGER DISTANCE TO
 SNAP GROOVE RING
 ON IDLE PULLEY SHAFT.
 CENTERDRILL MARK ON
 THIS SIDE



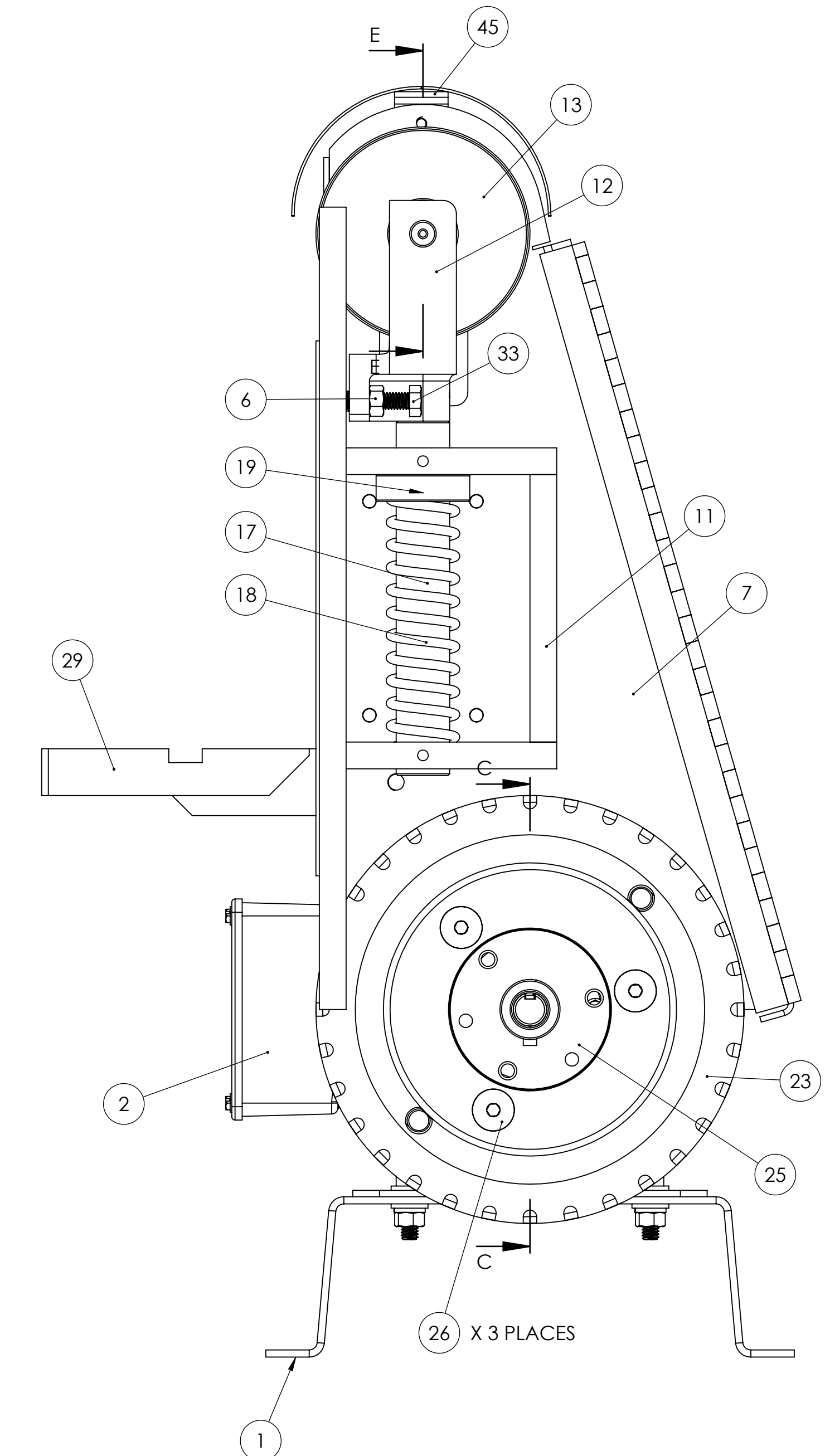
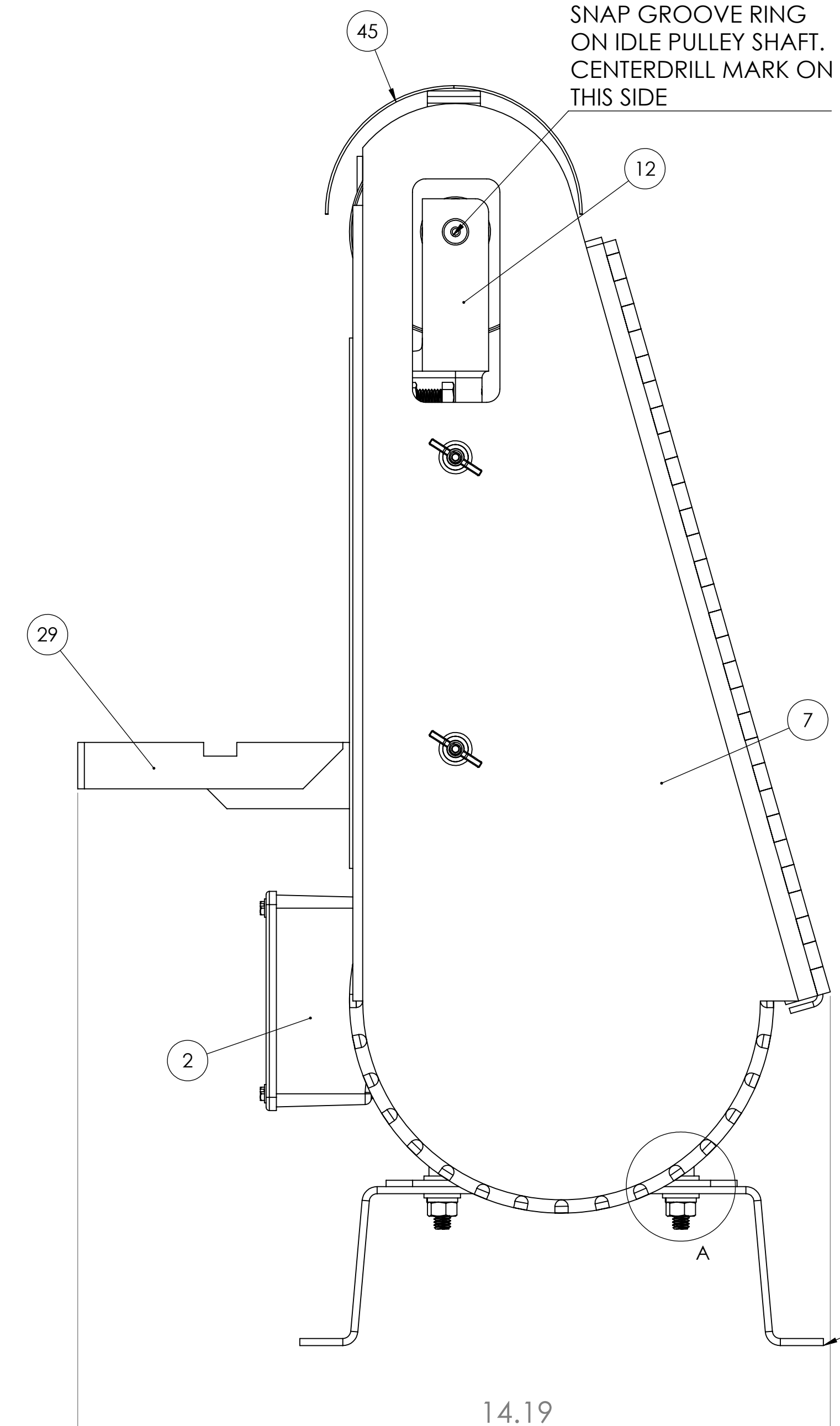
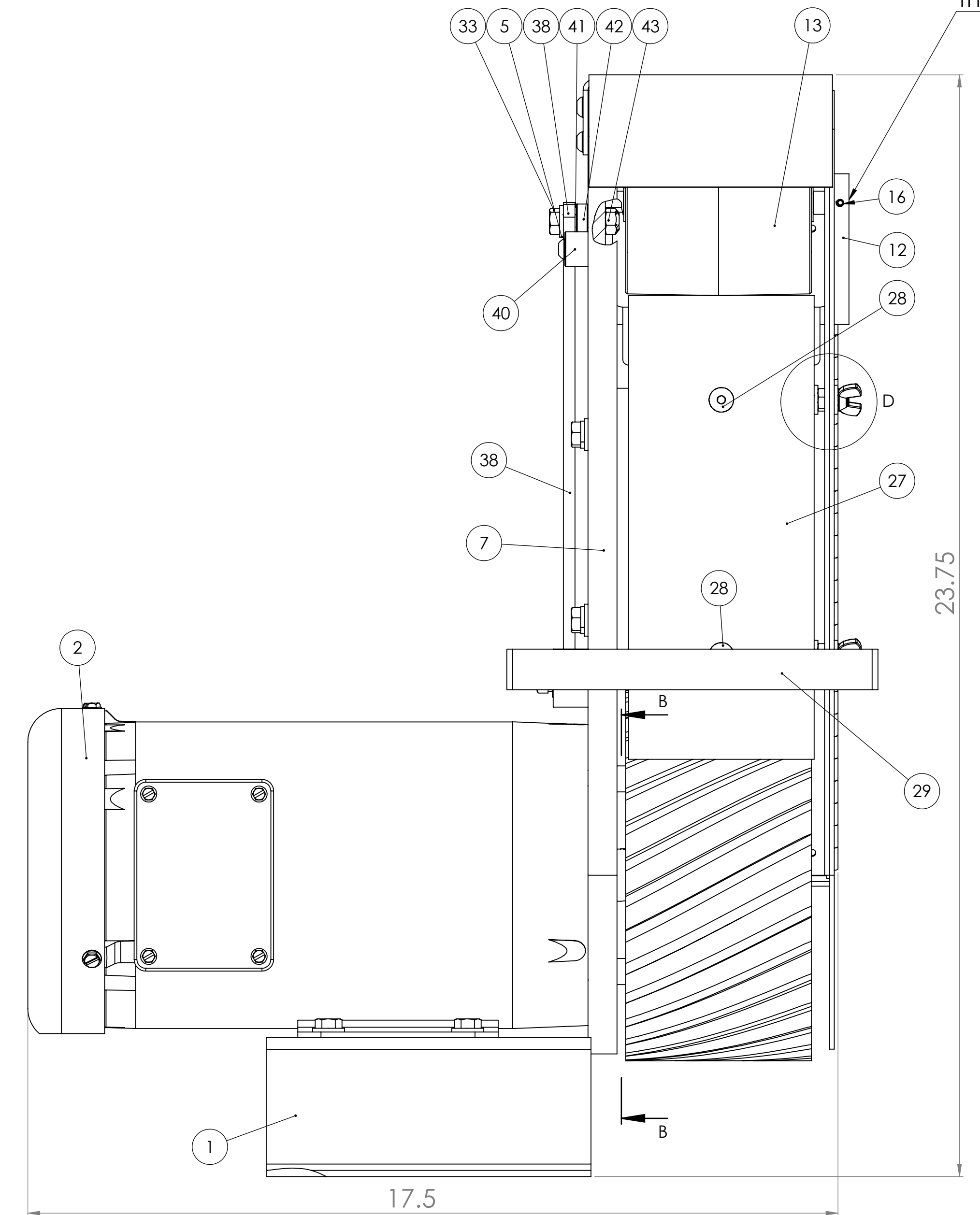
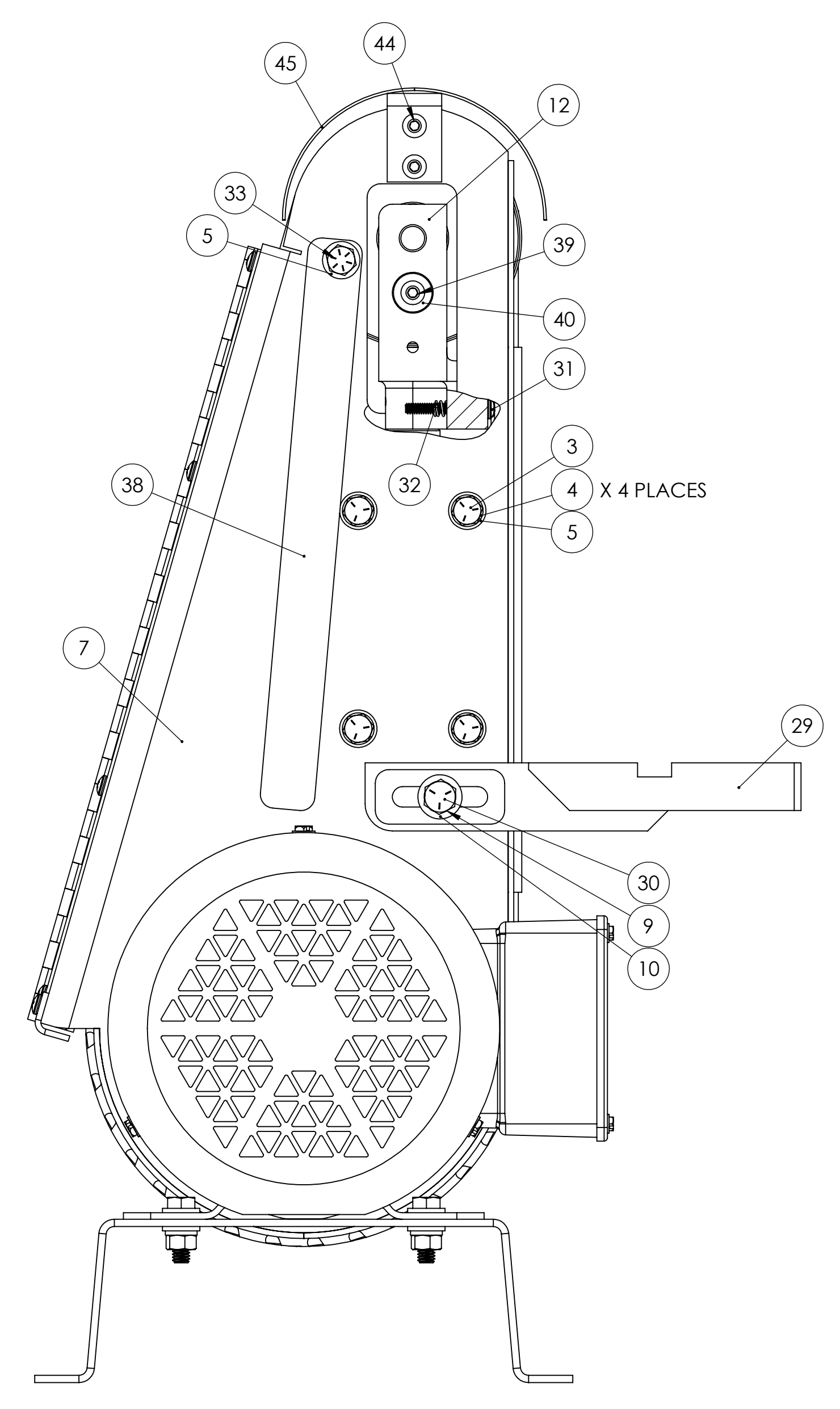
SECTION C-C
 DRIVE PULLEY DETAILS



SECTION B-B
 ATTACHING MAIN FRAME
 TO MOTOR

LONGER DISTANCE TO
 SNAP GROOVE RING ON
 IDLE PULLEY SHAFT.
 CENTERDRILL MARK ON
 THIS SIDE

LONGER DISTANCE TO
 SNAP GROOVE RING ON
 IDLE PULLEY SHAFT.
 CENTERDRILL MARK ON
 THIS SIDE



UNLESS OTHERWISE SPECIFIED:
 DIMENSIONS ARE IN INCHES
 TOLERANCES:
 FRACTIONS ± .005
 ANGULAR ± .001
 THREE PLACE DECIMAL ± .001
 INTERFERE GEOMETRIC TOLERANCES PER ASME Y14.5
 DIMENSIONS ARE IN INCHES
 CHECKED:
 ENG APPR:
 DATE:
 COMMENTS:
 KALAMAZOO
BG448 ASSEMBLY
 DWG. NO. BG448 ASSEMBLY
 SCALE: 1:2 WEIGHT: SHEET 1 OF 1