

KI KALAMAZOO
INDUSTRIES, INC.
KALAMAZOO, MI

PH: (269) 382-2050

www.kalamazooind.com



BG142 BELT GRINDER MANUAL



MADE IN USA

KI KALAMAZOO INDUSTRIES, INC. KALAMAZOO, MI



PH: (269) 382-2050

www.kalamazooind.com

WARNING!

TO REDUCE THE RISK OF FIRE OR SHOCK HAZARD,
DO NOT EXPOSE THIS EQUIPMENT TO RAIN, ANY LIQUID OR MOISTURE.

INSPECTION

If these goods are damaged in transit, the **DELIVERING TRANSPORTATION COMPANY** is required by law to make notation of damages on the freight bill. If in your opinion, there may be concealed damage, they are required to make an inspection after goods are unpacked. Transportation rates are made in proportion to damage. Therefore, the carrier and **NOT** the shipper should be charged with any loss or damage. Any claim should be filled with the delivering **TRANSPORTATION COMPANY. PLEASE DO NOT RETURN GOODS TO US WITHOUT OUR RGA NUMBER AND SHIPPING INSTRUCTIONS.**

NOTE: SEE NEXT PAGE FOR RETURN POLICY AND WARRANTY.

IMPORTANT

Read Operating Instructions before using equipment.

OPERATING INSTRUCTION

1. **Disconnect power** before making any adjustments.
2. Abrasive belt rotation is counter-clockwise. If the abrasive belt is lap spliced be sure of the correct belt rotation. Butt spliced belts bi-directional.
3. Belt tension is pre-set with internal spring **(13)**. No belt tension adjustment is required.
4. To change belt **disconnect power**, loose tracking knob **(15)**, compress spring belt tension by pushing down on tension shaft **(12)**, remove belt and replace with new belt of your choice.
5. Belt tracking- with power disconnected rotate belt by hand to center or "track" sanding belt. Rotate tracking knob **(15)** and tracking collar **(14)**, left and or right turns the tension shaft **(12)** to "track" the belt. Re-lock the tracking knob **(15)** to lock in belt tracking.

KI **KALAMAZOO** INDUSTRIES, INC. KALAMAZOO, MI

PH: (269) 382-2050

www.kalamazooind.com



WARRANTY

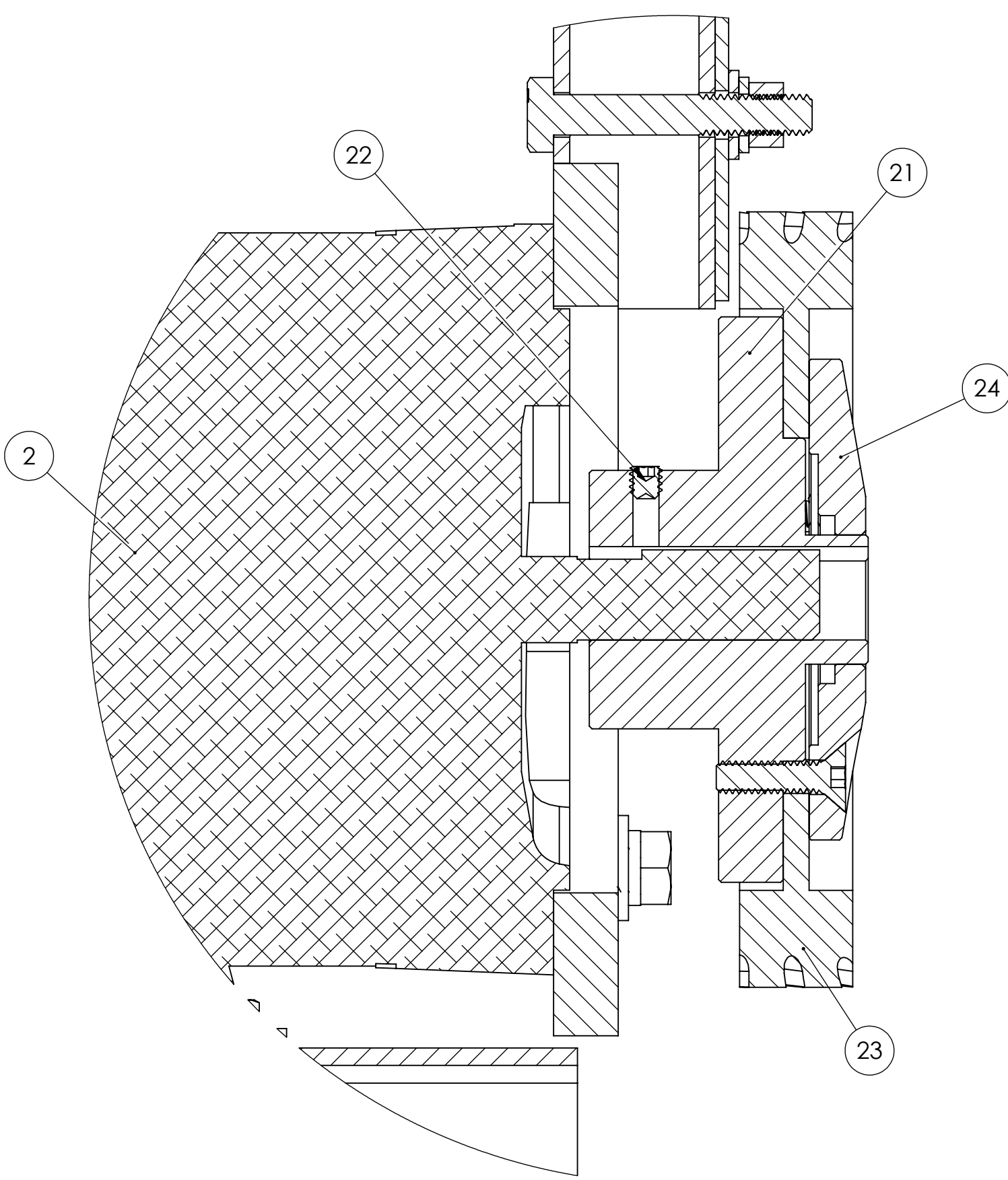
All products are guaranteed for a period of one year from receipt of order to the original purchaser, against defects in material workmanship under normal use. Electric motors are warranted by the motor manufacturer for a period of one year and will be repaired by the nearest motor repair station. If non-repairable, they will be replaced by Kalamazoo Industries. Please call for instructions (269) 382-2050.

RETURN POLICY

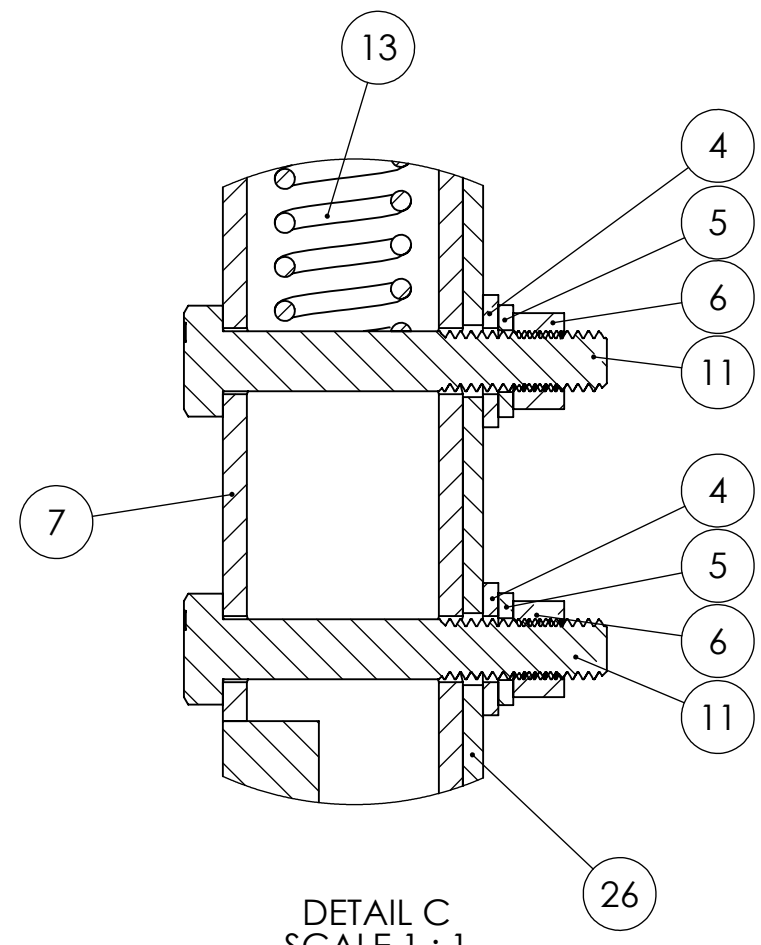
Authorization must be obtained before returning merchandise. Please call our customer service department for a return authorization number (269) 382-2050. Please include with your return a copy of your invoice of packing slip. All material must be new and unused in the original packaging. Material must be sent back prepaid (unless otherwise indicated) by Kalamazoo Industries. Credit upon inspection at Kalamazoo Industries. All returns will be subject to a 10% restock charge. Used merchandise is non-returnable. No returns will be accepted after one year of invoice date.

BELT GRINDER SAFETY

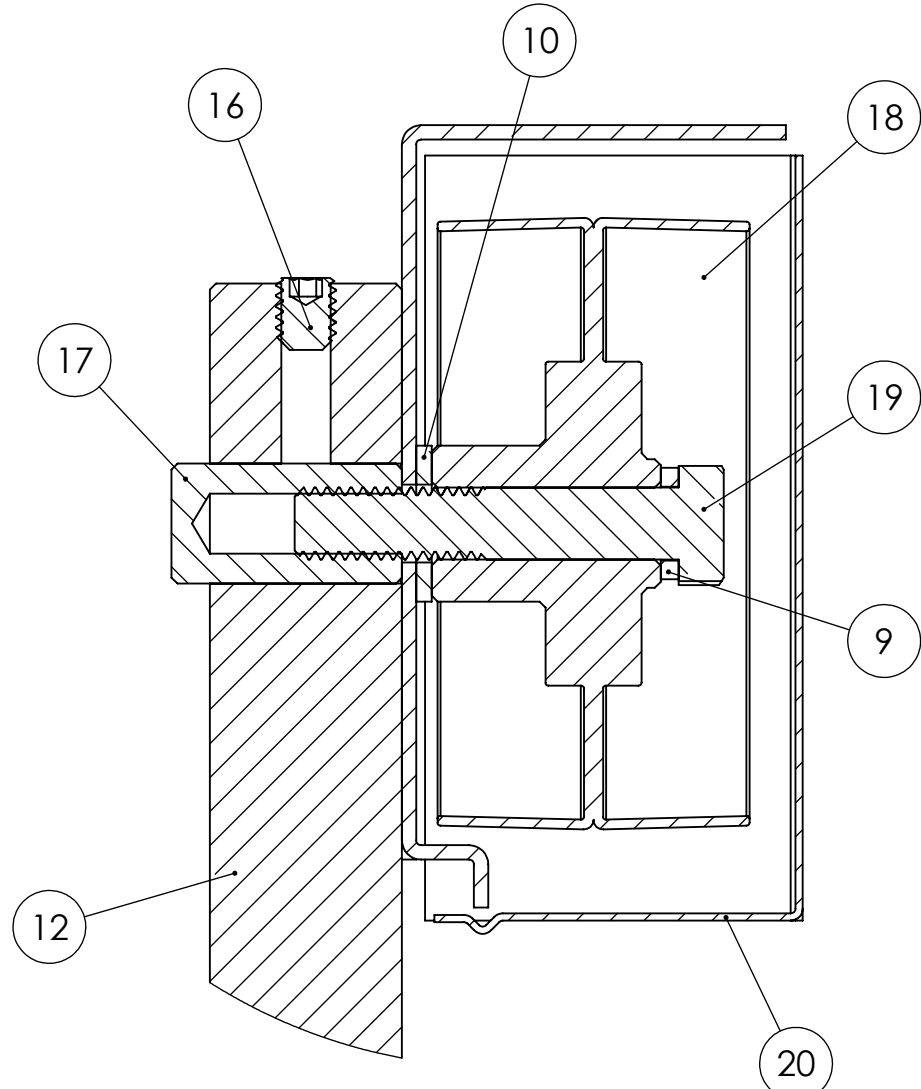
- READ THE OPERATING INSTRUCTIONS BEFORE RUNNING MACHINE.
- ALWAYS WEAR SAFETY GLASSES OR A FULL FACE SHIELD FOR PROTECTION.
- KEEP HANDS CLEAR OF THE SANDING AREA.
- NEAR WEAR GLOVES OR LOOSE FITTING CLOTHES WHEN OPERATING THIS MACHINE.
- ALWAYS KEEP HAIR TIED BACK OR COVERED.
- LET MACHINE ROTATION COME TO A FULL STOP BEFORE CHANGING BELT.
- KEEP SAFETY GUARDS IN PLACE. DO NOT ALTER GUARD OR MACHINE IN ANYWAY. ANY ALTERATIONS TO GUARDS OR MACHINE COULD CAUSE SERIOUS INJURY.
- ALL BELT SANDERS SHOULD BE OPERATED IN A WELL-VENTILATED AREA. THE DUST CREATED WHEN SOME MATERIALS ARE SANDED CAN BE HARMFUL. DUST MASKS ARE RECOMMEND AS A PRACTICAL MEAN OF MINIMIZING DUST INHALATION. FUMES FROM OTHER OTHER SOURCES CAN ALSO CAUSES FIRES WHEN INTACT WITH SANDING SPARK.
- SPARKS CREATED BY SANDING SHOULD BE DIRECTED DOWNWARD AND AWAY FROM THE FACE AND BODY. DON NOT GRIND NEAR FLAMMABLE MATERIAL.
- ELECTRIC SANDING MACHINES ARE NOT INTENDED FOR USE IN OR NEAR WATER. THIS INCLUDES AN OPERATOR STANDING ON A WET FLOOR OR WORKING AROUND CONTAINERS OF WATER OR OTHER CONDUCTIVE LIQUIDS.
- CLEAN DUST COLLECTOR OUT AND DON'T MIX MATERIALS.



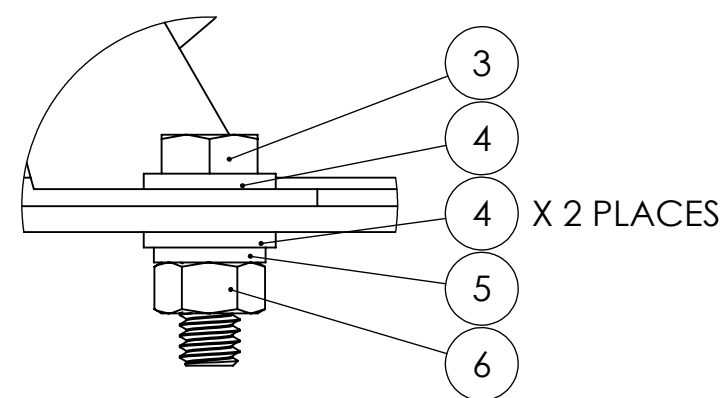
DETAIL B
SCALE 1 : 1
DRIVE PULLEY DETAILS



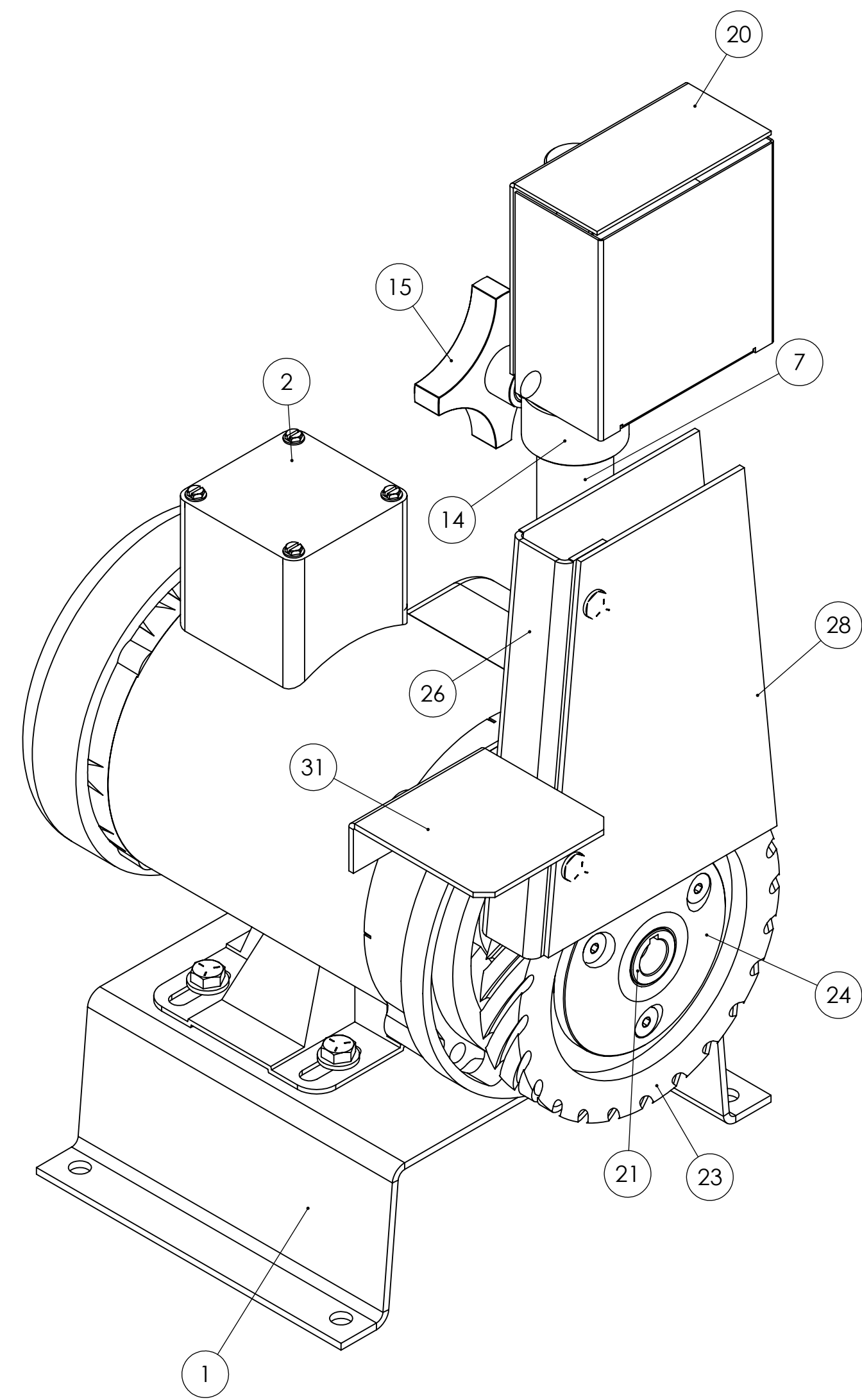
DETAIL C
SCALE 1 : 1
TENSION SPRINGS AND
PLATEN ATTACHMENT BOLTS



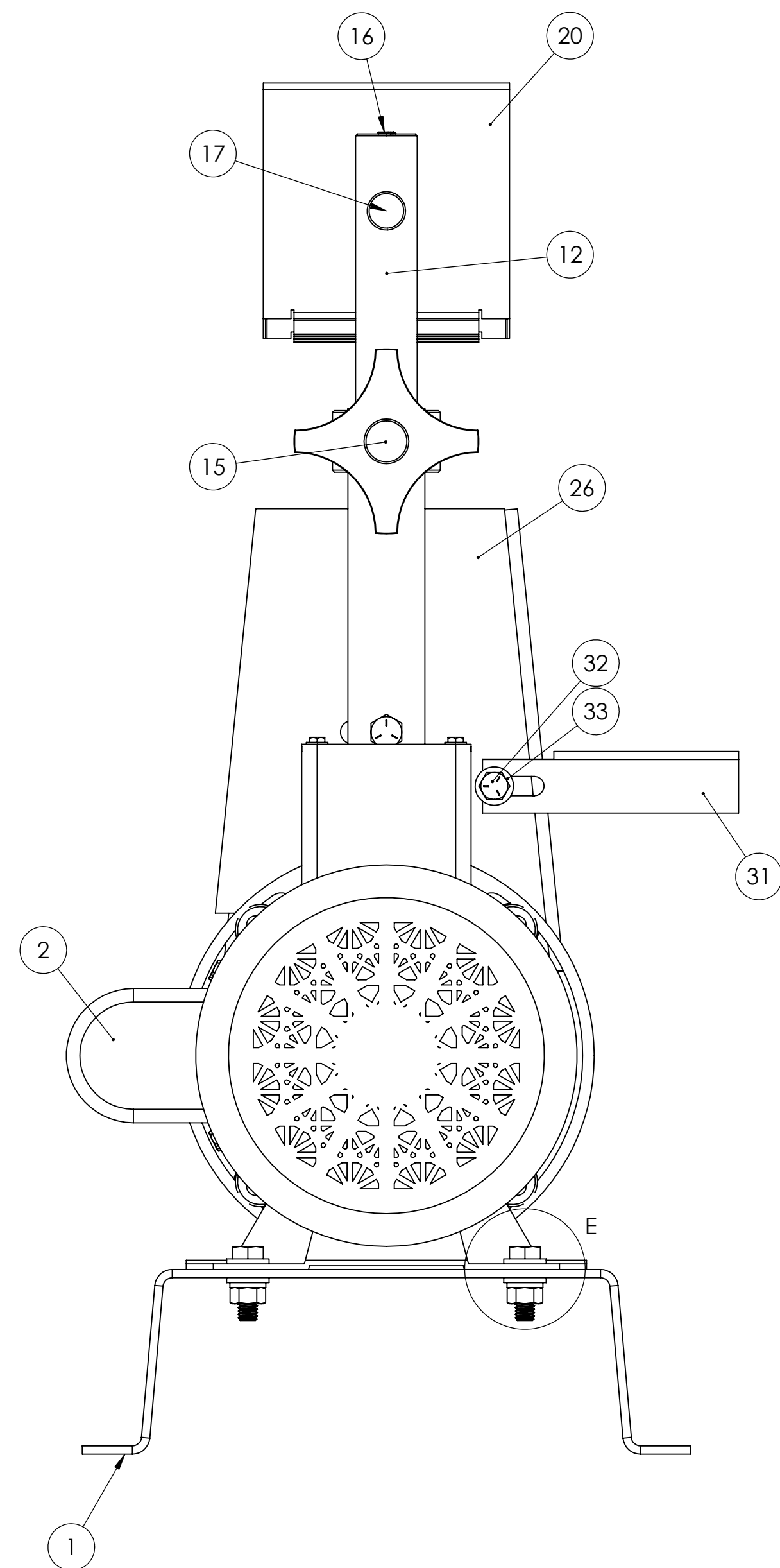
DETAIL D
SCALE 1 : 1
IDLER PULLEY DETAILS



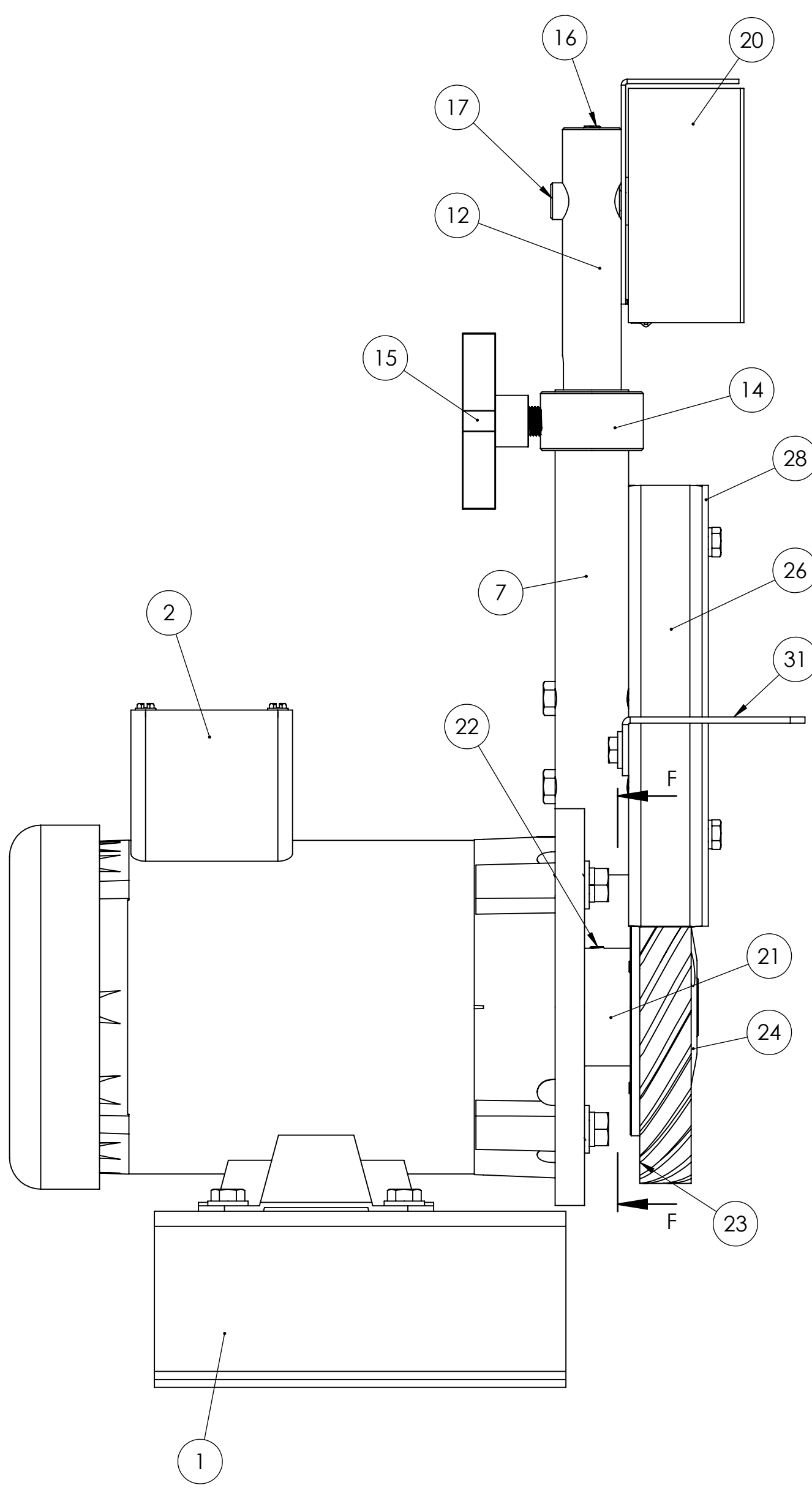
DETAIL E
SCALE 1 : 1
MOTOR MOUNT DETAILS



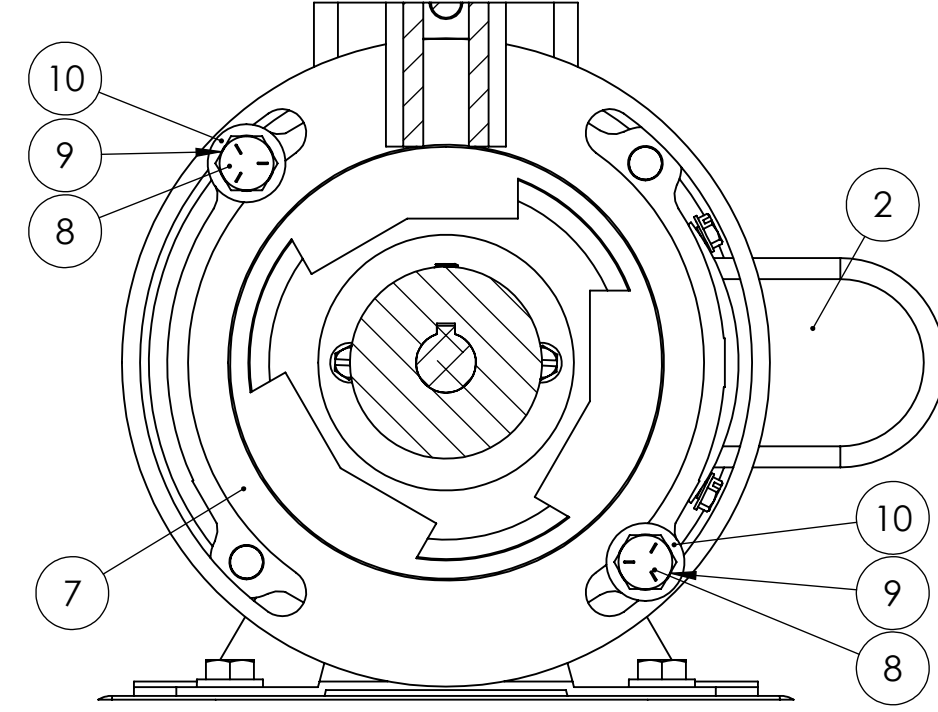
ITEM NO.	PART NUMBER	DESCRIPTION	QTY.
1	829-055	BASE FOR BG248 AND BG448 TO BENCH MOUNT MACHINE	1
2	486-077	1/2HP MOTOR FOR NEW STYLE 2FS72M AND BG248	1
3	HHC5031016	5/16-18 X 1 HHCS GR5 Z	4
4	UPFW2031	5/16 USS F/W Z	10
5	SLW2031	5/16 SPLIT L/W Z	6
6	FHN5031	5/16-18 FHN GR5 ZINC	6
7	832-026	TUBE SUPPORT W/ RING FOR BG142	1
8	HHC5037020	3/8-16 X 1-1/4 HHCS GR5 Z	2
9	SLW2037	3/8 SPLIT L/W Z	3
10	UPFW2037	3/8 USS F/W Z	3
11	HHC5031032	5/16-18 X 2 HHCS GR5 Z	2
12	645-008	TENSION ROD FOR 2FS, 2FSM, 2FS72, 2SK7 SANDERS	1
13	697-013	TENSION SPRING FOR 2FS, 2FS72, 2FSM, BG142, 2FS72M, K12-148	1
14	123-004	TRACKING COLLAR FOR 2FS, 2FS72, 2FSM, 2SK7, BG142	1
15	441-011	TRACKING KNOB FOR 2FS, 2FS72, 2FSM, 2SK7 SANDERS	1
16	SSKA031006	5/16-18 X 3/8 SOC SET KNURL PT.	1
17	004-006	ADAPTOR FOR 936-003 IDLER PULLEY	1
18	560-018	1SM IDLER PULLEY	1
19	HHC5037032	3/8-16 X 2 HHCS GR5 Z	1
20	342-087	1SM, 1SK6 GUARD FOR IDLER PULLEY	1
21	292-049	WHEEL ADAPTOR HUB (TIGHT FLANGE) FOR BG142	1
22	SSKA025004	1/4-20 X 1/4 SOC SET KNURL PT.	1
23	936-034	CONTACT WHEEL DRIVE (6 X 7/8) FOR BG142	1
24	292-050	OUTER WHEEL ADAPTOR (LOOSE FLANGE) FOR BG142	1
25	FSCA025016	1/4-20 X 1 FSHCS	3
26	563-045	PLATEN FOR BG142 W/ SIDE PLATE	1
27	BUCKND2116	1/4-20 TAB SPOT WELD NUT	1
28	563-045SP	SIDE PLATE FOR BG142 PLATEN	1
29	HHC5025008	1/4-20 X 1/2 HHCS GR5 Z	2
30	SLW2025	1/4 SPLIT L/W Z	2
31	829-013	1SM WORK TABLE	1
32	HHC5025012	1/4-20 X 3/4 HHCS GR5 Z	1
33	UPFW2025	1/4 USS F/W Z	1



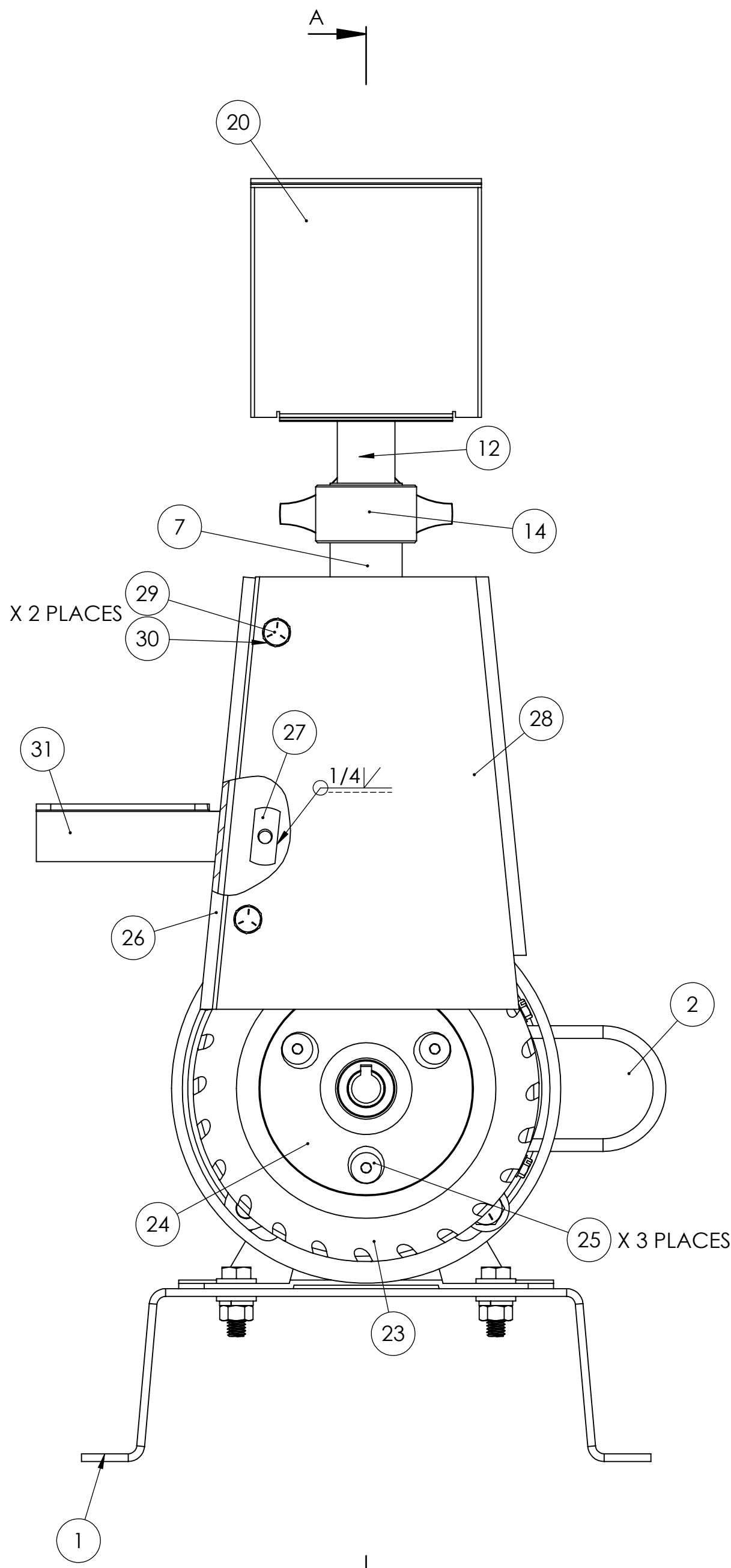
LEFT SIDE VIEW



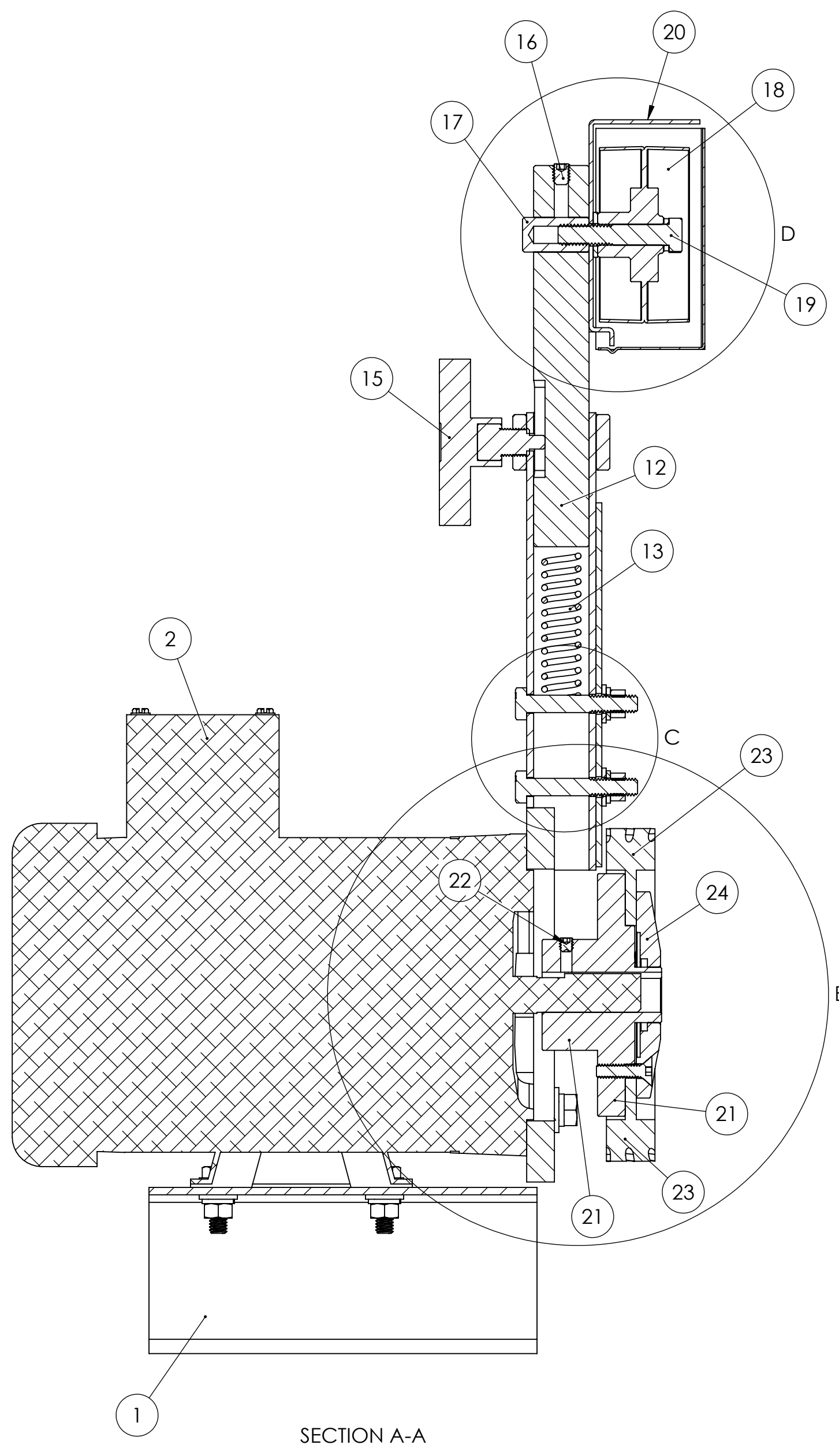
FRONT VIEW



SECTION F-F
ATTACHING TUBE SUPPORT W RING
TO MOTOR



RIGHT SIDE VIEW



SECTION A-A

PROPRIETARY AND CONFIDENTIAL
THE INFORMATION CONTAINED IN THIS
DRAWING IS THE SOLE PROPERTY OF
KALAMAZOO TOOL WORKS, INC. ANY
REPRODUCTION IN PART OR AS A WHOLE
WITHOUT THE WRITTEN PERMISSION OF
KALAMAZOO TOOL WORKS, INC. IS
PROHIBITED.

UNLESS OTHERWISE SPECIFIED:	THICKNESS	NAME	DATE
DIMENSIONS ARE IN INCHES TOLERANCES: FRACTIONS < 1/8" .005 ANGULAR < 30° .005 THREE PLACE DECIMAL .005	DRAWN CHECKED ENG APPR. MFG APPR.		
INTERPRET GEOMETRIC TOLERANCES PER ASME Y14.5	COMMENTS:		
NEST ASST	USED ON	FRSH	
APPLICATION	DO NOT SCALE DRAWING		

TITLE
1/2HP, 1PH, 5400SFPM 1"
X 42" MULTI POSITION BELT
GRINDER

SIZE DWG. NO.
E BG142

SCALE: 1:2 WEIGHT: SHEET 1 OF 1