

KI **KALAMAZOO**
INDUSTRIES, INC.
KALAMAZOO, MI



PH: (269) 382-2050

www.kalamazooind.com

BG14 BACKSTAND GRINDER MANUAL



MADE IN USA

KI **KALAMAZOO** INDUSTRIES, INC. KALAMAZOO, MI



PH: (269) 382-2050

www.kalamazooind.com

WARRANTY

All products are guaranteed for a period of one year from receipt of order to the original purchaser, against defects in material workmanship under normal use. Electric motors are warranted by the motor manufacturer for a period of one year and will be repaired by the nearest motor repair station. If non-repairable, they will be replaced by Kalamazoo Industries. Please call for instructions (269) 382-2050.

RETURN POLICY

Authorization must be obtained before returning merchandise. Please call our customer service department for a return authorization number (269) 382-2050. Please include with your return a copy of your invoice of packing slip. All material must be new and unused in the original packaging. Material must be sent back prepaid (unless otherwise indicated) by Kalamazoo Industries. Credit upon inspection at Kalamazoo Industries. All returns will be subject to a 10% restock charge. Used merchandise is non-returnable. No returns will be accepted after one year of invoice date.

BELT GRINDER SAFETY

- READ THE OPERATING INSTRUCTIONS BEFORE RUNNING MACHINE.
- ALWAYS WEAR SAFETY GLASSES OR A FULL FACE SHIELD FOR PROTECTION.
- KEEP HANDS CLEAR OF THE SANDING AREA.
- NEAR WEAR GLOVES OR LOOSE FITTING CLOTHES WHEN OPERATING THIS MACHINE.
- ALWAYS KEEP HAIR TIED BACK OR COVERED.
- LET MACHINE ROTATION COME TO A FULL STOP BEFORE CHANGING BELT.
- KEEP SAFETY GUARDS IN PLACE. DO NOT ALTER GUARD OR MACHINE IN ANYWAY. ANY ALTERATIONS TO GUARDS OR MACHINE COULD CAUSE SERIOUS INJURY.
- ALL BELT SANDERS SHOULD BE OPERATED IN A WELL-VENTILATED AREA. THE DUST CREATED WHEN SOME MATERIALS ARE SANDED CAN BE HARMFUL. DUST MASKS ARE RECOMMEND AS A PRACTICAL MEAN OF MINIMIZING DUST INHALATION. FUMES FROM OTHER OTHER SOURCES CAN ALSO CAUSES FIRES WHEN INTACT WITH SANDING SPARK.
- SPARKS CREATED BY SANDING SHOULD BE DIRECTED DOWNWARD AND AWAY FROM THE FACE AND BODY. DON NOT GRIND NEAR FLAMMABLE MATERIAL.
- ELECTRIC SANDING MACHINES ARE NOT INTENDED FOR USE IN OR NEAR WATER. THIS INCLUDES AN OPERATOR STANDING ON A WET FLOOR OR WORKING AROUND CONTAINERS OF WATER OR OTHER CONDUCTIVE LIQUIDS.
- CLEAN DUST COLLECTOR OUT AND DON'T MIX MATERIALS.

KI **KALAMAZOO** INDUSTRIES, INC. KALAMAZOO, MI

PH: (269) 382-2050

www.kalamazooind.com

WARNING!

TO REDUCE THE RISK OF FIRE OR SHOCK HAZARD,
DO NOT EXPOSE THIS EQUIPMENT TO RAIN, ANY LIQUID OR MOISTURE.

INSPECTION

If these goods are damaged in transit, the **DELIVERING TRANSPORTATION COMPANY** is required by law to make notation of damages on the freight bill. If in your opinion, there may be concealed damage, they are required to make an inspection after goods are unpacked. Transportation rates are made in proportion to damage. Therefore, the carrier and **NOT** the shipper should be charged with any loss or damage. Any claim should be filled with the delivering **TRANSPORTATION COMPANY. PLEASE DO NOT RETURN GOODS TO US WITHOUT OUR RGA NUMBER AND SHIPPING INSTRUCTIONS.**

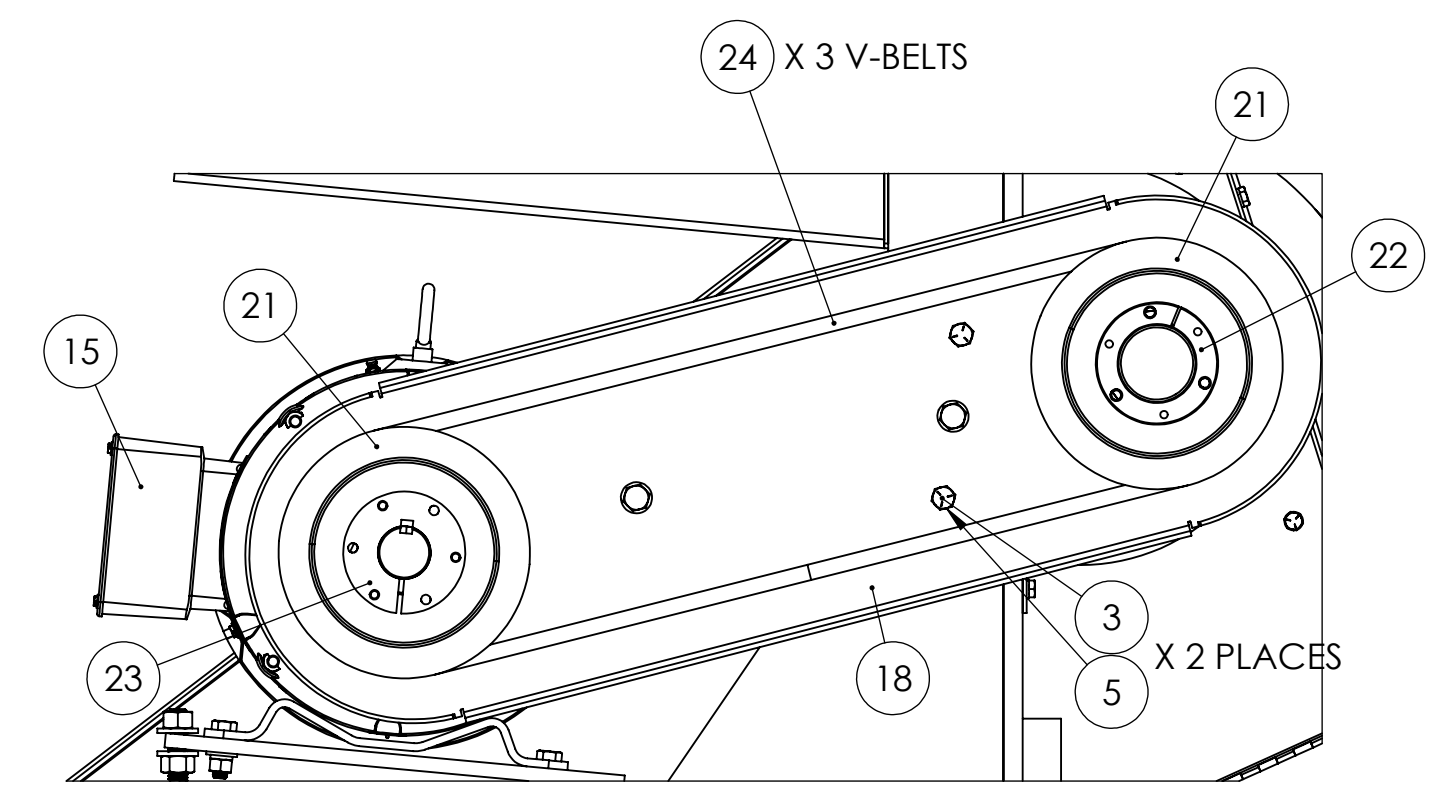
NOTE: SEE NEXT PAGE FOR RETURN POLICY AND WARRANTY.

IMPORTANT

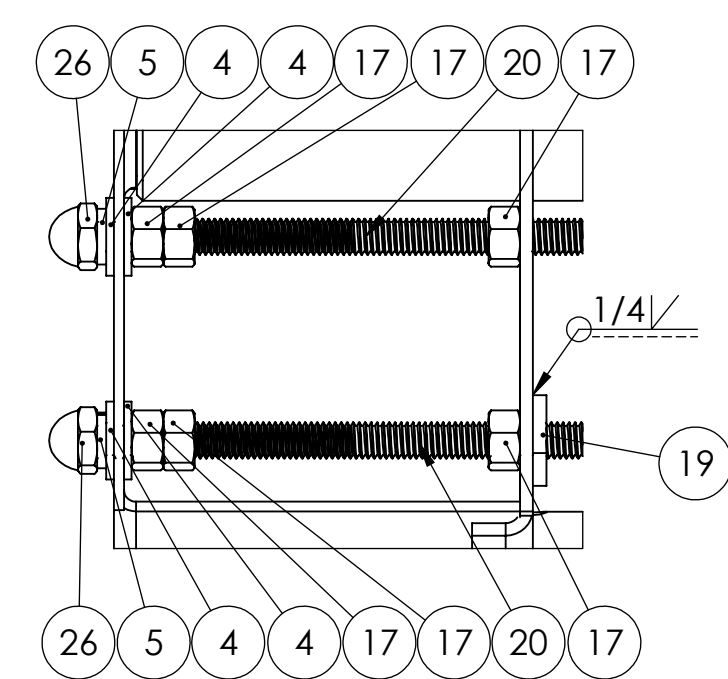
Read Operating Instructions before using equipment.

OPERATING INSTRUCTION

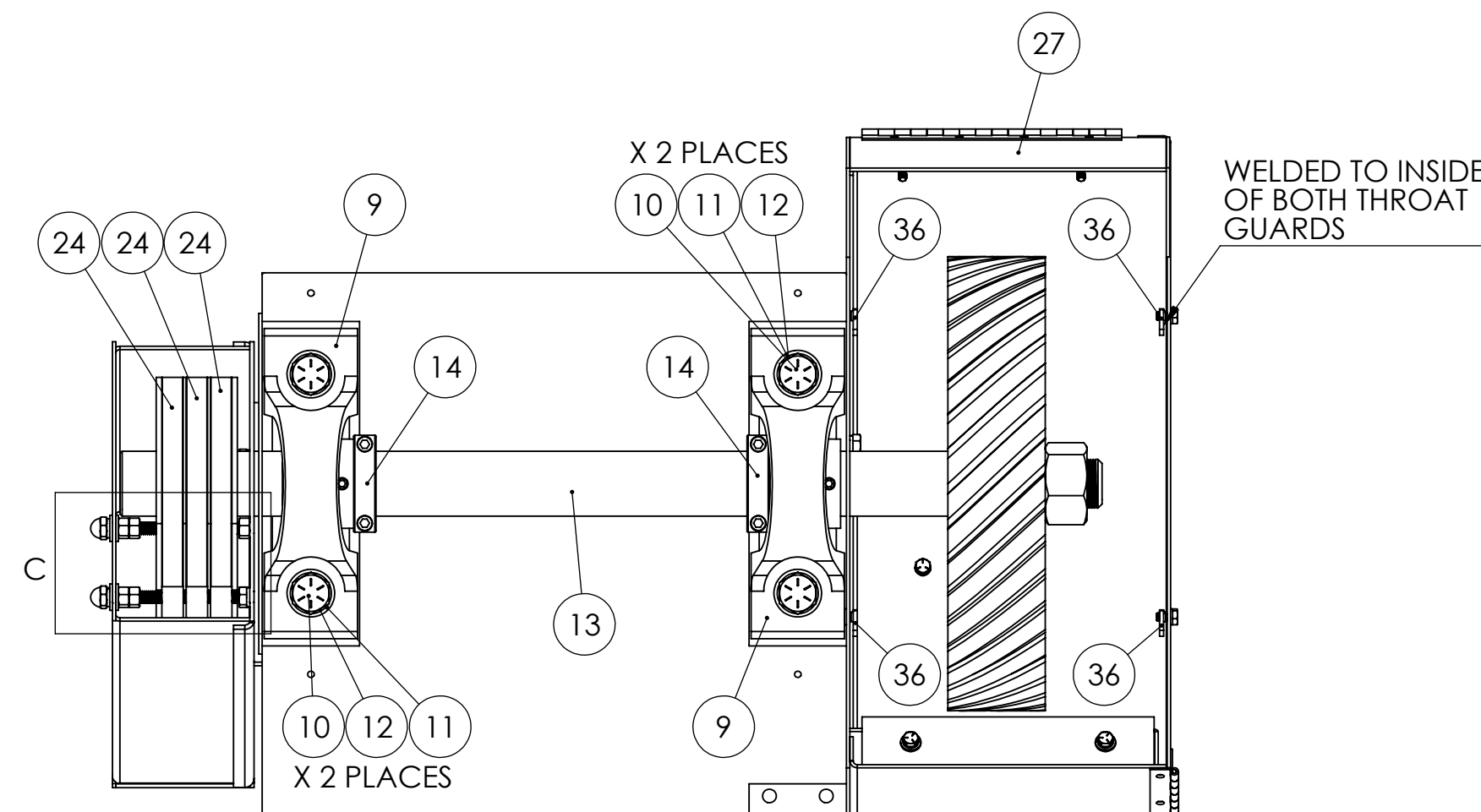
1. **Disconnect power** before making any adjustments.
2. Abrasive belt rotation is counter-clockwise. If the abrasive belt is lap spliced be sure of the correct belt rotation. Butt spliced belts bi-directional.
3. Belt tension is pre-set with internal spring **(44)**. No belt tension adjustment is required.
4. To change belt **disconnect power**, pull out tension handle **(45)** to compress. To decompress push in tension Handle.
5. Belt tracking- with power disconnected rotate belt by hand to center or "track" sanding belt. Rotate tracking knob **(59)** left and or right raises or lowers the idler shaft **(54)** to "track" the belt. Re-lock the tracking knob **(59)** to lock in belt tracking.



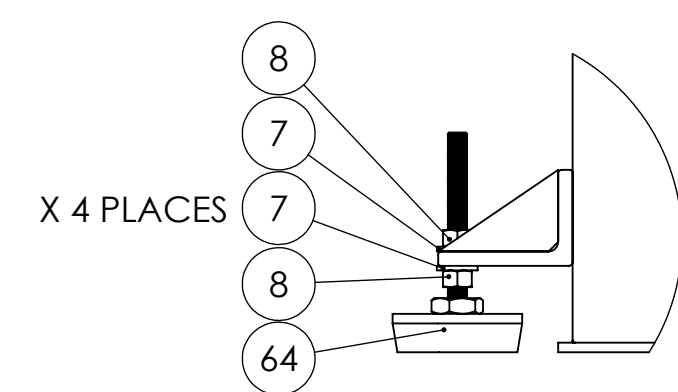
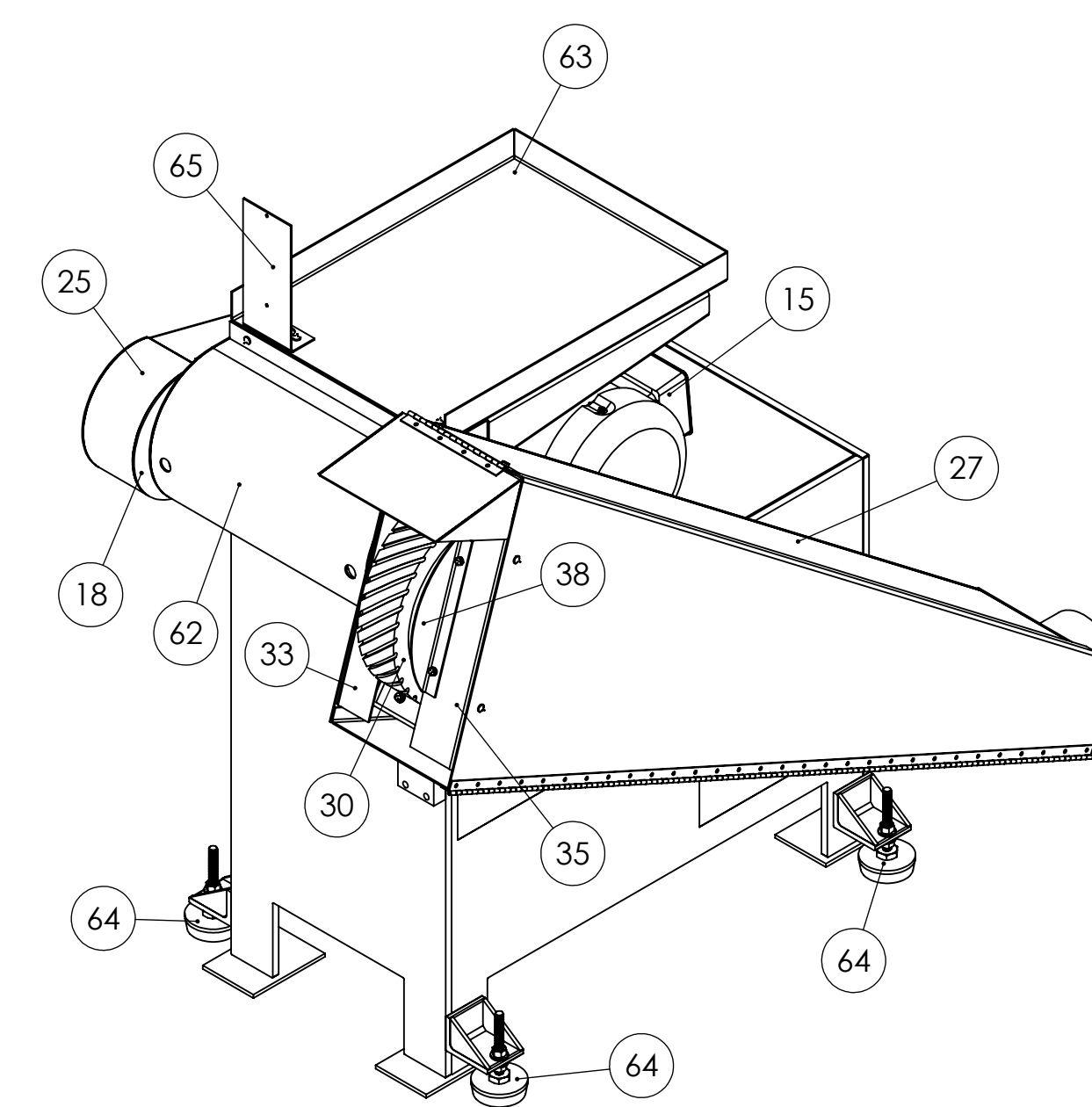
SIDE VIEW OF BELT GUARD BELTS AND PULLEYS



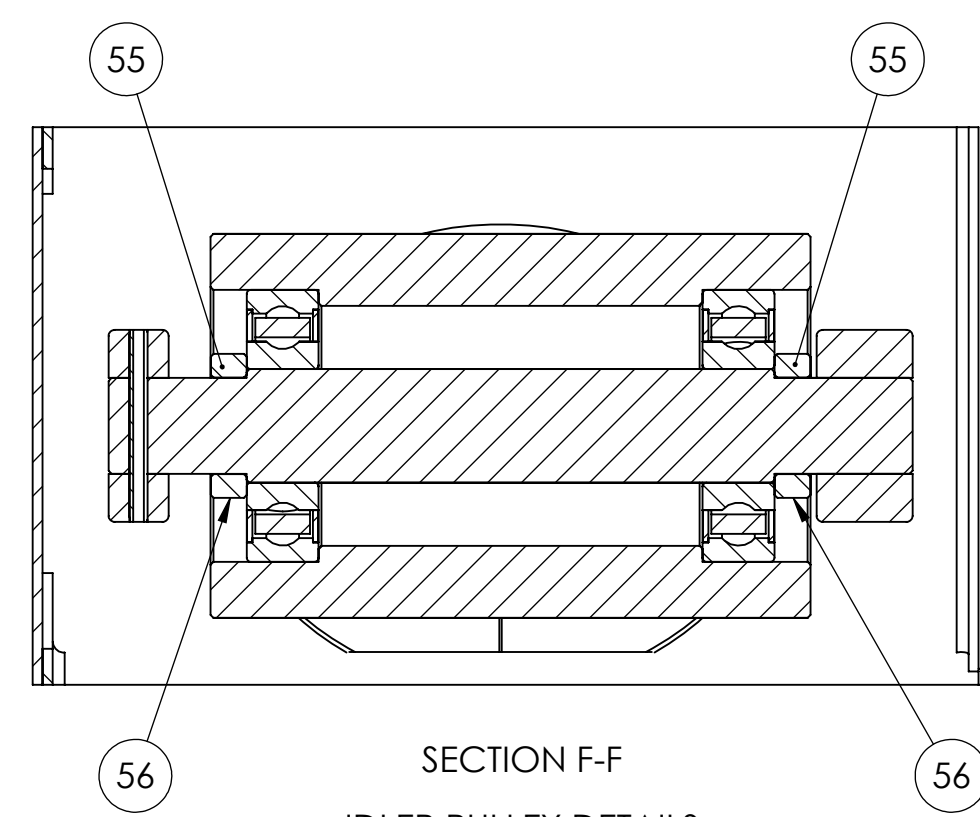
DETAIL C
SCALE 1 : 2
V-BELT GUARD MOUNTING DETAILS



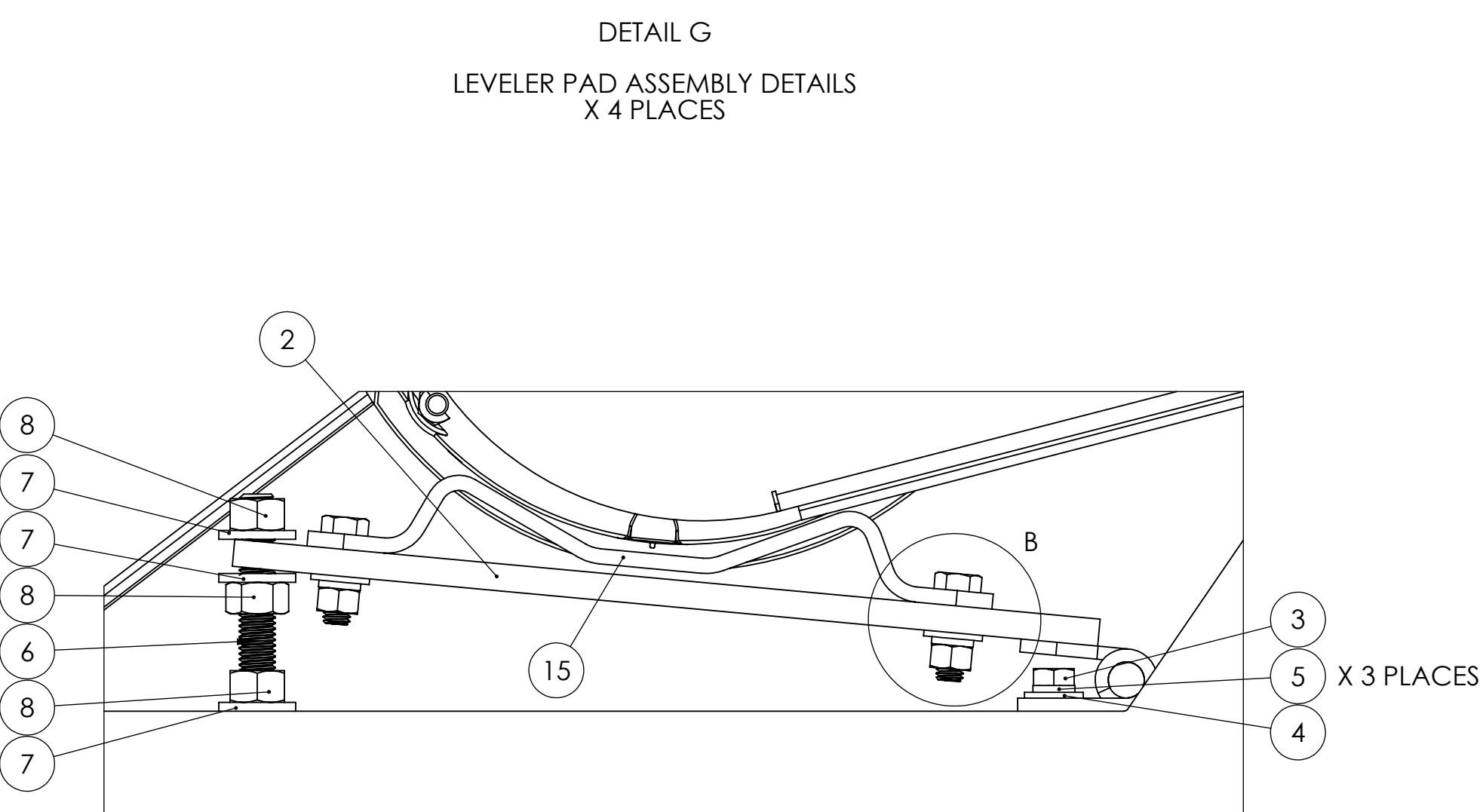
WHEEL, SPINDLE, AND SPINDLE BEARING DETAILS



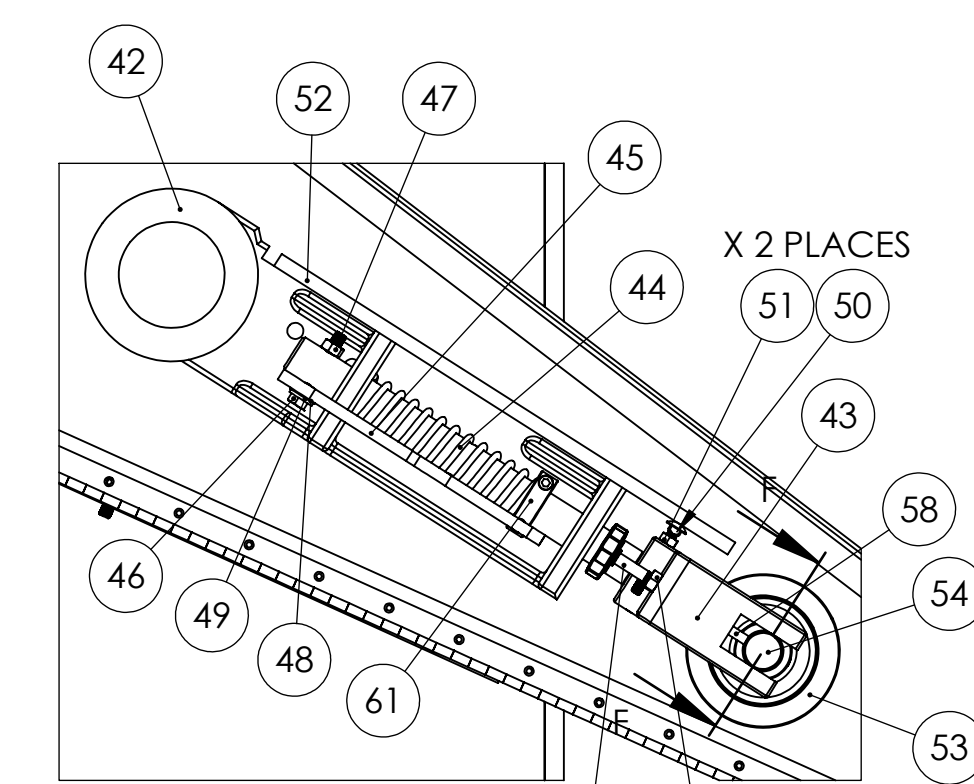
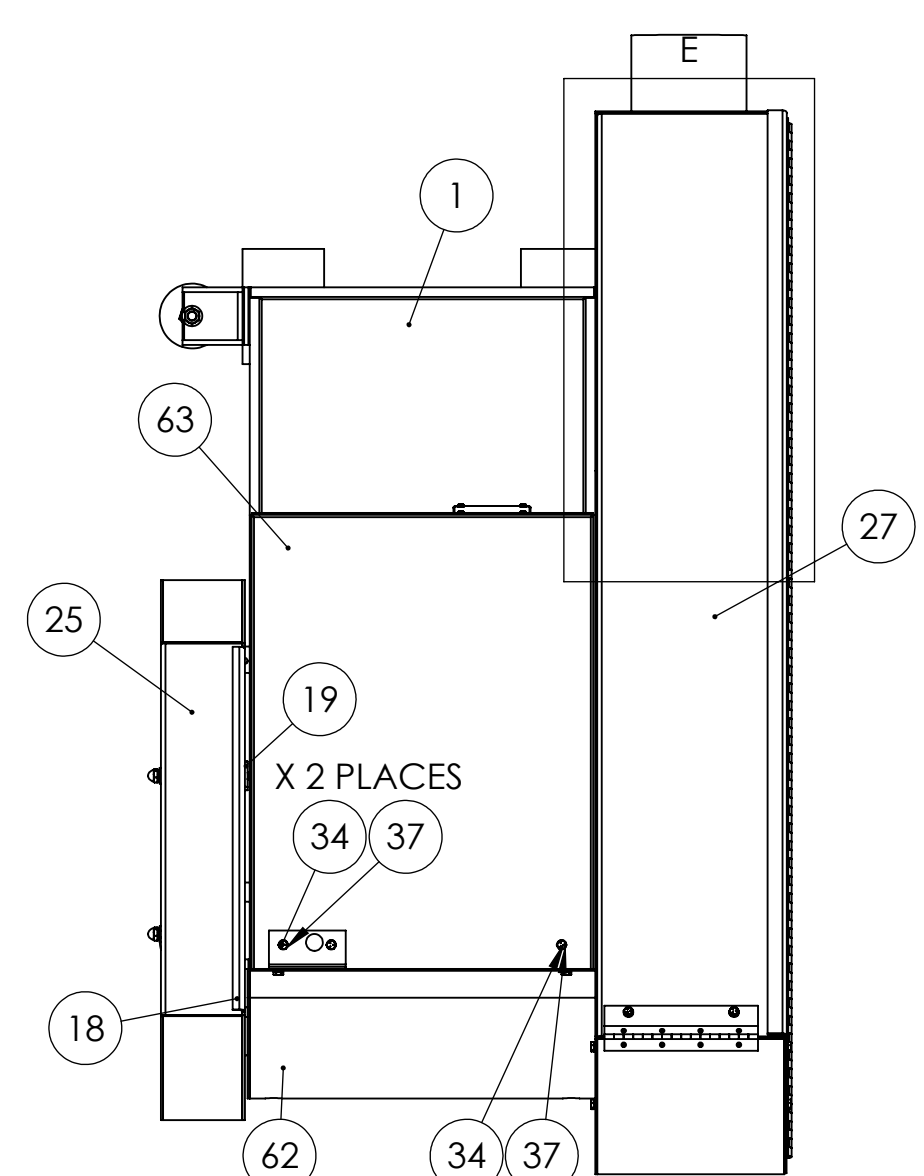
DETAIL G
LEVELER PAD ASSEMBLY DETAILS
X 4 PLACES



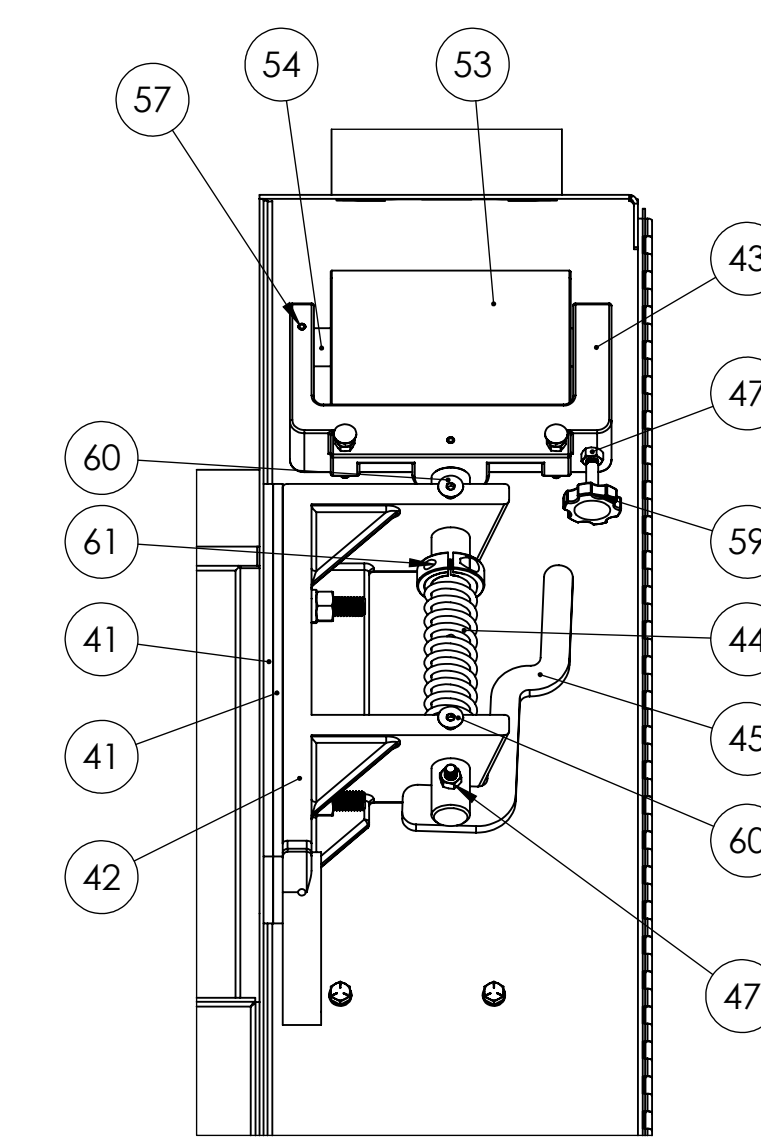
SECTION F-F
IDLER PULLEY DETAILS
SCALE 1 : 2



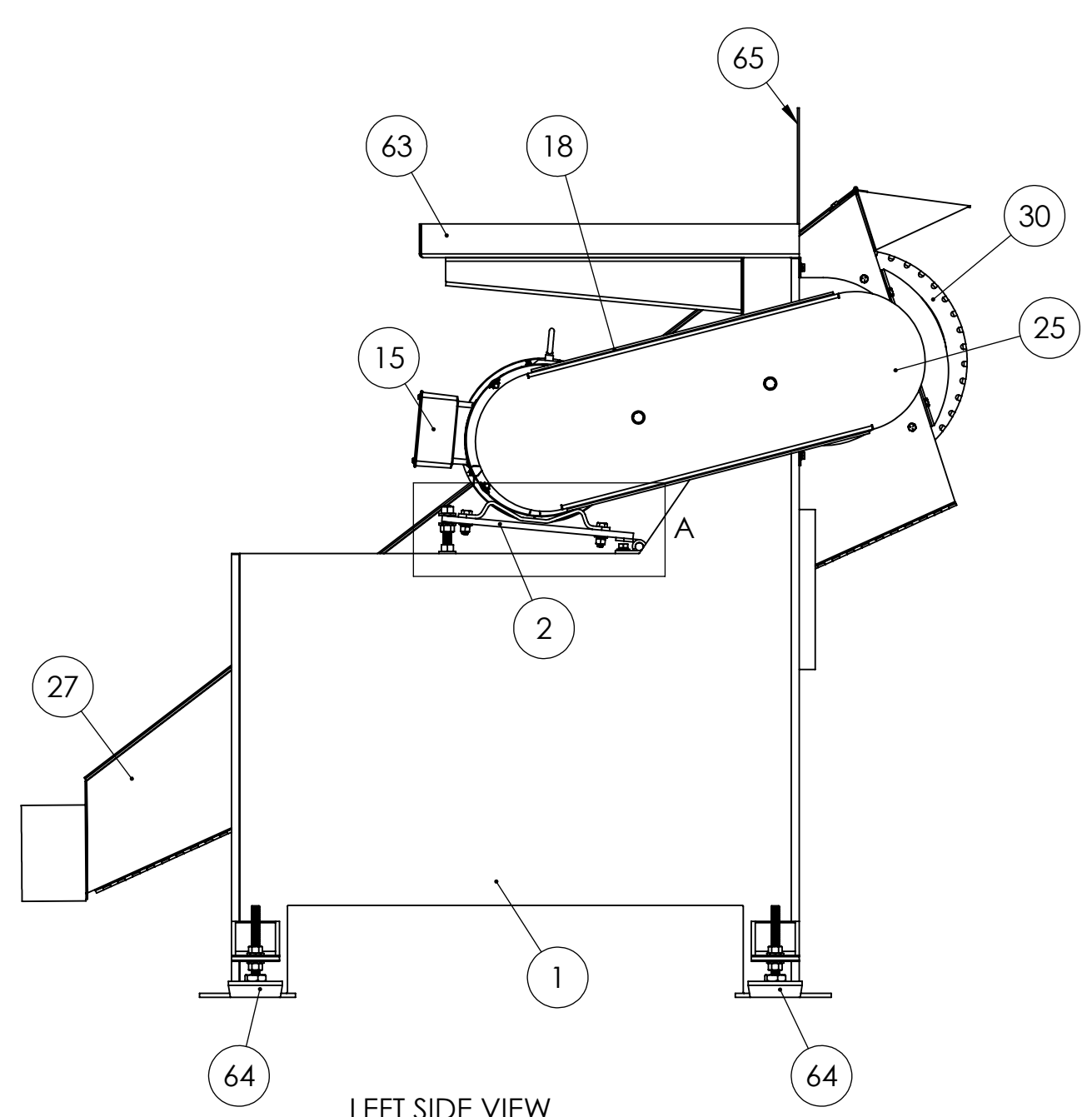
DETAIL A
SCALE 1 : 2
MOTOR MOUNT BRACKET DETAILS



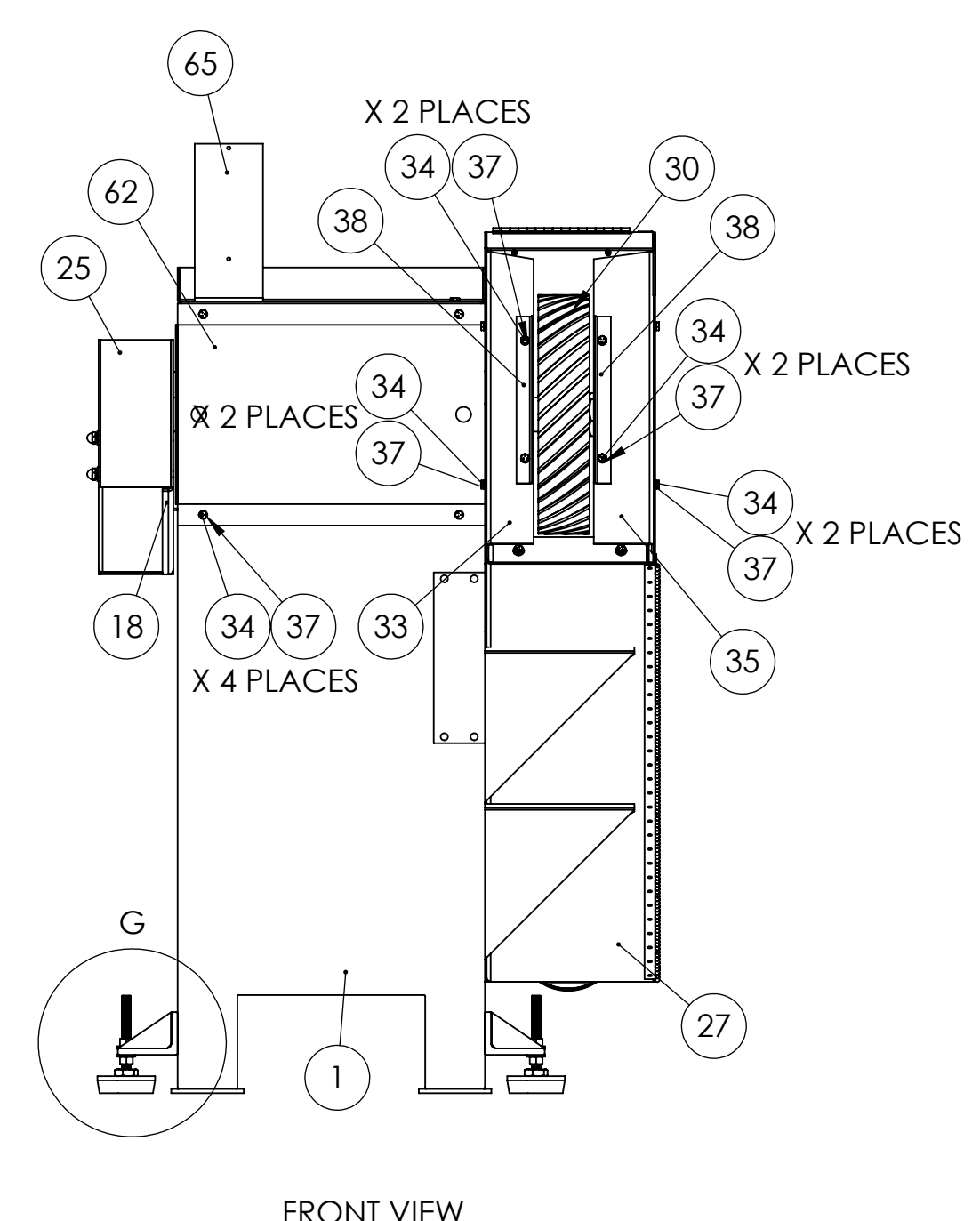
DETAIL D
SIDE VIEW OF IDLER ASSEMBLY



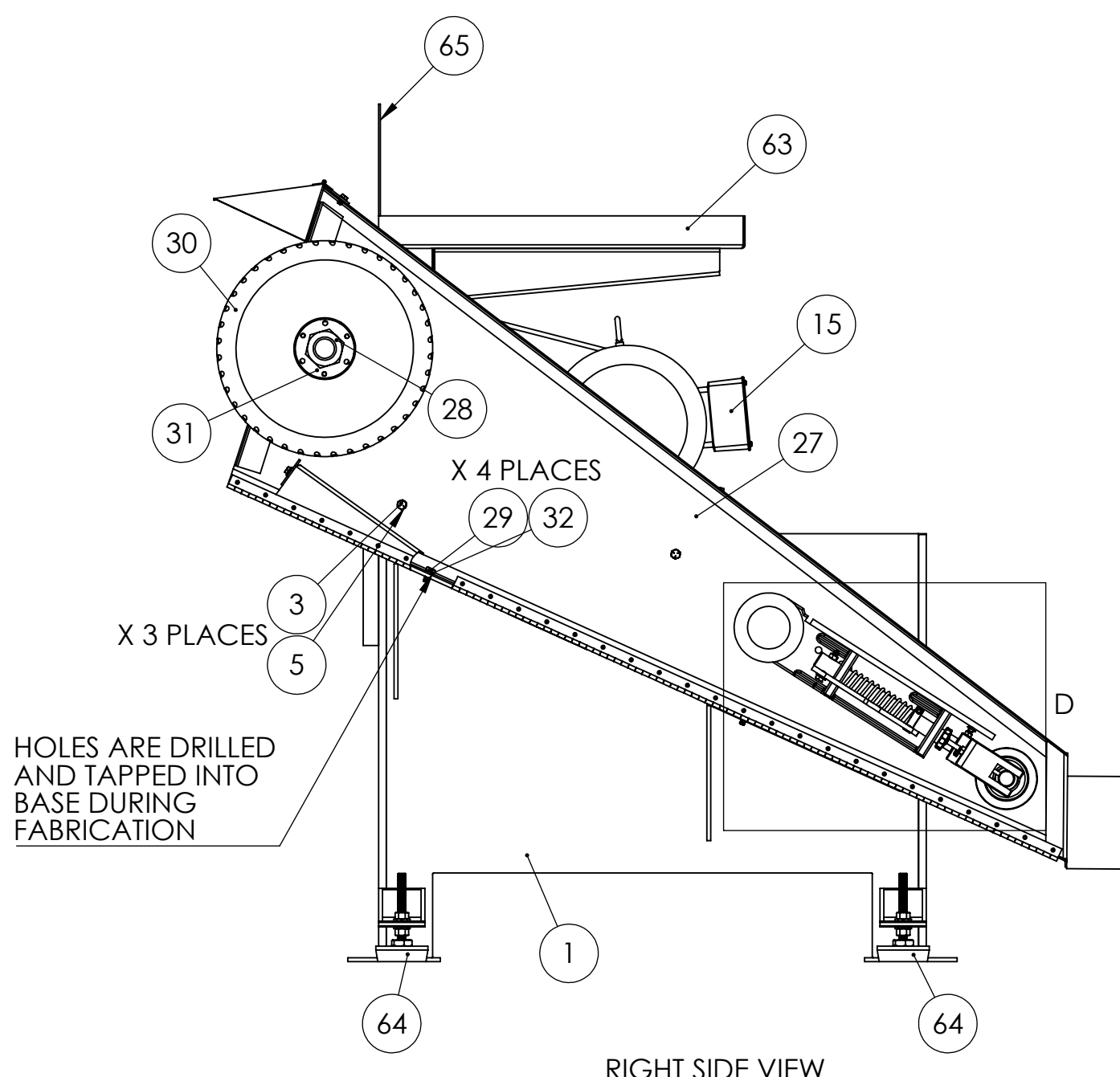
DETAIL E
TOP VIEW OF IDLER ASSEMBLY



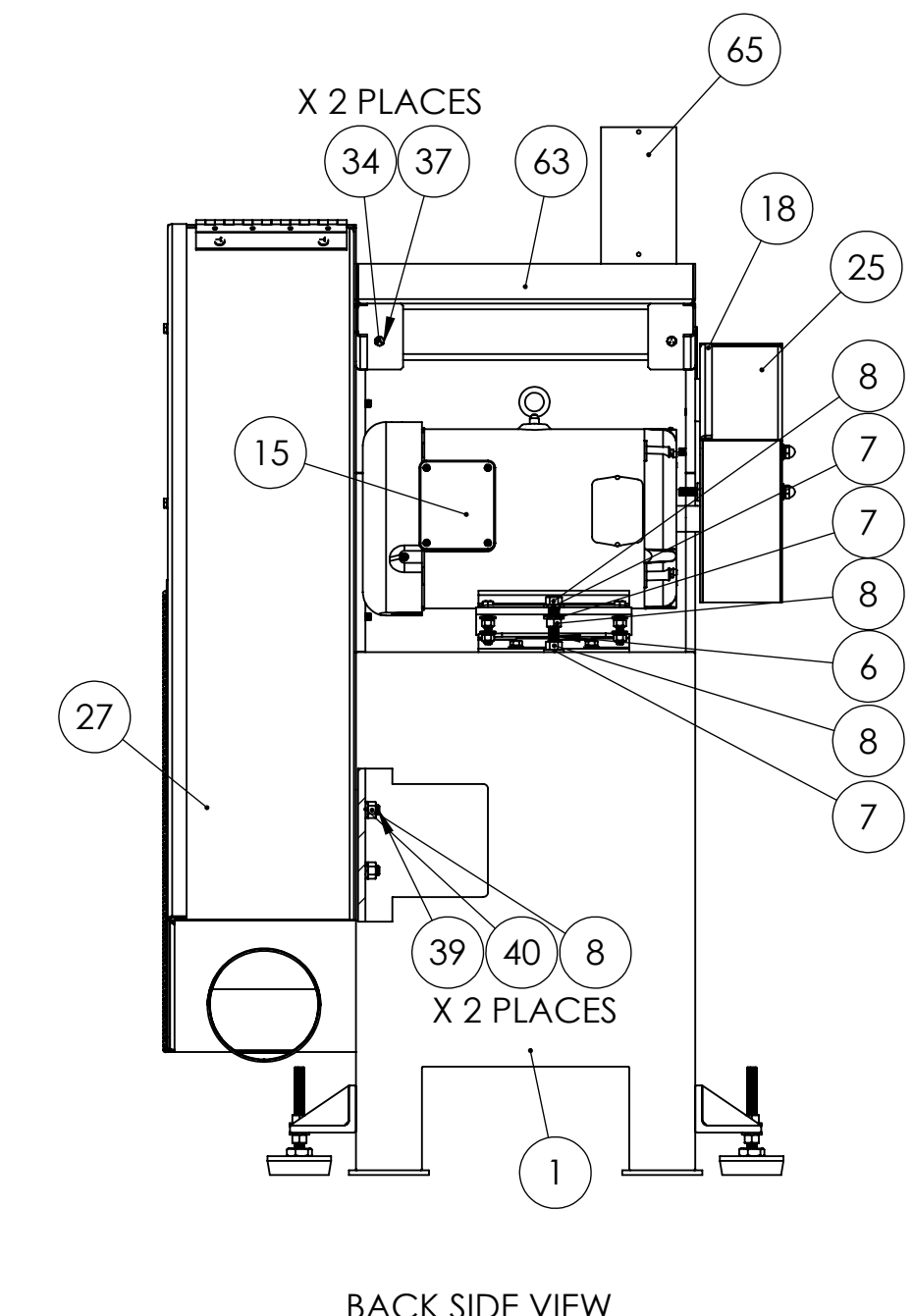
LEFT SIDE VIEW



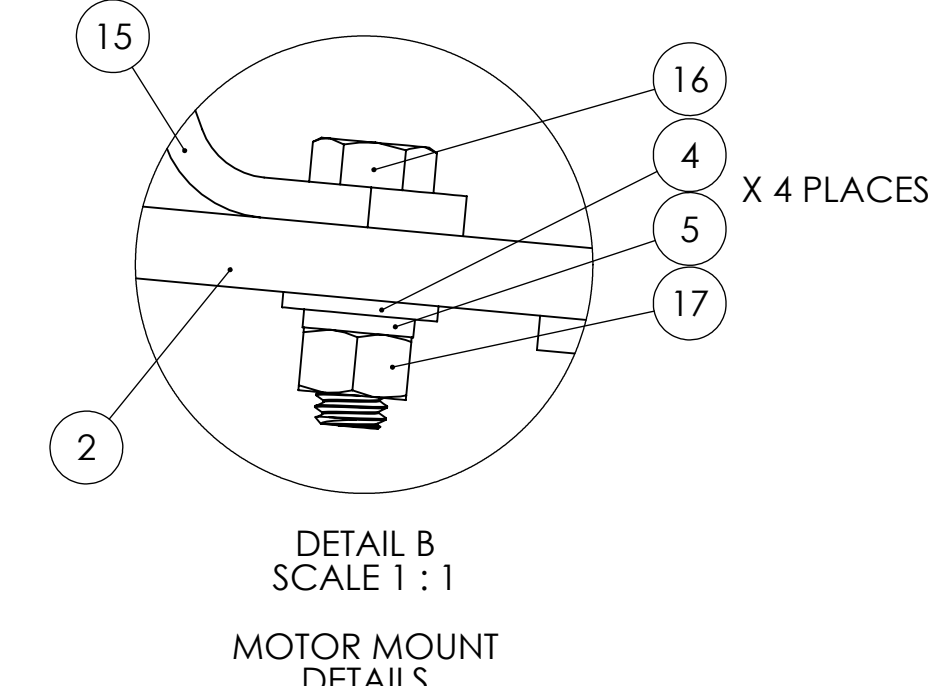
FRONT VIEW



RIGHT SIDE VIEW



BACK SIDE VIEW



DETAIL B
SCALE 1 : 1
MOTOR MOUNT DETAILS

ITEM NO.	PART NUMBER	DESCRIPTION	QTY.
1	716-029PLATE	BG14 STAND ASSEMBLY, MADE FROM 1/2 INCH PLATE	1
2	486-078	MOTOR MOUNT ASSEMBLY FOR BG14 AND BG214	1
3	HHC5037016	3/8-16 X 1 HHCS GR5 Z	8
4	UFWZ037	3/8 USS F/W Z	11
5	SLWZ037	3/8 SPLIT L/W Z	14
6	RND0.5 13THRDRODX3.75	3-3/4 INCHES OF RND-1/2-13 THRD ROD	1
7	UFWZ050	1/2 USS F/W Z	11
8	FHN5050	1/2-13 FHN GR5 Z	15
9	044-037	PILOW BLOCK BEARING FOR BG14 AND BG214	2
10	HHC8076032	3/4-16 X 2 HHCS GR8 YEL/ZN	4
11	SFW8075	3/4 SAE F/W GR8 YL/ZN	4
12	SLW8075	3/4 L/W GR8 YL/ZN	4
13	701-016	DRIVE SPINDLE FOR BG14 WITH WIDER GUARD	1
14	SC200D	SC200D 2" SPLIT COLLAR	2
15	486-019	10HP MOTOR FOR K16-18, KM16-18, BG14	1
16	HHC5037020	3/8-16 X 1-1/4 HHCS GR5 Z	4
17	FHN5037	3/8-16 FHN GR5 Z	10
18	342-101A	INNER V BELT GUARD FOR BG14	1
19	BUCKQN3316	3/8-16 WELD NUT STEEL TAB PROJECTION	1
20	RND0.375-16THRDRODX6.	6 INCHES OF RND-3/8-16 THRD ROD	2
21	3862SD	SPINDLE AND MOTOR SHEAVE FOR BG14	2
22	049-117	SPINDLE PULLEY BUSHING FOR BG14	1
23	049-072	MOTOR PULLEY BUSHING FOR BG214	1
24	051-133	V BELT FOR BG14	3
25	342-101	OUTER V-BELT GUARD FOR BG14	1
26	CPNZ037	3/8-16 CAP NUT NICKEL	2
27	342-110	BELT GUARD FOR BG14	1
28	FHN5151	Medium-Strength Steel Hex Nut	1
29	HHC5031012	5/16-18 X 3/4 HHCS GR5 Z	4
30	936-027	14 DIA X 3 WIDE X 1.25 BORE C130 STYLE CONTACT WHEEL	1
31	049-011	BUSHING FOR K20FS AND K26 SPINDLE PULLEY	1
32	SLWZ031	5/16 SPLIT L/W Z	4
33	342-110THROAT-L.H.3INCH	L.H. THROAT GUARD (3 INCH WHEEL) FOR BG14 BELT GUARD	1
34	HHC5025008	1/4-20 X 1/2 HHCS GR5 Z	17
35	342-110THROAT-R.H.3INCH	R.H. THROAT GUARD (3 INCH WHEEL) FOR BG14 BELT GUARD	1
36	BUCKSN2113	1/4-20 TAB WELD SPOT NUT OFFSET	4
37	SLWZ025	1/4 SPLIT L/W Z	17
38	342-110B	WHEEL, SIDE GUARD (UNIVERSAL) FOR BG14 BELT GUARD	2
39	IDLER ASSEMBLY STUD	4 INCHES OF 1/2-13 THREADED ROD TO ATTACH IDLER ASSEMBLY TO BG214 STAND	2
40	SLWZ050	1/2 SPLIT L/W Z	4
41	IDLER ASSEMBLY SPACER	SPACER FOR IDLER ASSEMBLY FOR BG14 AND BG214	2
42	291-004	CAST IRON FRAME FOR S6M, S612 SANDERS	1
43	960-006YA	YOKE WITH TENSION SHAFT FOR S6 SANDERS	1
44	697-035	BG14 IDLER BELT TENSION SPRING	1
45	455-002	TENSION RELEASE LEVER FOR BG14 TRACKING HEAD	1
46	HHT5031032	5/16-18X2 HEX HEAD TAP BOLT GR5 ZINC	1
47	FHN5031	5/16-18 FHN GR5 ZINC	2
48	BWWA031	5/16 BOWED SPRING WASHER 21/64	1
49	UFWZ031	5/16 USS F/W Z	1
50	CRBZ025032	1/4-20 X 2 CARRIAGE BOLT ZINC PLATED	2
51	FHN5025	1/4-20 FHN GR5 Z	2
52	563-002	S6 BELT PLATEN	1
53	560-016S	ALUMINIUM IDLER PULLEY W STEEL JACKET FOR 6" SANDER. INCLUDES PULLEY AND BEARINGS	1
54	701-019N	S6 IDLER SPINDLE- NEW STYLE	1
55	123-016	S6 IDLER PULLEY LOCK COLLAR	2
56	SSKA025004	1/4-20 X 1/4 SOC SET KNURL PT.	2
57	ROLA018032	3/16 X 2 ROLL PIN	1
58	DOWA025032	1/4 X 2 DOWEL PIN	1
59	441-014	TRACKING KNOB ASSEMBLY	1
60	FSCA031016	5/16-18 X 1 FSHCS	2
61	SC100D	SC100D 1" 2PC SPLIT COLLAR	1
62	342-114	SPINDLE BEARING GUARD FOR BG14	1
63	716-029TRAY	TOP TRAY FOR BG14 WITH PLATE FRAME	1
64	455-016	LEVELER PAD ASSEMBLY	4
65	041-057	SWITCH BRACKET FOR K12-K14	1

UNLESS OTHERWISE SPECIFIED:
DIMENSIONS ARE IN INCHES
TOLERANCES:
FRACTIONS ± .005
ANGULAR ± .031
THREE PLACE DECIMAL ± .001
INTERFERENCE GEOMETRIC TOLERANCES PER ASME Y14.5-2009
SURFACE FINISH: R .8
DIMENSIONS ARE IN INCHES
TOLERANCES:
FRACTIONS ± .005
ANGULAR ± .031
THREE PLACE DECIMAL ± .001
INTERFERENCE GEOMETRIC TOLERANCES PER ASME Y14.5-2009
SURFACE FINISH: R .8

DATE: _____
NAME: _____
TITLE: **BG14 WITH STAND MADE FROM PLATE**
SCALE: 1:5 WEIGHT: _____ SHEET 1 OF 1

PROPRIETARY/CONFIDENTIAL
THE INFORMATION CONTAINED IN THIS DRAWING IS THE SOLE PROPERTY OF KALAMAZOR. IT IS TO BE USED FOR THE MANUFACTURE OF THE PART OR ASSEMBLY SHOWN HEREIN. NO PART OF THIS DRAWING IS TO BE REPRODUCED OR TRANSMITTED IN ANY FORM OR BY ANY MEANS, ELECTRONIC OR MECHANICAL, INCLUDING PHOTOCOPYING, RECORDING, OR BY ANY INFORMATION STORAGE AND RETRIEVAL SYSTEM, WITHOUT THE WRITTEN PERMISSION OF KALAMAZOR.

APPICATION: _____
USED ON: _____
FINISH: _____
DO NOT SCALE DRAWING