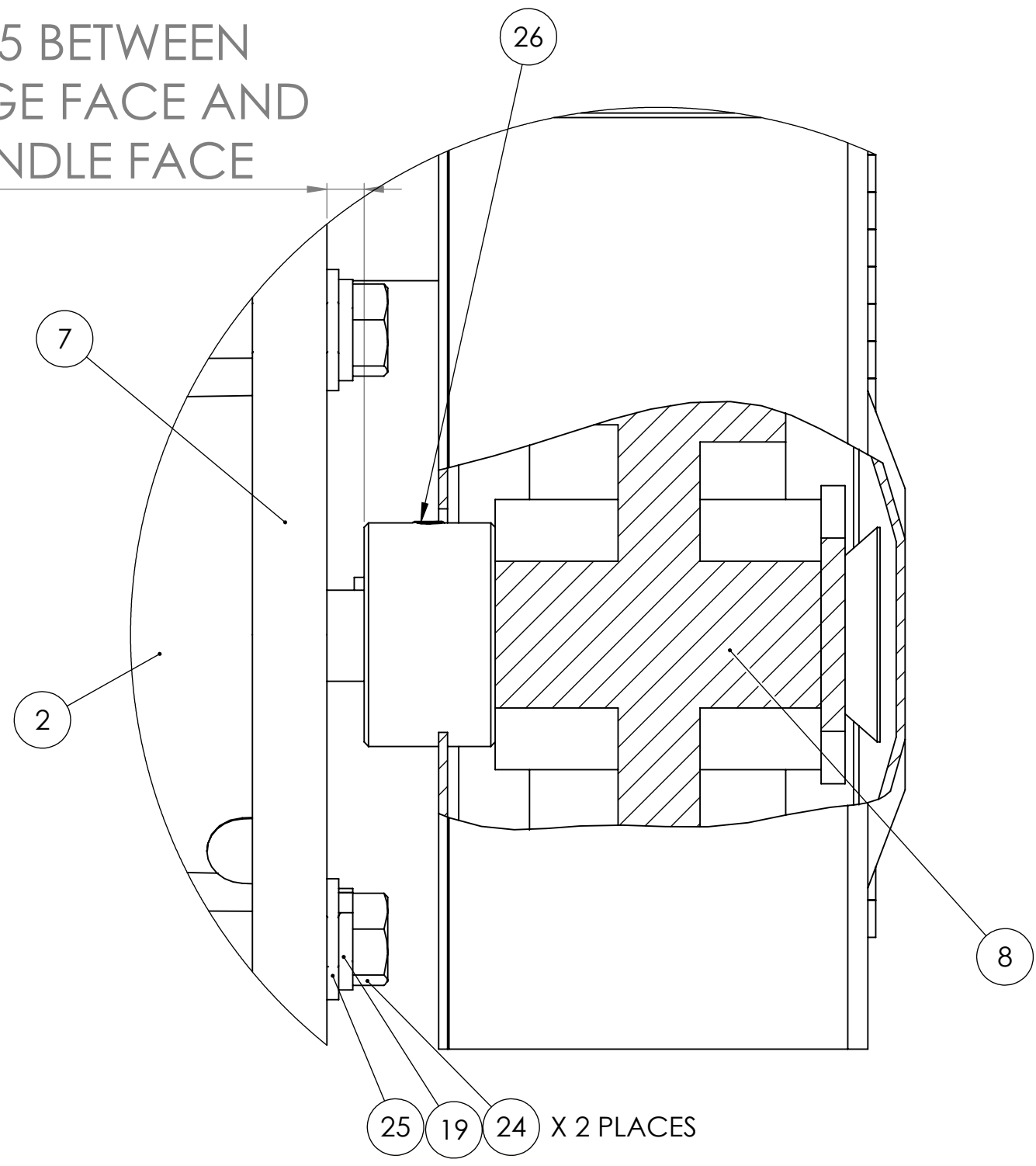
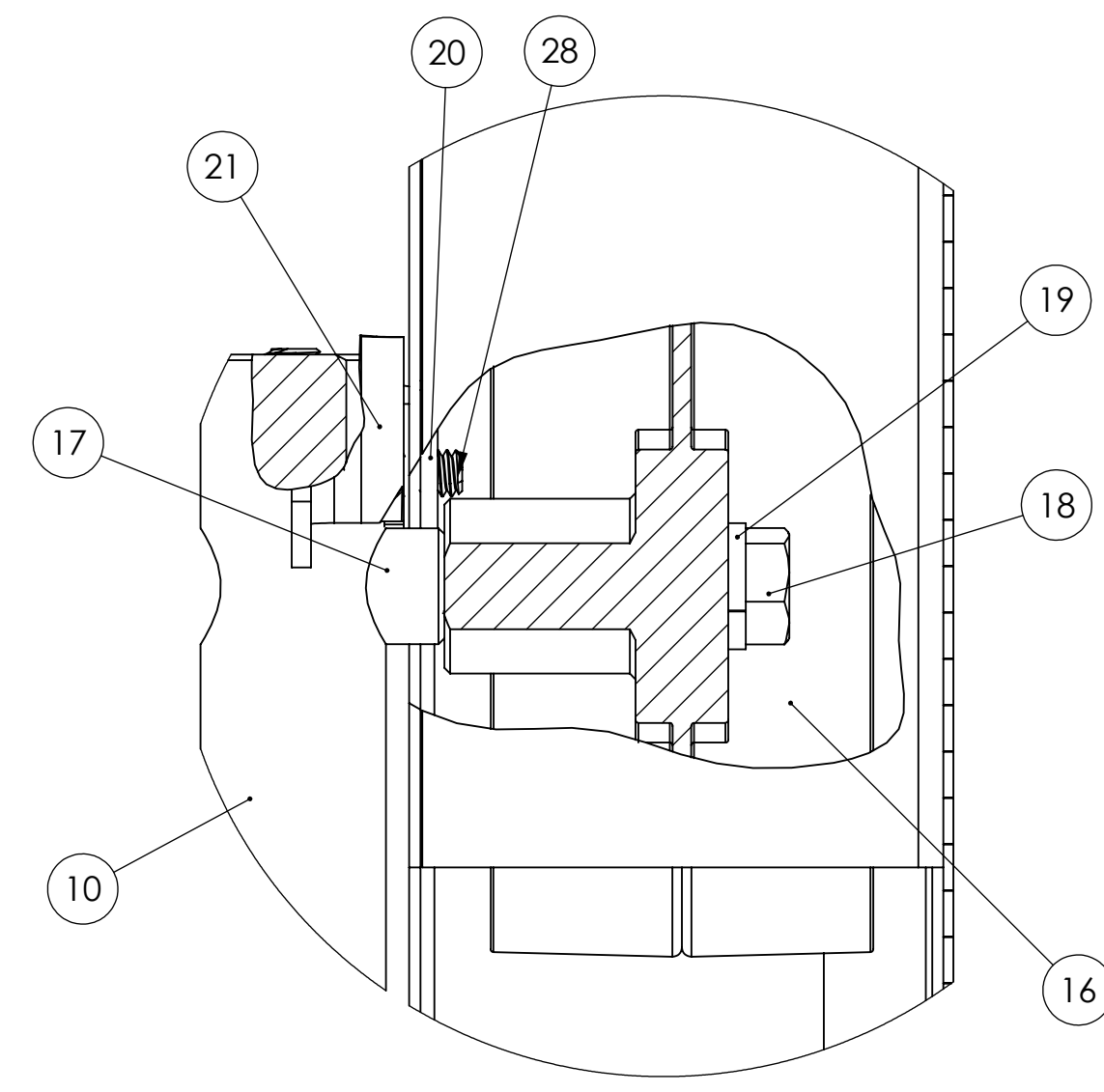


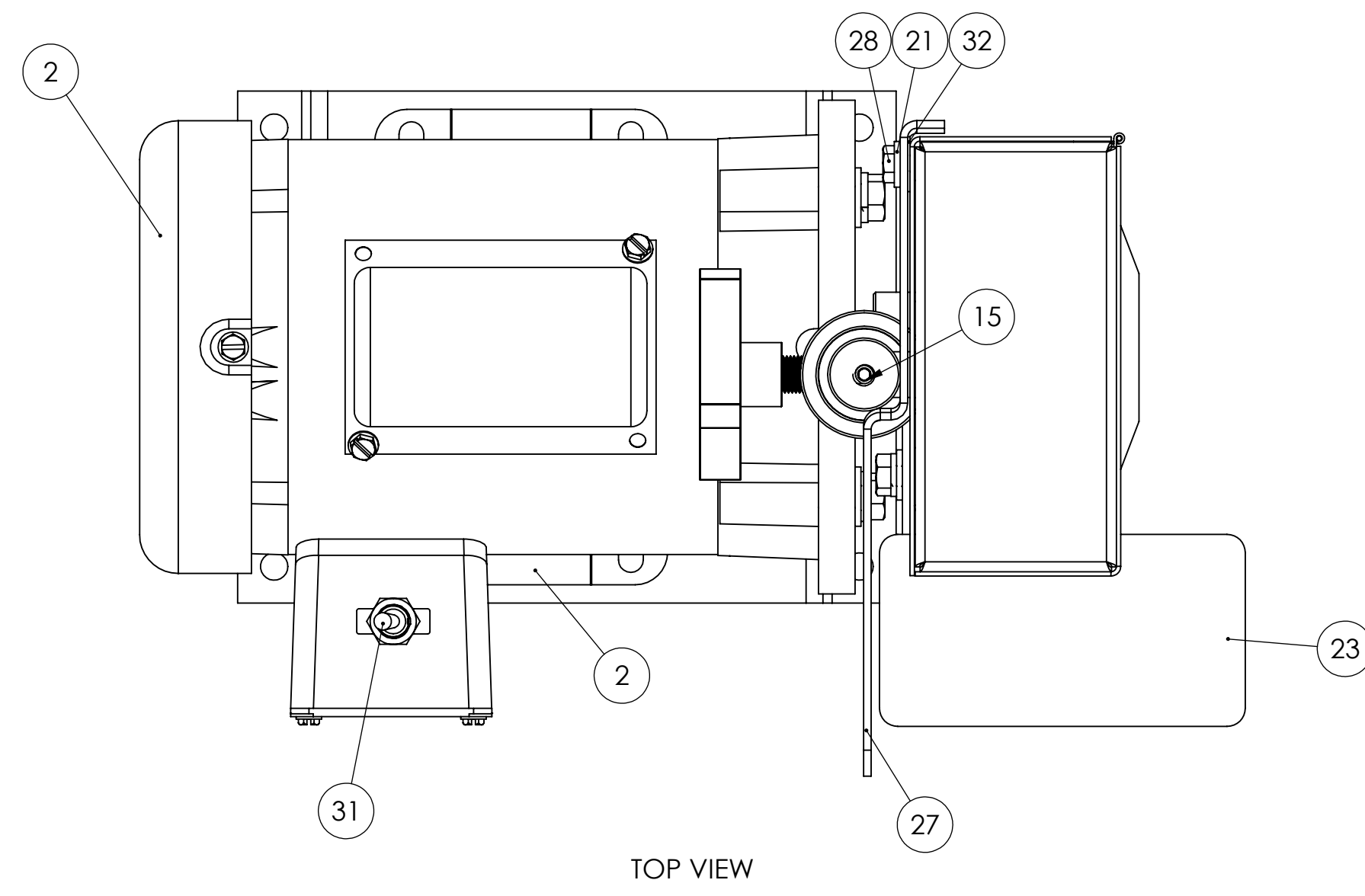
0.25 BETWEEN
FLANGE FACE AND
SPINDLE FACE



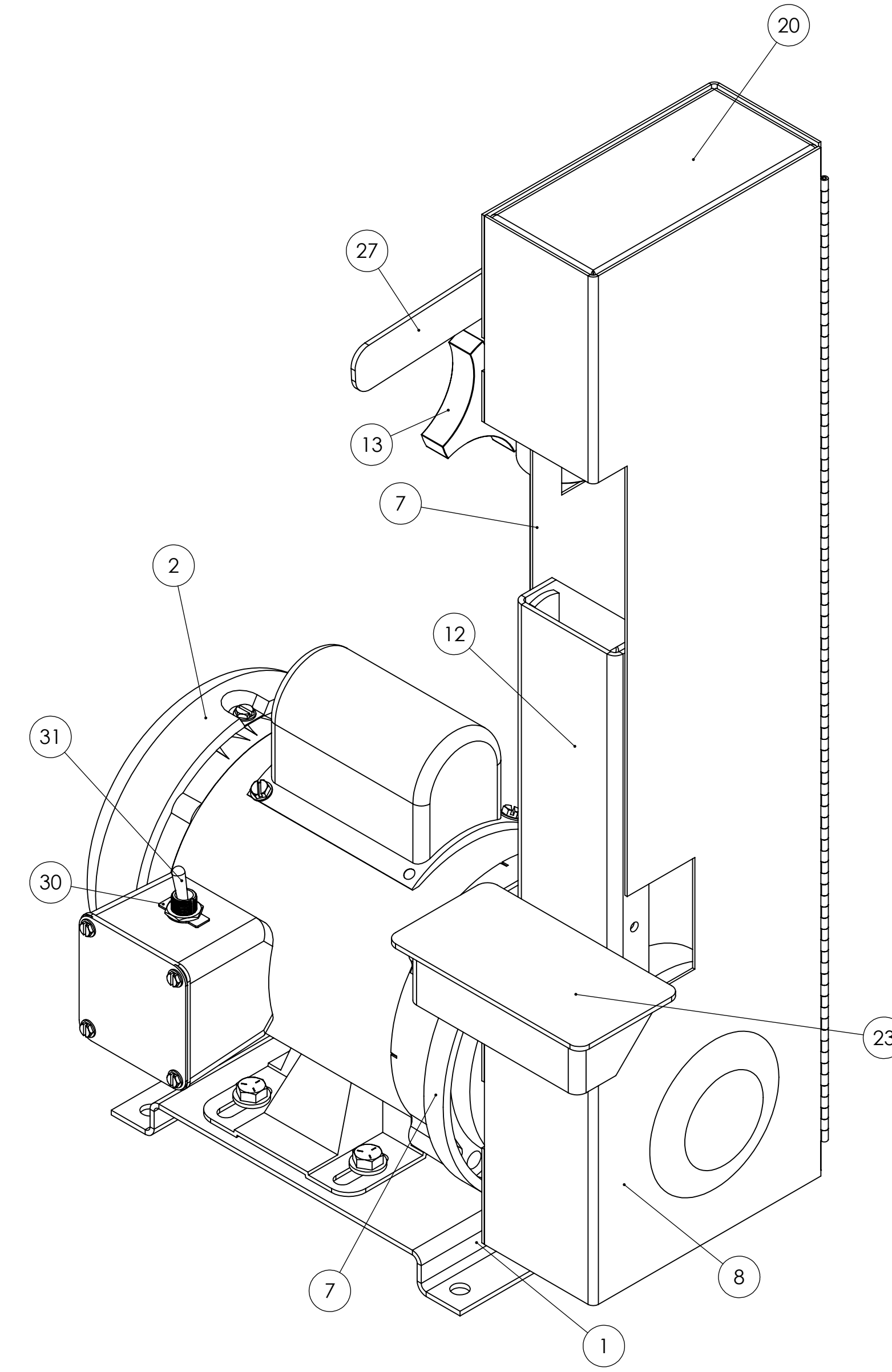
DETAIL A
SCALE 1 : 1
DRIVE PULLEY DETAIL



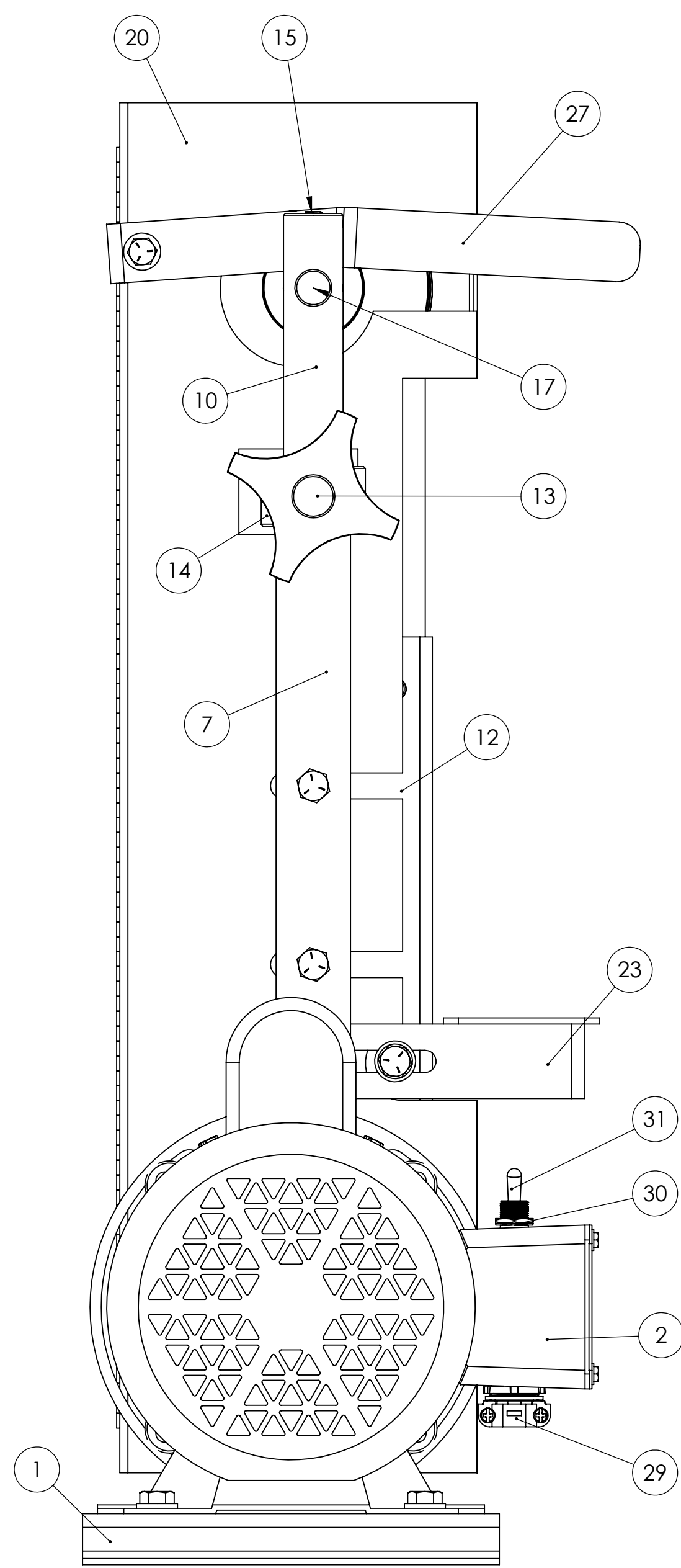
DETAIL C
SCALE 1 : 1
IDLER PULLEY DETAIL



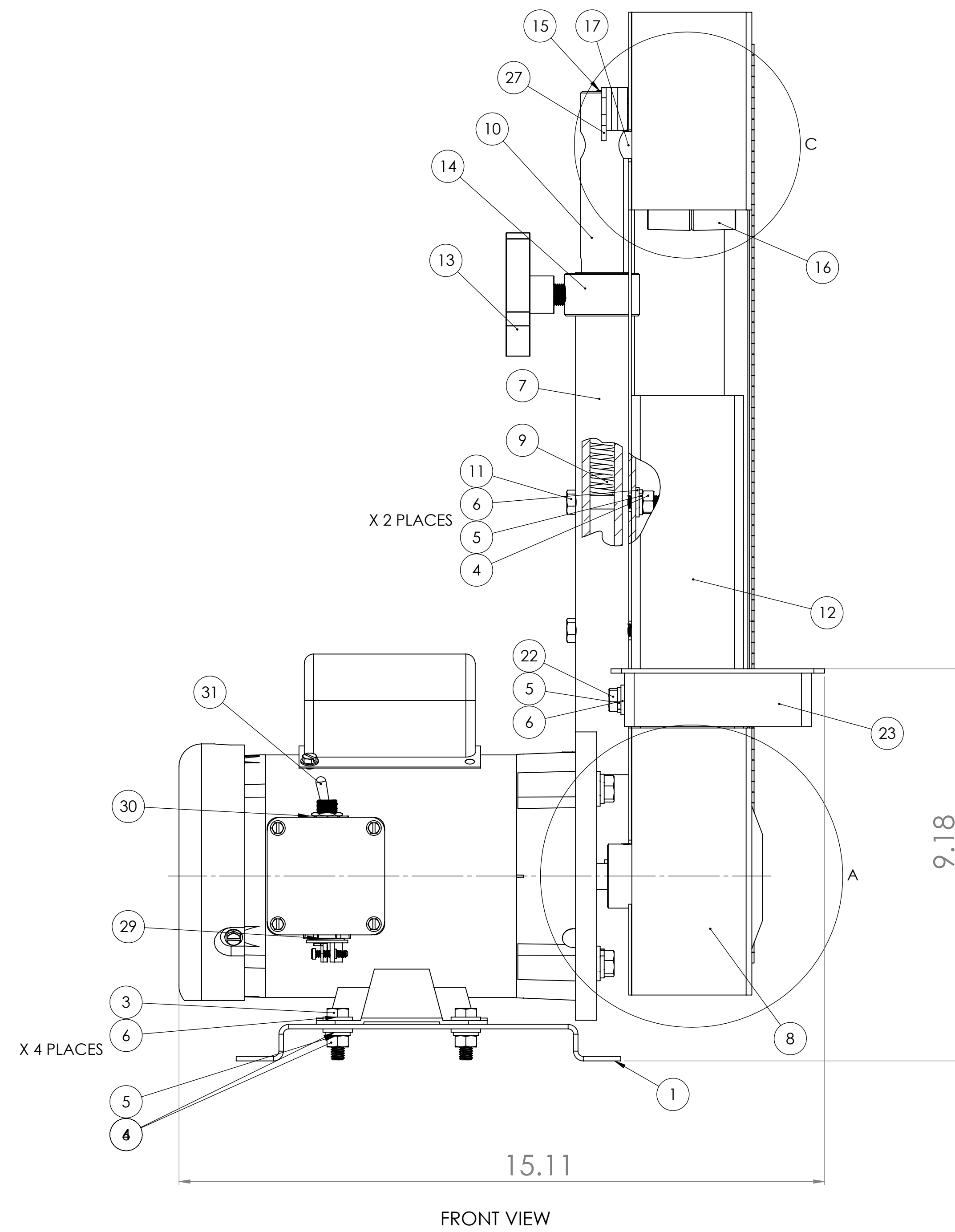
TOP VIEW



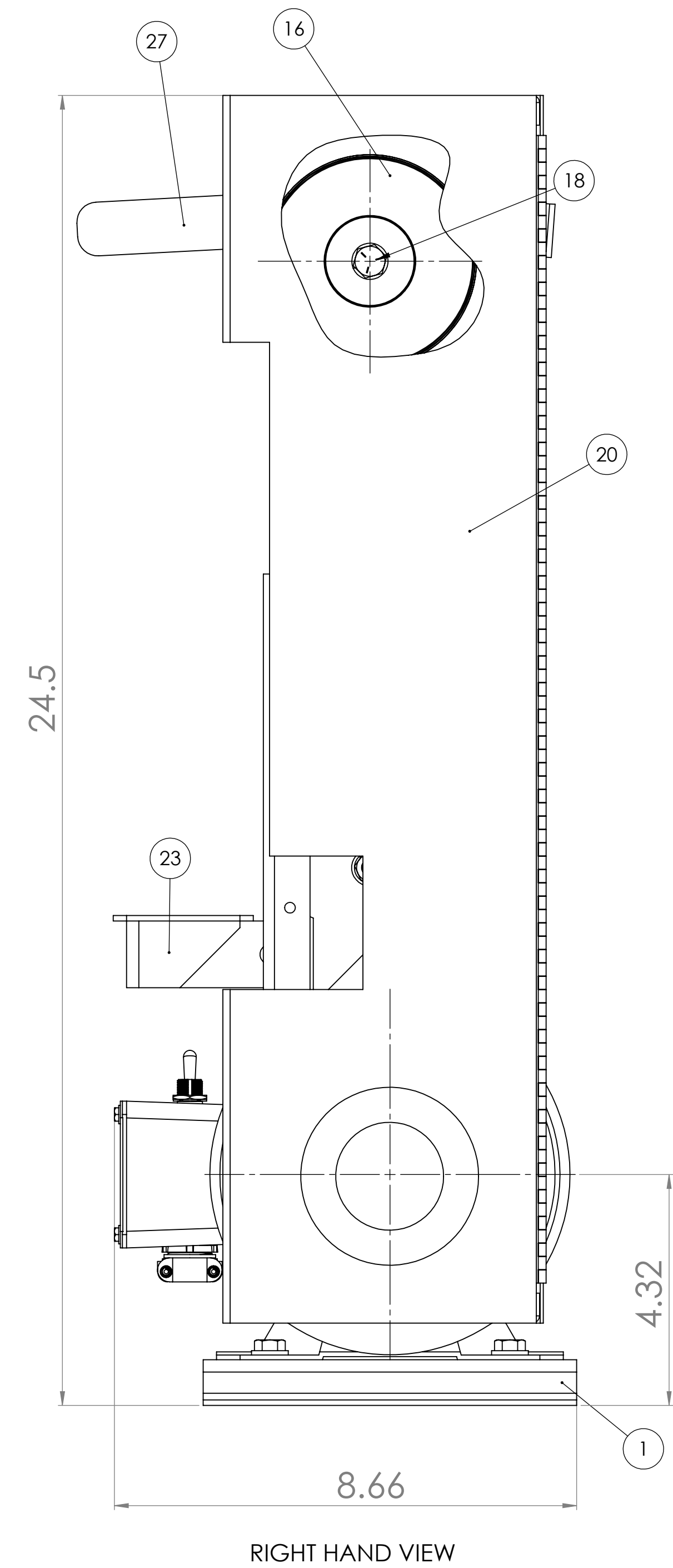
ITEM NO.	PART NUMBER	DESCRIPTION	QTY.
1	829-053A	TOP BASE FOR 2FSM (NEW STYLE)	1
2	484-022	1/2HP MOTOR FOR 2FSM, S4S AND S612V VAC MOTOR	1
3	HHC5031016	5/16-18 X 1 HHCS GR5 Z	4
4	FHN5031	5/16-18 FHN GR5 ZINC	6
5	SLW2031	5/16 SPLT L/W Z	7
6	UFW2031	5/16 USS F/W Z	11
7	832-023	TUBE AND RING ASSEMBLY FOR 2FSM AND DS10-2M	1
8	936-007	DRIVE PULLEY WITH HUB FOR 2FSM AND DS10-2M NEW STYLE	1
9	697-013	TENSION SPRING FOR 2FS, 2FS72, 2FSM, BG142, 2FS72M, K12-14B	1
10	645-008	TENSION ROD FOR 2FS, 2FSM, 2FS72, 2SK7 SANDERS	1
11	HHC5031032	5/16-18 X 2 HHCS GR5 Z	2
12	550-007	STANDARD PLATEN FOR 2 X 48 SANDERS	1
13	441-011	TRACKING KNOB FOR 2FS, 2FS72, 2FSM, 2SK7 SANDERS	1
14	123-004	TRACKING COLLAR FOR 2FS, 2FS72, 2FSM, 2SK7, BG142	1
15	SSKA031006	5/16-18 X 3/8 SOC SET KNURL PT.	1
16	936-030	STEEL IDLER PULLEY, NEW STYLE FOR 2FS, 2FSM, 2SK7	1
17	004-006	ADAPTOR FOR IDLER PULLEY FOR 2FSM, 2FS, 2SK7	1
18	HHC5037040	3/8-16 X 2-1/2 HHCS GR5 Z	1
19	SLW2037	3/8 SPLT L/W Z	3
20	342-084	2 INCH GUARD, FULL BOXED OSHA FOR 2FSM SANDER	1
21	UFW2025	1/4 USS F/W Z	1
22	HHC5031012	5/16-18 X 3/4 HHCS GR5 Z	1
23	829-004	WORK TABLE FOR 2", 4", DS10-4 SANDERS	1
24	HHC5037020	3/8-16 X 1-1/4 HHCS GR5 Z	2
25	UFW2037	3/8 USS F/W Z	2
26	SSKA025006	1/4-20 X 3/8 SOC SET KNURL PT.	1
27	342-084A	LEVER FOR 2FSM FULL BOXED OSHA GUARD	1
28	HHC5025008	1/4-20 X 1/2 HHCS GR5 Z	1
29	EGSC500	EGSC500 1/2 D/C ESCR NMC CONN	1
30	710-008	ON/OFF SWITCH PLATE	1
31	710-007	ON/OFF TOGGLE SWITCH 1185-Q/208	1
32	BWVA031	5/16 BOWED SPRING WASHER 21/64	1



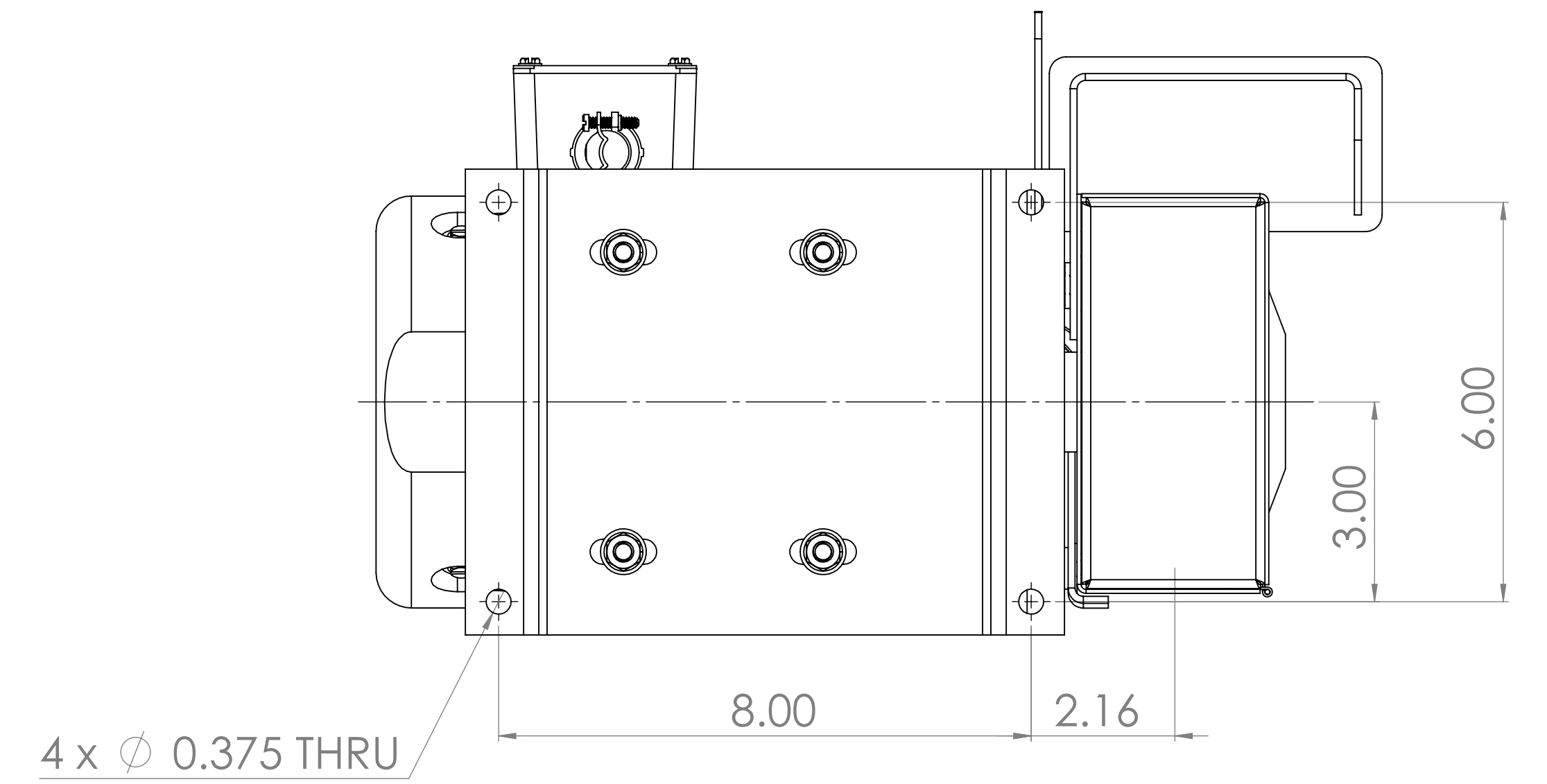
LEFT SIDE VIEW



FRONT VIEW



RIGHT HAND VIEW



MOUNTING HOLE PATTERN

MOTOR CENTERLINE
DISTANCE

PROPRIETARY AND CONFIDENTIAL
THIS INFORMATION CONTAINED IN THIS
DRAWING IS THE SOLE PROPERTY OF
KALAMAZOR BELT SANDERS, INC.
REPRODUCTION IN PART OR AS A WHOLE
WITHOUT THE WRITTEN PERMISSION OF
KALAMAZOR BELT SANDERS, INC. IS
PROHIBITED.

UNLESS OTHERWISE SPECIFIED:	NAME	DATE
DRAWINGS ARE IN INCHES		
TOLERANCES:		
FRACTIONS ±	DECIMALS	
ANGULAR ±	BEND ±	
POSITION ±	ENG APPR	
THREE PLACE DECIMAL ±	AWG APPR	
	D.A.	
INTERFERE GEOMETRIC TOLERANCES FREE	COMMENTS:	
MATERIAL:		
NEET KEY	USED ON	FINISH
APPLICATION	DO NOT SCALE DRAWING	

TITLE: 1/2HP, 1 PH, 110V 2'X48" BELT SANDER W FULL BOXED OSHA GUARD
SIZE: DWG. NO. 2FSMS
SCALE: 1:2 WEIGHT: SHEET 1 OF 1