

KI **KALAMAZOO**
INDUSTRIES, INC.
KALAMAZOO, MI



PH: (269) 382-2050

www.kalamazooind.com

2FS72 BELT GRINDER MANUAL



MADE IN USA

KI **KALAMAZOO** INDUSTRIES, INC. KALAMAZOO, MI

PH: (269) 382-2050

www.kalamazooind.com

WARNING!

TO REDUCE THE RISK OF FIRE OR SHOCK HAZARD,
DO NOT EXPOSE THIS EQUIPMENT TO RAIN, ANY LIQUID OR MOISTURE.

INSPECTION

If these goods are damaged in transit, the **DELIVERING TRANSPORTATION COMPANY** is required by law to make notation of damages on the freight bill. If in your opinion, there may be concealed damage, they are required to make an inspection after goods are unpacked. Transportation rates are made in proportion to damage. Therefore, the carrier and **NOT** the shipper should be charged with any loss or damage. Any claim should be filled with the delivering **TRANSPORTATION COMPANY. PLEASE DO NOT RETURN GOODS TO US WITHOUT OUR RGA NUMBER AND SHIPPING INSTRUCTIONS.**

NOTE: SEE NEXT PAGE FOR RETURN POLICY AND WARRANTY.

IMPORTANT

Read Operating Instructions before using equipment.

OPERATING INSTRUCTION

1. **Disconnect power** before making any adjustments.
2. Abrasive belt rotation is counter-clockwise. If the abrasive belt is lap spliced be sure of the correct belt rotation. Butt spliced belts bi-directional.
3. Belt tension is pre-set with internal spring **(10)**. No belt tension adjustment is required.
4. To change belt **disconnect power**, loose tracking knob **(17)**, compress spring belt tension by pushing down on tension shaft **(11)**, remove belt and replace with new belt of your choice.
5. Belt tracking- with power disconnected rotate belt by hand to center or "track" sanding belt. Rotate tracking knob **(17)** and tracking collar **(18)**, left and or right turns the tension shaft **(11)** to "track" the belt. Re-lock the tracking knob **(17)** to lock in belt tracking. Reconnect connect power.

KI **KALAMAZOO** INDUSTRIES, INC. KALAMAZOO, MI



PH: (269) 382-2050

www.kalamazooind.com

WARRANTY

All products are guaranteed for a period of one year from receipt of order to the original purchaser, against defects in material workmanship under normal use. Electric motors are warranted by the motor manufacturer for a period of one year and will be repaired by the nearest motor repair station. If non-repairable, they will be replaced by Kalamazoo Industries. Please call for instructions (269) 382-2050.

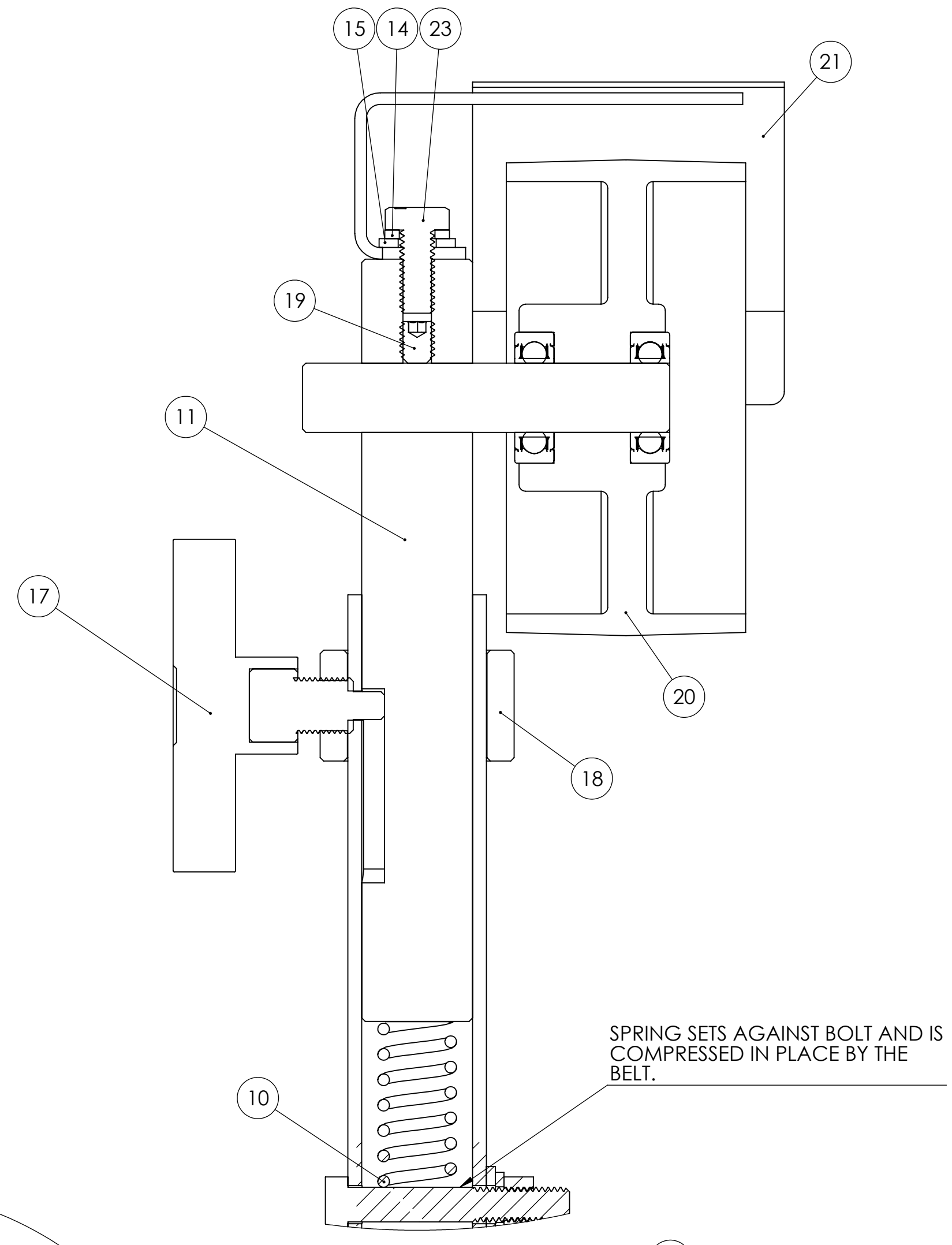
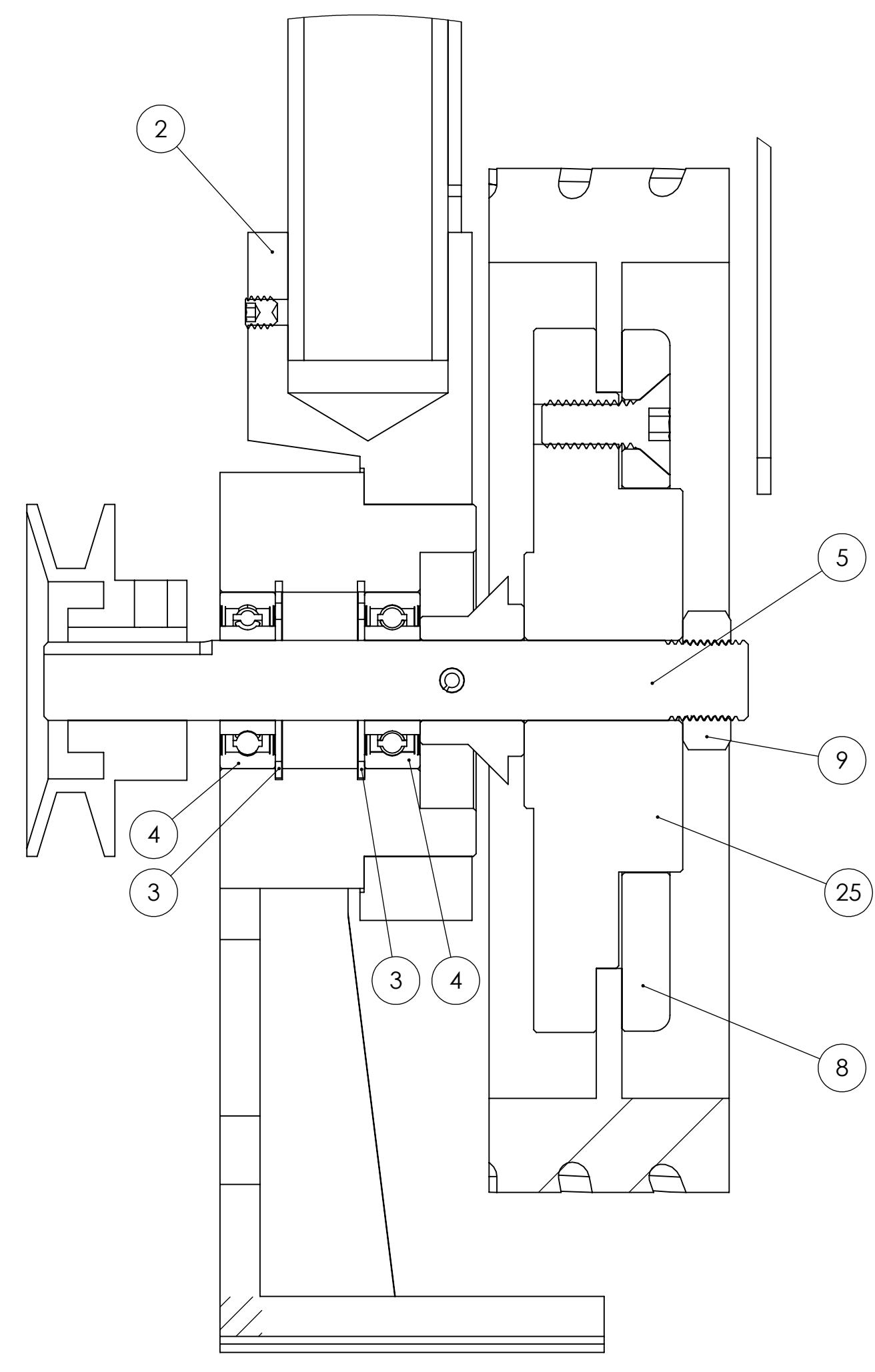
RETURN POLICY

Authorization must be obtained before returning merchandise. Please call our customer service department for a return authorization number (269) 382-2050. Please include with your return a copy of your invoice of packing slip. All material must be new and unused in the original packaging. Material must be sent back prepaid (unless otherwise indicated) by Kalamazoo Industries. Credit upon inspection at Kalamazoo Industries. All returns will be subject to a 10% restock charge. Used merchandise is non-returnable. No returns will be accepted after one year of invoice date.

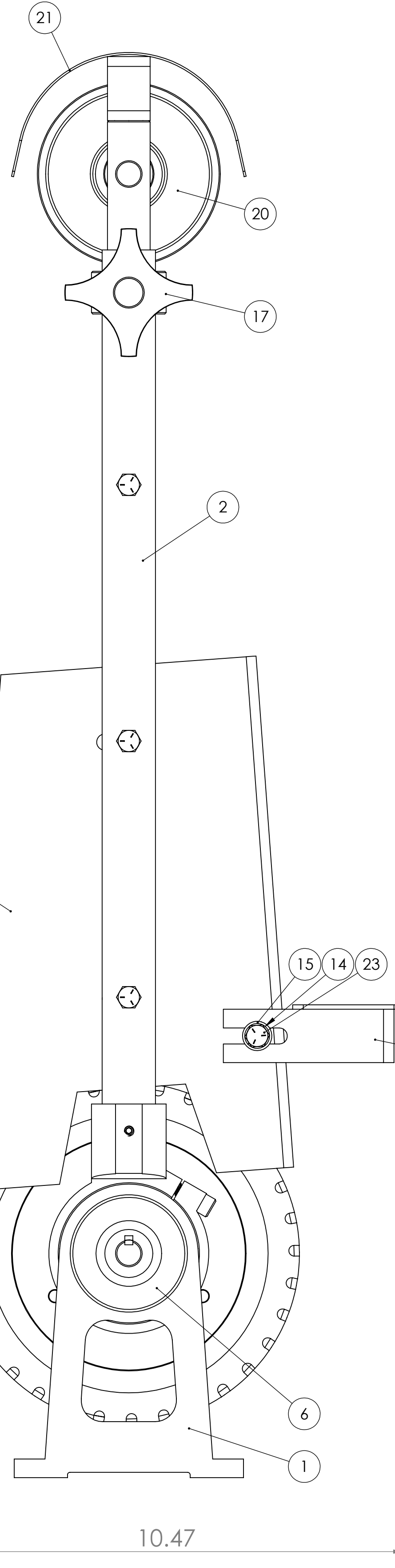
BELT GRINDER SAFETY

- READ THE OPERATING INSTRUCTIONS BEFORE RUNNING MACHINE.
- ALWAYS WEAR SAFETY GLASSES OR A FULL FACE SHIELD FOR PROTECTION.
- KEEP HANDS CLEAR OF THE SANDING AREA.
- NEAR WEAR GLOVES OR LOOSE FITTING CLOTHES WHEN OPERATING THIS MACHINE.
- ALWAYS KEEP HAIR TIED BACK OR COVERED.
- LET MACHINE ROTATION COME TO A FULL STOP BEFORE CHANGING BELT.
- KEEP SAFETY GUARDS IN PLACE. DO NOT ALTER GUARD OR MACHINE IN ANYWAY. ANY ALTERATIONS TO GUARDS OR MACHINE COULD CAUSE SERIOUS INJURY.
- ALL BELT GRINDERS SHOULD BE OPERATED IN A WELL-VENTILATED AREA. THE DUST CREATED WHEN SOME MATERIALS ARE SANDED CAN BE HARMFUL. DUST MASKS ARE RECOMMEND AS A PRACTICAL MEAN OF MINIMIZING DUST INHALATION. FUMES FROM OTHER OTHER SOURCES CAN ALSO CAUSES FIRES WHEN INTACT WITH SANDING SPARK.
- SPARKS CREATED BY GRINDING SHOULD BE DIRECTED DOWNWARD AND AWAY FROM THE FACE AND BODY. DON NOT GRIND NEAR FLAMMABLE MATERIAL.
- ELECTRIC GRINDING MACHINES ARE NOT INTENDED FOR USE IN OR NEAR WATER. THIS INCLUDES AN OPERATOR STANDING ON A WET FLOOR OR WORKING AROUND CONTAINERS OF WATER OR OTHER CONDUCTIVE LIQUIDS.

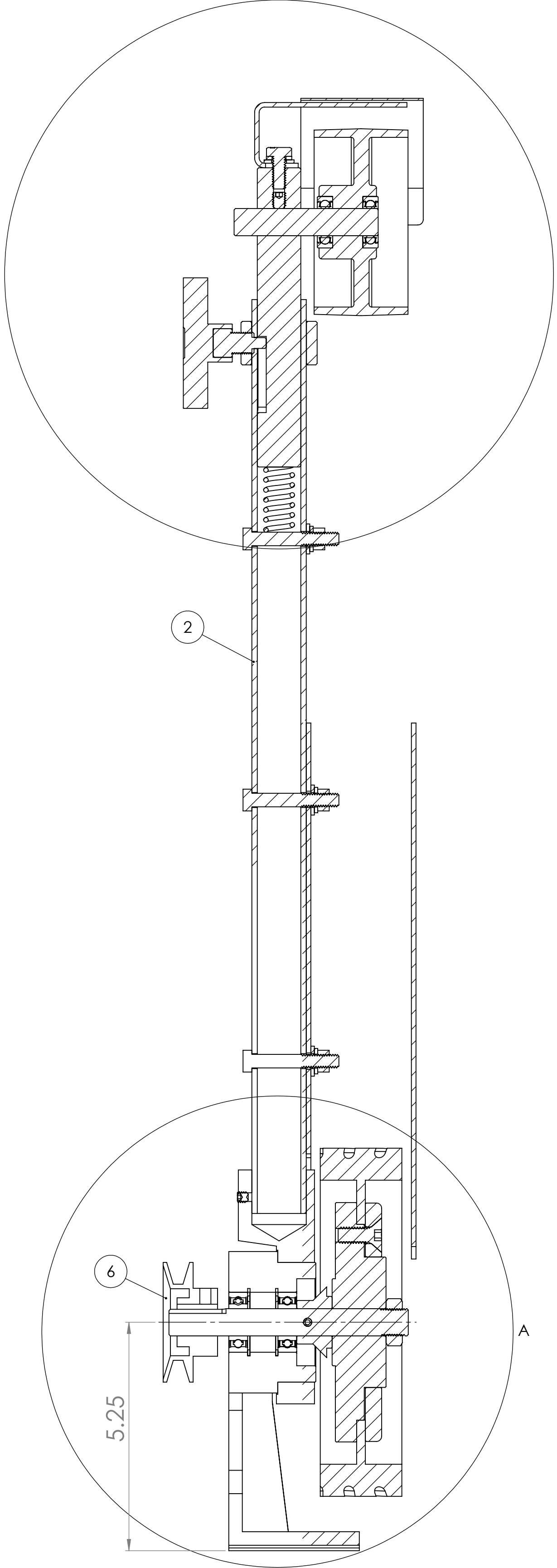
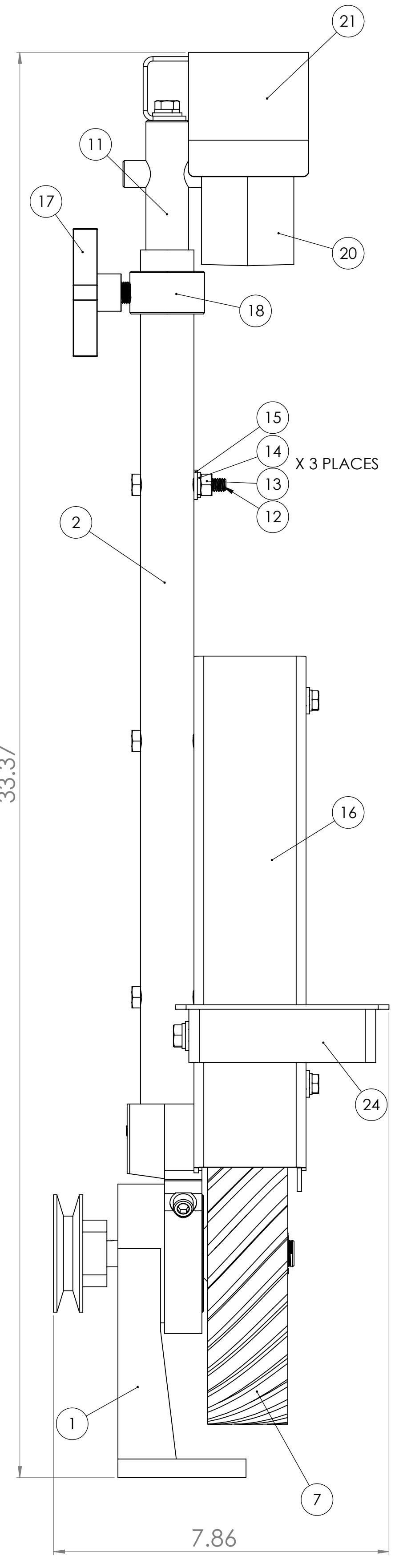
ITEM NO.	PART NUMBER	DESCRIPTION	QTY.
1	041-053	BASE BRACKET FOR 2FS72	1
2	291-011	2FS72 FRAME ASSEMBLY (LESS MOTOR)	1
3	641-015	RETAINING RING N5000-137 BLACK PHOSPHATE FOR 2FS, 2FS72 BASE	2
4	044-007	K10 BEARING	2
5	701-009	SPINDLE W FLANGE FOR 2FS	1
6	560-004	MOTOR PULLEY FOR K7B, K8B, 2FS, 2FS72M	1
7	936-018	WHEEL DRIVE (8X2) C134T, 8" DIA., 1.875" FACE, 70 DURO, STANDARD SERRATION FOR BG248 AND 2FS72M	1
8	292-027	LOOSE FLANGE FOR WHEEL ADAPTOR FOR 2FS72 AND BG448 (NEW STYLE)	1
9	FJNZ063	5/8-18 F.H. JAM NUT Z	1
10	697-013	TENSION SPRING FOR 2FS, 2FS72, 2FSM, BG142, 2FS72M, K12-148	1
11	645-008	TENSION ROD FOR 2FS, 2FSM, 2FS72, 2SK7 SANDERS	1
12	HHC5031032	5/16-18 X 2 HHCS GR5 Z	3
13	FHN5031	5/16-18 FHN GR5 ZINC	3
14	SLWZ031	5/16 SPLIT L/W Z	5
15	UFWZ031	5/16 USS F/W Z	5
16	563-040	PLATEN FOR 2FS72 AND 2FS72M	1
17	441-011	TRACKING KNOB FOR 2FS, 2FS72, 2FSM, 2SK7 SANDERS	1
18	123-004	TRACKING COLLAR FOR 2FS, 2FS72, 2FSM, 2SK7, BG142	1
19	SSKA031006	5/16-18 X 3/8 SOC SET KNURL PT.	1
20	936-003	NYLON IDLER PULLEY W BEARINGS FOR S272, BG272, 2FS72M, BG248	1
21	342-009	GUARD UMBRELLA FOR 2FS, 2FS72, 2FS72M, BG248 SANDERS	1
22	UFWZ025	1/4 USS F/W Z	2
23	HHC5031012	5/16-18 X 3/4 HHCS GR5 Z	2
24	829-004	WORK TABLE FOR 2", 4", DS10-4 SANDERS	1
25	292-023A	TIGHT FLANGE FOR CONTACT WHEEL FOR 2FS72	1
26	FSCA037016	3/8-16 X 1 FSHCS	3
27	563-040SP	SIDE PLATE FOR 2FS72 AND 2FS72M PLATEN	1
28	HHC5025008	1/4-20 X 1/2 HHCS GR5 Z	2
29	SLWZ025	1/4 SPLIT L/W Z	2



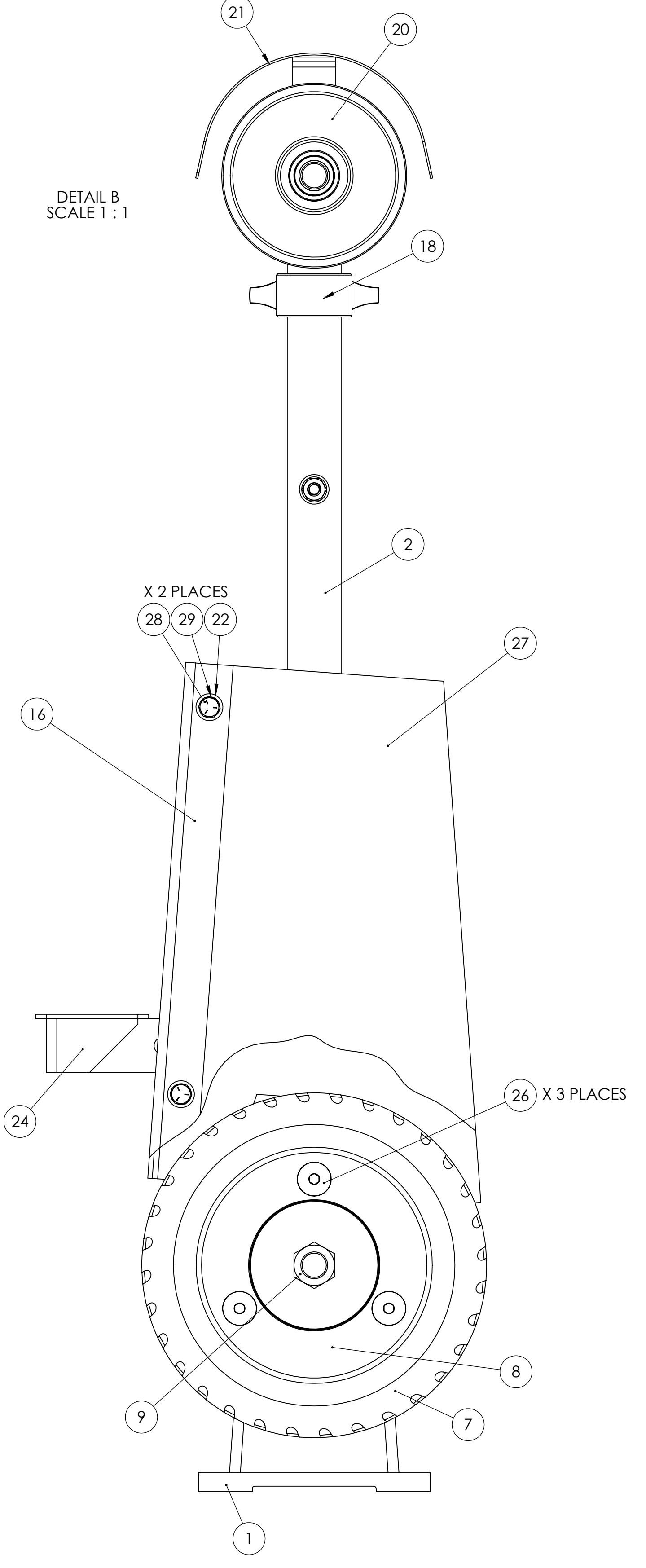
SPRING SETS AGAINST BOLT AND IS COMPRESSED IN PLACE BY THE BELT.



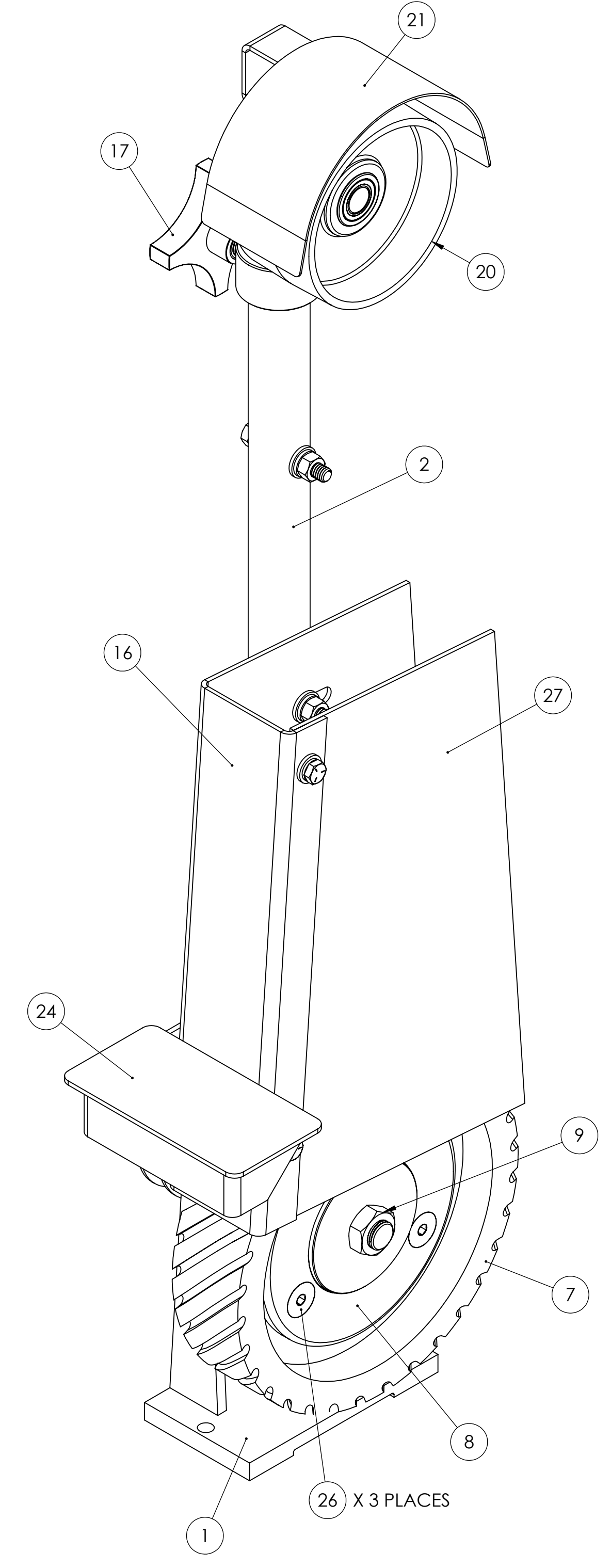
DETAIL A SCALE 1:1



SECTION A-A SCALE 1:2



DETAIL B SCALE 1:1



PROPRIETARY/CONFIDENTIAL
 THE INFORMATION CONTAINED IN THIS DRAWING IS THE SOLE PROPERTY OF KALAMAZOR. IT IS TO BE USED FOR THE MANUFACTURE OF THE PRODUCTS DESCRIBED HEREIN AND IS NOT TO BE REPRODUCED IN ANY MANNER WITHOUT THE WRITTEN PERMISSION OF KALAMAZOR. KALAMAZOR HAS THE RIGHT TO MAKE CHANGES WITHOUT NOTICE.

UNLESS OTHERWISE SPECIFIED:		NAME	DATE
DIMENSIONS ARE IN INCHES	TOLERANCES:	DRAWN BY	CHECKED
FRACTIONS ARE	ANGULAR DIMENSIONS	ENG APPR	ENG APPR
THREE PLACE DECIMAL	THREE PLACE DECIMAL	AWG APPR	
INTERFERE GEOMETRIC TOLERANCES PER	AS PER	D.A.	COMMENTS:
NEED KEY	USED ON	FINISH	
APPLICATION	DO NOT SCALE DRAWING		

KALAMAZOR
2FS72 ASSEMBLY
 SIZE DWG. NO. REV
E 2FS72
 SCALE: 1:5 WEIGHT: SHEET 1 OF 1