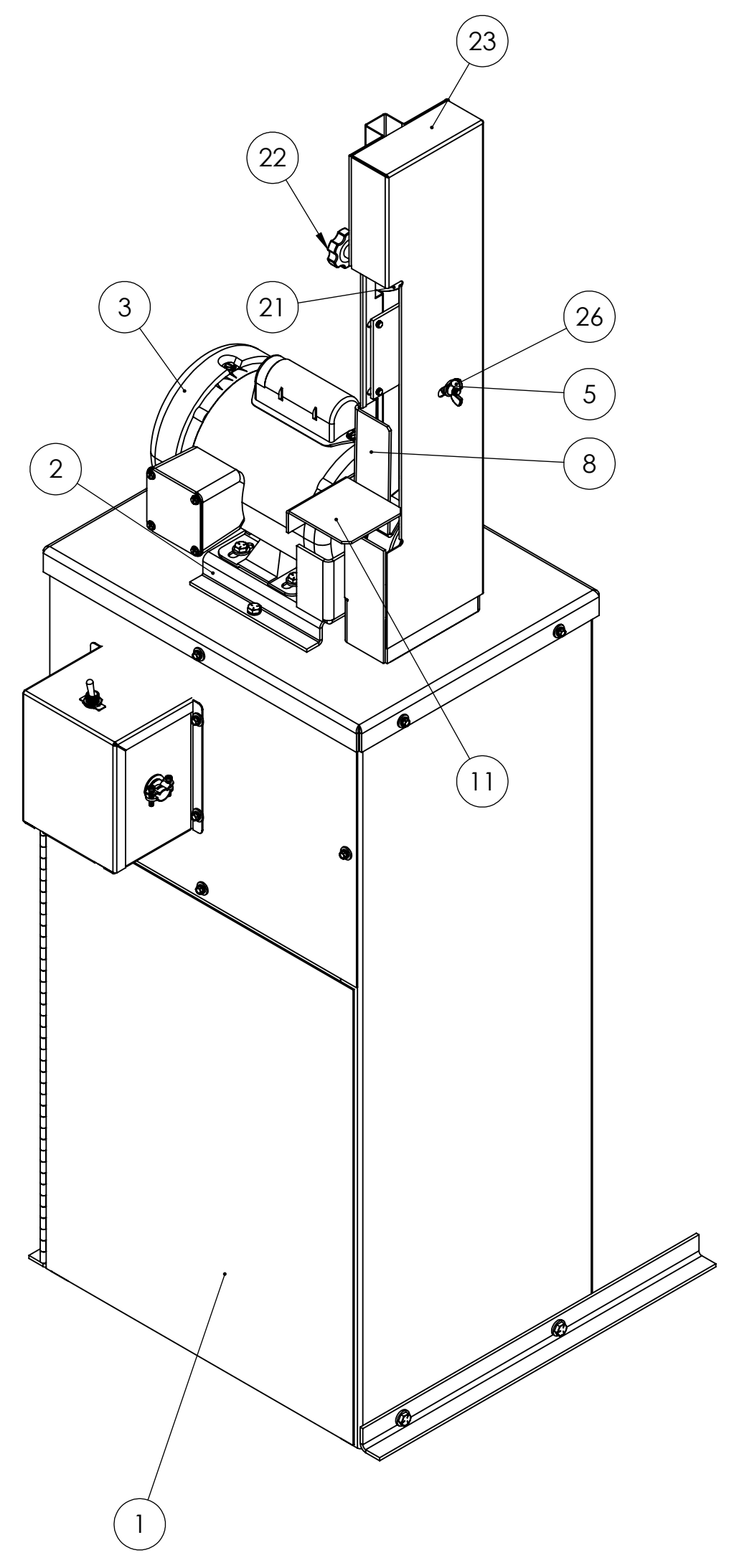
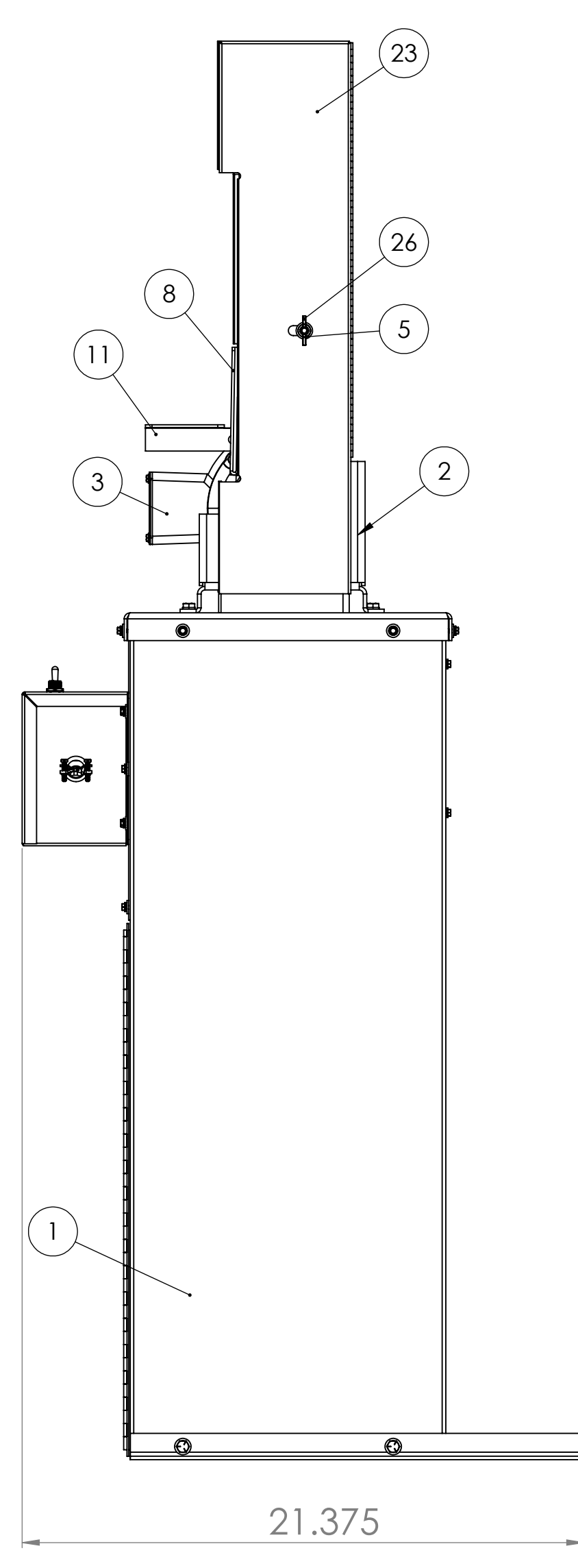
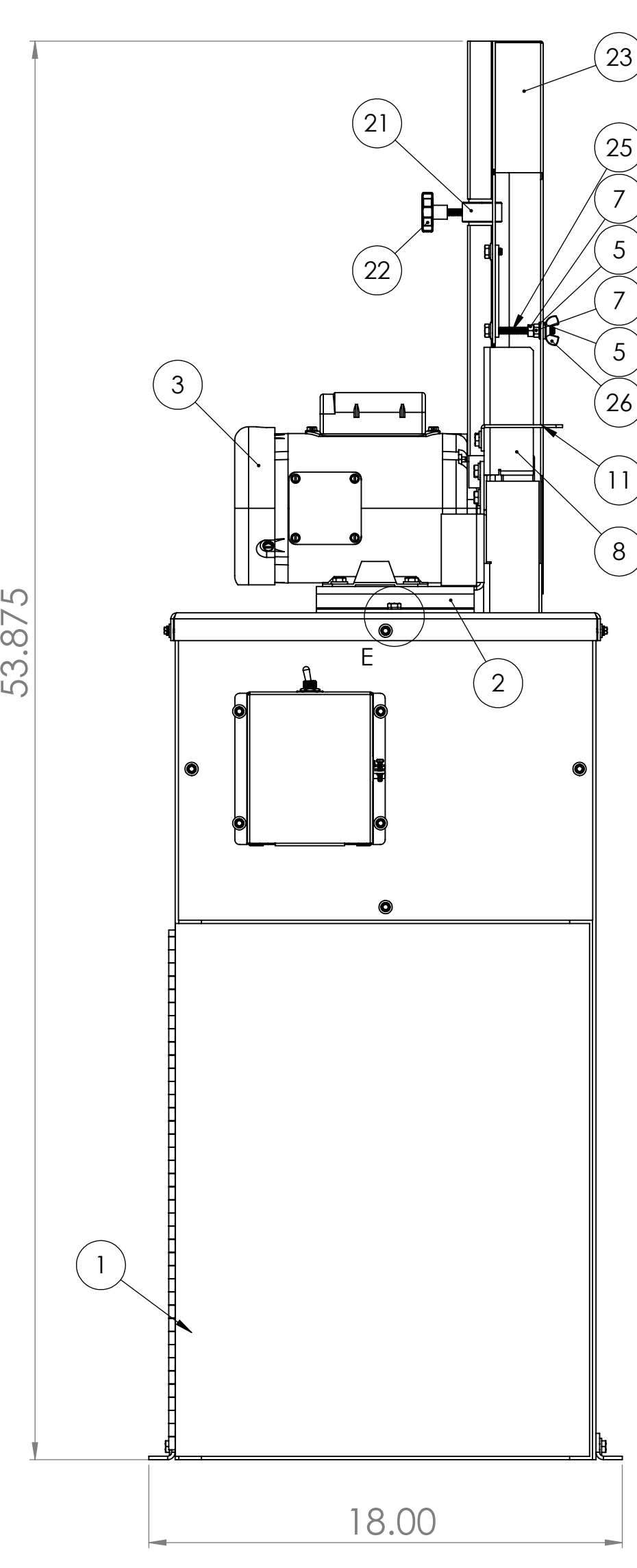
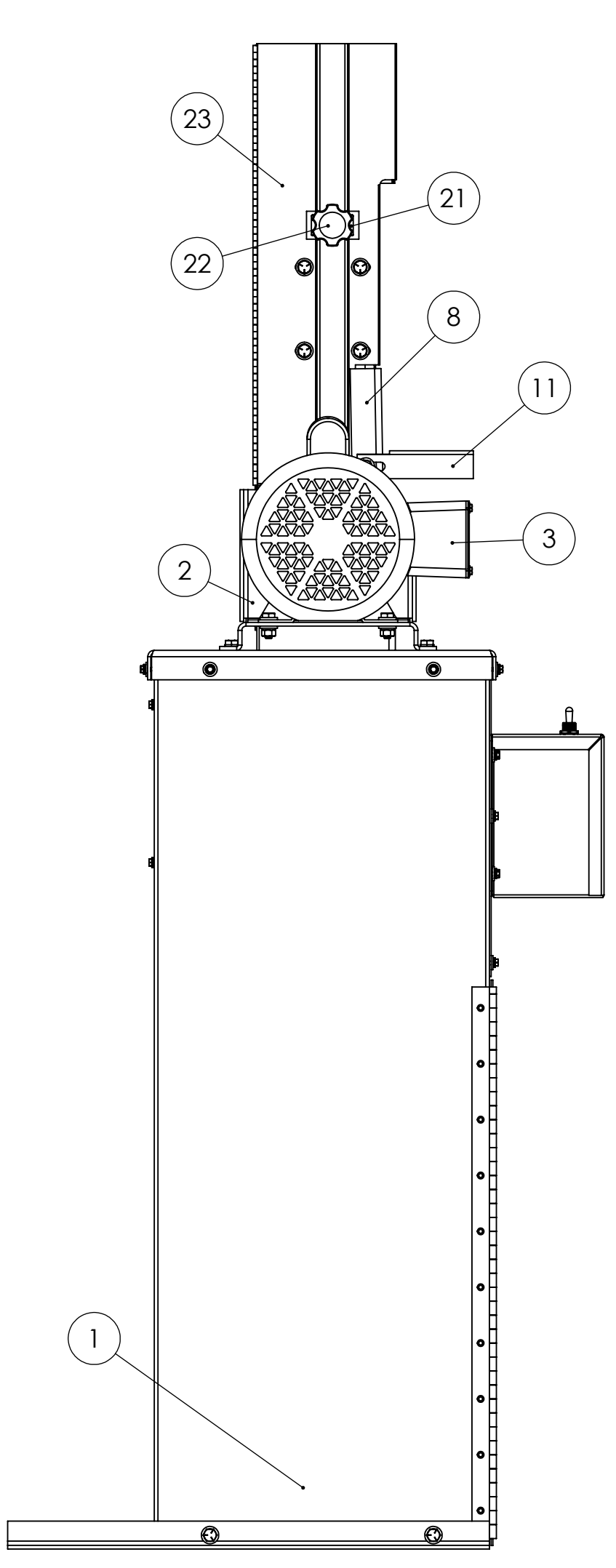
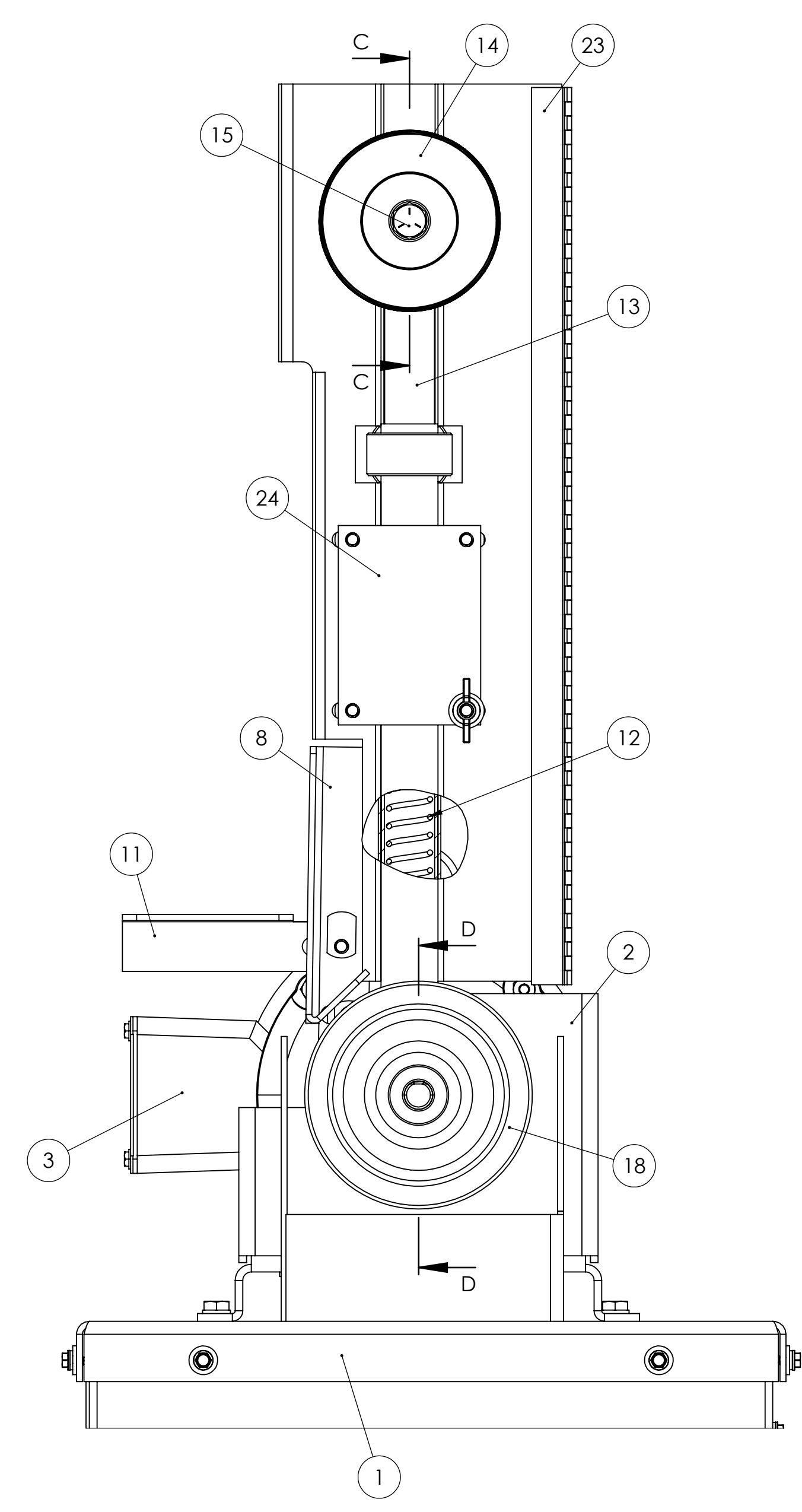
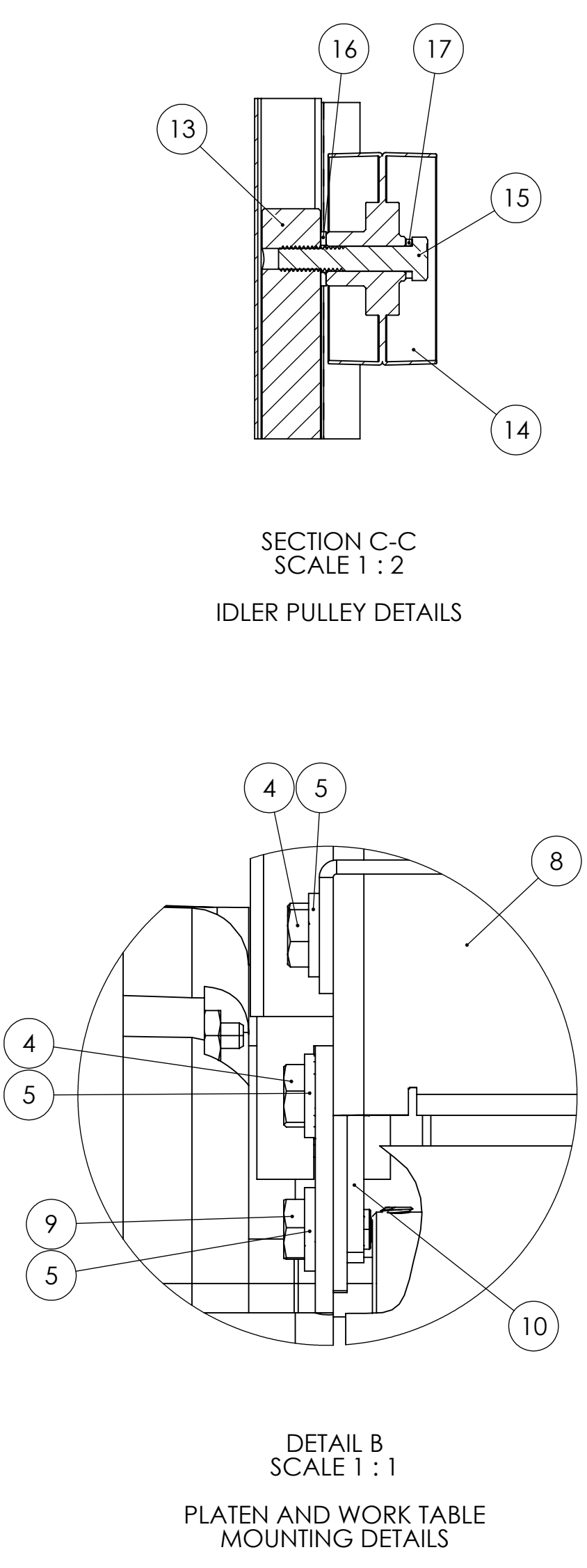
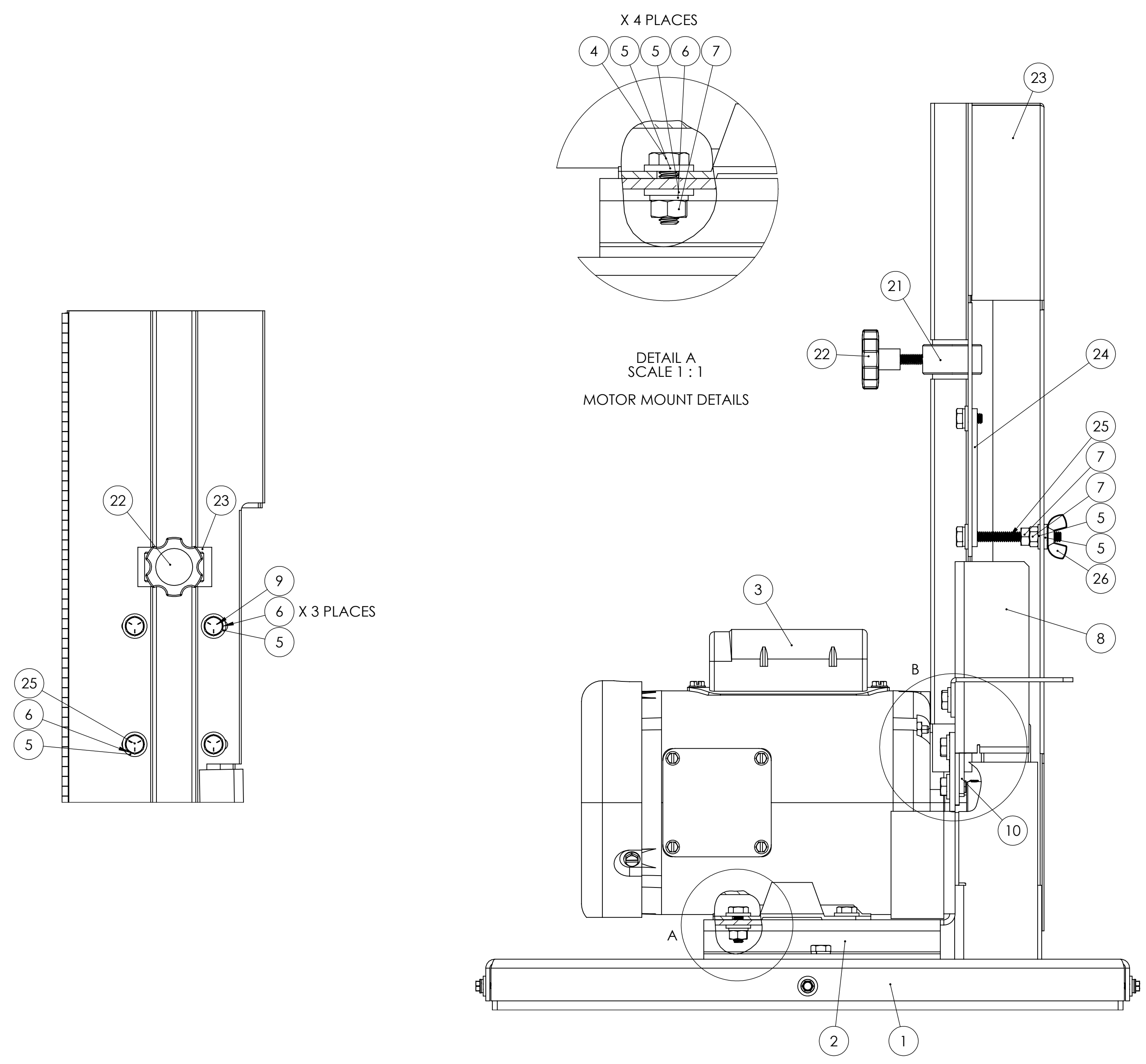


ITEM NO.	PART NUMBER	DESCRIPTION	QTY.
1	DCV-4(1SMV)	DCV-4 DUST COLLECTOR FOR 1SMV APPLICATION	1
2	291-007	ISM FRAME ASSEMBLY	1
3	484-021	1/3HP MOTOR FOR 1SM	1
4	HHC5025012	1/4-20 X 3/4 HHCS GR5 Z	8
5	UFWZ025	1/4 USS F/W Z	17
6	SLWZ025	1/4 SPLIT L/W Z	10
7	FHN5025	1/4-20 FHN GR5 Z	6
8	563-003V	PLATEN, FOR 1SMV	1
9	HHC5025008	1/4-20 X 1/2 HHCS GR5 Z	4
10	BUCKTP2116	1/4-20 TAB SPOT WELD NUT DOUBLE ALLOY	1
11	829-013	ISM WORK TABLE	1
12	697-020	TENSION SPRING FOR 1SM AND 1SK6 SANDERS	1
13	700-005	TENSION SHAFT FOR 1SM, 1SK6 SANDERS	1
14	560-018	ISM IDLER PULLEY	1
15	HHC5037032	3/8-16 X 2 HHCS GR5 Z	1
16	UFWZ037	3/8 USS F/W Z	1
17	SLWZ037	3/8 SPLIT L/W Z	1
18	560-017	ISM DRIVE PULLEY	1
19	SSKA025006	1/4-20 X 3/8 SOC SET KNURL PT.	1
20	SSSA025024	1/4-20 X 1-1/2 SOC SET CUP PT.	1
21	123-015	TRACKING COLLAR FOR 1SM, 1SK6, S1	1
22	441-015	907B-2500-1.00S 1/4 THUMBSCREW 1-1/2 DIA	1
23	342-061V	1 INCH GUARD, FULL BOXED OSHA VACUUM FOR 1SMV SANDER	1
24	342-061A	CLAMPING BRACKET FOR 1 INCH OSHA FULL BOX GUARD	1
25	HHT5025040	1/4-20 X 2-1/2 HEX HEAD BOLT GR5 Z	1
26	WGNZ025	1/4-20 FORGED WING NUT Z	1



PLEASE REFER TO DCV-4 DRAWING FOR DETAILED INFORMATION REGARDING THE DCV-4 DUST COLLECTOR UNIT.

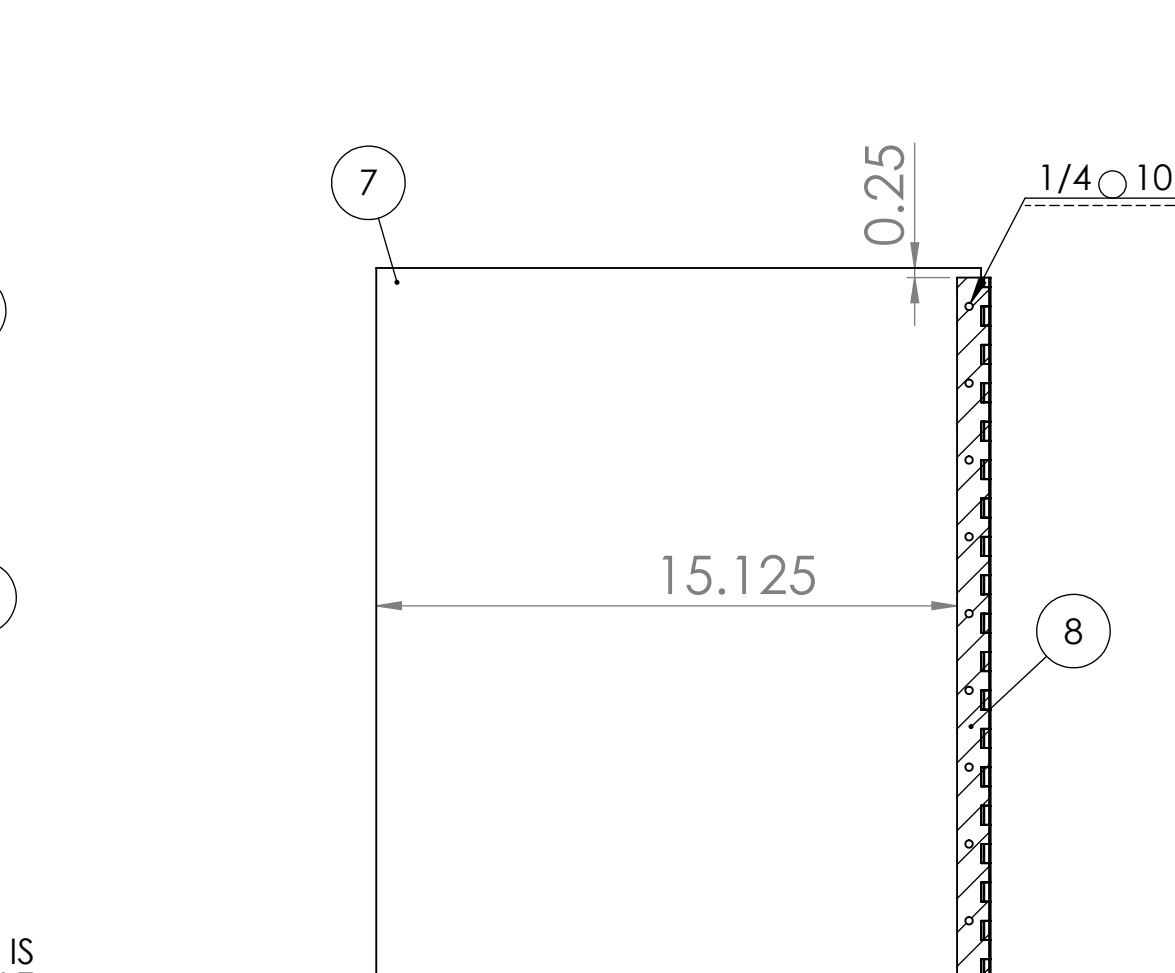
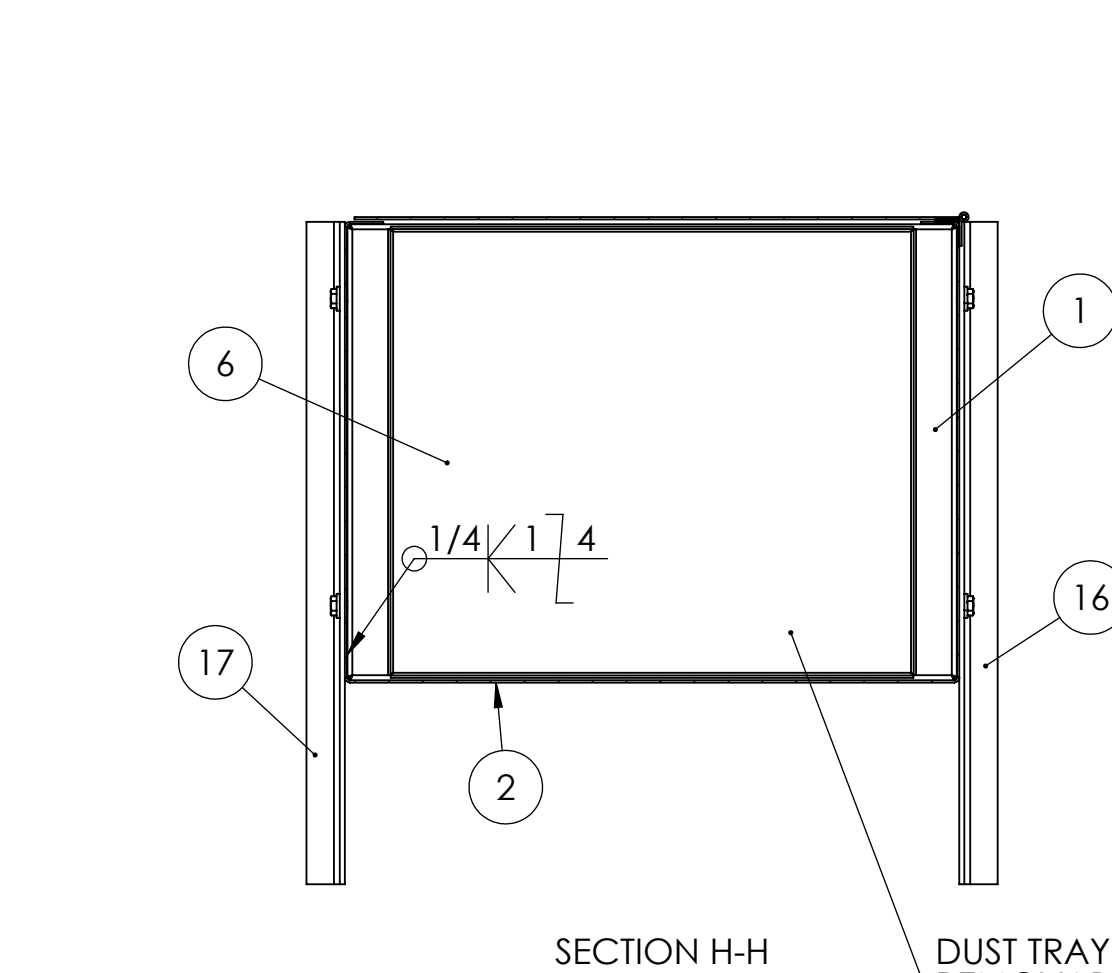
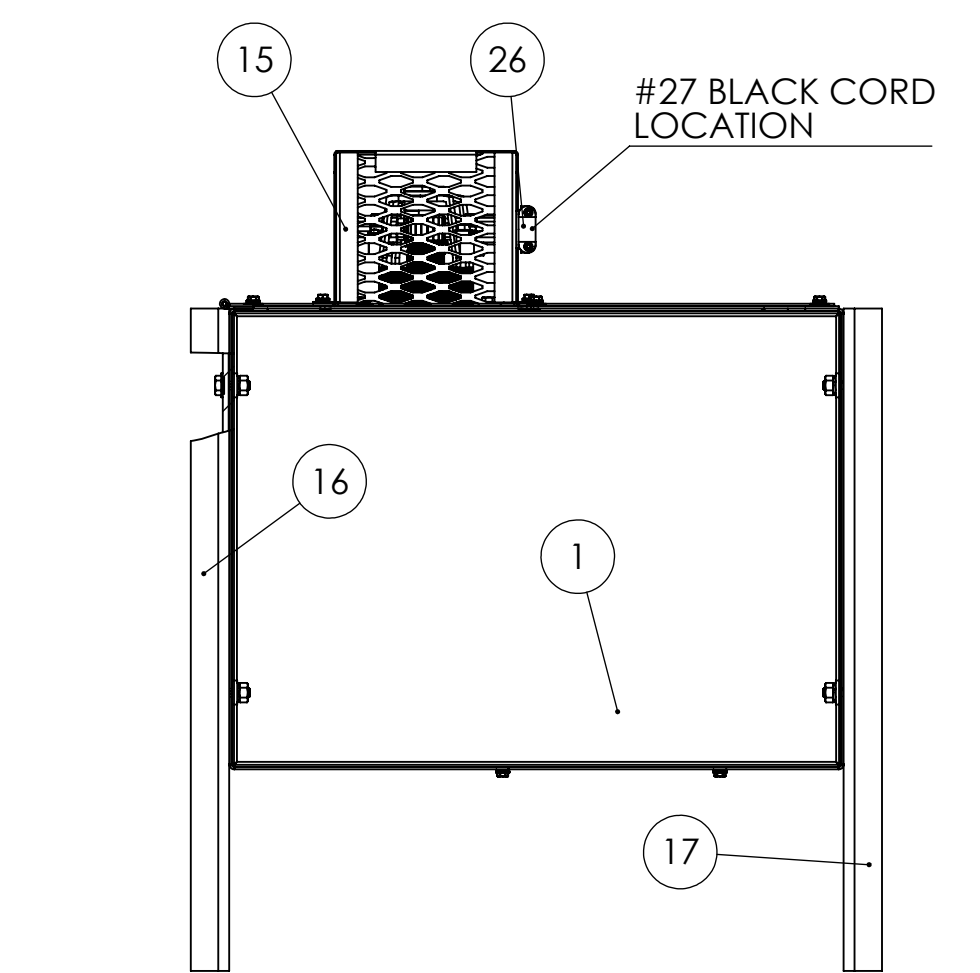
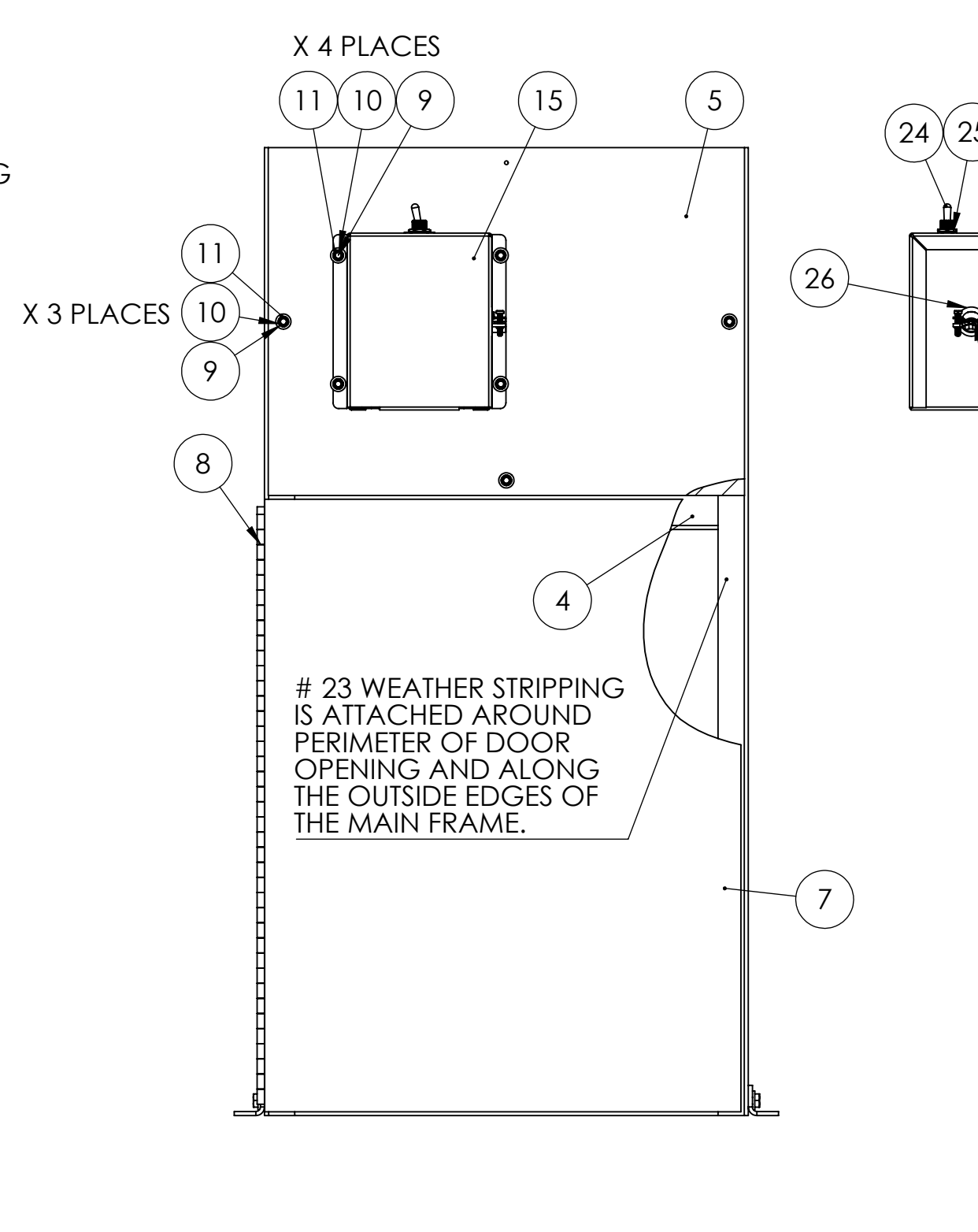
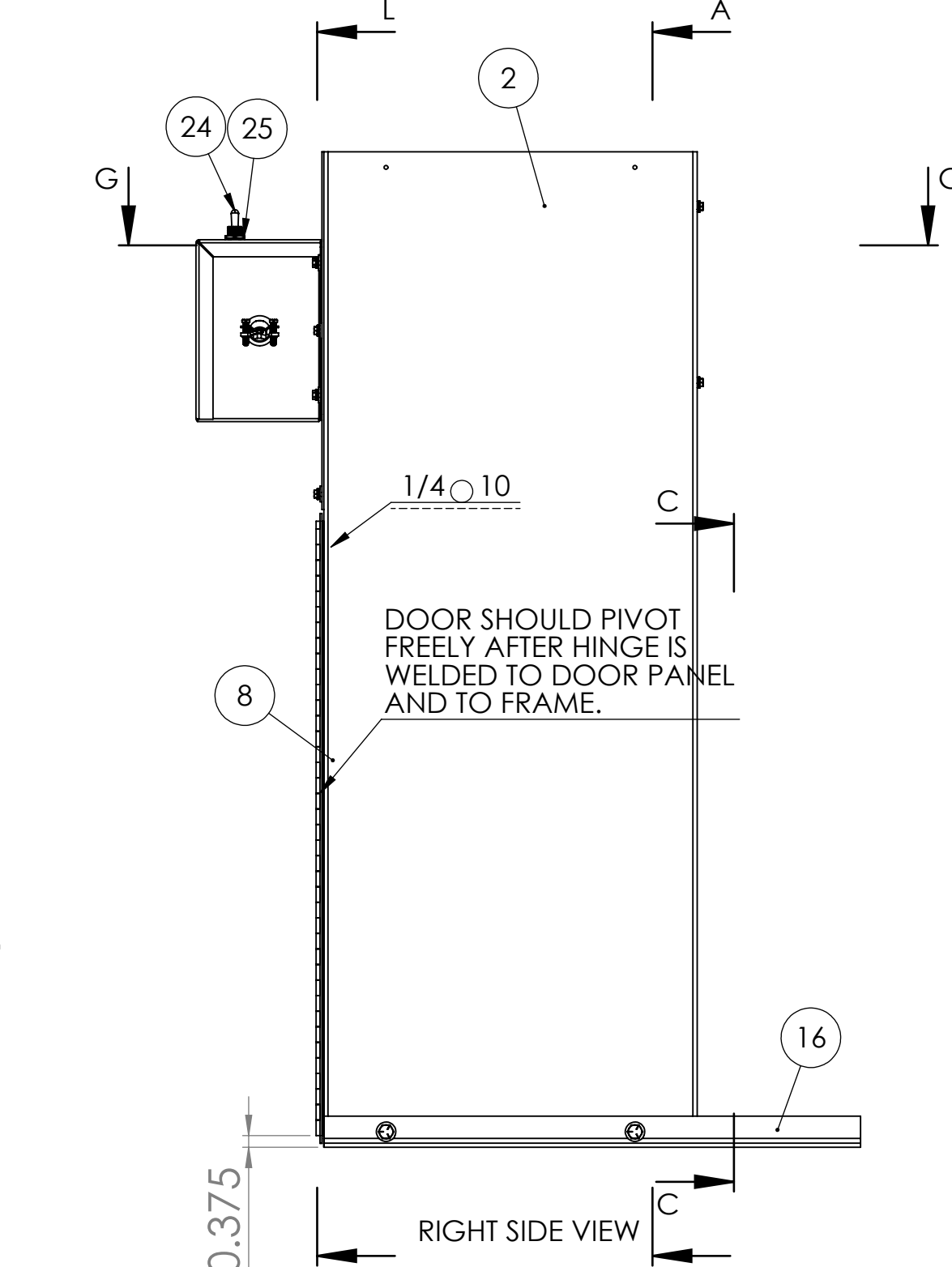
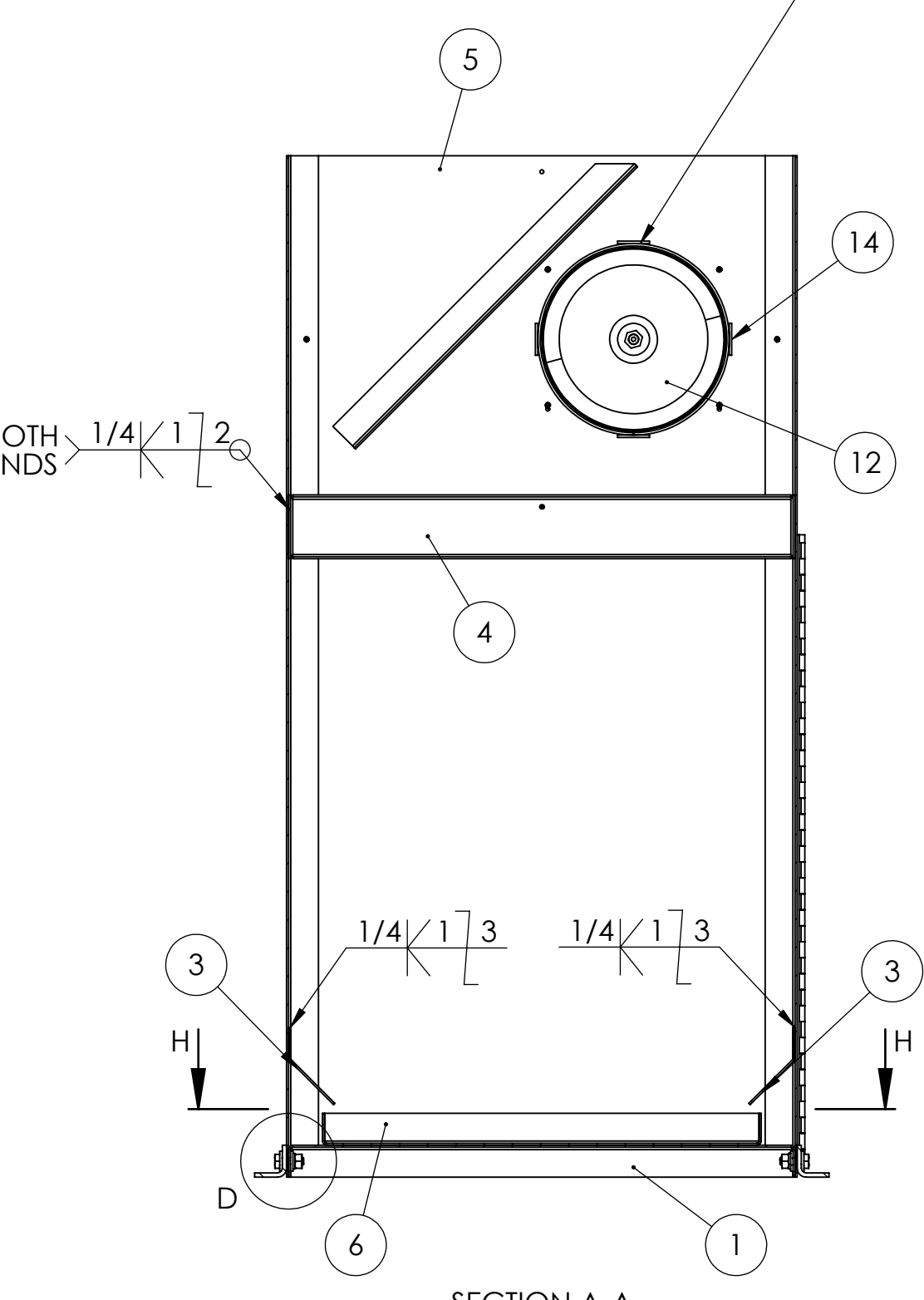
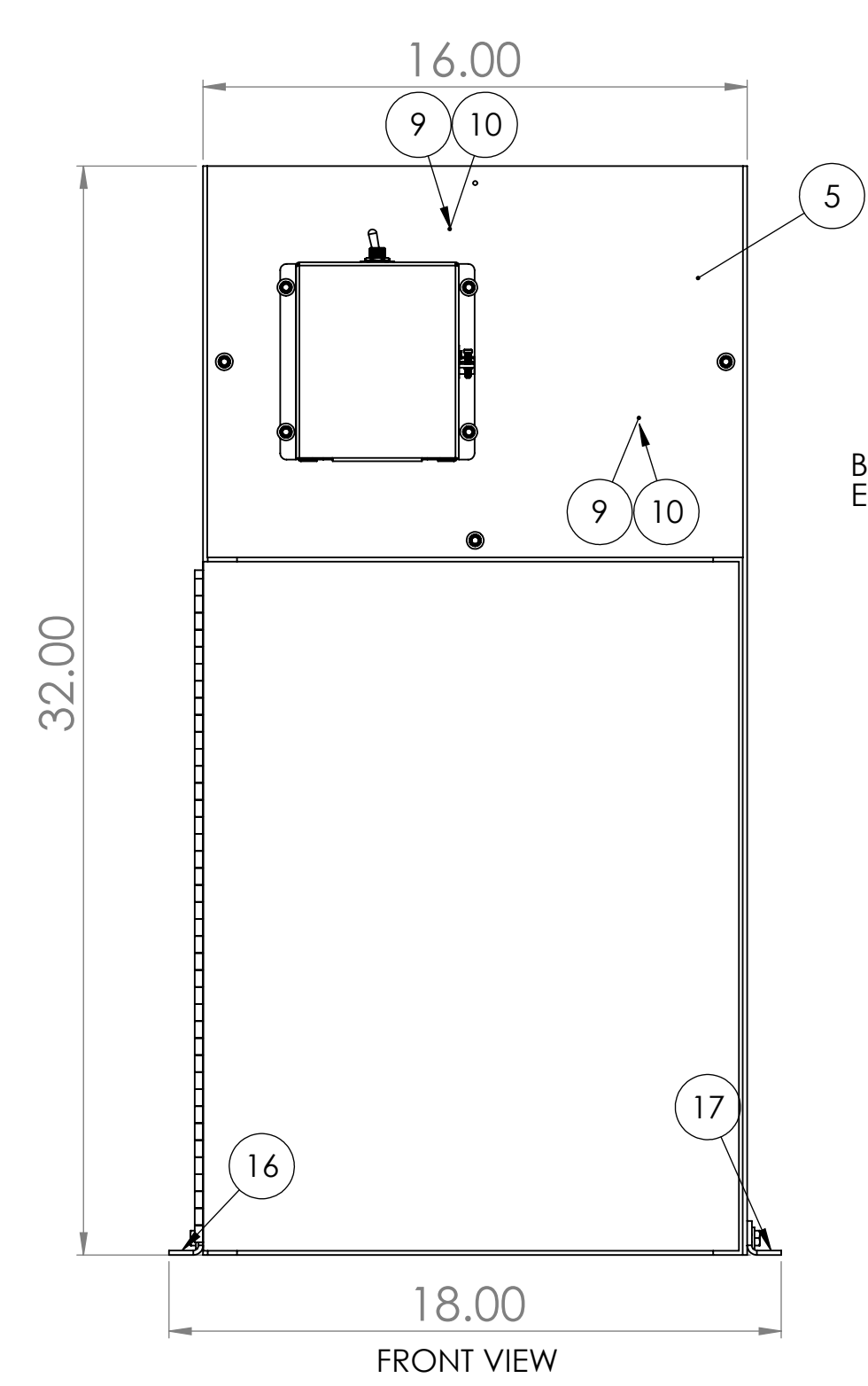
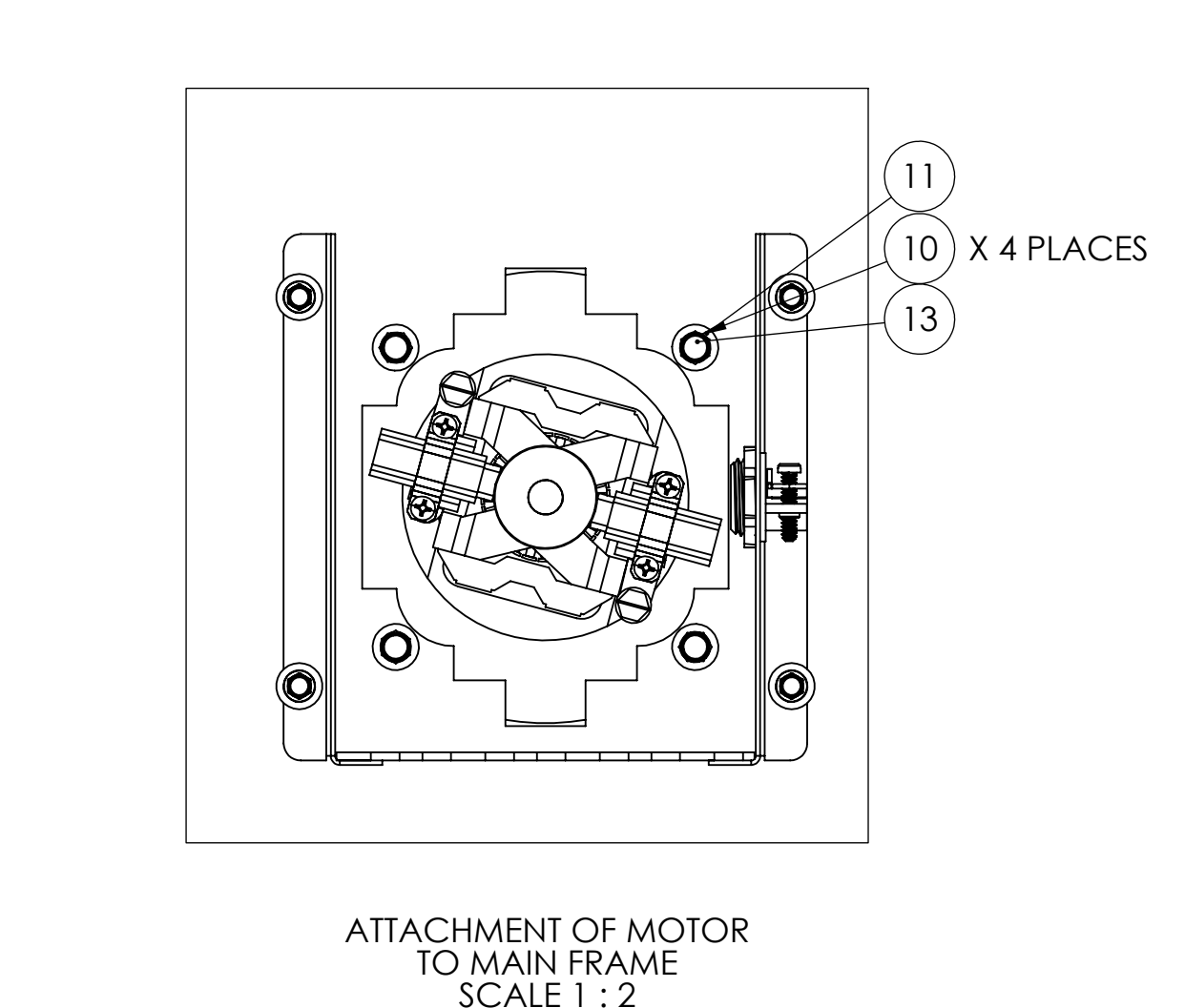
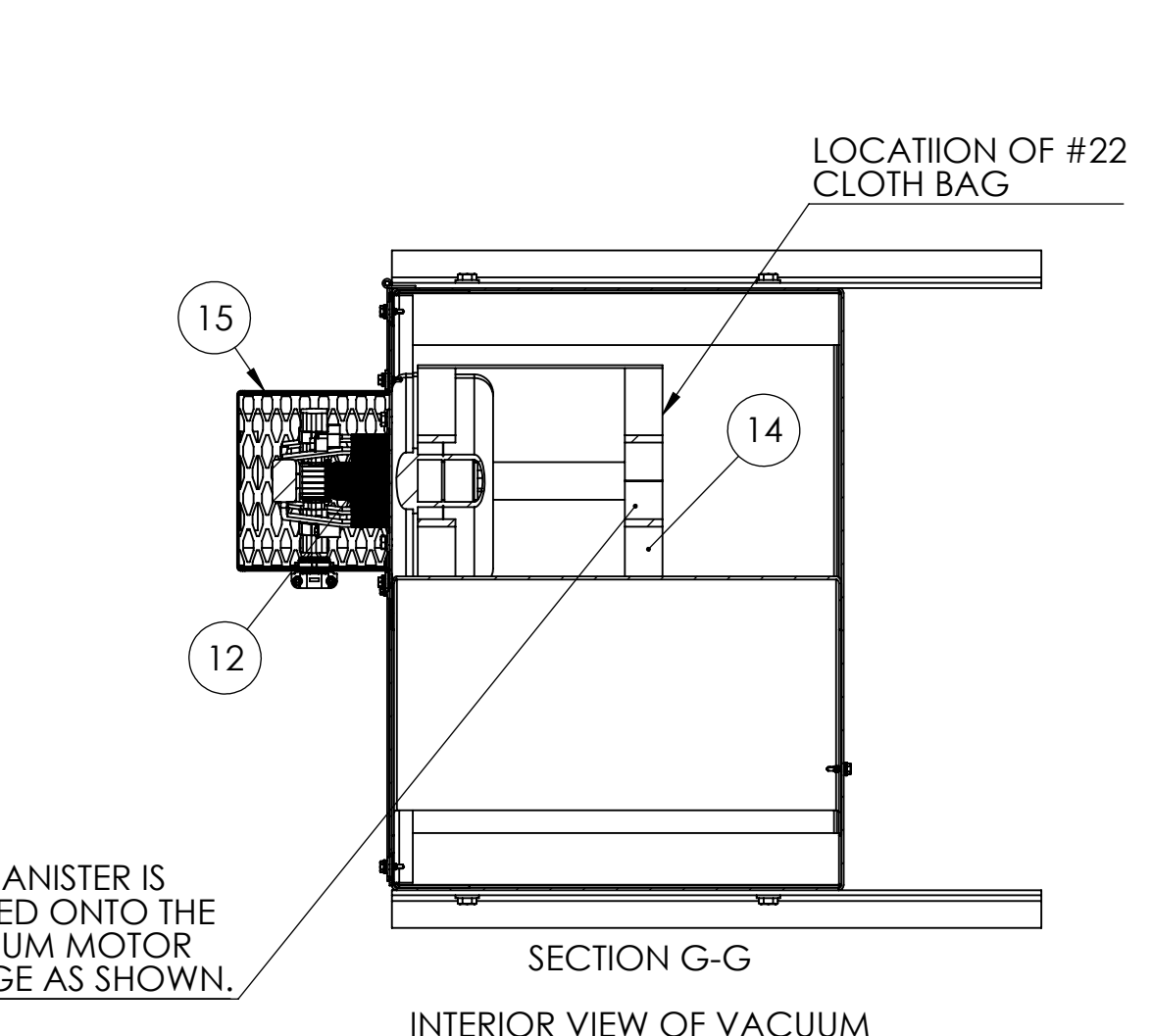
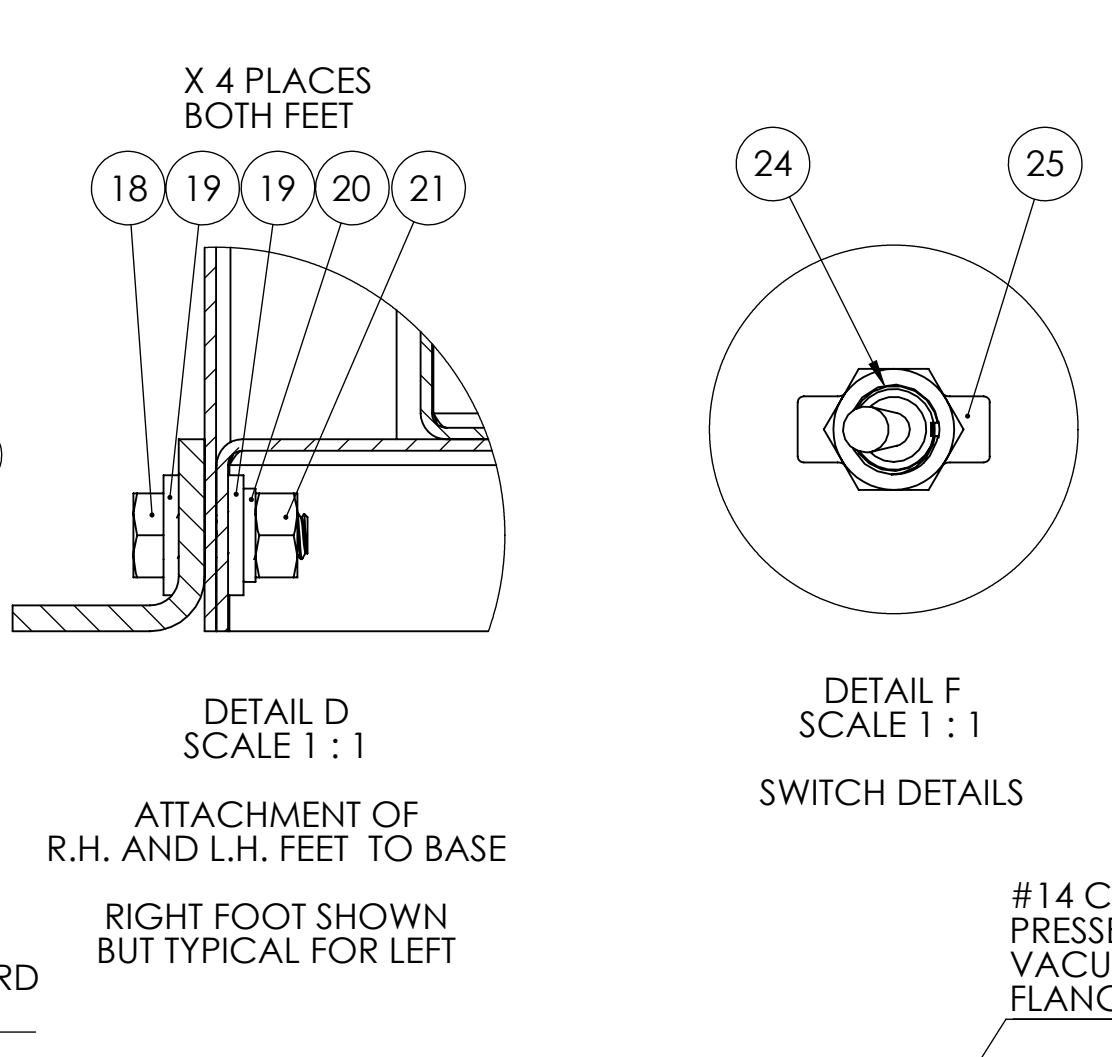
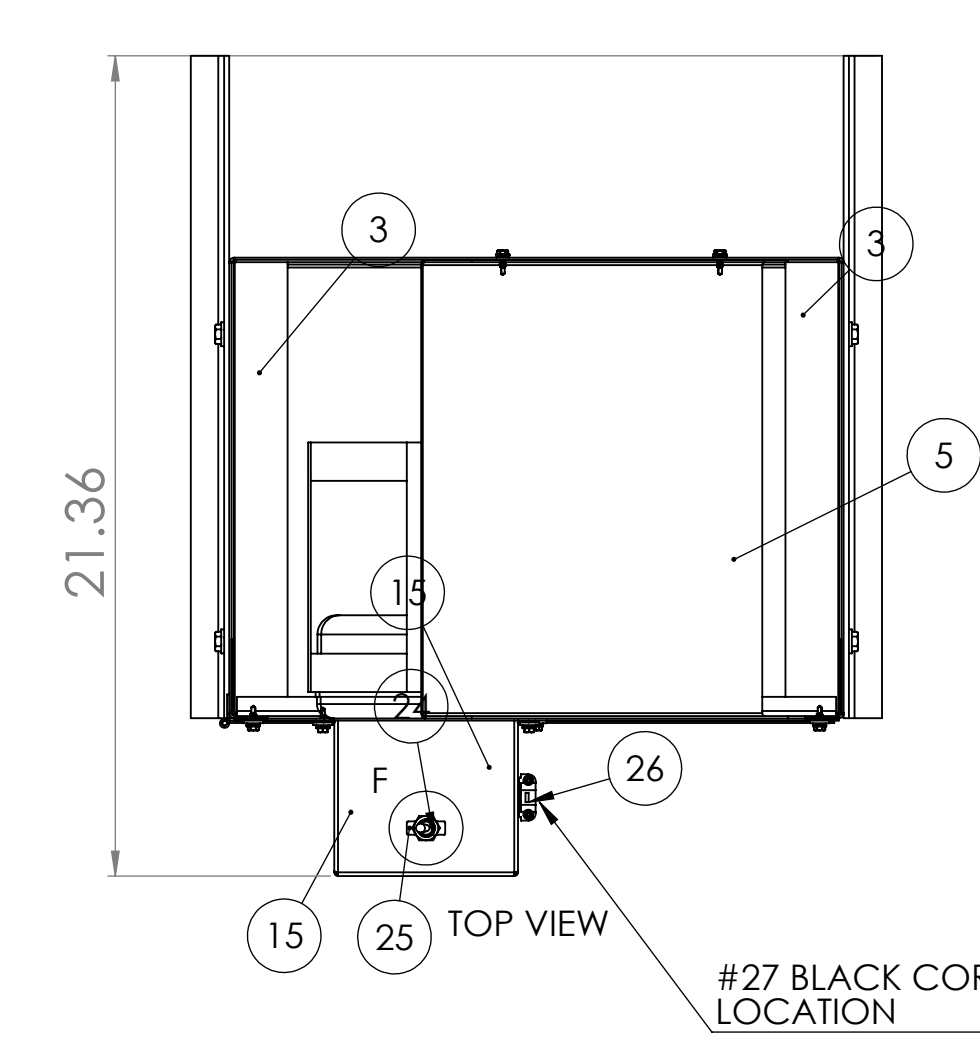
UNLESS OTHERWISE SPECIFIED:		NAME	DATE
DIMENSIONS ARE IN INCHES	TOLERANCES:	DRAWN	CHECKED
FRACTIONS < 1/8	± .005	DESIGNED	ENG APPR.
DECIMALS < .005	± .001	MANUFACTURED	WFG APPR.
ANGLES < 90°	± .005	DATE	COMMENTS:
PROFILES < .005	± .005		
THREE PLACE DECIMAL	± .001		
INTERFERENCE GEOMETRIC TOLERANCES PER ASME Y14.5			
FINISH			
NEATNESS	USED ON		
APPLICATION	DO NOT SCALE DRAWING		

TITLE: ISM SANDER MOUNTED ON DCV-4 DUST COLLECTOR

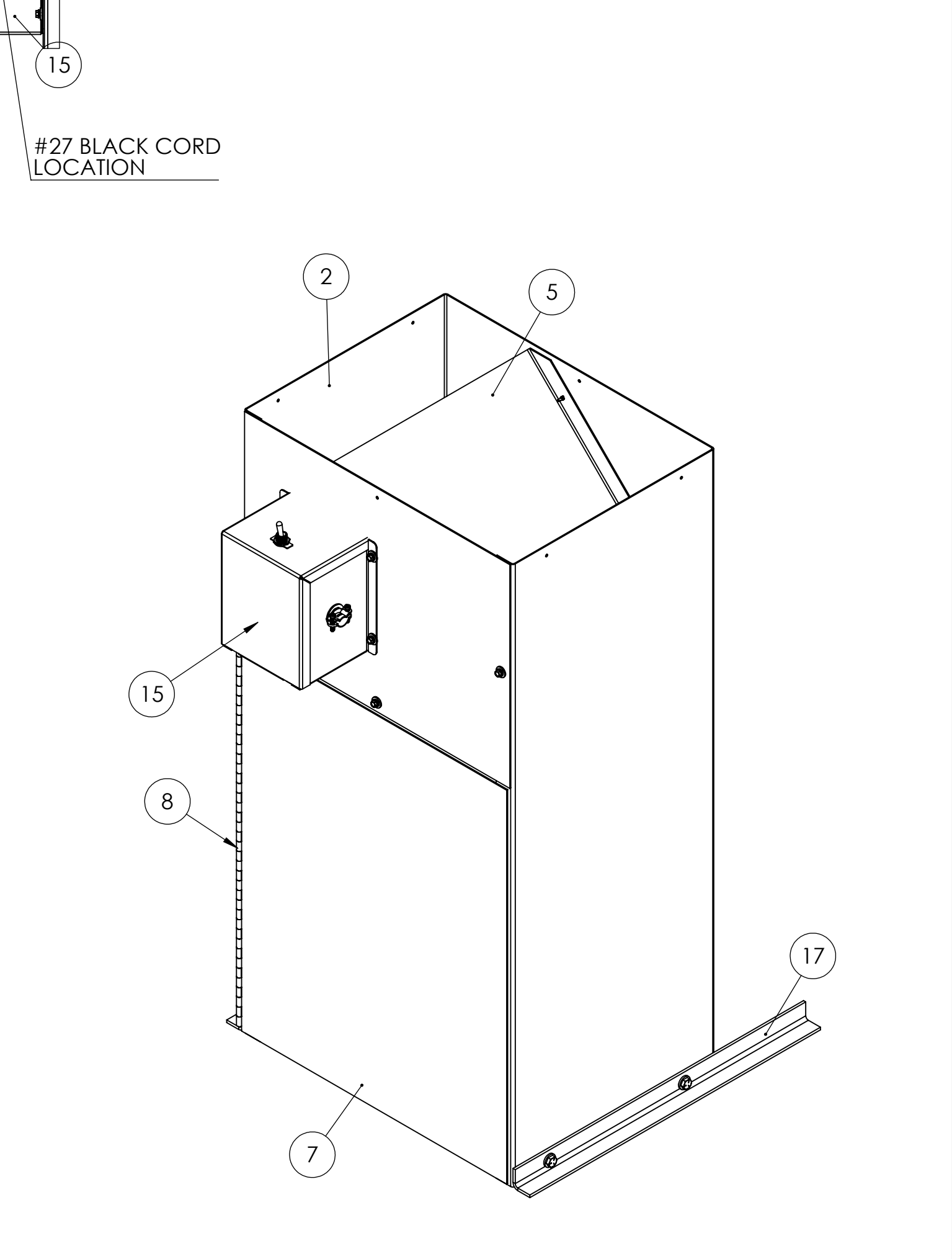
SIZE: DWG. NO. **E** 1SMV

SCALE: 1:1.5 WEIGHT: SHEET 1 OF 1

8 7 6 5 4 3 2 1



ITEM NO.	PART NUMBER	DESCRIPTION	QTY.
1	124-001 FLOORPAN	FLOOR PAN FOR DCV-4 CABINET	1
2	124-001 MAIN	MAIN PANEL FOR DCV-4 CABINET	1
3	124-001 CHUTE	DUST CHUTE FOR DCV-4 CABINET	2
4	124-001 CROSSBRACE	CROSS BRACE FOR DCV-4 CABINET	1
5	540-002	PANEL, MOTOR MOUNTING FOR DCV-4	1
6	124-001 TRAY	DUST TRAY FOR DCV-4 CABINET	1
7	162-001	DOOR FOR DCV-4	1
8	162-001 HINGE	HINGE FOR DCV-4 DOOR	1
9	HWZ008008	#8 X 1/2 HWH TEKS Z	9
10	SLWZ010	#10 SPLIT L/W Z	13
11	MSWZ010	#10 M.S. F/W Z	11
12	486-005	VACUUM MOTOR FOR DCV-4	1
13	HHMZ010008	10-24 X 1/2 HHMS Z	4
14	120-001	CANISTER FOR KS390V, KS490V, DCV-4, DS12V	1
15	122-001	SWITCH COVER FOR DCV-4 AND DCV-10	1
16	294-001-R.H.	R.H. FOOT FOR DCV-4 CABINET	1
17	294-001-L.H.	L.H. FOOT FOR DCV-4 CABINET	1
18	HHC5025012	1/4-20 X 3/4 HHCS GR5 Z	4
19	UFWZ025	1/4 USS F/W Z	8
20	SLWZ025	1/4 SPLIT L/W Z	4
21	FHN5025	1/4-20 FHN GR5 Z	4
22	5X878	CLOTH BAG FOR DCV-4 DUST COLLECTOR	1
23	933-001 X94 INCHES	94 INCHES OF WEATHER STRIPPING AROUND BACK OF DCV-4 CABINET	1
24	710-007	ON/OFF TOGGLE SWITCH 1185-Q/20B	1
25	710-008	ON/OFF SWITCH PLATE	1
26	EGSC500	EGSC500 1/2 D/C ESCR NMC CONN	1
27	157-001	ELECTRIC CORD FOR SMALL SANDERS	1



BASIC CABINET IS USED FOR DCV-4/S4SV AND FOR DCV-4/DS10 APPLICATIONS.

PROPRIETARY AND CONFIDENTIAL
THE INFORMATION CONTAINED IN THIS DRAWING IS THE SOLE PROPERTY OF KALAMAZOO INDUSTRIES, INC. ANY REPRODUCTION IN PART OR AS A WHOLE WITHOUT THE WRITTEN PERMISSION OF KALAMAZOO INDUSTRIES, INC. IS PROHIBITED.

UNLESS OTHERWISE SPECIFIED: DIMENSIONS ARE IN INCHES TOLERANCES: FRACTIONAL ± ANGULAR ± MAJOR ± BEND ± TWO PLACE DECIMAL ± THREE PLACE DECIMAL ± INTERPRET GEOMETRIC TOLERANCING PER: MATERIAL FINISH NEXT ASSY USED ON APPLICATION	DO NOT SCALE DRAWING	DRAWN CHECKED ENG APPR. MEG APPR. Q.A. COMMENTS:	NAME DATE	KALAMAZOO INDUSTRIES, INC.	TITLE: CABINET, VACUUM FOR DCV-4	SIZE DWG. NO. D 124-001	REV	SCALE: 1:5 WEIGHT:	SHEET 1 OF 1
---	----------------------	---	--------------	-----------------------------------	--	-----------------------------------	-----	--------------------	--------------

8 7 6 5 4 3 2 1