



Instruction Manual

1SM

1 x 42 Inch Belt Sander

www.kalamazooind.com

Kalamazoo Industries, Inc.
6856 East K Avenue
Kalamazoo, MI 49048
Phone 269-382-2050

GENERAL POWER TOOL SAFETY WARNINGS



WARNING: TO REDUCE THE RISK OF FIRE OR SHOCK HAZARD, DO NOT EXPOSE THIS EQUIPMENT TO RAIN, LIQUID, OR MOISTURE.

READ AND SAVE ALL WARNINGS AND INSTRUCTIONS FOR FUTURE REFERENCE

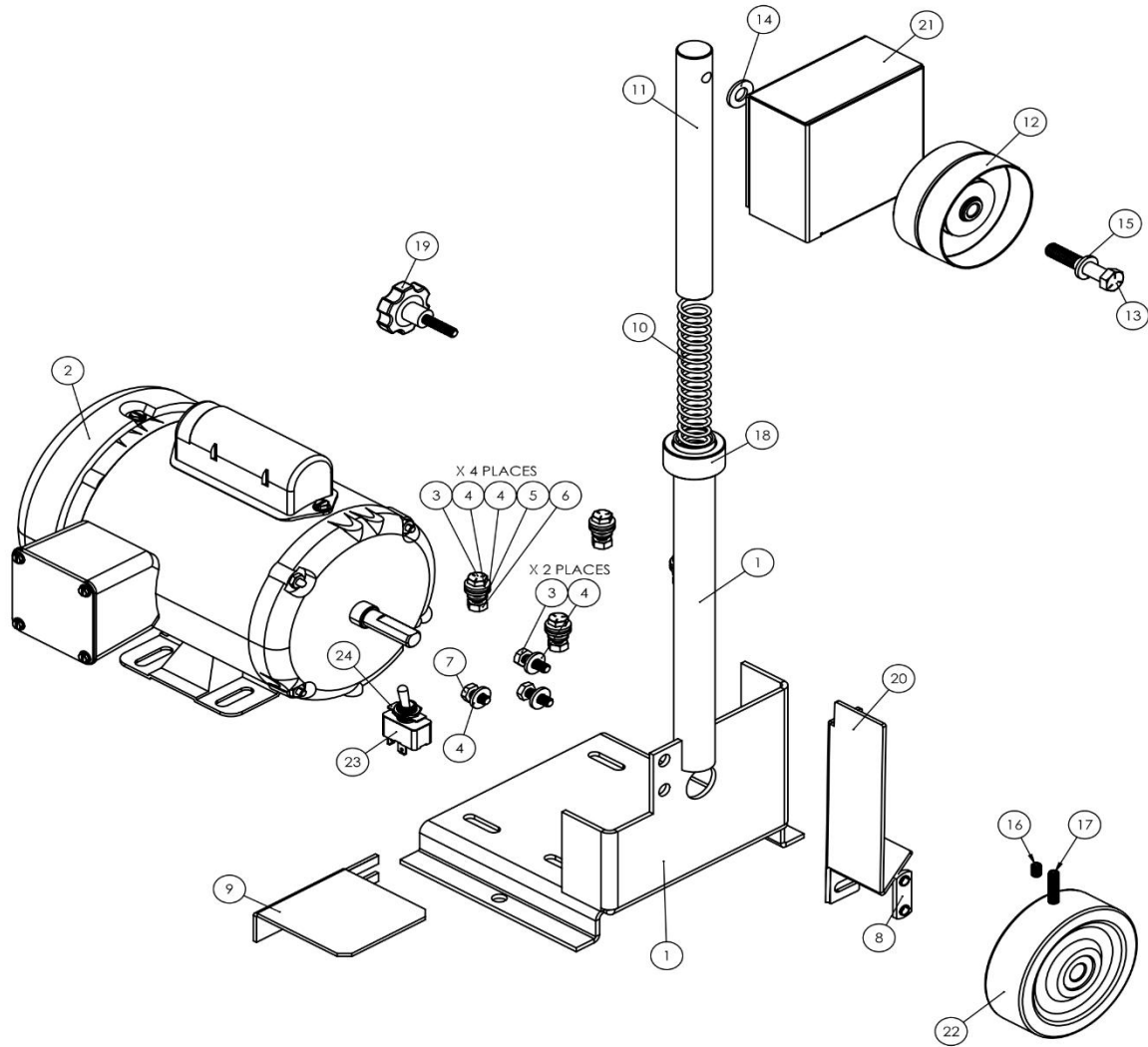
PRECAUTIONS

- Always wear safety glasses when operating power tools.
- Keep work area clean and well lit.
- Do not operate power tools in explosive atmospheres, such as the presence of flammable liquids, gases or dust.
- Keep children and bystanders away while operating a power tool.
- Keep long hair tied back or covered and never wear loose fitting clothing near a running machine.
- Additional precautions may be necessary when grinding materials that are flammable or have other hazardous properties. Consult manufacturer of materials for safe grinding and handling.

OPERATING INSTRUCTIONS

- Disconnect power before making any adjustments
- Abrasive belt rotation is counterclockwise. If the abrasive belt is lap spliced, be sure of correct rotation. Butt spliced belts are bi-directional.
- Belt tension is pre-set with tension spring (10) No belt tension adjustment is needed.
- Belt changing – disconnect power, loosen tracking knob (19), open box guard (21), compress spring belt tension shaft (11). Remove belt and replace with new belt.
- Belt tracking – with power disconnected, rotate belt by and to center or “track” sanding belt. Rotate tracking knob (19) and tracking collar (18) left and or right turns the tension shaft (11) to “track” the belt. Re-lock the tracking knob (19) to lock in belt tracking. Close box guard (21) and reconnect power.
- Examine the abrasive belt carefully before use. Never use an abrasive belt with a nicked or cut edge, crease, or handling damage.
- If you are using a dust collector, bags should be emptied frequently during use to maintain efficiency and prevent buildup of combustible materials.

1SM - PARTS DIAGRAM



ITEM	PART NO.	DESCRIPTION	QTY
1	291-007	FRAME ASSEMBLY	1
2	486-021	1/3HP MOTOR	1
3	HHC5025012	1/4-20 X 3/4 HHCS GR5 Z	6
4	UFWZ025	1/4 USS F/W Z	11
5	SLWZ025	1/4 SPLIT L/W Z	4
6	FHN5025	1/4-20 FHN GR5 Z	4
7	HHC5025008	1/4-20 X 1/2 HHCS GR5 Z	1
8	BUCKTP2116	1/4-20 TAB SPOT WELD NUT DOUBLE ALLOY	1
9	829-013	WORK TABLE	1
10	697-020	TENSION SPRING	1
11	700-005	TENSION SHAFT	1
12	560-018P	IDLER PULLEY	1

13	HHC5037032	3/8-16 X 2 HHCS GR5 Z	1
14	UFWZ037	3/8 USS F/W Z	1
15	SLWZ037	3/8 SPLIT L/W Z	1
16	SSKA025006	1/4-20 X 3/8 SOC SET KNURL PT.	1
17	SSSA025024	1/4-20 X 1-1/2 SOC SET CUP PT.	1
18	123-015	TRACKING COLLAR	1
19	441-015	TRACKING KNOB	1
20	563-003	PLATEN WELDMENT	1
21	342-087	GUARD FOR IDLER PULLEY	1
22	560-017	DRIVE PULLEY	1
23	710-007	ON/OFF TOGGLE SWITCH	1
24	710-008	ON/OFF PLATE	1

WARRANTY: All products are guaranteed for a period of one year to the original purchaser, against defects in material workmanship under normal use. Exclusions may apply.

RETURN POLICY: Authorization must be obtained BEFORE returning merchandise. Contact our customer service department at 269-382-2050 for a return authorization number. Include with your return a copy of your invoice or packing slip. Materials must be sent back prepaid unless otherwise indicated. All returns will be subject to a 10% restocking charge. No returns will be accepted after one year of the invoice date.

BELT SANDER SAFETY:

- 1) Read the operating instructions before running machine.
- 2) Always wear safety glasses or a full-face shield for protection.
- 3) Keep hands clear of the sanding area.
- 4) Never wear gloves or loose-fitting clothing when operating this machine.
- 5) Always keep hair tied back or covered.
- 6) Let machine rotation come to a full stop before changing belt.
- 7) Keep Safety guards in place. Do not alter guards or machine in any way. Any alterations to guards or machine could cause serious injury.
- 8) All belt sanders should be operated in a well-ventilated area. The dust created when some materials are sanded can be harmful. Dust masks are recommended as practical means of minimizing dust inhalation. Fumes from other sources can also cause fires when in contact with sanding sparks.
- 9) Sparks created by sanding should be directed downward and away from the face and body. Do not grind near flammable material.
- 10) Electric sanding machines are not intended for use in or near water. This includes an operator standing on a wet floor or working around containers of water or other conductive liquids.